

WILF HILLIS SAYS:

We have never heard of an old man or a widow who objects to life insurance. Life insurance is like a parachute: You don't take it until you need it — and don't have it.

LET'S TALK THIS OVER!

Wilf Hillis

Telephone 694W — Main St.

THE PRUDENTIAL
INSURANCE COMPANY OF AMERICA



The Old English Herb. Co.

Murdock St. Georgetown

**HERBS IN STOCK
ROOTS and POWDERS**

Our lines are mailed throughout Canada and U.S.A.

Cough Balsam, Bladder Balsam, Stomach Tonic and Laxative, Garlic and Alfalfa capsules, Veggie capsules, Digestive Tablets, Herbal powders, for constipation, also tablets, Neakleni herbal for constipation, Digestive food, Gas and antispasmodic tablets, Nose and throat tabs.

Your enquiry welcome
ADVICE FREE

Eyes Examined

**GLASSES FITTED
REPAIRS**

**SIMMONS
JEWELLERS**

MAIN ST. — GEORGETOWN
TELEPHONE 5302

Every Wednesday — 10.30 a.m. to 6 p.m.

Reg. Optometrist
S. M. FAIRBIE, B.O.
1061 Eglinton W. Toronto

Flowers

**FOR EVERY
OCCASION**

Design Work a
Specialty

Bonded Member T.D.S.
(Telegraph Delivery Service)

Flowers by wire anywhere in the world.

Norton Floral

Phone 315W — Georgetown

**Announcing
NEW LOW**

**Trans-Atlantic
Rates**

From Canadian to British
Ports

**TOURIST CLASS
\$147.00 and up**

**FIRST CLASS
\$210.00 and up**

For full details as to ship
contact

Walter T. Evans & Co.

Phone 185W



Hello Homemakers! "Time" waits for no man. Before we get down to polishing and repairing the necessary equipment and furnishings, Christmas will be here. Everything likes a spic and span house for the festive season and there are instances when a good patch job can be done successfully. For example, the floor which requires polishing may be waxed only in the traffic area if you remove the old wax from the tracked part of the floor first with a floor cleaner. Then two thin coats of fresh wax is better than a heavy coat. Polish well 30 minutes after each application. Curtains may have already been laundered or dry cleaned—if not, the cleaning plants will not have the same rush now as later. Perhaps the curtains, rugs, and blankets can be cleaned within a limited time.

The lampshades of stitched silk material can be successfully washed in warm suds, rinsed and hung to dry. The glued silk shades may be sponged with a dry-cleaning. For genuine parchment shades some believe that only neat's foot oil or a blend of ten parts mineral oil and one part turpentine can be used safely. Others claim that liquid wax or turpentine should be used to clean vellum or imitation parchment. It is also safe to brush thermoplastic shades in cold water with pure soapflakes... then rinse each small portion and dry before proceeding to the next.

Pictures and mirrors must be dusted frequently. The work can be done more easily if you take a moment to lift them down. Don't let the picture frames or the back of the mirrors get wet; use a slightly damp cloth.

Isolated stains which may appear on painted walls or woodwork, in rooms can be removed with a light application of commercial paint cleaner. Smudges will often disappear if they are rubbed gently with artgum eraser.

For the benefit of those who want Santa Claus to bring them a new electric polisher or vacuum cleaner, remember you can rent one to do the job in quick order.

TAKE A TIP

1. Attach rubber washers to the bottom of the dishpan to avoid leaving black marks on the sink and drainboard. A waterproof glue, such as aeroplane cement, will hold the washers.

2. A child's plastic bank is a handy container for discarded razor blades.

3. Ordinary plaster will not hold the screw hooks that are used in hanging pictures, but if a hole has been drilled in the wall, fill with plastic wood which has hardened for an hour, then the wood will hold the hooks firmly without any

cracks or chips in the plaster.

4. Spread a thin coat of colorless nail polish over a band-aid on a cut finger. You can then wash the dishes without it coming off.

5. When the motor pulley on a sewing machine has become worn and glazed, it can be repaired by slipping on a new rubber sleeve.

6. Bibb washers can replace worn rubber feet on electric toasters using a hollow rivet which can be punched through the corners.

THE QUESTION BOX

Mrs. B. K. asks for fruit flavor-Chess Cake.

- Answer: Fruit Chess Cake
- 2 tablespoons gelatin
 - 1 cup cold water
 - 1 cup finely rolled graham crackers
 - 1 teaspoon cinnamon
 - 1/2 teaspoon allspice
 - 1/2 teaspoon nutmeg
 - 1/2 cup fine white sugar
 - 1/2 cup softened butter
 - 2 eggs, separated
 - 1 teaspoon salt
 - 1/2 cup milk
 - 2 cups cottage cheese
 - 1 teaspoon grated orange rind
 - 2 tablespoons lemon juice
 - 1 can drained crushed pineapple
 - 1 cup whipping cream (35 per cent)

Soak gelatin in cold water for 5 minutes. Combine crumbs, spices, 1/2 cup sugar and softened butter; blend well; save out 1/2 cup for topping. Press remainder on buttered sides and bottom of loaf pan 9" x 5" x 3". Beat egg yolks slightly; add remaining half cup sugar, salt and milk. Cook in top of double boiler, over boiling water, until thickened (about 5 minutes); add softened gelatin, stir until dissolved. Cool slightly; add beaten cheese, grated orange rind, lemon juice and pineapple. Chill until the mixture begins to set. Fold in stiffly beaten egg whites and whipped cream. Pour into crumb-lined loaf pan; top with reserved 1/2 cup crumbs. Chill until ready to serve (at least three hours). Unmould; cut in slices. Serves 12.

Mrs. J. L. asks: How can you make broiled Cheese Squares without broiling element?

Answer: Baked Cheese Appetizers. Remove crust from 6 slices day-old bread; spread with chili sauce. Dice bacon; sprinkle on slices, then top with grated cheese. Place on oiled cookie sheet. Bake in pre-heated oven of 450 degrees until cheese is melted, about 10 minutes. Cut in squares and serve hot.

Mrs. L. N. asks: Which kind of cheese is the best buy for cooking?

Answer: If a pound of Canadian Cheese costs 47 cents, the loaf cheese is usually about 54 cents. Grated, the old cheese gives you about four cups, the loaf cheese dieed gives you about three cups.

Broil Meat to Add Flavour— Says Nutrition Specialist

You know there's something special about a broiled steak, and there are other meats that seem extra good when broiled.

Frances Cook, foods and nutrition specialist, University of Illinois college of agriculture, lists these meats as excellent for broiling: Steak or ground meat one inch thick, lamb chops one inch thick, liver one-half inch thick, ham one-half inch thick, and fish steaks. These take about 15 minutes to broil.

Remember a few simple rules for perfection when you broil meat, Miss Cook says. Let the meat stand at room temperature about 30 minutes before broiling so it won't be thoroughly chilled. Brush any meat except pork with melted fat. It's best to preheat the broiling unit five to 10 minutes, but do not preheat the pan. Set the temperature control at the position for broiling. And place the rack where meat will broil best—usually where meat will be three inches from the source of heat. The meat should be turned once, Miss Cook points out. Broil it half the required time on one side, half on the other.

Experts Suggest Safe Way To Start Wood, Coal Fire

In starting fires in the most common types of stoves and heaters the National Board of Underwriters suggests that these steps be followed:

1. Remove all ashes and partly burned fuel from the grate and ash-pit. Clean the stove thoroughly.
2. Open the damper.
3. Using a metal container, bring in the coal and wood. Place it on the metal pad beneath the stove. That metal pad is important—if you don't have one, now is a good time to get one.
4. Twist several sheets of newspaper together and bend them in the shape of a horseshoe. Place them in the combustion chamber and put dry kindling on top of the paper.
5. Light the fire from underneath.
6. Shut the ash-pit door and partially close the side openings. Open the draft in the ash-pit door.
7. After the fire has started, place several large pieces of wood in the stove and cover them with several shovelfuls of coal.
8. Remove all unused fuel away from the stove. And remember, no kerosene or gasoline!

Introduction of Canning

When France, under Napoleon, was fighting the other nations of Europe, food for the French armies was one of the greatest problems. The French government, as a military measure, offered a prize of 12,000 francs to anyone who could find a satisfactory method of preserving food. A man by the name of Nicholas Appert was among those who set out to win the prize. After 15 years, in 1810, he announced that he could preserve food by first heating it and then sealing it in air-tight containers. This was the beginning of the art of canning. Appert was given the prize and is called the "father of the canning industry."

Rembrandt, Biblical Student

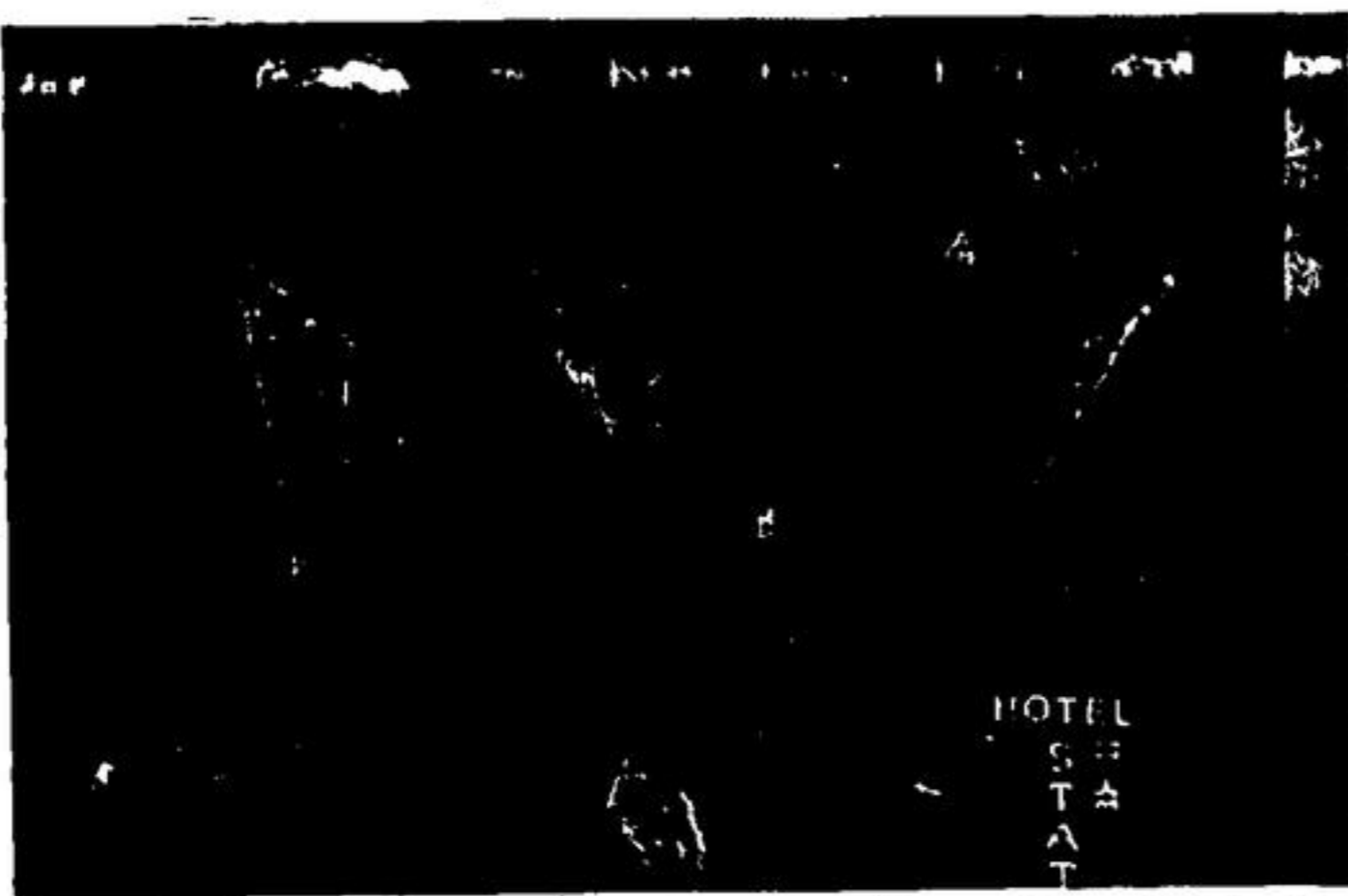
An "inner urge" drove Rembrandt, the great Dutch painter of the 17th century, to produce hundreds of Biblical pictures—despite the fact that there was little demand for religious art in Calvinist Holland. This is the conclusion of Professor Jacob Rosenberg, curator of prints at the Fogg art museum of Harvard university, after a long study of Rembrandt's life and work. In a two-volume study of "Rembrandt," Professor Rosenberg reports that the great Dutch artist gave the world 850 representations of Biblical scenes during the course of his lifetime. These included paintings, drawings and etchings.

Most 'Shot At' Island

Kahoolawe is an island in the Hawaiian chain that holds the distinction of being the most "shot at" spot on the face of the globe. The 15-square-mile patch of lava rock and sand west of Maui island is a target area for the U. S. navy, marine corps and air force. So many unexploded shells and bombs infest the little spot that even military men hesitate to land. Inspections when necessary are made from the air. The navy warried up its guns on Kahoolawe before nearly every major Pacific battle. Military experts say they expect to use Kahoolawe for a target range indefinitely.

Covered Bridges Not Obsolete

Covered bridges, familiar landmarks of serene country roads, are still an important factor in our country's transportation system. A recent study reveals that these favorite spooning sites for grandpa and grandpa have more than proved their worth, both economically and through records of service. The first covered bridge in this country was built in Pennsylvania about 1771. Although many of these highway veterans were not built according to modern engineering plans, they remain as testimony to the integrity and ingenuity of our country's first bridge builders.



WIN COVETED "OSCAR" AWARDS—Maynard A. Metcalf, left, vice-president and executive assistant, Canadian National Railways, Montreal, accepted the "Oscar" award won by the C.N.R. for the best annual report in the railroad classification of the Financial World's annual report survey. Edwin J. Meja, centre, vice-president of Aluminium Limited, Montreal, received an "Oscar" for that company's report which was judged the best of the aluminum products industries. The presentations were made at New York by Weston Smith, right, vice-president of the Financial World and originator of the annual contest.

MAJOR BOWLERS

Anderson Increases Lead In Major Bowling League

by Ace Bailey

Whitewashing Duke Wilson's team 7-0, Bill Anderson's team consolidated their hold on first place in the Major Bowling league last week. The team has 42 points and a record of 15 wins, 9 losses with total pinfall of 27,650. Wilson's team, who hold the cellar spot, put up a gallant fight to no avail. They only rolled 2871 to Anderson's 3316.

Alf Kirby's team broke a second place tie with Ace Bailey, claiming five points by rolling 3219 to 3168. They have 32 points and a 27,518 pinfall. Bailey has 29 and pinfall of 28,672. Wilson has 23 points and pinfall of 18,787, and their chances of getting to first place are getting slimmer.

Jim Brandford and Bill Anderson tied for the weeks' high triple, 748. Ace Bailey had 740, Joe Hall 697.

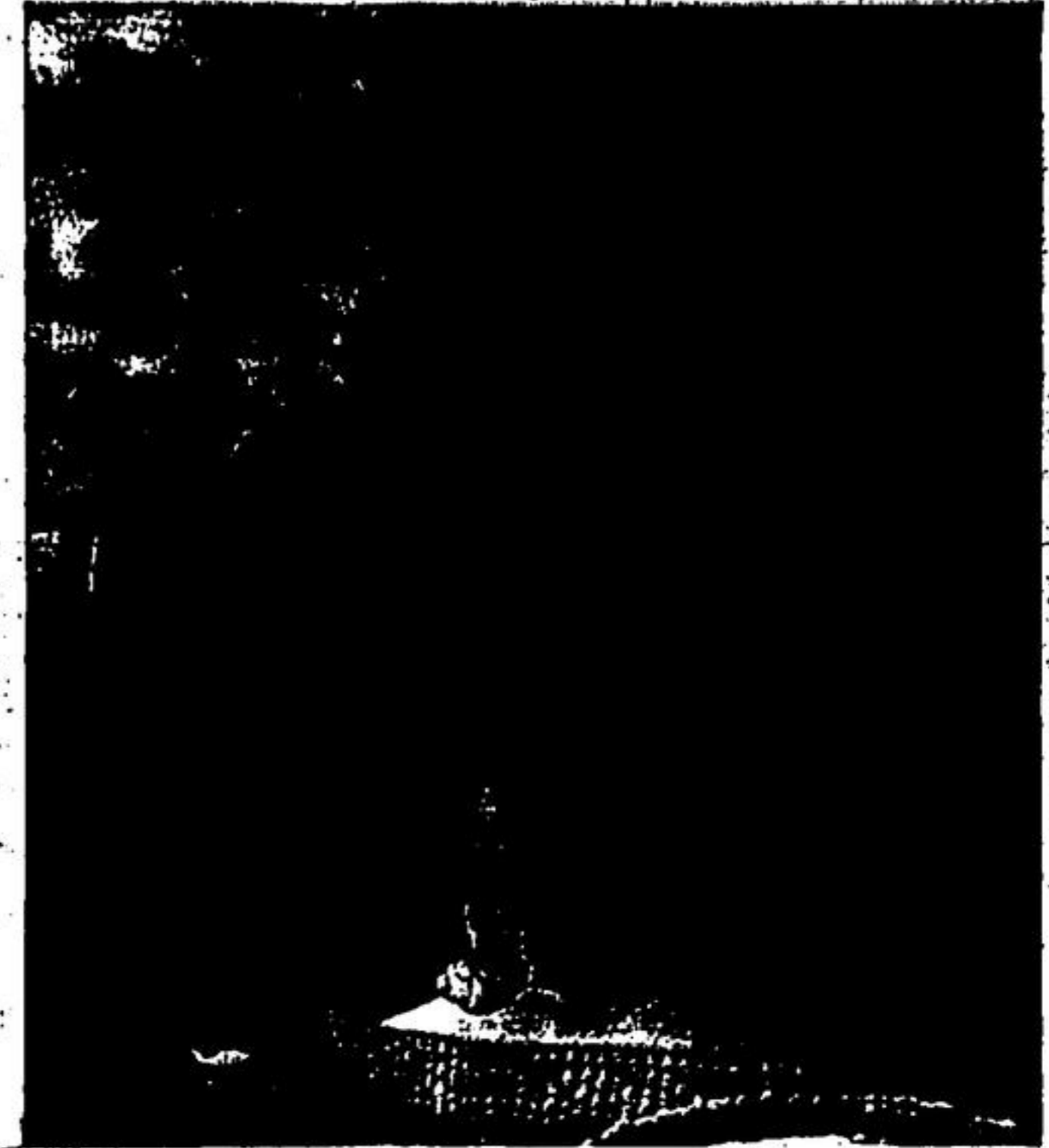
High single was 306 rolled by Anderson. Joe Hall was second with 291 and Tom Wylie rolled 276 for third place.

Anderson's team rolled high team single of 1148 and triple of 3316. Anderson 210; Hugh Dickie 252; Tom Wylie 278; Dave Stamp 179; and Nip Shipway 231. Triple scores — Dickie 662; Anderson 748; Wylie 642; Stamp 613 and Shipway 651.

Kirby's team had 1130 for second place honours in the singles. Jim Brandford 243; Ev Wilson 225; Bob Hall 226; Fred Spies 223; Kirby 213. They also took second place in triple with 3219. This is a good spot to mention Walt Brandford's 113.

It was a boisterous night at the Lucky Strike and every bowler there was putting everything he had into the bowling — yells, shouts, and all.

U.N. Relief in Korea



Moving swiftly to alleviate the suffering of the civilian population of Korea, the United Nations is undertaking a vast program of relief and rehabilitation. Here, inhabitants of Seoul are seen receiving the daily ration of rice distributed by the United Command with the help of local organizations to the city's seven districts. The rice was largely contributed by Thailand and the Philippine Islands.

FAIRBANKS-MORSE
Automatic OIL BURNER

MADE IN CANADA

Quieter, more efficient, years of extra life — Fairbanks-Morse Oil Burners offer all these features and more, because they're built by a company with the "know how" that comes only with years of experience. Come in and we'll prove it to you.

Frank Carney
Electrical and Refrigeration Sales and Service
PHONE 379J GEORGETOWN

Don't be a zero hero!

Time now for winter change-over with guaranteed SHELL-ZONE or EVEREADY PRESTONE ANTI-FREEZE

SHELL X100 MOTOR OILS — SHELL WINTER GREASE
Motor tune-up with genuine parts

FIRESTONE STUDDIED TIRES — WILLARD BATTERIES

Harley Motors
John Street Phone 539

**FARMERS
ATTENTION!**

Wanted... a number of progressive farmers in western districts who would like to set out a commercial block of red raspberries either for your local trade or for shipping to city dealers. Prices at 30-40 per quart would indicate good demand everywhere.

To encourage a limited planting of new high yielding patches, a nursery man of many years experience in commercial production will personally interview and educate interested farmers in raspberry culture. This should result in higher unit yield, longer patch life, less hard labor and when translated into dollars at normal prices a relatively high ratio of profit is assured.

If genuinely interested in berry growing as a sideline to farming write **BOX GM, GEORGETOWN HERALD.**

On or before Dec. 7th giving the location of your farm we will pick up your reply, call on you when in this locality and completely analyze this business soil requirements and preparations, up-to-date culture practice, home markets and surplus shipping, cost of planting, estimated yield and profits per acre. Later replies will not be covered, also will cover those interested in growing berries for themselves.