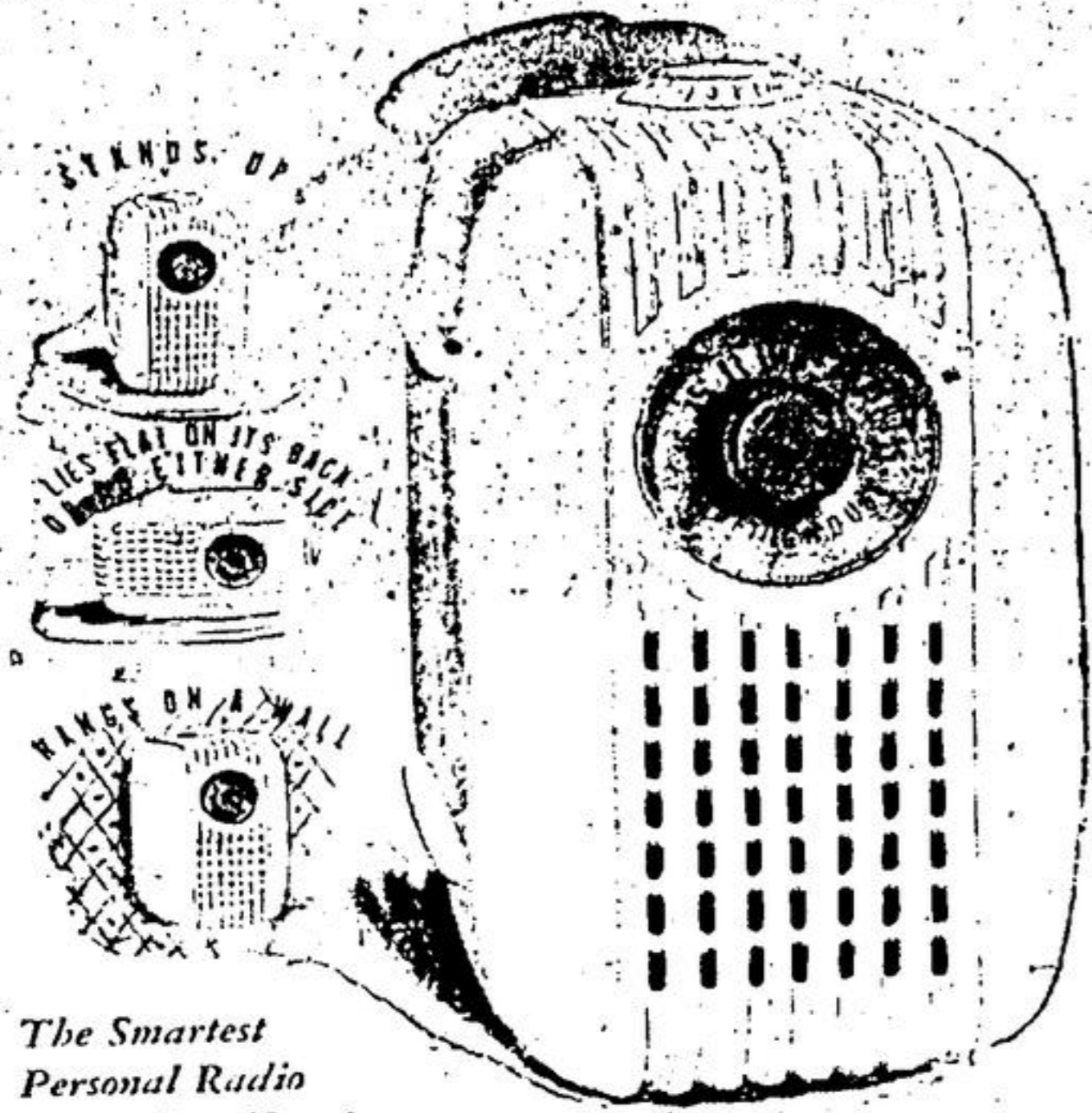


**COMES IN 6 COLORS  
PLAYS IN 5 POSITIONS**



The Smartest Personal Radio You've Ever Seen!

THE **Westinghouse "Personality"**

- IVORY
- BLACK
- BROWN
- BLUE
- MAROON
- GREEN

Wherever you want a radio... upstairs... downstairs... all around the house... here is the perfect choice for every room. You can hang it on the wall... place it on a narrow shelf... lay it on its back for chairside tuning... put it on either side by your bed! And you can choose from any of six natural color tones.

**\$29.95**

See "The Personality" NOW at

GOODLET'S ECONOMY HARDWARE

SEE OUR

**Complete Model Apartment  
FULLY FURNISHED**

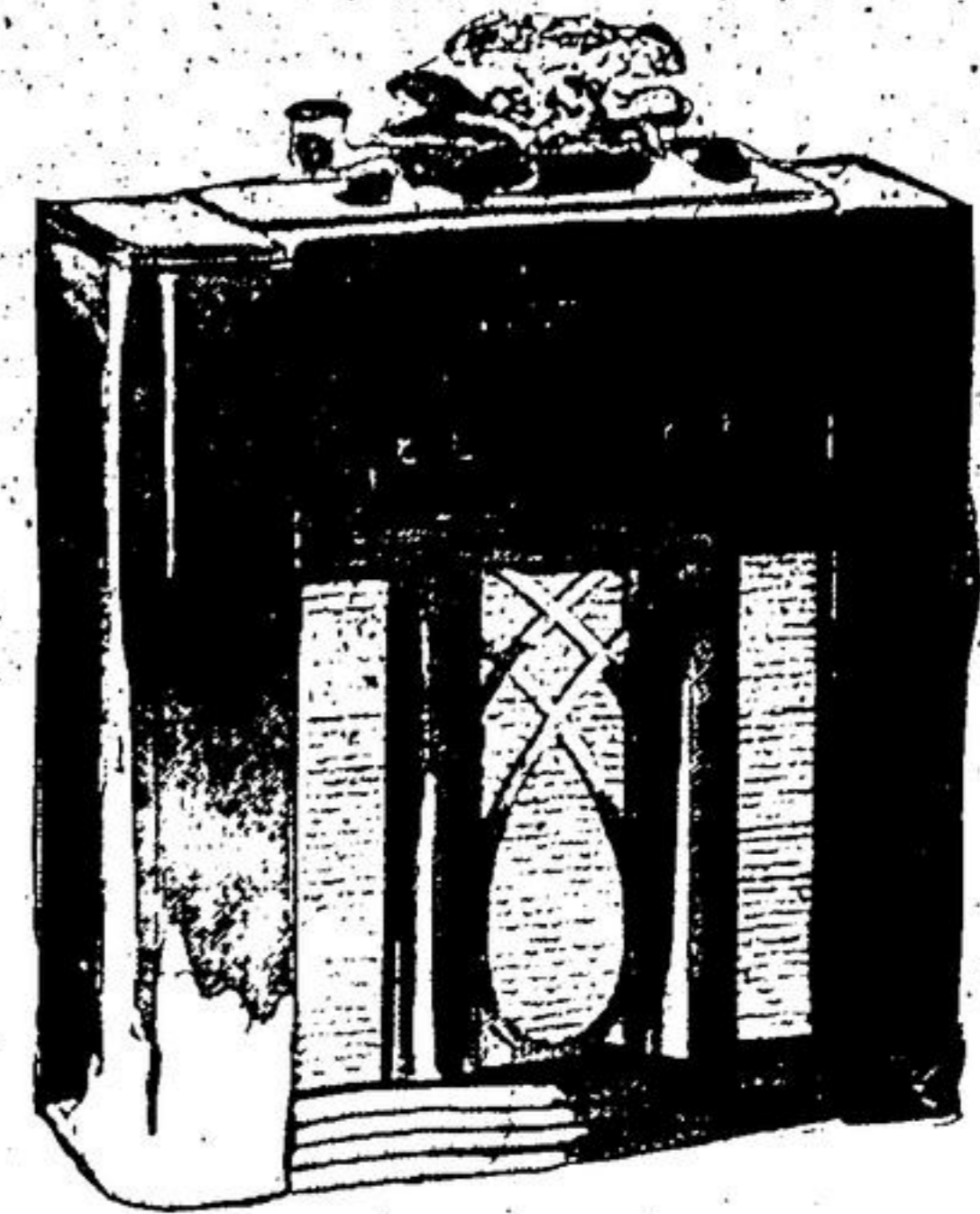
— and —  
FROM OUR FURNITURE STUDIO

**Values that Save You**

<p><b>CRIB MATTRESS</b> Size 18x36 <b>\$2.95</b> ea.</p> <p>ENGLISH Axminster Carpet 27" Wide <b>\$4.95</b> yd.</p> <p>BEAUTIFUL Matched Veneer Secretary <b>BOOKCASE \$69.95</b></p> <p>UNPAINTED CORNER <b>CHINA CUPBOARD \$13.95</b></p> <p>HOBBS <b>MIRRORS, POLISHED PLATE \$4.95</b> up</p> <p>LEATHERETTE and PLASTIC COVERED <b>HASSOCKS \$3.95</b> up</p> <p>EASY <b>VACUUM CLEANER \$69.95</b> Complete with attachments</p>	<p>LARGE SELECTION Linoleum and Congoleum <b>RUGS</b></p> <p>LARGE ASSORTMENT OF <b>END TABLES \$4.95</b> and up</p> <p>CHINTZ COVERED <b>BEDROOM CHAIRS \$9.95</b></p> <p>2-PIECE <b>Chesterfield Suite Slightly Soiled \$89.95</b></p> <p>All Hardwood Baby's <b>HIGH CHAIRS \$5.95</b></p> <p>PASTEL SHADES <b>BED LAMPS \$2.95</b></p> <p>SILEX 3-HEAT <b>HEATING PADS \$8.95</b></p>
--	---

**10¢ DOWN — LONG EASY PAYMENTS**

IF YOU LIKE A **BIG** RADIO



**CHOOSE THE "Carlton" by Westinghouse!**

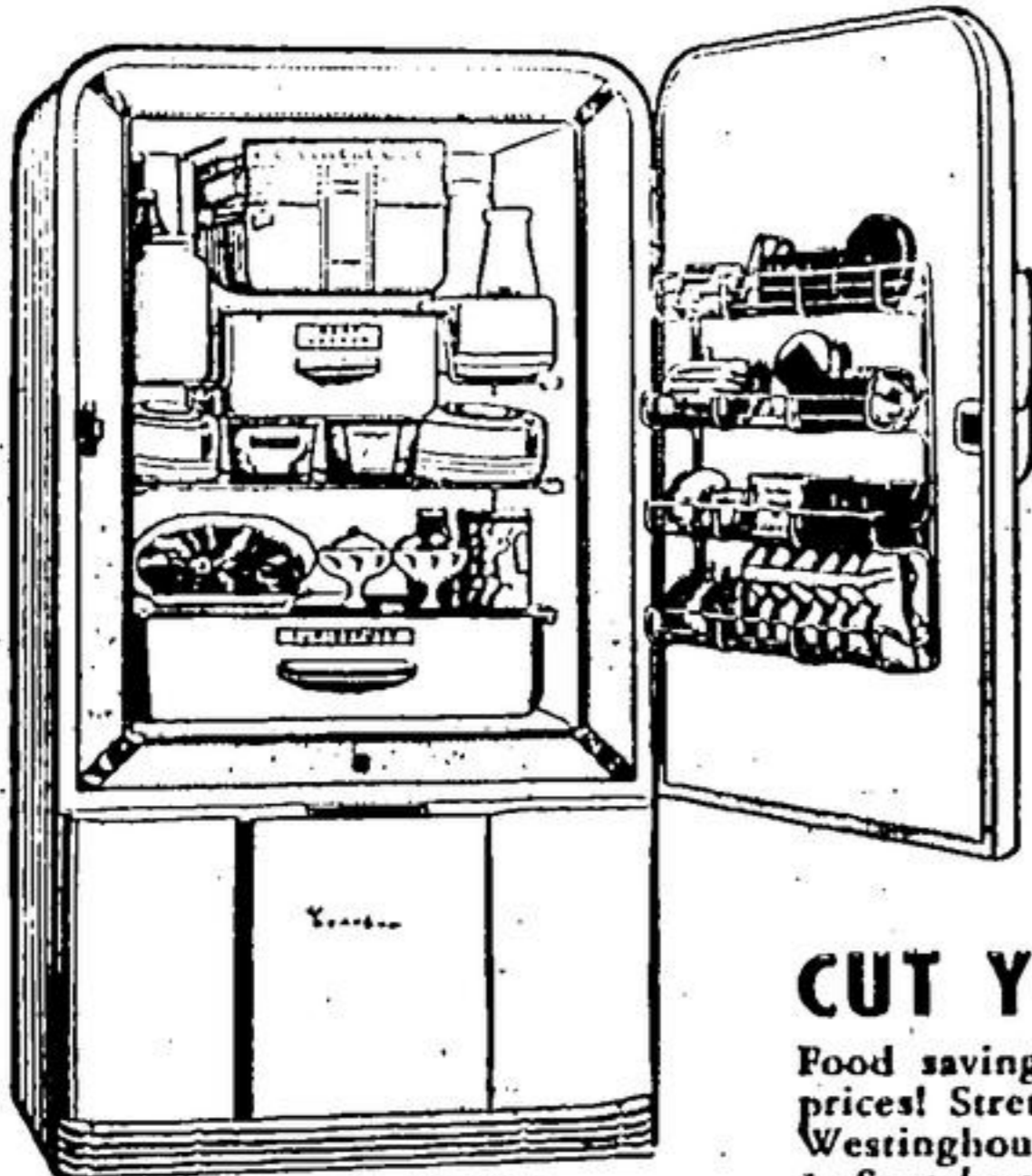
ALL THESE FEATURES:

- Pushbutton Tuning and Tuning Eye
- 13-Inch Concert Speaker
- Built-in Antenna - Phone Connection
- Westinghouse Polyphonic Reproduction
- Flood-lit, 4-Band Selector Dial

Here's a really BIG radio... big in appearance, in performance, and in value! The impressive cabinet with its massive lines and fine selected walnut finish encases a de luxe radio which gives you standard broadcast, and expanded 16-19, 25-31 and 41-49 metre bands... all brought thrillingly to life with the tonal magic of Westinghouse Polyphonic Reproduction! Compare it, feature by feature, with any other radio in its price range!

**EASY TERMS \$199.00**

There's no need to **Guess** at **FOOD TEMPERATURE!**



Westinghouse Model LD60 Designed for modern homes, includes Sanalloy super-freezer, hermetically-sealed economiser mechanism True Temp control and many other features.....

**\$298.00**

You can be **SURE** with Westinghouse **TRUE-TEMP "Constant Cold"**

Simply choose the degree of temperature to keep your food at its best, and that temperature will be maintained constantly... regardless of weather... by the exclusive Westinghouse "True-Temp"—the only cold control on the market marked in actual degrees! Just one of many modern advancements in the new Westinghouse refrigerators.

**CUT YOUR FOOD COSTS**

Food savings can be "big money" at present prices! Stretch your food dollars four ways with Westinghouse "True-Temp" food protection: 1. Save by ending food spoilage; 2. Save by using leftovers; 3. Save by making your own desserts; 4. Save by quantity buying.

Your Westinghouse Refrigerator will actually pay for itself!

Order your **NEW** Westinghouse **WASHER** NOW!



EXCLUSIVE **Cushioned Action**

**Washes Clothes Cleaner... Without Wear... Lasts Longer**

EVERYTHING you've always wanted in a washer is waiting for you in the new Westinghouse! Scientific water action washes clothes cleaner... exclusive "Cushioned Action" gyrator banishes clothes wear... Westinghouse precision engineering assures longer life... "Sentinel of Safety" affords you and your washer more protection. Beautiful white porcelain tub. All these and many additional modern advancements give you MORE in a Westinghouse washer... at a price you can afford to pay! **\$159.50**

*You get MORE in a Westinghouse*

**Shop at GOODLET'S For ECONOMY - PHONE 124**