

SOCIAL AND PERSONAL

Mr. and Mrs. Ted Ewing have moved to town from Glen Williams and are living on Murdock Street.

Billy Hardman celebrated his eleventh birthday on Monday when he entertained a number of his school chums at a sleigh ride after

four which ended with supper served at his home on Normandy Boulevard.

Mr. and Mrs. Andrew Frank and family of Nassagawya and Mr. and Mrs. William Anderson of Guelph were Sunday visitors at the home of Mr. and Mrs. James Evans.

Esqueuing's Reeve Is

1948 Halton Warden

George E. Cleave, well-known Georgetown district farmer who is serving his second year as reeve of Esqueuing is the new warden of Halton County for 1948. A veteran public servant, Mr. Cleave has twice been Esqueuing's reeve since first holding municipal office twenty-two years ago and has served on Esqueuing Council for some fifteen years.



George Cleave

Three council members were nominated for the office, Mr. Cleave getting a majority on the second vote over Reeve Mary Pettit of Nelson Township and Reeve Alex Maclaren of Georgetown.

Standing committees for 1948 are:

Finance—W. S. Hall, Alex MacLaren, H. S. Litchfield, J. W. Higgins, E. C. Foster.

Education—F. J. McCutcheon, J. T. Armstrong, George Currie, H. D. Allen, W. H. Biggar.

Printing—E. W. Smith, Wm. S. Coon, Mary Pettit, H. S. Litchfield, Wm. VanSickle.

County Buildings—P. W. Chambers, J. W. Higgins, H. D. Allen, George Currie, W. S. Hall.

Hospital Accounts—J. W. Higgins, P. W. Chambers, J. T. Armstrong, F. J. McCutcheon, Alex. Maclaren.

Agriculture and Reforestation—Alex. Maclaren, Wm. VanSickle, George Currie, H. D. Allen, E. C. Foster.

Special Communications—Wm. VanSickle, Wm. S. Coon, E. W. Smith, J. T. Armstrong, P. W. Chambers.

County Roads—W. H. Biggar, Mary Pettit, Wm. VanSickle, P. W. Chambers, Alex. Maclaren.

G. R. C. ELECT OFFICERS FOR 1948

E. V. MacCormack was elected for a third term as president of the Georgetown Recreational Council at the annual meeting held in the Old Town Hall on Wednesday, January 21st. Recreational Director Hal Newman read a report dealing with the program and achievements during 1947 with a resume of what may still be achieved if the Council has the whole-hearted co-operation of the community to back its efforts.

The nominating committee presented a slate of officers to which was added Cr. Ray Whitnee, Recreational and Industrial Chairman for the town council.

Officers for 1948 are:

President—E. V. MacCormack.

Vice-President—D. W. Barrager.

Secretary—Hal Newman.

Treasurer—H. Grose.

Executive—E. L. Arnold, H. Burrows, Walter Biehn, Jack Brill, Jack Cotton, Elmer Dron, Bruce MacKenzie, Walker Cleave, Harold McClure, Lorne Peters, C. E. Stacey, Walter Richardson, Sid Silver, Alf Sykes, Roy Ward, Howard Wrigglesworth, Dick Licata, J. L. Lambert, Leslie Clark, R. H. Ireland, and A. C. McBride.

FAST SERVICE ON

Watch & Jewellery Repairs

NOW THAT CHRISTMAS IS OVER, WE ARE ABLE TO GIVE YOU MUCH FASTER SERVICE. TRY US!

Simmons Jewellers

Next to the Golden Gate Cafe

HEAR Queen's Park Report No. 3

by **PREMIER GEORGE DREW** "EDUCATION FOR TO-MORROW"

Friday, Feb. 6th - 8. to 8.15 p.m. TORONTO - CFRB

Harley Motors

IS AT YOUR SERVICE FOR CAR REPAIRS.

BRAKE LINING A SPECIALTY

Shell Products — Class "A" Mechanic

Gordon Harley, Prop.

PHONE 539

John St., near Arena

ROXY

GEORGETOWN

Last Times

"CYNTHIA"

FRIDAY - SATURDAY FEBRUARY 6 - 7 (CONTINUOUS SHOW 7:00 P.M.)

THE WONDER SHOW OF TODAY ... About The First Wonder-Star Of The Screen!

PERILS OF PAULINE

The heart-throbbing story of the most glamorous... most daring... woman of the screen... whose thrill-swept life was a world-famed thrill!

BETTY HUTTON **JOHN LUND**

with **BILLY DE WOLFE**, **William Demarest**, **Constance Collier**, **Frank Faylen**

Mon. Tues. Feb. 9-10 Wed. Thur. Feb. 11-12



SISTER KENNY

with **DEAN JAGGER**, **MERIVALE BOND**, **Charles DINGLE**



LOVE WAS THE BAIT FOR HIS MURDER PLAN!

INGRID BERGMAN **ROBERT MONTGOMERY**

with **GEORGE SANDERS**, **LUCILE WATSON**, **OSCAR HOMOLKA**

INTERMEDIATE 'A' & 'B' OHA HOCKEY STANDING

Team	W	T	L	Pts.
GEORGETOWN	9	0	0	18
Milton	6	1	3	13
Acton	5	1	3	11
Weston	5	1	3	11
Fergus	3	1	4	7
Oakville Legion	2	0	6	4
Orangeville	2	0	8	4
Oakville Army	1	0	6	2

JUNIOR 'C' OHA HOCKEY STANDING

Team	W	T	L	Pts.
Oakville	5	1	0	11
Weston	4	1	1	9
Brampton	1	0	4	2
Georgetown	0	0	5	0

A Firm of Investment Dealers Requires a Local Representative:

The person chosen from this district should be first and foremost a man of integrity with some experience in investment matters and have the ability to judge comparative values in securities.

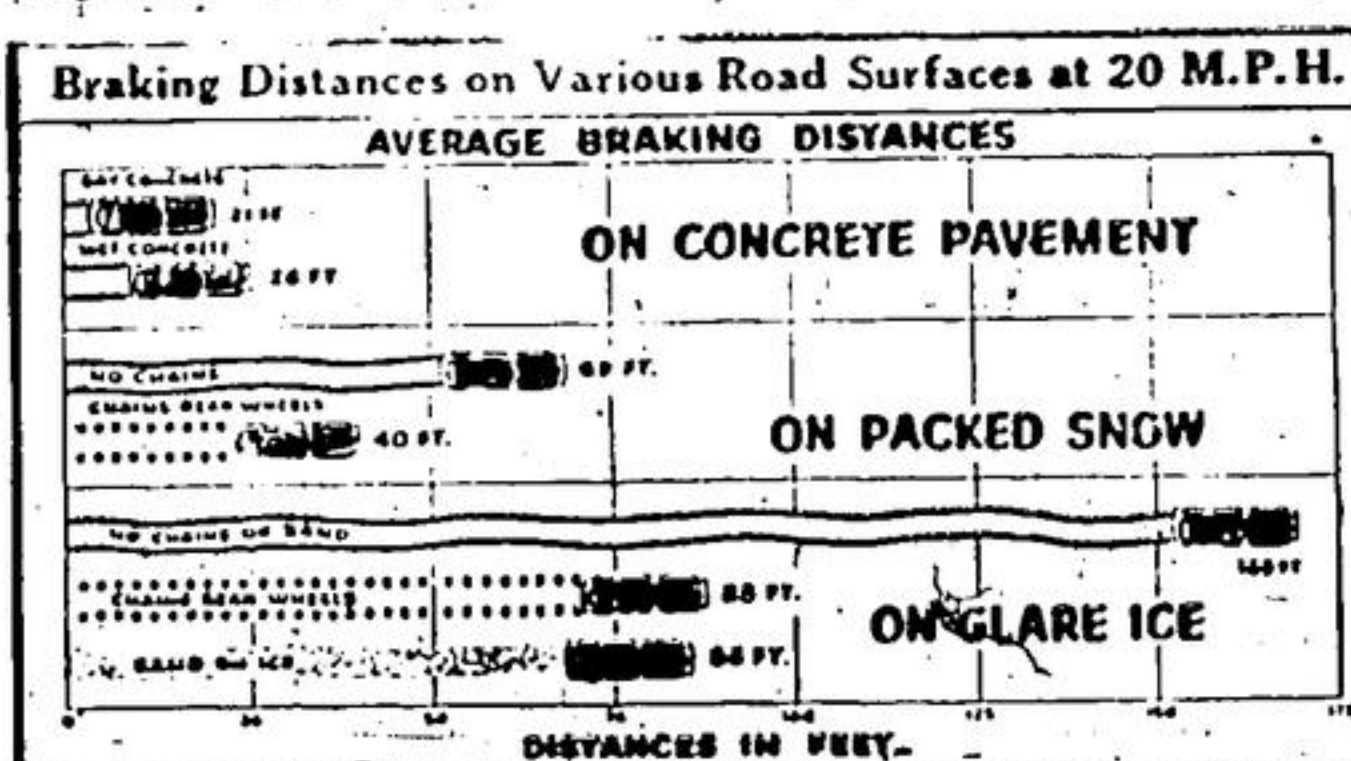
This is an opportunity to maintain an active and remunerative interest in the financial affairs of this country—now facing the greatest growth in its history. It should appeal to a retired or semi-retired business or professional man wishing to preserve his own initiative in the matter of demands on his time and energy. He would have the support and personal counsel of a district representative, well-trained in analysis of investments. His accounts of sufficient importance to merit such attention, would have benefit of Investment Management Service, if so desired. Full statistical services are maintained.

The advertiser, a firm established more than 25 years, is a conservative and progressive underwriter and distributor of Government—Municipal bonds and Corporation bonds and equities—a member of the Investment Dealers Association of Canada and the Investment Bankers Association of America. All the advantages of membership on The Toronto Stock Exchange and the Montreal Stock Exchange are available through an affiliate organization.

Replics which should be reasonably informative will be treated confidentially.

Box No. 40, The Herald Georgetown, Ontario

Use Second Gear For Safe Driving On Snow Or Ice



Driving Test Expert Gives Advice About Skids

Take it easy. Keep your car under control at all times. Don't apply your brakes suddenly and that great bugbear of winter driving, the unpredictable skid, can be avoided. This is the advice of experts to Ontario motorists during the temperamental days of January.

January is a month of moods, they warn. Sudden thaws are followed by quick freezes. Skies rain and snow alternately. The wise driver is prepared for these changes and the hazards they present.

Of the 1,453 accidents that occurred in January of last year, 1,003 or approximately 75 per cent took place on snowy or icy roads, according to a summary of accident statistics compiled by the Motor Vehicles Branch of the Department of Highways. Thirteen of the accidents were fatal, 351 resulted in injury, and damage to property happened in 720 cases. Accident records show that people do make some allowances for road and weather conditions, "often not enough."

Skids Can Be Avoided

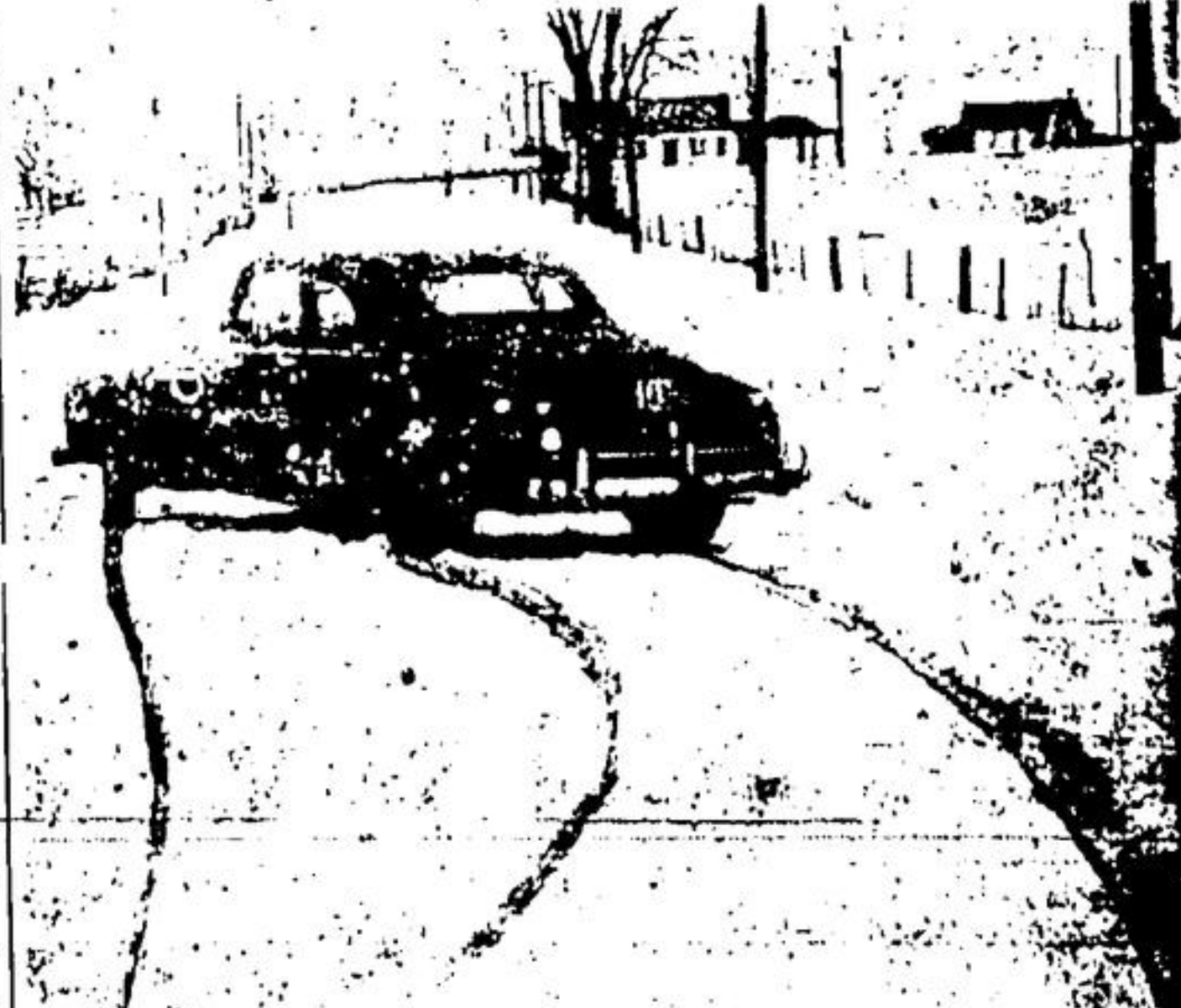
"Get into the habit of using second gear whenever you have to slow down," says a senior examiner of the Department of Highways, a man who has given thousands of driving tests to applicants for driving licenses.

Pointing out that every year a new army of drivers have to learn how to drive on snow and ice, he offers this advice to novices.

"Keep your foot away from the clutch pedal until the combination of gearing down and 'pumping' the brake pedal has brought the car almost to a standstill.

"If the car starts to skid ahead when the brakes are applied, the driver must release the brakes at once. As soon as the wheels start turning again he may brake gently. Repeating this process of alternate braking and releasing (commonly known as 'pumping the brakes') will generally bring the car to a safe stop. If a car skids sideways while you are driving, you should turn into the skid—that is turn your front wheels in the direction in which the rear end is skidding.

When approaching a curve almost any driver has enough sense to slow down. It is even usual to bend centrifugal force by 'gunning' the car again as you come out of the curve itself. But motorists should be hesitant in doing this on snowy or icy curves, the expert says. Generally speaking, on ice or snow



When skidding, turn front wheels into direction of skid to counteract it. This car's rear wheels were skidding to the right. Its driver turned the front wheels to the right also, and came out of the skid.

drivers should not accelerate on curves, unless the car begins to slip sideways then some gentle acceleration may help."

Watch Street-Car Tracks

In cities with street-car tracks, snow and ice build up on both sides of the tracks. There is great danger of getting one or both wheels of a car caught in the ruts that form there. By throwing the car out of control this causes a great many accidents.

"When you have to cross or straddle the tracks, your front wheels should be turned at a sharp angle," says the Department of Highways expert. "If you do get caught in a skid along car-tracks, you can come out of it safely if you turn sharply in the direction the car is skidding—the same procedure as with any other skid sideways."

Have your brakes equalized—that means having them fixed so that they will have the same pull. Then when the brakes are applied the car may skid forward but will stay in a straight line. If the left brake grips harder than the right the car will pivot toward the left into the path of oncoming traffic. A forward skid is not so dangerous as a sideways skid. In a sideways skid the car may in some cases turn completely around or it may make an about face and be headed in the opposite direction to that in which it had been travelling.

Roads covered with snow and ice are always dangerous. One is just as likely to skid when starting a car as when stopping. New tires grip infinitely better than old ones. But even with new tires, chains should be used on ice or packed snow—they can reduce braking distance as much as 40 or 50 per cent.