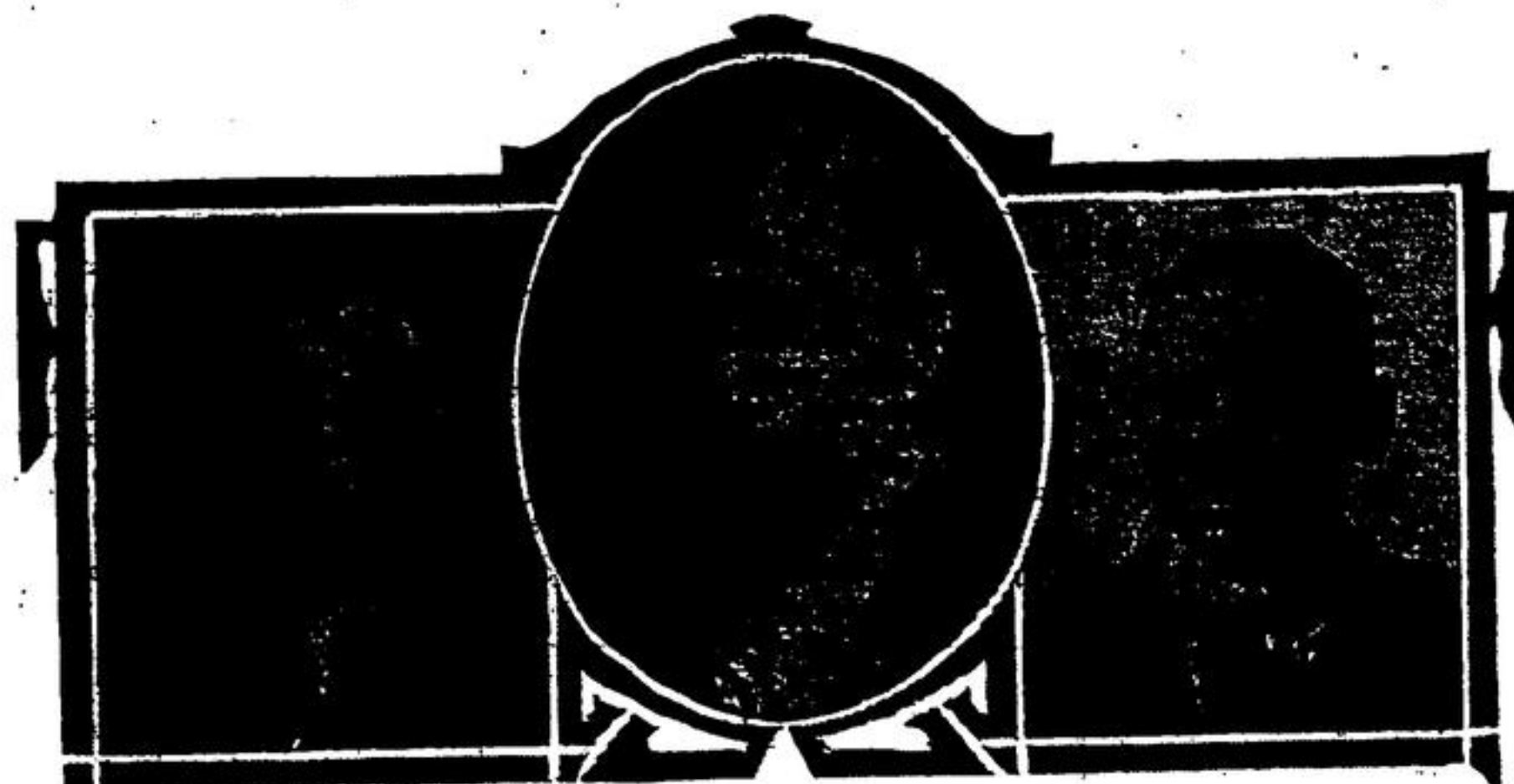


Newest Locomotive is Monster Indeed



The largest and most powerful locomotive of its kind in the world has just been completed in the Angus Shops of the Canadian Pacific Railway, Montreal, for service in the Rocky Mountains. The new "8000" locomotive represents a new era in the advancement of steam motive power of greater efficiency and higher sustained capacity. It is called a "multi-pressure" engine because it generates its steam in three separate pressures and at three different pressures and because of its radical departure in boiler design, its creating something of a furor in mechanical and railroad circles.

Plans and figures of the "8000" will give some indication of its magnitude, efficiency and strength. It is only a scant nine inches short of 100 feet in length. Weight of engine is 435,000 lbs. and of tender 300,000 lbs., making a total of 735,000 lbs. or 327 1/2 tons. It has five driving wheels on each side, each of which is 63 inches in diameter. Its tractive effort is 80,000 lbs., which means that on a level track it will haul a freight train, over a mile in length, made up of one hundred and fifty 40-ton cars and representing a total weight of 6,000 tons. Its tender has a capacity of 12,000 gallons of water and 4,350 gallons of fuel oil enabling it to make long hauls without replenishing. There are 18,035 feet or slightly over three and a half miles of seamless steel tubes used in the construction of the boiler units alone. An outstanding feature of the "8000" is the firebox unit which is a closed circuit in which 300 gallons of distilled water are continually circulating without loss by evaporation. Distilled water is used because it prevents accumulation of sludge and scale so common in water tube boilers. The closed circuit or firebox unit extends into the high-pressure boiler drums in the form of 16 coils, called heat transfer coils. There are three locomotives of this type in Europe and they show excellent savings in fuel ranging from 25 to 35 per cent, as compared with the conventional type of locomotive. But the great asset of the "8000" is that it will be used in the Rocky Mountain territory of the company. H. B. Bowen, (Inset) Chief of Motive Power and Rolling Stock, Canadian Pacific Railway, working in co-operation with the American Locomotive Company and the Superheater Company of New York, designed the "8000" after he had made a special trip to Europe in 1929 to study locomotive type and development. The construction of this monster locomotive was handled under direct supervision of J. Burns, Works Manager, Angus Shops, and Mr. T. Donald, of Mr. Bowen's staff. Layout shows full length view of the "8000"; front-end view; and, inset, Mr. Bowen, designer of the locomotive.



J. P. REGAN J. H. BIGGAR E. H. MUNRO

The Canadian Westinghouse Company is to-day announcing to the trade new merchandising, sales and advertising plans, which bring a solution to the problems confronting the dealers interested in the sale and distribution of radio and every kind of electrical product. To direct the new and enlarged activities of the new type music and electrical dealer, the Canadian Westinghouse Company has secured and announced the appointment of the following—Mr. J. H. Biggar, Manager Merchandising Department, Mr. J. P. Regan in charge of Sales

Promotion for Eastern Canada, and Mr. E. H. Munro in charge of Sales Promotion for Western Canada.

These well known gentlemen for many years past have been connected with one of the largest and most successful radio and musical instrument manufacturers in Canada and are particularly qualified to direct the new Westinghouse plan of developing the business of the radio and musical dealer from a seasonal one to a business which can be carried on successfully twelve months in the year.

Never again say - -

Is that all you paid for this . . . ?
Where did you ever find these . . . ?
Why, it costs me nearly twice that much!
Do tell me where you got them for that!
How do you ever manage so well on so little?
But, aren't they awfully expensive?
I wish I could do it.

Read the advertisements. Know what you want before you go to buy. Get the most for your money by knowing what manufacturers and merchants are offering.

Advertisements will keep you abreast of the times. They will enable you to spend the family income wisely. They will help you to live better at less cost.

Then—when remarks similar to those above are made to you, pass on this good advice, for all who want the best at the least cost - READ ADVERTISEMENTS.

Here and There

Admiral Earl Jellicoe, head of the battle of Jutland, will open the Toronto Exhibition next August. He will be a passenger on the "Duchess of York."

More newspaper paper is made in Canada than in any other country. In 1930 Canada manufactured 2,564,000 tons or 95 per cent of the world production of newspaper paper.

Thirty-eight lakes in the district of The Pas are being commercially fished today as against 18 two years ago. The catch was 2,175,000 pounds of fish in 1930 as compared with 1,400,000 lbs. in 1928.

Sixteen countries have so far accepted the invitation of the Canadian Government to send official representatives to the World's Grain Exhibition and Conference to be held at Regina, July 25 to August 6, 1931.

Points on the ranches in Prince Edward Island are getting Vitamin D in their diet through the medium of fish. Twice a week sun-dried salmon is fed to the animals on the ranches. The animals are thriving on this new diet.

Benji, Yoho and Kootenay national parks in the Rockies are available to motorists by a developed loop route at the cost of a \$2 licence fee. This opens up 400 miles of fine travelling and sight-seeing territory with a total park area of 8,579 square miles.

A Calgary man has won the cheque for \$500 offered for the best slogan in the contest for the management of the World's Grain Exhibition and Conference to be held at Regina, July 25 to August 6, 1931. The slogan was: "Show what you grow and share what you know."

The English Association Football team, representing many of the best players in the British Empire, which will tour Canada, playing games in the major cities of the Dominion, will leave for Montreal on board the Duchess of Atholl, May 23.

Radio continues to grow in popularity in Canada. It developed receiving sets at the end of last March totalled 514,701, an increase of 90,555 over the number registered of the previous year. Figures for the year to March 31, 1931 represent a set for every 19 of the population.

Included in the brilliant passenger list that will feature the maiden voyage of the Empress of Britain, 42,500-ton flagship of the Canadian Pacific Atlantic fleet, at the end of May, will be Lord Rothermere, great English publicist and owner of string of British newspapers, including the London Daily Mail.

Representative French railway experts touring this country and the United States recently made a thorough inspection of Canadian Pacific transportation facilities, steamships, hotels and terminals, gathering a considerable body of information with a view to renewal of material and equipment on the Chemin de Fer du Nord, in France.

Empire Day, held this year on a Monday, made a long week-end holiday. In every part of the Dominion, holiday-makers took advantage of the new low week-end fares, recently inaugurated by the Canadian Pacific Railway, charging fare and a quarter for return trips to any point in the country. This reduction is in force everywhere in Canada every week-end. (739)

Pictou lobster fishermen are trying a new venture in shipping lobster to Boston, Mass. Recently a carload valued at \$4,000 went through by express over Dominion Atlantic Railway lines to Yarmouth, being shipped thence to Boston.

Leaves of wild life will be glad to hear of the establishment of a second Bird Sanctuary in Canada, similar to that of Jack Miner, to be situated at Bird Haven Farm, by John W. Piggott, of Bridgetown, Nova Scotia. The sanctuary is located in the heart of the beautiful Annapolis Valley.

The first radio broadcast in history of musical entertainment from a steamship in motion, sent over a network of stations in the United States and Canada, was carried through successfully as the Empress of Britain was sailing up the St. Lawrence on her maiden voyage from Quebec June 1.

All records for the St. Lawrence route to Europe were shattered when the new Canadian Pacific liner Empress of Britain, 42,500-ton flagship of the company's Atlantic fleet, made the run from Quebec to Father Point in four days, nineteen hours on her maiden voyage, May 27-June 1.

"The train ride from Vancouver to Banff is the most wonderful I have ever taken," was the comment of the much-travelled and famous writer J. B. Priestley, of "Angel Pavement" and "The Good Companions" fame, interviewed recently at the Banff Springs Hotel. "These parts are too wonderful to describe," he said, and added he was coming again in September for the trail riding.

The Shield for efficiency among the four Canadian Pacific white Empresses of the Pacific, donated last year by Mr. W. Beatty, chairman and president of the company, was presented for the second time at Vancouver recently to Captain J. J. Hoadley and the ship's company of the Empress of Russia. During the presentation the gathering was entertained by the broadcast from the Empress of Britain, over 3,000 miles away, steaming down the St. Lawrence.

Definite promise of an international travelling Art School with headquarters to be established at Banff in 1932, or at one of the Bungalow Camps in the Rockies, has been given by Tom Hall, prominent London, England, artist who has been assured by a number of his conferees in England that they would join him in artistic exploitation of the scenic wealth of the Canadian Rockies.

Travelling by Canadian Pacific special train from Toronto to Victoria and return, over 100 members of the Canadian Manufacturers' Association held the annual general meeting early in June and took the opportunity to make a Trans-Canada tour, including Winnipeg, Regina and Saskatoon, where they conferred with local industrialists and were given a guide and provided with luncheon. The meeting coincided with the 60th anniversary of the entrance of British Columbia into Confederation. (744)

Here and There

More than half the fresh water of the globe is contained in inland waters of Canada and twenty at least varieties of food fish are obtained from them in abundance by commercial fishermen.

Final figures of gold production for 1930 may find Canada in second place instead of the United States—following South Africa, according to estimates of the Director of the United States Mint.

Travelling health clinics operated by the Alberta Government in that province to visit remote districts and provide free medical service went to 27 points last year including 304 school districts.

The habit of taking snuff is on the increase in Canada. In 1929 over 397,000 pounds were made, valued at \$1,200,317; an increase of over 12,000 pounds and more than \$530,000 in value as compared with 1919.

Fish as candles? Certainly, some of them, sometimes. One of the small oily fish taken in British Columbia waters, are also known as "Candlefish," because the Indians used to dry them and use them as candles.

Forty-one anglers who fished the 4 1/2 miles of open water reserved for regulated public fishing on the famous Bow River in New Brunswick during the 1930 season caught 213 salmon weighing 5,327 pounds.

The Earl and Countess of Strathmore, Canada's new Governor-General and wife, arrived at Halifax Saturday on board R.R. Duchess of Bedford and are scheduled to make a tour of the Dominion to Victoria and back, returning to England May 11.

A party of twelve headmaster and representing a number of Great Britain arrived at Halifax recently aboard Duchess of Bedford and are scheduled to make a tour of the Dominion to Victoria and back, returning to England May 11.

Canadian Pacific Railway hockey team added to the laurels gained by winning the Empire Hockey championship at Montreal, when they defeated the Winnipeg C.P.R. team and took the hockey championship of the railway.

Nova Scotia is to be represented by an industrial and tourist exhibit at the Bermuda Exhibition April 21-23 next. It is being arranged by the Nova Scotia Bureau of Information and the Department of Information of the Provincial Government.

The largest number of passengers ever to sail on a ship left New York to Bermuda left on the Duchess of York Good Friday, when 748 passengers were on board. This service was inaugurated this year and has been so successful that four extra sailings have been announced.

An art school on wheels through the most beautiful section of the West has been organized by a Montreal artist to travel by Canadian Pacific Railway from the city as far as Victoria during July. The school will make a specialty of Indian and cowboy art, and the glorious scenery of the Rockies as subjects for painting. (737)

Annual value of forest products in Canada is placed around \$1,600,000 by the Canadian Government Forestry Service, and over 200,000 persons are employed in this work.

Total value of crude bullion gold in Ontario for the first two months of 1931 is placed at \$6,517,354 as compared with \$5,334,356 for the same period of 1930, an increase of nearly 22 per cent. If this continues, all previous records of gold output are likely to be exceeded this year.

Position of president of the Boy Scouts Association of Canada has been offered and accepted by E. W. Beatty, chairman and president of the Canadian Pacific Railway, whose interest in boy scouts has long been recognized all over the Dominion.

John Mipard, section hand with the Canadian Pacific Railway for many years and pensioned at the age of 73, celebrated his 100th birthday April 1. He does not use glasses, eats well, sleeps well and enjoys life. He has no prescriptions for exceeding the century mark.

Sponsored by the Alberta Motorcyclists Association, the Western Canada Motorcyclists hill-climbing championships will be held at Banff in the Canadian Rockies on May 31 and will be followed the same day by the East annual regatta.

A shipment of 90,000 salmon eggs has recently been forwarded to the Dominion Fish Hatchery at Flat Lands, Restigouche County to receive treatment prior to being deposited in the Nipisiguit River as restocking New Brunswick fishing waters.

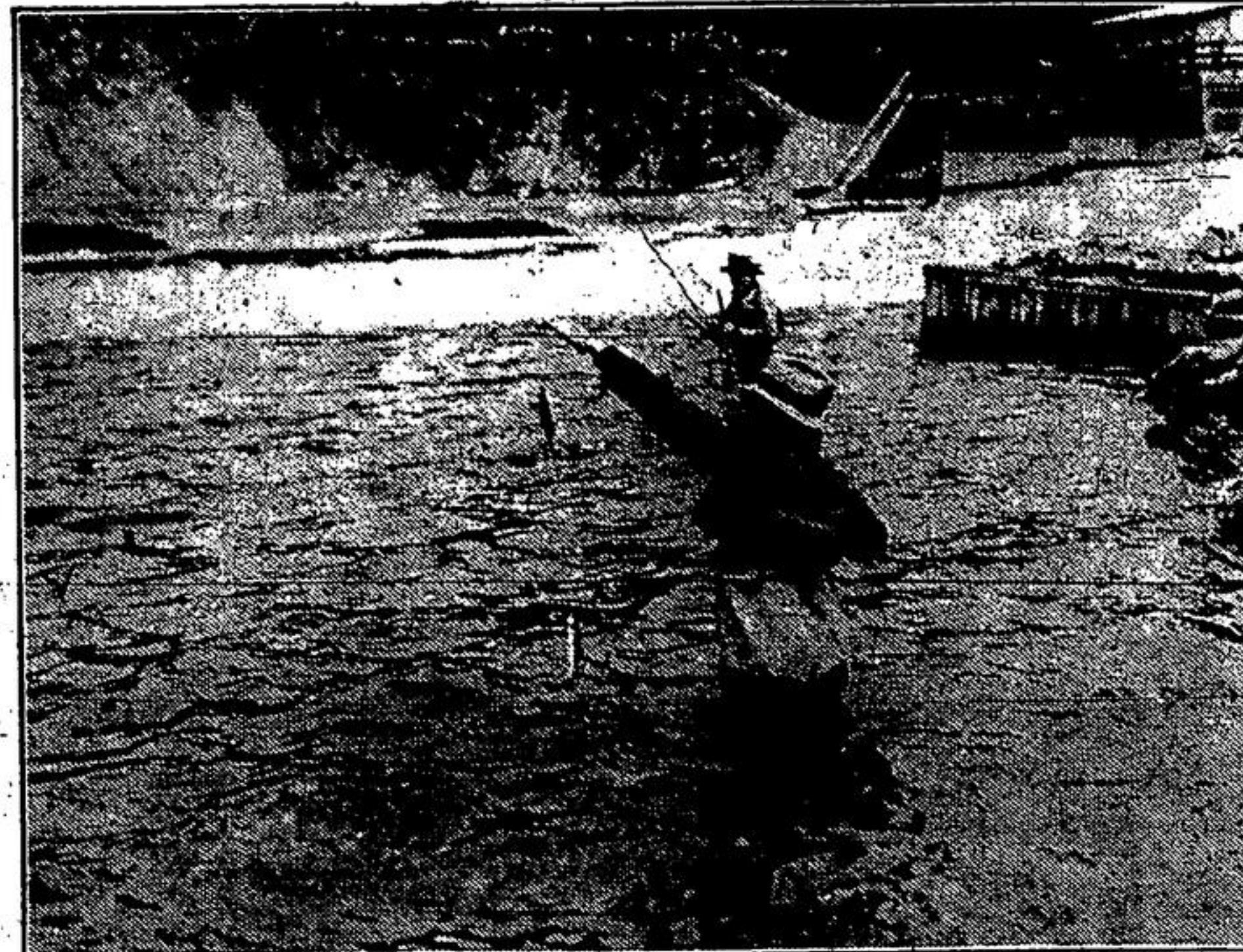
Canada's, from coast to coast, heard the voice of His Excellency the Governor-General and Rt. Hon. R. B. Bennett, prime Minister of the Dominion, May 11, in endorsement of the work of the Canadian Red Cross through stations linked by the radio broadcast transmission system of the Canadian Pacific Railway Company's Telegraphs.

In the last analysis the railroad safety movement's success is traceable largely to teamwork. Each railroad worker is constantly reminded that safety is paramount. Safety practices have become habitual, therefore they do not lessen efficiency. Railroad passenger service is now more efficient as well as safer than ever before, says a prominent United States newspaper.

The new 2 1/2 hour service between Montreal and Toronto, both ways, which came into operation on Canadian Pacific lines end of April, has proved highly popular with travellers and has brought on these trains is reported. Ottawa has also been brought half an hour closer to Quebec and 15 minutes closer to Toronto by the time of the journey.

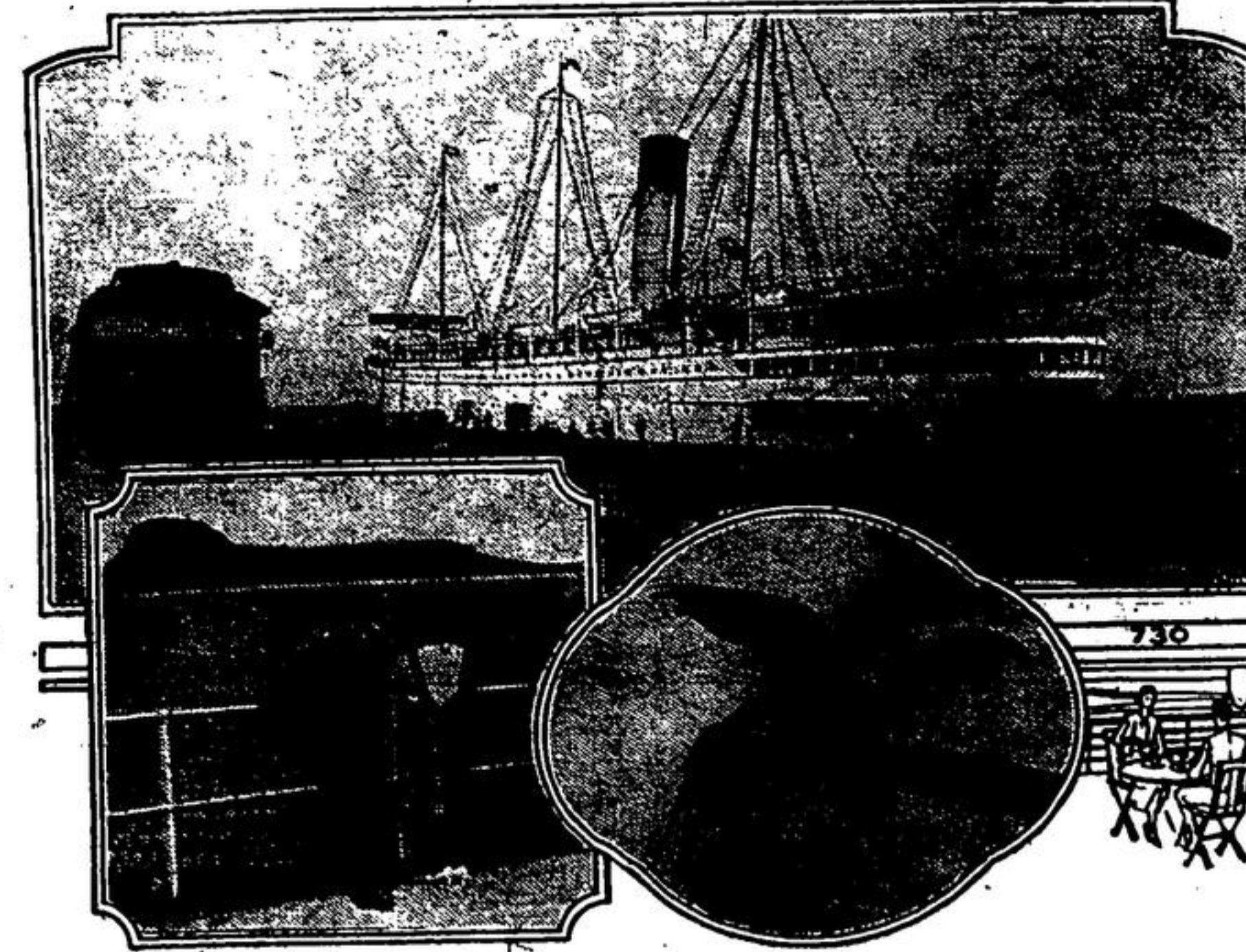
Popularity of the reduced week-end fares which went into effect May 1 on Canadian Pacific lines was assured from the start, according to reports from traffic officials of the company. They represent a saving of approximately 33% to the travelling public with reduced fares available from noon Friday to noon Sunday and return portions up to midnight of the Monday following. (740)

Rivers of Battling Trout



THE trout fisherman finds in Ontario and Quebec, of the Canadian provinces, an angler's paradise. Hundreds of streams, filled with battling speckled trout await him all across the northern sections of Quebec, Algonquin Park and the Nipigon Forest Reserve in Ontario are filled with sporting game fish, awaiting the challenge of the angler. Across the northern sections of these two provinces stretch the lines of the Canadian National Railway, within a stone's throw of the wilderness, and at stations along these lines are guides and outfitters, equipped to take the visitor out to the best fishing grounds. Photograph shows an angler's victory when he has landed two speckled trout on the one cast, from a typical speckled trout fishing stream in Northern Ontario. Scenes such as this are plentiful during the fishing season, when the trout are rising to the fly.—Canadian National Railway photograph.

Summer Travel on the Great Lakes



The Canadian Pacific Railway announces that the company's three passenger ships, plying the Great Lakes from Port McNicoll to Port William, will commence their summer sailing schedules on May 4 from Owen Sound and from Port McNicoll and Port William on Monday, Thursday and two each sailing weekly, one from Owen Sound to Port William on Mondays and Saturdays and from Port McNicoll to Port William on Wednesdays and Saturdays and eastbound Port William to Port McNicoll on Tuesdays and Saturdays. The announcement opens an alluring vista of attractive trips for the tourist who wishes to combine same day. The announcement opens an alluring vista of attractive trips for the tourist who wishes to combine same day. The announcement opens an alluring vista of attractive trips for the tourist who wishes to combine same day. The announcement opens an alluring vista of attractive trips for the tourist who wishes to combine same day.

Undisputed Queen of the Pacific

PACIFIC OCEAN RECORDS		How New Times Compare With Old:	
		Days	Hours
Yokohama to Vancouver	4280 miles	Empress of Japan	8 3 18
		Empress of Canada	8 10 53
Vancouver to Honolulu	2329 miles	Empress of Japan	4 15 50
		Previous Record	5 13 50
Honolulu to Yokohama	3379 miles	Empress of Japan	6 9 43
		Empress of Canada	7 6 11
Kobe to Yokohama	333 miles	Empress of Japan	15m. 54s.
		Previous Record	19hr.

Smashing record after record, the beautiful 35,000-ton Canadian Pacific liner "Empress of Japan" holds an established reputation as the queen of the Pacific Ocean, both in speed and comfort. Her latest accomplishment, on her last 4,280-mile trip, eastbound from Yokohama to Vancouver, was to complete her journey in 8 days, 3 hours and 18 minutes, thus beating her own previous record by 3 hours and 45 minutes. Apart from this she holds records between Vancouver and Honolulu; Honolulu and Yokohama and Yokohama and Kobe. The last-mentioned record is considered the ship's best speed performance in Japan's history. The commander of this great White Empress, Captain Samuel Robinson, indicated after her last trip that she has still more power in reserve and may well hang up another record in the near future.

Job Printing Promptly and Neatly Executed