

FITCHETT'S GARAGE

Corner of Main and George Streets

Repairing done on all makes of cars by first-class mechanics.

Gas, Oils, Tires, etc. Alemite Greasing Car Washing

W. H. FITCHETT
Georgetown
Phone 317

SELL YOUR CREAM AT HOME

Where You Can Get the Highest Grade and the Best Price

Open Every Saturday Night.

Georgetown Creamery Co.
M. Saxe Manager
Avenue for Making Cream Best
Quality. Call and See Them.

FORSTER'S GROCERY

Full Line of Fresh Groceries always in Stock

Bananas and Oranges at the right prices

Ice-Cream in bulk, cones or bricks

... Forster's ...
Terms: Cash Georgetown Phone 29

Erwin & Goldham's Meat Market

Fresh Caught Lake Trout Every Thursday and Friday

Watch our Window for Special Prices on Saturday

Get the Best Phone 1

"THE NEVILLES"

BOT DINNERS LUNCHES AFTERNOON TEAS
SOFT DRINKS CANDIES CONFECTIONERY

Ice Cream dishes served in the daiquiri ways

M. L. NEVILLE
Main Street Phone 65 Georgetown

HydroElectric System

Orders taken for Ranges

—AND—

Appliances of all Kinds

Office - Town Hall

Ready-to-Wear Hats

Felt, Velvet, and Velvet trimmed with brilliants.

A group of clever little hats in new lines and brims.

Head sizes ranging from close fitting types to larger styles for matrons in all the new fall shades.

From \$2.00 up

MISSES CLARIDGE
Herald Block Georgetown

DON'T LOOK FOR FLAUN

Don't look for flava as you go the high life:
And even when you find them
It is wiser and kind, to be somewhat blind
And look for the virtue behind them
For the clouded night has a hint of the light
Somewhere in its shadows hiding:
It is better far to hunt for a star
Than the spots on the sun abiding.

The current life runs every way
To the bosom of God's great ocean;
Don't set your force 'gainst the river's course
And think to alter its motion.
Don't waste a curse on the universe;
Remember it lived before you;
Don't bait at the storm with your puny form,
But bend and let it fly o'er you.

The world will never adjust itself
To suit your whim to the star;
Some things must go wrong your whole life long.
And the sooner you know it the
It is fairly to fling with the infantile.
And go under at last in the vortex;
The water never stops to God's plan
As water shapes into the vessel.

EDUCATED EARS

Who, in traveling a congested bay or river during a heavy fog, has not marvelled at the skill of the man in the pilot house. Once lines are loaded, and the boat emerges from her slip. It is an uneasy business, this navigating, sometimes at high speed, through the impenetrable mist. Passengers on deck cannot see their hands before them. As for the captain, there is, first, the compass. In clear weather he studied and noted the compass course. There is also the captain's watch, for he knows the speed of his boat and how long it takes to cover a given distance. Along with compass and watch, the man in the pilot house must have ears—good ears. There are the warning whistles of other craft and the bells on the buoys and on the wharves along the water front, each bell with its own peculiar tone and stroke. One-three-one, tolls a bell, and on hearing the 1-3-1 the captain knows that he is opposite a certain wharf.

Then there is the echo. It was the ability to read echoes that saved the captain of a North-River ferry boat from serious mishap. Echo-reading is something that one man can neither explain nor impart to another. Yet one can become very clever at it, as the writer learned while crossing the river in a fog. There was a melody of whistles and bells on the wharves. It seemed a chaos of sound to the inexperienced guest in the pilot house. Three minutes out of the slip, the captain put his weathered face out over the top of the lowered window, at the same time sounding the whistle. His face was tense. Suddenly, a look of perplexity on his face, he rang for slowed engines. Almost immediately he signaled for reverse engines. His trained ear had detected something that caused uneasiness. The whistle there been a boat out there, the other captain should have answered. There was no answering signal. The layman concluded that nothing was amiss.

"There's something dead ahead of me," declared the pilot with conviction. "There's no answer—but I know I'm right. I get an echo from something."

With that the captain rang for all speed astern, and the boat, windows all a-tremble, came to a stop and then began to back away.

"There! Look!"

The fog had lifted a little. On deck came the sound of frightened passengers. Just ahead, not ten feet from the bow, towered a huge steel schooner. It was one of a long line of empty barges, and it had broke loose. The lumbering craft drifted across the ferry boat's bow and into the fog.

When the mist had lifted and the captain was no longer under a strain the landman remarked that he had heard no echo resounding back from the schooner. The pilot chuckled.

"But it was plain enough. God gave us ears, but we don't always train them. It's a matter of an educated hearing. Sometimes my ears are tired of school. Then I admonish them that trained minds and faculties make the difference between a good ear and the world and just dragging through."

ESQUEQUING TOWNSHIP

Following is the pay list of the Township of Esqueving for the month of September, 1928:

Georgetown Lumber Co., Georgetown, for work in Stewarttown, 110.00

Georgetown Lumber Co., Georgetown, supplies for gravel bin, 75.83

D. McKenzie Machinery Co., Georgetown, supplies for gravel bin, 14.10

Prod. C. Bonathan, Georgetown, supplies for gravel bin, 20.76

John Moody, Glen Williams, work on gravel bin, 80.45

John Moody, Glen Williams, work on gravel bin, 43.25

John Moody, Glen Williams, work on gravel bin, 40.00

John McDonald, Georgetown, for coal, 3.15

Cardinaly, Georgetown, malle, 12.00

G. B. Bayers, Georgetown, labor on gravel screen, 104.30

B. Walker, Box 527, Georgetown, laying sidewalk in Norval, 164.00

Oscar McKinley, Glen Williams, labor on gravel bin, 12.50

Jas. A. McClure, Georgetown, for freight, 2.65

Jas. A. McClure, Georgetown, for telephone, 2.85

Jas. A. McClure, Georgetown, as Superintendent, 45.23

James Stewart, Acton, draughting 18.00 on Nass, townline, 20.00

D. Robertson & Co., Milton, delivering crushed stone, lots 1, 2, 3, 1st line, 65 yds., 41.25

D. Robertson & Co., Milton, delivering crushed stone, lots 4, 5, 6, 7, 2nd line, 171 yds., 41.45

P. McClellan, Milton, labor spreading, lots 6, 7, 8, 1st line, 24 hrs., 20.00

Peter McClellan, Milton, draughting, 1st line, 20.00

W. H. Allan, No. 3, Acton, ditching, lot 1, 1st line, 20.00

W. H. Allan, No. 3, Acton, labor ditching, lot 1st line, 24.00

D. Robertson & Co., Milton, delivering crushed stone, lots 1, 2, 3, 3rd line, 65 yds., 41.25

D. Robertson & Co., Milton, delivering crushed stone, lots 4, 5, 6, 7, 3rd line, 171 yds., 41.45

D. Robertson & Co., Milton, delivering crushed stone, lots 1-4, 4th line, 321 yds., 41.81

G. Bayers, Georgetown, labor spreading, lots 16-17, 5th line, 55 yds., 30.00

Norman McAlpine, Limehouse, resurfacing, lots 16-17, 5th line, 10 yds., 41.00

Foot, Georgetown, resurfacing, lots 16-17, 5th line, 72 yds., 41.00

J. Newton, Limehouse, gravel supplied, lots 16-17, 5th line, 81 yds., 20.00

J. Toat, Georgetown, resurfacing, lot 16, 5th line, 42 yds., 41.00

J. Toat, Georgetown, resurfacing, lot 17, 5th line, 41 yds., 41.00

Norman McAlpine, Limehouse, resurfacing, lot 16, 5th line, 30 yds., 41.00

Norman McAlpine, Limehouse, resurfacing, lot 17, 5th line, 4 hrs., 41.00

James Wilson, Georgetown, labor spreading gravel, lot 16, 5th line, 35 yds., 15.50

Robert Eason, Glen Williams, gravel supplied, lot 16, 5th line, 54 yds., 1.50

Robert Eason, Glen Williams, gravel supplied, lot 16, 5th line, 72 yds., 2.00

Robert Eason, Glen Williams, gravel supplied, lot 17, 5th line, 2 yds., 18.12

F. J. Murray, Georgetown, making cut at 5th line bridge 114 yds., 45.00

F. J. Murray, Georgetown, ditching at 5th line bridge, 43 yds., 13.50

P. J. Murray, Georgetown, labor at 5th line bridge, 43 hrs., 43.00

P. J. Murray, Georgetown, balance bill over from Jan., 5th line, 32.23

E. J. Vout, Norval, labor timekeeper, 5th line, 41.00

Robert Eason, Glen Williams, resurfacing, lot 25, 10th line, 60 yds., 34.20

Robert Eason, Glen Williams, gravel supplied, lot 25, 10th line, 60 yds., 15.00

Robert Eason, Glen Williams, gravel supplied, lot 26, 10th line, 21.75

Howard Garvin, Glen Williams, resurfacing, lot 26, 10th line, 27 yds., 42.00

John Hancock, Glen Williams, spreading lot 26, 10th line, 234 yds., 590.00

George McAlpine, R.R. Mill, resurfacing, Glen Rd., 3 yds., 54.60

George McAlpine, Limehouse, ditching, 5th to 6th line, 17 sidewalk, 206.00

F. J. Murray, Georgetown, ditching, 5th to 6th line, 17 a.r., 206.00

F. J. Murray, Georgetown, labor 5th to 6th line, 206.00

W. Cunningham, Georgetown, labor 5th to 6th line, 17 a.r., 54.60

W. C. Cunningham, Georgetown, labor 5th to 6th line, 17 a.r., 54.60

George McAlpine, Limehouse, resurfacing, Limehouse a.r., 22 a.r., 42.00

Doughy, Limehouse, gravel supplied for Limehouse a.r., 22 a.r., 23 yds., 42.00

Robert Eason, R. R. Acton, draughting, a.r., 10 hrs., 6.00

CUTTING BOX IS CAUSE OF DEATH OF FARMER

John Garbutt, Chinguacousy Township, Caught in Gear and Neck Broken

A distressing fatality occurred shortly after four o'clock Monday afternoon, Oct. 1st, at the farm of Archibald Beamish, fifth line west, Chinguacousy, when John Garbutt, a well-known farmer of the west side, was instantly killed when his smock became entangled in the gear of a cutting box. He was broken when he struck the ground heavily after being thrown about the cutting box. Several men, engaged in loading Mr. Beamish's straw cutting, were witnesses of the fatality. Mr. Garbutt was greasing the machine, while another man was feeding it when the accident occurred.

Mr. Garbutt had lived all his life in the west side of Chinguacousy. He was in his forty-third year. Willing at all times to assist a neighbor, he was very popular and his untimely death is deeply regretted in the district where he has always lived. Dr. W. H. Erydon, Brampton, was immediately summoned after the accident occurred, but death had been instantaneous. The body was taken to the parlors of Dr. J. A. Lawson, coroner, decided an inquest was unnecessary. Mr. Garbutt is survived by his wife, who resides at Taylor; his father, George Garbutt, Acton; and two brothers, Alfred, West Chinguacousy, and Levi, Alton.

Notice to Creditors

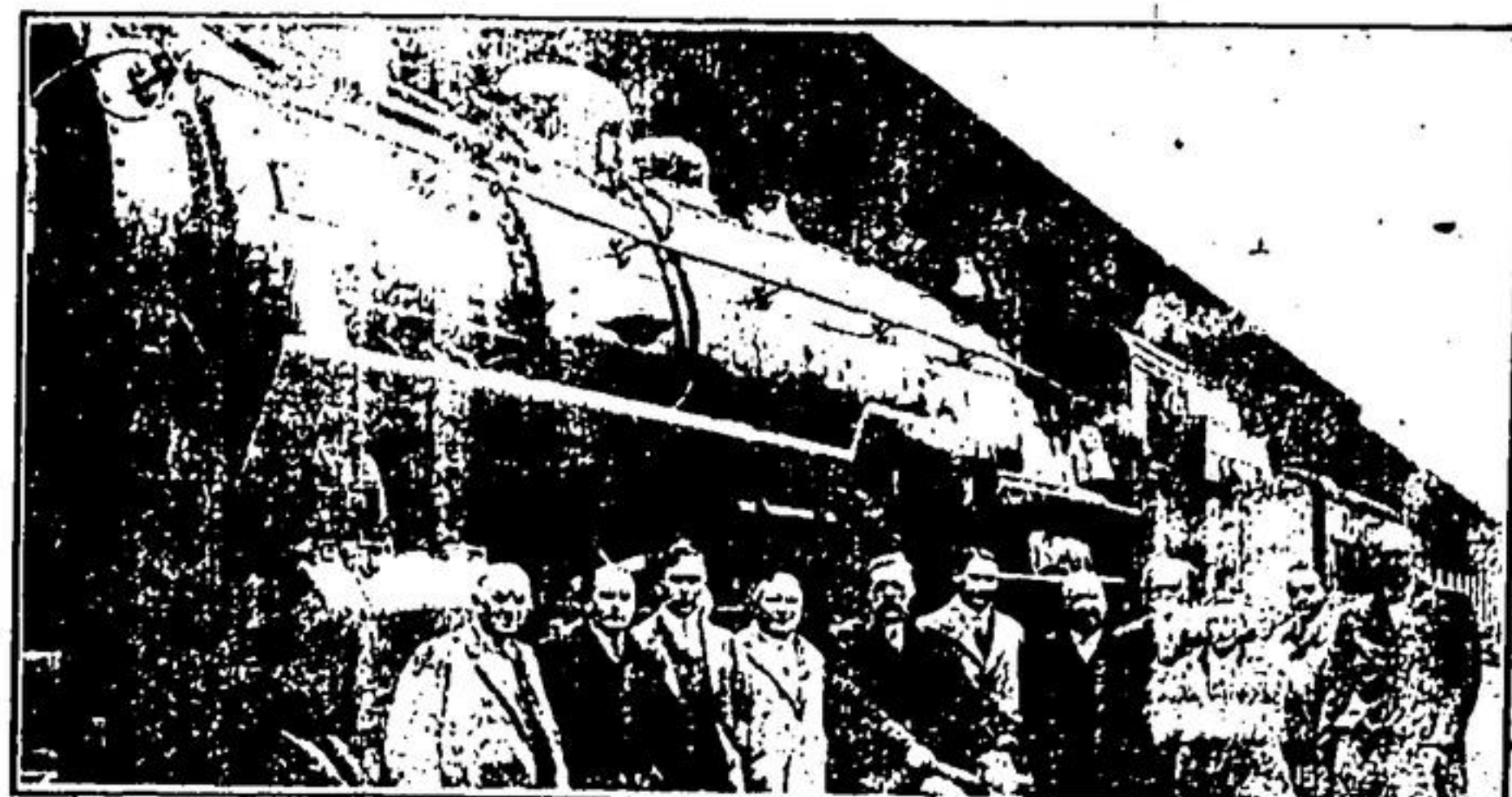
In the Matter of the estate of Samuel Webster, late of the Village of Norval, in the County of Halton, Sheriff, deceased.

Notice is hereby given, pursuant to statute in that behalf, that all persons having claims against the estate of Samuel Webster, late of the Village of Norval, in the County of Halton, Sheriff, deceased, who died on or about the 1st day of May, 1928, at the said Village of Norval, are required to send by post or deliver to the undersigned solicitor, on or before the 15th day of October, 1928, their names, addresses, full particulars of their claims, and the nature of the security, if any, held by them, all duly verified by statutory declaration. After the said date the executors will proceed to distribute the assets of the deceased among the parties entitled thereto, having regard only to the claims of which they shall then have notice, and they shall not be liable for the debts of any part of them to any person of whose claims notice shall not have been received by them at the time of such distribution.

Dated at Milton this 20th day of September, 1928.

THOMAS A. HUTCHINSON,
Milton, Ontario.
Solicitor for the Executors.

3100 Inspected by Empire Delegates



The inspection by the delegates of the British Empire Parliamentary Association of the largest passenger engine in the British Empire; the new Canadian Pacific 3100 afforded an opportunity for a group photograph of a number of prominent members at Windsor Station on their way home. From left to right they are: Roddy, T. D., from the Irish Free State; Josia Francon Tom Naude, M.L.A., South Africa; Hon. L. Cripps, M.L.A., Speaker of the Legislative Assembly of the Colony of Southern Rhodesia; Hon. Ernest George Jameson, M.L.A., Speaker of the House of Assembly, South Africa; Senator William George Thompson, V. D., Attorney-General, Ottawa; G. W. Muston, Montreal; and Major Guy Kintersley, M.P., Great Britain.

DOMINION OF CANADA REFUNDING LOAN BONDS

MATURING 15th OCTOBER, 1928

THE BANK OF MONTREAL, at all of its Branches in Canada, will accept the above bonds for redemption at maturity

For the convenience of owners of the bonds, the Bank of Montreal will accept the bonds at any time prior to October 15th, and will make payment either by issuing a cheque or by placing the amount to the owner's credit in the books of the Bank, as may be desired

"Talkies" Owe Their New-Found Voice to the Telephone



All predictions lead to the belief that talking moving pictures—the Movietone—will be used universally very shortly, and the silent drama will perhaps be less dominant. Engineers of the Bell Telephone Laboratories were making a careful study of the ways in which speech is produced, when they discovered and developed the successive steps that have led to this newest achievement in motion picture entertainment. The telephone is therefore, "Daddy" of the Movietone, which is being rapidly introduced to enthusiastic audiences throughout the continent, with Montreal as the first Canadian city to have installed the required equipment. Maiga Hellamy, Fox Star, is shown above interviewing Sir Harry Lauder. Oval inset shows inspection of a wax disc upon which sound vibrations will be recorded.

Westinghouse
Batteryless
RADIO

Also Radiolas and Battery Models

\$165.00 \$245.00

radio of its best is here

Westinghouse is the Set for You

if you want full six tube power
if you want true-to-life Tone quality
if you want distance and easy tuning
if you want economy and simplicity of operation
if you want year round reception
if you want selectivity, finely balanced
if you want the greatest value offered in Radio

Come in and hear the new improved 1929 Radio Console and Compact Models from \$82.50 to \$395.00

AUTHORIZED WESTINGHOUSE DEALERS
For Batteryless, Battery and the Full Line of Radiola Models

J. N. O'NEILL & SON
Dealers in Radios, Automobiles, etc.
PHONE 14 MAIN ST. GEORGETOWN

AUCTION SALE!

HOUSEHOLD FURNITURE
The undersigned has been instructed by Miss Lily May to sell by public Auction at her residence, Main Street, Georgetown, on

NATURDAY, OCTOBER 13th
at 2 o'clock the following:
Oak Extension Table; Oak Bedstead; Walnut Drop Leaf Table; 5 Small Tables; 9 Kitchen Chairs; 7 Cane Chairs; 3 Rocking Chairs; Arm Chair; 2 Mahogany Parlor Chairs; 2-piece Oak Bedroom Suite; 2-piece Bedroom Suite; Bedstead; 2 Beds; Bedstead; 2 Feather Beds; Feather Pillow; Walnut Sofa; Tapestry Rug 10' x 12' ft.; Loudous Square 12x13 ft.; Hall Oilcloth; Bedroom Carpet 8x11 ft.; Bedroom Carpet 8x11 ft.; Quantity of Rug Carpet; Hall Mirror; Small Mirror; Pandora Range with heating chest; Number of Stone Pipes; Vacuum Cleaner; Carpet Sweeper; Lawn Mower; Washing Machine; 6-piece Toilet Set; 3-piece Toilet Set; Washboard; Window Blinds; Curtains; Drapes; Parure; Lamp; Brass Kettle; Ten Kettles; 2 Iron Pans; Iron Pressing Pan; Thaler; Crocks; Kitchen Utensils; Dishes; Numerous Other articles.

Terms—Cash
Ben Petch, Auctioneer

You'll Drink It Again

GOLD MEDAL COFFEE

P.S.—
"Station-to-Station calls are cheaper."

Mrs. Allen wonders why calls to her home cost 40c, while Mrs. Brown's cost only 30c.

"Always, always, call. The reason lies in the receipt of Mrs. Brown's letter. 'Call me regularly... Station-to-Station calls are cheaper.'"

So Mrs. Brown gives the distant telephone number and tells the operator, "Anyone there will do." That makes it a Station-to-Station call.

The low evening rates (after 8:30 p.m.) and still lower night rates (after midnight) apply on such calls; and, usually, connection is made while you remain at the telephone.

Do as Mrs. Brown does. Remember the postscript.

No Shovelling Required

STANDARD ANTHRACITE SCRANTON COAL
In all Sizes

Automatically Screened and Loaded.

Coal Wood

Select Lump for Domestic and Threshing purposes. Smithing and Cannon Coal. In fact I carry everything to be found in any up-to-date Coal and Wood Yard.

John McDonald
PHONE 18
Georgetown