

Here and There

Tremendously rapid development of forest and water power resources of the Province of Quebec is indicated in the forecast of revenue totalling \$6,000,000 from these sources for the current year.

Sixty men from the training camps in Brandon and Clayton, England, have been accepted by the Canadian Government and called on the "Empress of France" at the end of June.

Saskatchewan exported last year 77.4 per cent. of its total production of creamery butter, according to a statement made by the Provincial Dairy-Commissioner.

Close on one hundred pilgrims from St. Paul and Minneapolis passed through Montreal recently on their way to the famous shrine of St. Anne de la Pocatiere, Quebec.

Hundreds of students and co-eds from Canadian and American universities have been passing through Montreal recently to board ships for Europe in connection with the Overseas Collegiate Tours that have grown increasingly popular of late years.

Ciad in gorgeous scarlet tunics, plentifully decorated with gold braid, forty members of the world famous Coldstream Guards Band, of London, reached Quebec recently on the Canadian Pacific liner "Montcalm".

The electrification of the main line of the Imperial Japanese Government Railway system from Tokyo to Shinjokai, 750 miles, has been long projected, and recently the 45-mile section between Tokio and Odawara has had experimental trains drawn by electric locomotives run twice a day between these points.

Founded 92 years ago in gardens on the site of which the Canadian Pacific Railway Windsor Street Station in Montreal now stands, the St. Jean Baptiste Society of that city celebrated that event on June 24th, last by having a memorial tablet affixed to the walls of the station.

Negotiations have been completed for the erection, and work will shortly commence, upon a terminal warehouse and cold storage plant, to cost about five million dollars and to be situated on the east side of the city.

J. H. SMITH Stewarttown

Wire Fencing of all kinds Fancy and plain gates, and posts, of all kinds

ICE! ICE!

We have a large quantity of ice stored for customers and will deliver daily. Please your order and arrange for service T. A. W.

WOOD

of all kinds delivered in town. Kindling a specialty. Prices right. J. H. Smith, phone 84-13

COAL!

Best D. L. & W. Scranton Coal in all Sizes Also Smithing and Steam Coal Mrs. J. Watkins North Station Phone 62-24

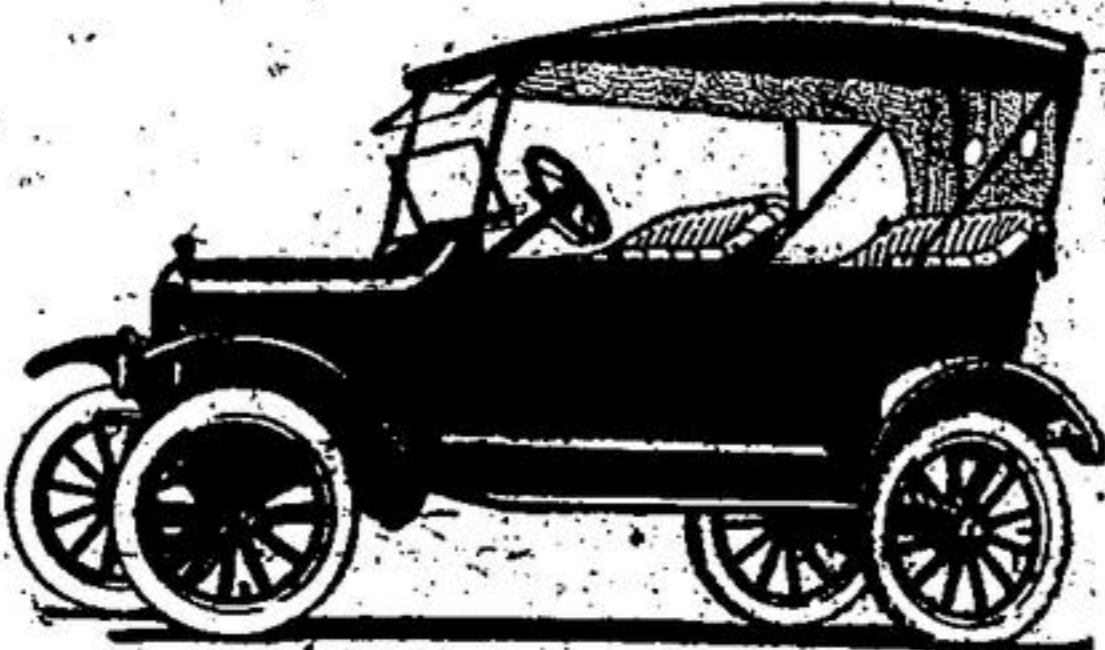
Tinsmithing, Plumbing Heating, Electric Wiring

You will find us in the same stand as usual with Gibram and Clements.

ESTIMATES GLADLY GIVEN CAREFUL ATTENTION TO REPAIRS

J. W. KENNEDY

PHONES: Shop 25 House 189



FORD GARAGE

in Georgetown OUR Sales and Service Station

is now open for business and a first class mechanic will give prompt and efficient service

Tires, Gas, Oils and all Ford Accessories always on Hand

H. A. Coxe

Main St. North Formerly Brown's Garage

Erwin & Goldhams' Meat Market

Prime Steer Beef Milk Fatted Veal Choice Spring Lamb and Pork All meats kept in Electric Refrigerator GET THE BEST PHONE NO. 1

Hydro Electric System

60 watt Lamps 4 for \$1.00 Guaranteed Lamps

Table listing lamp specifications and prices: 25 watt & 40 watt .59, 60 watt .87, 100 watt Tungsten .95, 100 watt Nitro .85, 150 watt Nitro .95, 200 watt Nitro 1.15

cross guaranteed 1 year \$4.75 Hydro Irons guaranteed 5 years \$8.75

Orders taken for ranges and appliances of all kinds

Office Town Hall

Brantford ROOFS

MAKE YOUR HOME BEAUTIFUL with a Brantford Roof of Asphalt Shingles. You can have a soft, smooth roof of any color or combination of colors that please your taste.



Brantford Roofing Co. Limited, Brantford, Ontario. Branch Office, Georgetown Lumber Co., Ltd., Georgetown.

When the First Trans-Canada Pulled Out



The first Trans-Canada train in 1886. The Trans-Canada of 1926.

The fortieth anniversary of the first Trans-Canada train has recently been celebrated by the Canadian Pacific Railway. It was the 28th of June 1886 when the train pulled out of Dalhousie Square Station, Montreal, on its long pilgrimage of 2,290 miles across the Dominion.

The old locomotive which pulled the first Atlantic Express into Port Moody, now Vancouver, looks quaint to modern eyes. It burned cordwood, and with its big smokestack and generous display of polished brasswork it made an imposing spectacle.

Today we travel across to Vancouver in 89 hours, with all the comfort and modern conveniences of this age and confident of arriving on time.



'Life-Buoy' Tennis and Outing Shoes A Complete Line now in Stock for Men, Women and Children D. BRILL & CO. Georgetown

Appreciation Canadian Car Buyers Recognize Values

The best evidence of value in the New Star Car is the testimony of the buying public, as shown by the constantly increasing sales. During the period ending June 30th, 1926 the sale of New Star Cars showed an increase over the corresponding period of 1925 of 35.5%

The New Star Four and the New Star Six are acknowledged leaders from the standpoint of Economy, Durability, Performance and Beauty. T. J. SPEIGHT Sales Rooms Guelph St.

Durant Motors of Canada, Limited Toronto (Leaside) Ontario

The NEW Star CAR A Complete New Line of Fours and Sixes

Try an Advertisement in the 'Herald'

TOMATO IS POPULAR

POINTS TO NEARBY SUCCESSFUL PRODUCTION.

Wide Range of (White Both With Reference to Hells and Perillitones - Fruiting and Harvesting.

(Contributed by Ontario Department of Agriculture, Toronto.)

Tomatoes are grown extensively as a truck crop, as a market garden crop and in the home garden. The field acreage grown for canning in Ontario has reached many thousand acres.

The tomato does well on a wide range of soils. However, for the early crop light sandy or gravelly loams are preferred, while for a heavy field, heavy loam or rich sandy loam or clay loam are preferred.

Fertilizers and Manures. General recommendations at best can only be a guide for the use of fertilizers and manures with this crop.

The character and treatment of the soil, along with what may be the ultimate use of the crop, together with the length of season for the district, all help to suggest what treatment is needed.

It is generally recognized that the tomato crop requires a soil in a high state of fertility. Fresh manure should not be applied just previous to the setting of the plants, far better if applied the previous autumn, or with the previous crop.

Tomatoes will do well following clover, ploughed under the previous autumn. Of the commercial fertilizers, those bearing relatively high quantities of available phosphorus are most generally satisfactory.

Sometimes the right application of nitrate of soda applied just when early plants are getting a start is useful to help them on after the shock of transplanting from frame to field.

Since early fruiting and ripening is important with this crop, too much nitrogen will prolong the growth at the expense of early fruiting.

Tomato plants are tender and should not be set out into the field until after danger of frost is over. Previous to setting them they should be well watered and as much of the soil and roots be moved with the plant as possible.

It is well to choose a dull day or else delay planting until late afternoon.

The usual distance of setting the plants is four by four feet. Various methods are used to facilitate the work of setting.

Some growers plough out furrows, others mark their beds and dig the holes, while the most common method with the small grower is to use a trowel in setting the plants.

It is good practice to set plants somewhat deeper than they were growing in the pot or box. Firm the soil well around the roots of the plant, this is important.

Cultivation. Cultivation should be frequent. Keep all weed growth down. As the plants develop the ridges should become more shallow and finally cease when injury to the roots is noticed.

Growing Staked Tomatoes. Many commercial growers produce a crop of tomatoes from plants supported by stakes and pruned to a single stem cut in a conical way to grow the home garden crop.

Training. Plants may be set from twelve to eighteen inches apart in rows that are three or four feet apart.

Pruning. Pruning should be done when the plants are in full bloom, have been made to determine the amount of carbohydrate and both soluble and insoluble nitrogen present.

The roots of plants that were allowed to come to full bloom and harvested only twice in the season, as a big factor in carrying the plants over winter.

Many alfalfa fields are ruined by late September and October cutting—the roots are left in a too weakened condition to stand the rigors of winter.

A fourth laboratory analysis and field test of the commercial product known as "Solgar" by the O. A. College by special request. The results of this test tallied with those that were previously reported by the Department, and were to the effect that this product, which retails at six dollars per gallon, is of no benefit to crops on ordinary soil.

High School Students start on July 5

Guelph Business College Summer school Special-Short Course, Register Now

Special rate good only to July 10 Guelph Business College

Guelph Business College Guelph, Ont. A. L. BODDY, Principal and Proprietor

Notice to Creditors

In the matter of the Estate of Jesse Kennedy, late of the Township of Esquimaux in the County of Halton, Spinner, deceased.

NOTICE is hereby given that all persons having any claims or demands against the late Jesse Kennedy who died on or about the eleventh day of April, 1926, at the Town of Weston, in the County of York, and Province of Ontario, are required to send by post, prepaid, or deliver to the undersigned, solicitor-at-law for Thomas W. Kennedy, executor and trustee under the will of the said Jesse Kennedy, their names and addresses, the full particulars in writing, all their claims and statements of their accounts, and the nature of the securities, if any, held by them accompanied by a statutory declaration verifying same.

AND take notice that after the twenty-fourth day of July, 1926, the said Thomas W. Kennedy will proceed to distribute the assets of the said deceased among the persons entitled thereto, having regard to the claims of which he shall then have had notice, and that the said Thomas W. Kennedy will not be liable for the said assets or any part thereof to any person of whose claim he shall not then have received notice.

Dated at Georgetown this third day of July, 1926.

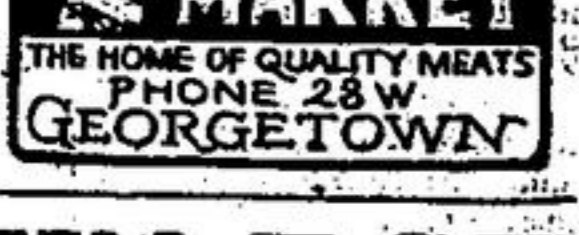
H. G. MEIR, Georgetown, Ontario, Solicitor for the said Thomas W. Kennedy



It has been proven that the best paying job of all is being on the level.

SUPERIOR meats—the kind that make good in the court of last resort—the dining room.

If you want unfailing quality and courtesy, come!



WATCH

our window for week-end candy specials and do not forget to get your share.

Our baking is still selling well and remember that it is all the real Home-made kind. Give us a trial.

PECKETTS

Home-made Candy and Bakery

Coal

BEST Anthracite Coal Always on Hand

Nat and Stove Coal Small Egg Coal Large Sized Pea Coal delivered to any part of the town

Also COKE PHONE 180 F. ROGERS & CO. GEORGETOWN

LADIES!

SHAMPOOING MARCELAGING AND CURLING FRIZZING AND SINGING Try us, our prices are reasonable

Mr. & Mrs. J. H. LILICO Appointment Phone 2706 & 1 FISH & CHIP CAFE

All Kinds of Fresh Fish Phone Orders Delivered Good meal for 25 cents.

T. H. Hewitt Phone 259 Georgetown

COLLECTIONS

We handle collections only 10 years' experience speaks for itself, accuracy, efficiency and reliability.

Kelly & Aiken COLLECTORS Orangeville and Owen Sound Ref: Standard Bank of Canada