



FOODFACTS
YOU SHOULD
COME IN
AND SHOP
AROUND
A BIT

Alyon Tomato or Vegetable
soup 2 for 25c
Strawberries per can 25c
Cherries per can 25c
Finest sliced pineapple 25c
Pure raspberry and strawberry
jam large jar 75c
Pure orange marmalade 52c
Green peas in pkts 2 for 25c
Cippa plant food 120 lbs 45c
Quick shine stove polish 15c
Quick shine pipe wash 50c
Royal Blend tea to introduce
1 water glass free per lb 75c

Serv-Us Corn Flakes
the red and white package 2 for 25c

PHONE FOR IT
229
MARK CLARK
GROCERIES & BAKERY
GEORGETOWN

Yes—
You can start on Monday
and have no forced breaks in
your course.

Session the Entire Year
at the
Guelph Business College
where
Individual Instruction
is given

The Business World is calling
for more Guelph Business
College graduates. There is
a position for you.

Get the Training

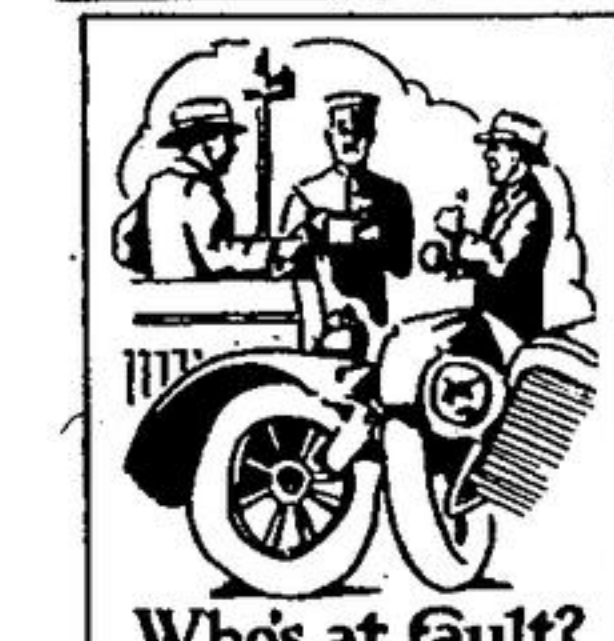
A. L. BOUCK,
Principal and Proprietor

Wall Papers

Our 1926 samples to hand
we offer a splendid choice
of

Interior Decorations
If you are going to re-
decorate any of your
rooms, do it now. This is
going to be a busy sea-
son, act now and save
disappointment. Ask
to see my samples. Es-
timates given.

E. BLUDD
Paper-Hanging, Outside
and inside painting
Natural wood finishing.
PHONE 5 F 5



Whos at fault?
Are you ready for
such an emergency?
Complete automobile
insurance safeguards
your driving.
INSURE NOW

ELMER C. THOMPSON
Insurance Service
GEORGETOWN ONTARIO

FISH & CHIP CAFE
Lake Trout and Special Fresh
Fish will be coming in shortly
Good meal for 25 cents.
T. H. Hewitt
Phone 259 Georgetown

Collections
We Handle Collections Only
—No Sideline
Nothing too old, small, large
or hard for us to tackle.
34 years in same office
NO COLLECTION—NO CHARGE
Kelly & Aiken
COLLECTORS
Orangetville and Owen Sound

AMERICAN FOUL-BROOD

THE ONE SERIOUS DISEASE BEE-
KEEPERS MUST MEET.

Progress is Being Made, But Further
Co-operation With Government
Men is Essential.

Contributed by Ontario Department of
Agriculture, Toronto.

During the past three years there
has been considerable investigation
work in connection with the treat-
ment of American foulbrood and Dr.
J. C. Hightman, of Ohio, introduced
a solution composed of alcohol for-
malin, which has been used in many
places for the purpose of killing
and eradicating American foul-brood
in the drupe comb used by the bees.

In the late winter and early spring
of 1924, Prof. Jones, of the Entomol-
ogy Department, introduced a num-
ber of laboratory cases of American
foulbrood to the attention of an ex-
perienced beekeeper, Mr. G. L. Jones,
who used a number of well-known
chemicals and disinfectants, and his
conclusions were that so far as Amer-
ican foulbrood was concerned, the
most effective method was to treat
the colonies with alcohol-formalin.

In the summer of 1924 Mr. G. L.
Jones, and in 1925 Mr. G. L. Jones
and Mr. M. Pugh, of the Agricul-
ture Department, carried out a num-
ber of experiments in the apary, us-
ing infected combs which had been
treated with various strengths of for-
malin and water and alcohol-formalin.
Combs packages of bees, from
the south, were placed on these
reated combs and results noted.
This experiment will be conducted
again in 1926.

The results of the apary experi-
ments, thus far, show that there is
a very serious danger when the bee-
keeper saves infected brood combs
for treatment with either alcohol-
formalin or formalin-water solutions.
In some cases American foulbrood
has reappeared in some of the col-
onies having treated combs.
Destroy All Infected Combs.

The Department has come to the
conclusion that it will pay the bee-
keepers to destroy all brood combs
infected with American foulbrood for
these reasons: (1) It has been de-
termined that the Department
cannot afford to keep infected combs
for later treatment, his own and all healthy
colonies in a radius of two or three
miles are in danger of becoming in-
fected; (2) the cost of the equipment
and solution is prohibitive unless a
thousand or more combs are to be
treated; (3) we are not yet satisfied
that we can treat infected brood
combs with 100 per cent. alcohol-
formalin.

Prevention—Not Control.
With the positive knowledge that
beekeepers can effectively treat all
super combs, which have been used
for infected colonies, the Depart-
ment is changing its method of apary
inspection work, and last year an ef-
fort was made to eradicate, not con-
trol, American foulbrood in the
counties of Hastings, Peterborough,
Northumberland and Prince Edward.
The results show that 5,003 colonies
were examined, 417 were found in-
fected with American foulbrood and
the contents of those infected col-
onies were destroyed by burning. This
burning of over 66 colonies in these
counties might appear to be a serious
loss, but it must be remembered that
a colony with American foulbrood
soon ceases to produce a surplus of
honey and, while it remains, it is a
menace to all other healthy colonies
in the vicinity. Once American foul-
brood is cleared out, then the bee-
keeper can go ahead and keep his
more profitably and more economically.

The Department hopes to bring
other counties into this clean-up cam-
paign in 1926 and generally within
the campaign until the whole prov-
ince is included. To make the work
as effective as possible, the Foul-
brood Act has a quarantine measure
which will prohibit a beekeeper mov-
ing any but combs less or inspect-
ed healthy colonies into those coun-
ties where a clean-up of American
foulbrood has taken place.—Agricul-
ture Department, O. A. College.

Grain & Seed for Sale
Choice Seed Oats, O.A.C. and Rennie,
Early Yields, Choice Seed Barley, Lu-
ceme, Red Clover, Alsike, Timothy, best
qualites, Government Standard. Alex.
L. Noble, Georgetown Elevator, 2mos.

For Sale
Oats, Barley, Buckwheat. Whea-
t—W. R. Browne & Co. Norval

Low Brothers
OUTSIDE PAINT
Low Brothers "High Standard" Lead and
Oil Paint will not only Protect, Beautify and
increase the value of your home, but will
save you money. High Standard is the most
economical paint, figuring by the job cost,
that you can buy.

By reason of the excellence of the materi-
als used and the care exercised in its manu-
facture, "High Standard" covers half as
much more surface than a so-called cheap
paint.

High Standard is very easy to apply. It
is ground so fine that it works easily under
the brush, flowing out evenly and leaving no
brush marks. It covers perfectly and pro-
duces a beautiful high gloss that endures for
years. It fades slowly, leaving the surface in ex-
cellent condition for re-
painting.

High Standard is a
high grade lead and oil
paint made in thirty
handsome shades and in
all sizes.

\$100.00
FOR SOME ONE
AND VALUABLE PRIZES
FOR 49 OTHERS

1st PRIZE
\$100.00
IN GOLD

2nd PRIZE
\$55.00
Value—complete,
standard, late top
Fischman Inner Spring
Mattress.

3rd PRIZE
\$40.00
Value—Standard,
late top Fischman
Inner Spring Mat-
tress.

4th PRIZE
\$29.50
Value—Fischman
Special Inner Spring
Mattress.

AND
46 PRIZES OF \$2.00 EACH
Can You Find the 8 Points of Excellence
IN THE
Fischman
INNER SPRING MATTRESS
GUARANTEED FIVE YEARS

Here is an opportunity to win \$100.00 in gold or one of the other
49 prizes. This is how to do it.

See the Fischman Inner Spring Mat-
tress at your nearest dealer's (name
below) and ask him to tell you why the
Fischman is superior to all other mat-
tresses.

Then write and tell us in as few words
as possible what the eight points of
excellence are in the Fischman Inner
Spring Mattress.

We want ideas to be used in our ad-
vertising and we are willing to pay for them.

The eight points of excellence are out-
standing and, with a little help from
your dealer, should be easily discovered.

SEND IN YOUR ANSWER TODAY
THIS CONTEST POSITIVELY CLOSSES MAY 13TH AT MIDNIGHT

Prizes are to be awarded for the statements which are considered by the judges
to be the best for advertising purposes. Write on one side of the paper only—all
answers to this contest become the property of the Fischman Spring Company,
Limited, and the decision of the judges is final.

Do not send any money—just a short, concise statement of what you consider to
be the eight points of excellence in the Fischman Inner Spring Mattress.

FISCHMAN SPRING CO., LIMITED - KITCHENER, ONT.
Fischman Inner Spring Mattresses may be seen at the
dealers listed below.

W. H. WILLSON

J. SANFORD Stewarttown
Plumbing & Tinsmithing
Estimates Cheerfully Given
Phone 84 r 12
Georgetown - K.R. No.

Erwin & Goldham's
Meat Market
Home-killed Lamb & Veal
BEEF and PORK
Dressed Chickens Wanted

W. H. Willson
Undertaker and
Licensed Embalmer
Main St., Georgetown
Automobile or Horse-Drawn Hearse
Phone, night or day, 54e or 57f

Quick Delivery Guaranteed
Main Street, Georgetown Phone No. 1

R. H. THOMPSON & CO.
Phone 46 Georgetown

We offer to our customers at all times, strictly quality products at reasonable prices. In first
as well as last cost they are the most economical and the most satisfactory. This is particularly
true of Paint Products which vary exceedingly in quality and service. We stand behind Lowe
Brothers High Standard Paints and Varnishes as the best and most economical paints sold in
Canada.

Low Brothers

Neptunite Varnishes
Are carefully prepared to with-
stand the element and severe ex-
posure. They are light in color,
work easily, flow freely and dry
with a rich gloss. They will not
turn white under the Hot Iron test
and are unaffected by hot or cold
water.

They produce a remarkable,
beautiful, elastic finish that will
stand all kinds of hard wear with-
out cracking or chipping.

Neptunite costs no
more than a most
good varnish yet
they last longer than
most and present an
extremely attractive
and durable surface.
Made in all sizes
and for various pur-
poses.

Mellotone Flat Paint
Beautiful, Economical, Sanitary.
Mellotone is all these. Mellotone
possesses all the soft, delicate beauty
of water paint, combined with the
durable elements of a lead and oil
paint. It is especially made for
interior decoration.

Anyone can apply it according
to directions. It leaves no brush
marks or overlappings. Mellotone
presents that perfect
flat surface that is so
desirable.

Mellotone may be
washed with soap and
water as often as
necessary without in-
jury to its finish.

Interior Floor Paint
Scrubbing is a thing of the past
when you use Low Brothers Hard
Drying Floor Paint. The finish
produced by the floor enamel is so
smooth and uniform that you can
easily keep your floors clean by
mopping.

Hard Drying Floor Paint is a
varnish paint that dries over night
with a high gloss.
It is so easy to
apply and so dur-
able that its eco-
nomy is assured.
It covers perfectly
and wears off
evenly.

Comes in a va-
riety of pleasing
shades and in con-
venient sizes.

O. A. C. NO. 144 OAT

NEW VARIETY WHICH IS NOW
TAKING THE LEAD.

Now Eligible for Registration in
Canada—Interesting Notes on Soil
and Dairy Matters.

Contributed by Ontario Department of
Agriculture, Toronto.

Within the past three years the
O. A. C. No. 144, which is a new
variety originated at Guelph, has
made a particularly high record
throughout Ontario, as can be seen
from the following table:

VARIETIES	STRAW (TONS) CHAIN (TONS)	
	1925	AVERAGE
O. A. C. No. 144	1.43	1.55
O. A. C. No. 1	1.06	1.16
Liberty Hybrid	1.27	1.37

Of all the varieties, strains and
hybrids of oats grown in the experi-
mental plots in 1925, the O. A. C.
No. 144 gave the highest yield per
acre as it did in 1924. At the annual
meeting of the Canadian Seed Grow-
ers' Association which was held last
June at Edmonton, Alberta, this new
variety of oats was accepted as elig-
ible for registration in Canada. This
is the only variety of oats which has
been added to the eligible list for
several years.

The O. A. C. No. 144 variety of
oats was started from a selection
taken in 1912 from amongst plants
of O. A. C. No. 72 variety of oats.
It is decidedly different, however, from
the latter and seems distinct from
any other of three hundred or more
named varieties of oats which have
been tested for five years and up-
wards at the Ontario Agricultural
College.

The O. A. C. No. 144 is a tall,
vigorous, broad-leaved, exceptionally
dwarfed, late variety of oats
which possesses a spreading head and
a long, slightly brownish white grain
practically free from awns and which
produces a heavy yield of both grain
and straw of good quality. The
ripening crop has a beautiful appear-
ance with a golden tinge.—Dept. of
Extension, O. A. College.

DAIRY NOTES.

Don't Overall the Churn.
Butter of good quality can be
made by separating fresh whey at
the cheese factory and churning the
whey cream, with or without ripening
the cream.

Skim-milk powder mixed at the
rate of one pound of powder to nine
pounds of pure water makes a good
culture or starter for ripening cream
where it is considered advisable to
open cream for churning.

Overloaded churns cause a heavy
zone of fat in the buttermilk. Churns
should not be filled over one-half full
of cream.

The acid-alkali test for skim-milk
and buttermilk shows that the losses
of fat in dairy by-products is
greater than is commonly supposed—
about double that shown by the or-
inary Babcock method of test.

Skim milk and buttermilk may be
condensed or powdered and then be
used for feeding pigs and poultry
with satisfactory results. The ad-
vantage of this plan is that it saves
the bulk and puts it in a position
where it will keep in storage.

Butter cream may be "neutralized"
with bicarbonate of soda and be used
for ice cream manufacture. "Im-
provers" or "ripeners" above the
time required for ripening the cream
without lessening the overrun and
without deteriorating the quality of
the ice cream made by their use.—
Dairy Department, O. A. College.

QUALITY AND PRICE.

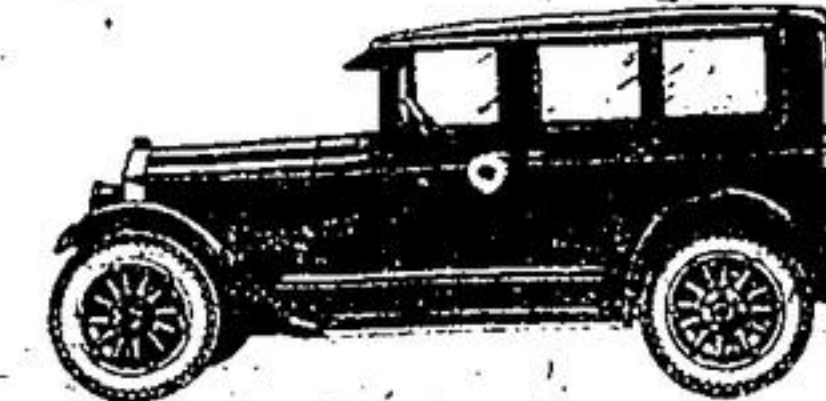
The Price Difference is the Stimulus
for Improvement.

The market demands quality, every
article of farm produce needs be like
every other article of the same grade
or class. Buyers demand this and if
they do not get it they go where
uniformity of grade and quality
standards are maintained. On farms
where the production is mixed, this
is mustard and oats, chickens of all
colors and shapes, or pigs of vari-
ous descriptions, etc. quality prod-
ucts are not in evidence. So the
first move toward quality products is
either a specialized or diversified
type of farming where the elements
of production are at least themselves
uniform, and capable of producing
quality.

Get started right this spring. Use
the best grades of the best varieties
for seeding, eggs from the best hens
for hatching, and the stock of a type
that is likely to produce market top-
pers. High quality goods are always
in demand at fair prices.—Dept. of

"In Every Way—Better"

added Economy



THE McLaughlin-Buick operating costs are
very low. This car is thrifty—both in pur-
chase price and ownership.

The McLaughlin-Buick design protects all operat-
ing parts from dust and wear—barricades them with
iron or steel housings in the McLaughlin-Buick
"Sealed Chassis" and "Triple Sealed Engine".

The famous McLaughlin-Buick Valve-in-Head
engine develops more power from a given quantity
of gasoline than other types of engines.

And now, the McLaughlin-Buick oil filter makes it
necessary to change crankcase oil only at rare
intervals.

Even smaller, less powerful cars do not match the
Better McLaughlin-Buick in low cost of operation
and maintenance. You add to your power to
economize when you buy a Better McLaughlin-
Buick.

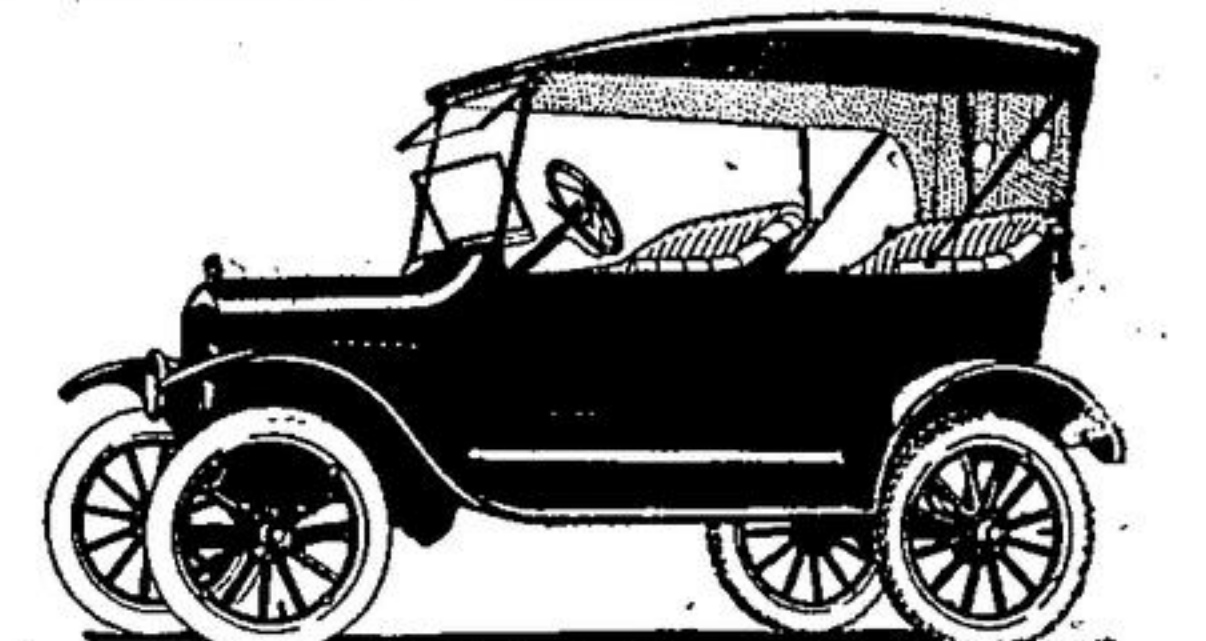
The new low GMAC financing rates are available
to purchasers of McLaughlin-Buick on time.

S. V. KING
DEALER
McLAUGHLIN-BUICK

USED CARS!

1922 Dodge Touring
1920 Dodge Touring
1921 Chevrolet Touring

J. N. O'NEILL & SON
Main St. Georgetown



FORD GARAGE

in Georgetown
OUR
Sales and Service Station
is now open for business and a first class me-
chanic will give prompt and efficient service

Tires, Gas, Oils and all Ford Accessories always
on Hand

H. A. Coxe

Main St. North Formerly Brown's Garage
Speight's Garage and Battery Service
Guelph St. (On the Highway) Georgetown

Let Battery experts care for your battery through the winter
months. We call for and deliver batteries **Free**.
Having installed one of the latest type of cylinder grinder
we are now in a position to do re grinding work. Get our
prices on having your motor re-ground and fitted with new
pistons and rings this winter, our low prices will surprise
you. We also handle all kinds of electrical work, including
Generators, Starters, Magnets, Oxy-Acetylene welding
and General Machine Work.

Phone 280 Day or Night
ARTHUR R. SPEIGHT Proprietor

BUY K. & S. TIRES
We carry a complete line of High Pressure and Balloon K. &
S. Tires and Tubes. The well-known tire of Supreme quality
Our prices are exceptionally low. See us before buying.
Expert Repairing—all repairs guaranteed
to give service.

F. SINCLAIR
"The Tire Repair Shop"
PHONE 26 GEORGETOWN