

Here and There

All previous records set by the Manitoba Telephone System, a provincial all-government owned and operated utility, were surpassed in July, when net earnings for the month were \$115,154. A surplus of \$100,000 was predicted for the present fiscal year.

According to an estimate made by Quebec Automobile Club officials from data supplied by transportation companies and garages, 200,000 tourists have already passed through Quebec this year. This, it is explained, is an increase of twenty per cent over the total for the whole of last year.

Building permits issued in Winnipeg since the beginning of the current year to date have topped the three million dollar mark, being \$3,084,840 for 1,704 structures. For the corresponding period of last year the total was \$2,289,450 for 1,724 buildings, an increase in value for this year of \$745,390.

Heavy shipments of this season's crop of potatoes in Fredericton, N.B., are now being made to the Cuban market from the potato belt on the Upper St. John River, according to the provincial superintendent of the crops and soil division of the Department of Agriculture. There have been large consignments from Carleton and Victoria counties.

Greater Montreal population is now estimated at 1,028,000, according to the 1925 issue of Loyal's Montreal Directory, just published. Population of the city proper is estimated at 907,500. Population in the suburbs and surrounding country is given as 120,500. The last estimate of Greater Montreal's population, by the same authority, gave the population as 979,027.

A party consisting of twelve Chinese students from Hong Kong and Peking arrived in Montreal yesterday to take part in the annual convention of the Canadian Pacific Railway, in order to familiarize themselves with the railway situation in Canada. They will remain a few months and then return to China to make practical use of the information they acquire.

Among the notable personages who arrived in Canada during the first week in September from Europe were Princess Patricia, Sir Thomas and Lady Griston, and the Earl and Countess of Mar and Kellie, all of whom were on the Canadian Pacific steamship Montroyal; James Oliver Curwood on the Empress of Scotland and Baroness Grey on the Montclair, of the same line.

Calgary, Alberta. — The No. 4 (Imperial) well (Imperial), continues to amaze geologists. Its output production increased July to 648,136 gallons, 78 degrees Beaume, an increase of 28 barrels daily over the June production. The production continues to increase and the flow of gas at 20,000,000 cubic feet a day is being maintained. This flow will shortly be harnessed to supply Calgary.

Preparations are under way for the holding of the 15th annual convention of the American Association of Railroad Superintendents. J. E. Savage, General Superintendent, Canadian Pacific, was elected chairman of the arrangements committee, and plans were made for the organization of a complete committee to go ahead with the business of making the convention a success.

A despatch from London states that in the past three weeks more than 20,000 boxes of Quebec-made cheese have arrived and been sold in London at good prices, the quality, it is said, being of the best. It is pointed out that if Quebec products are to obtain the position they deserve here it is necessary to keep continuous supplies coming, in order to make them known to the general public, rather than to make either isolated or occasional speculative shipments. Along this line, some 7,000 boxes of Quebec-made cheese went forward from here to the London market during the past week.

Business Training is a Necessity

Attend the Guelph Business College

Grammar, English, Individual Instruction by Business Experienced Instructors Start on Monday

A. L. BOECK, Principal and Proprietor Phone 1145

LADIES!! Blue Bird Beauty Parlors

upstairs over Mr. Dale's Office Marcelling, Curling, Cutting and Singing

We solicit the patronage of the ladies of Georgetown and vicinity. Miss Francis Phone 591

1925 TAXES



NOTICE

The 1925 Tax Notices having been sent out the First Instalment is due and payable on

September 23, 24 & 25

I will be at the new waterworks building on the above dates prepared to receive taxes.

E. McCANNAH, Collector

Important to Tax Payers—By law "A" which came into force last year gives the Collector no option in connection with penalty if taxes are not paid on dates indicated in notice.

Herbalist Here

Are You Suffering From Any Disease?

Mr. Merz, the Proprietor of the Canadian Herb Gardens, and Expert in Herbs, will be at the

Hotel McGibbon, Georgetown

For One Day Only

Thursday, Sept. 24th

All Day and Evening

CONSULTATION FREE!

Nervous Diseases, Rheumatism, Bladder Troubles, Diabetes, Bright's Disease, Stomach, Liver, Kidney, Neuritis, Neuralgia, Blood Pressure, Heart Troubles, Constipation, and All Diseases.

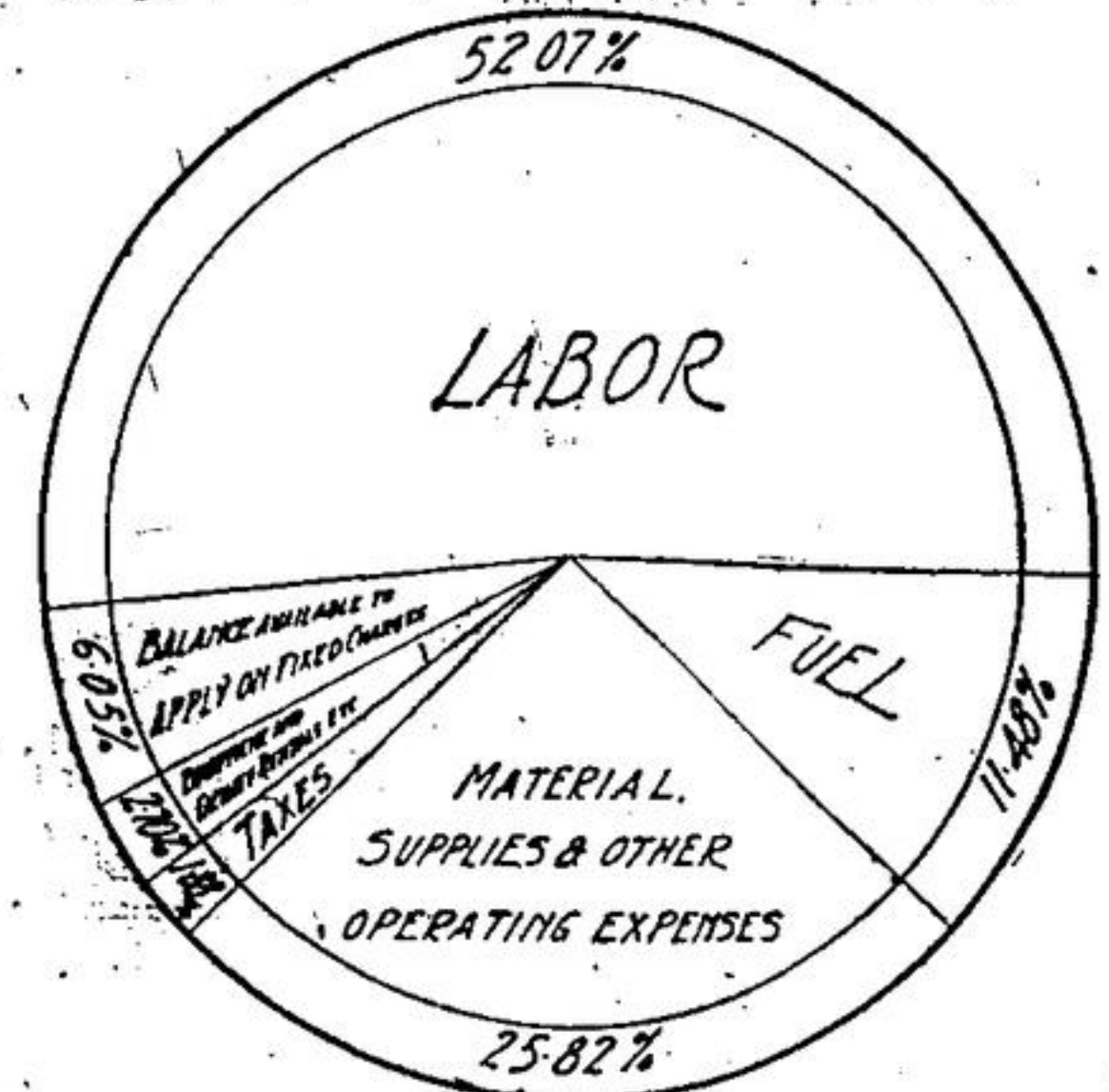
There is An Herb For Every Disease

Remember the Date—Thursday, Sept. 24

W. W. ROE

Insurance Broker Insurance in all Branches PHONE 65 - GEORGETOWN

How the C.N.R. 1924 Dollar Was Spent



The full circle shown above represents the gross income dollar of the Canadian National Railways in 1924. The circle is divided into a number of segments each of which represents the proportion into which the dollar was broken up for expenditure in the directions named.

Table showing the total amount spent on these items in dollars and cents as follows: Labor \$127,216,017.40; Fuel 28,058,471.86; Materials, Supplies and other operating expenses 63,069,441.81; Taxes 4,588,593.56; Equipment and facility rentals, etc. 6,600,561.00; Balance available to apply on fixed charges 14,772,327.92; TOTAL \$244,305,413.55

This chart is interesting in that it is a guide to the part which the dollar of the Canadian National Railways plays in the business of the country as a whole. It is not an idle dollar. Nearly all of it passes in circulation and finds its way into every channel of industry and commerce. As can be seen, wages paid to employees constitute, by far, the greater portion of expenditures. There are almost 100,000 employees who get their share of the company's revenues twice a month, and this money, therefore, circulates from one end of Canada to the other. None of it remains unproductive, but aids directly in the stimulation of trade and commerce in every centre where the distribution takes place. The greater part of it, in fact, is immediately absorbed into the channels of trade, but a considerable portion goes into savings banks, building and loan associations, and other forms of investment. There are communities that are almost solely dependent upon the money which the System distributes in this way. No enterprise in Canada is such a large purchaser of supplies as the Canadian National Railways. Wherever it is possible to do so, these supplies are purchased in Canada from products manufactured by the Canadian workman or grown or mined in Canadian territory. The stores rooms of the company resemble a well-stocked department store. They contain thousands of separate items from slacks bands to pine drives. The dining car commissariat is a steady customer of the Canadian farmer and fisherman. The enterprise is one that is intimately associated with every phase of industrial activity in the Dominion from the publisher of a newspaper to the builder of locomotives. The purchases of the Canadian National Railways stimulate every branch of commerce and industry and their services provide an adequate and dependable agency for the transportation of people and their goods from place to place.

Here is the Summer Home of Mister Jack Frost Himself

This is the Ice Cave in Mount Sir Donald, near Glacier, B.C. The light of the sun streams in through the opening at the far end causing the frozen walls to glister as though with a thousand times ten thousand diamonds. It is rumored that this is the official summer residence of Jack Frost himself, to which the Chilly Monarch retires for his annual nap from spring time to autumn.



And this is a scene from Mr. Frost's private grounds, on the roof of the world in the Canadian Pacific Rockies. It is here, so we understand, that Mr. Frost spends most of his time when not asleep in his Cave. For a pastime he enjoys most of all riding around in chunks of floating ice and his favourite food is a good, deep crackle glacier which he prefers coated with a generous frosting of newly fallen snow. When winter comes and the nights are long and dreary he lets out a wild whoop of joy (so we are told), jumps on a passing snow cloud and sails away over the continent, pushing down mercuries and heaping up snow drifts wherever he goes. But after all, nobody takes him very seriously these days, for it would be a tiresome old world to live in if Friend Frost didn't come along once in a while and give us something to contrast with the summer.

AUCTION SALE!

Farm Stock, Implements, Etc.

The undersigned has been instructed by Mr. Isaac Winter

To sell by public auction at Lot 1, Centre Road, Toronto Township, on

Thursday, Sept. 24th

1925, at one o'clock sharp the following:

Horses—Bay horse, 8 yrs., weight 1,500; bay horse, 8 yrs., good driver, and work, good in every way; Clydesdale mare, 9 yrs.; grey aged mare, good worker, heavy pulling, rising 3 years, heavy fly comb, 2 years. These colts are a good matched team.

Cows—Durham heifer, fresh 1st of Aug., 2 years, a splendid heifer; Black Jersey, 4 yrs., due Oct. 12; white cow, past Jersey, due Oct. 3; grey Jersey, 8 yrs., due Oct. 13; Jersey, 6 yrs., due Feb. 24; milking big Ayrshire, 7 yrs., due Dec. 30; milking big Jersey, 8 yrs., due Oct. 1st; red Durham, 6 yrs., due Nov. 20; Holstein, 6 yrs., due May 7th; Jersey, 5 yrs., due Mar. 25; milking well; Holstein cow, big milk, due April 22; freshened in Aug.; Jersey, 3 yrs., due April 28, in full flow.

Implement—Peter Hamilton binder; Massey Harris hay loader, neatly new; Massey Harris mower, new; International side delivery rake good as new; Peter Hamilton mower; Peter Hamilton horse rake; P. Hamilton spring tooth cultivator; roller; Massey Harris dig, No. 12; Fluffy plow, No. 2; Williams plow; double harrow; Red Kangaroo; Cockshott rising plow, single furrow; set of 3 piece harrows, set of 4 piece harrows, and puller; P. Hamilton ditcher, harrow cart, set Jackson trucks, and other trucks, hay rack, 14 ft.; set springs, set heavy sleigh one horse sleigh, set pleasure sleighs, 3 sets, new; bag truck, set of scales, 2, 100 lbs., fanning mill, number of bags, forks, shovels, wagon jack, stock rack, several water barrels, pig crate, emery stone, iron kettle, log chains, 4 sets double-tree, harrow cart, Sharpley separator, P. Hamilton dig, 3 neckyokes, rubber tired buggy, lot of tools, quantity household effects.

GRAIN—About 1200 lbs. Oats. HARNESS—Set breeching harness, set chain harness, set long tug harness, 3 sets single harness, 6 horse collars, 1 collar 22 inch.

HENS—14 hens, 2 galvanized hen coops. All must be sold as the farm has been rented.

TERMS—Grain, fowl, and all sums of \$10 and under cash; over that amount 11 months credit on approved joint notes.

W. A. RUSSELL, Auctioneer.

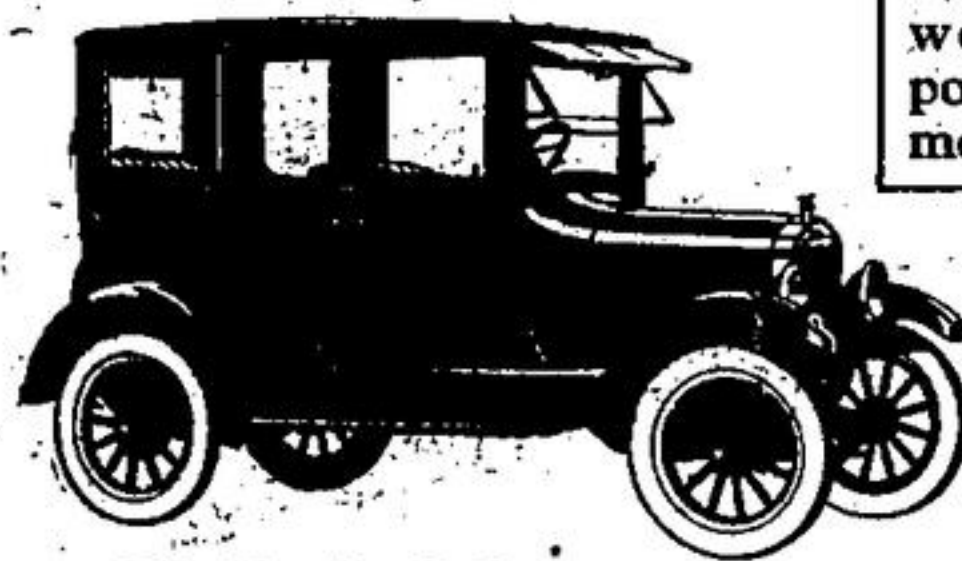
Wood

Hardwood, cut any length you require, \$14 a cord, 50 a load, \$5.50 a single cord. Fir, spruce, hemlock, \$5.00 a cord. A free load of kindling with every three cord order. Murray Bros. Phone 59 r 15

Maintaining Ford Leadership

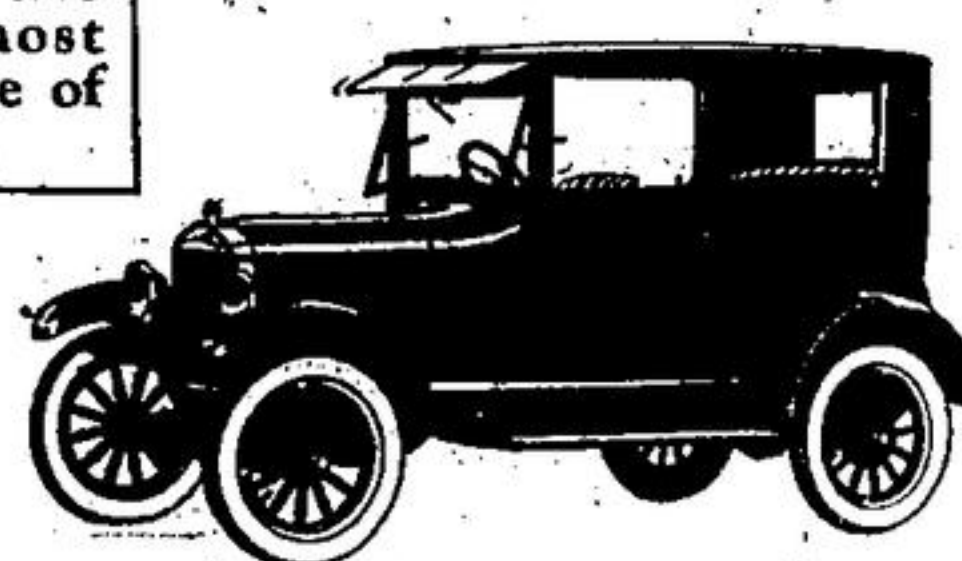
—Highest Quality at Lowest Cost

Introducing many improvements in the world's most popular line of motor cars.



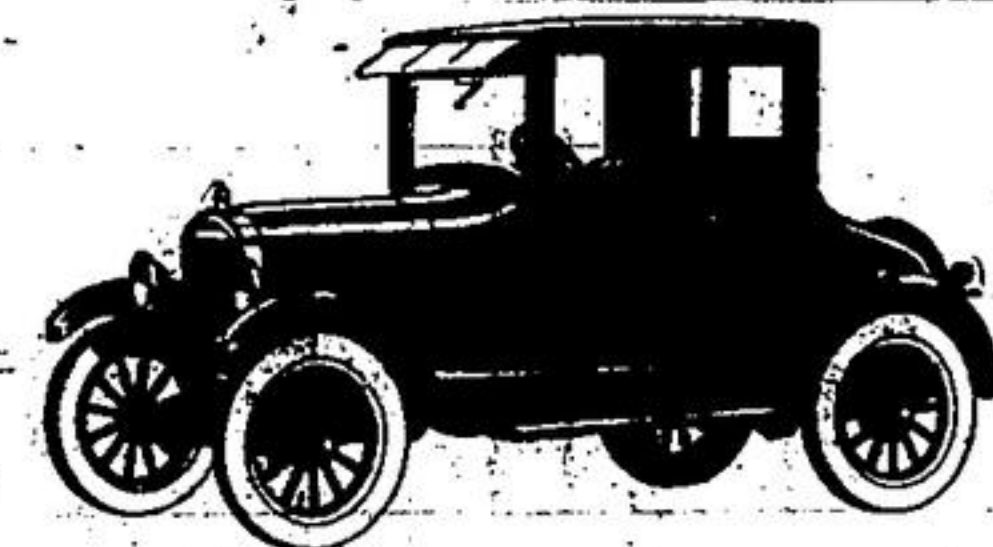
The Fordor Sedan

Color—Gray with black enamel running gear. Composite body. Nicked radiator shell and hooding ribs. Leather-clad top, view, closed at both ends. Standard equipment includes starter, cord tire, demountable rims, windshield wiper, rear view mirror and dash lamp.



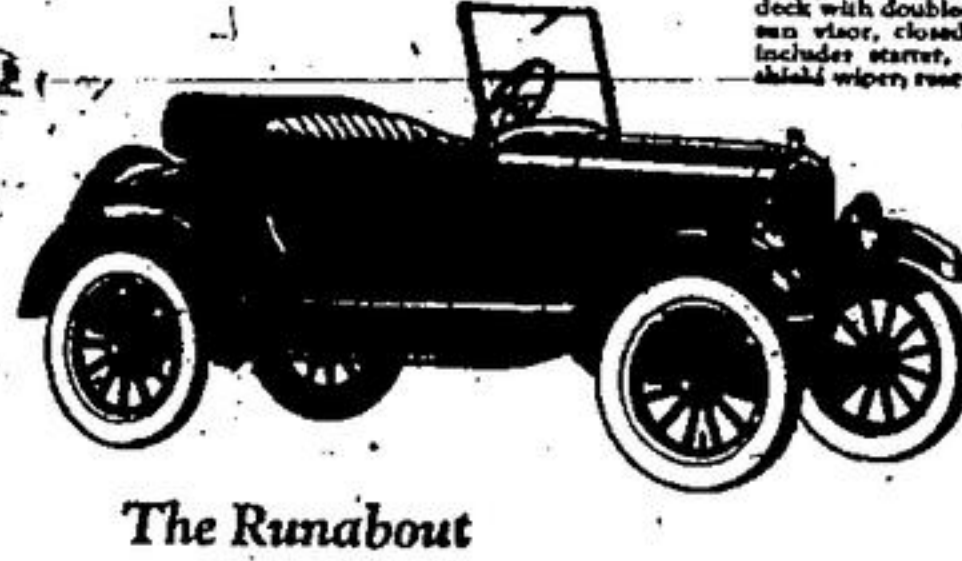
The Tudor Sedan

Color—Dark blue with black enamel running gear. All steel body. Nicked radiator shell and hooding ribs. Lower seats both front seats tilting. One-piece vinyl deck with doubled compartment capacity. Leather-clad top, view, closed at both ends. Standard equipment includes starter, cord tire, demountable rims, windshield wiper, rear view mirror and dash lamp.



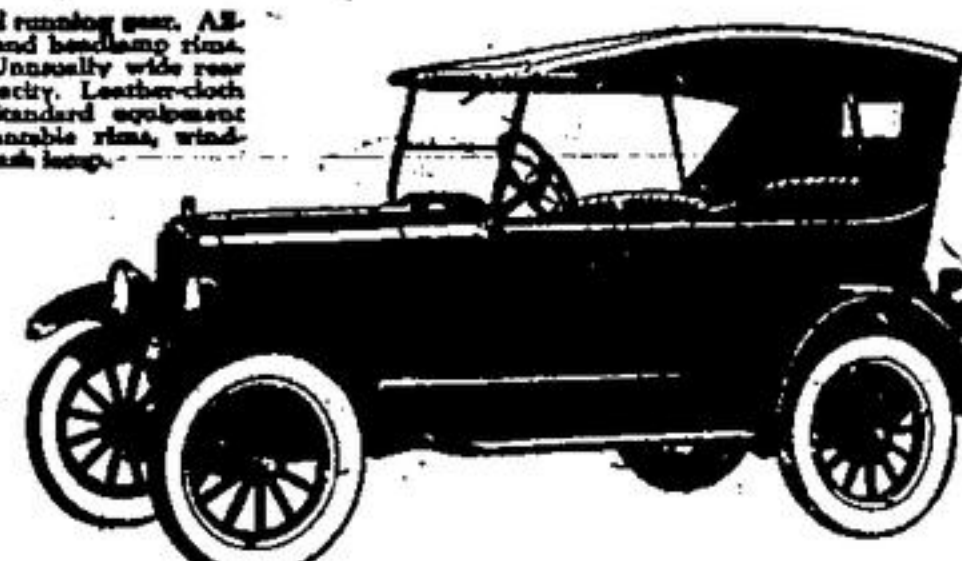
The Coupe

Color—Dark blue with black enamel running gear. All steel body. Nicked radiator shell and hooding ribs. One-piece vinyl deck with doubled compartment capacity. Leather-clad top, view, closed at both ends. Standard equipment includes starter, cord tire, demountable rims, windshield wiper, rear view mirror and dash lamp.



The Runabout

Color—Black. All-steel body. Double ventilating windshield. Ford leather-clad one-man top. Tool box under front seat. Standard equipment includes starter, cord tire, demountable rims, windshield wiper and nickered hooding ribs.



The Touring

Color—Black. All-steel body of streamline design. Double ventilating windshield. Ford leather-clad one-man top. Tool box under front seat. Standard equipment includes starter, cord tire, demountable rims, windshield wiper and nickered hooding ribs.



CARS TRUCKS TRACTORS MADE IN CANADA