

JUST AS THE SUN WENT DOWN

After the dim of the battle's roar
Just at the close of day
Wounded and bleeding upon the field,
Two young soldiers lay,
One had a mortal of thin grey hair,
One had a lock of brown,
Bidding each other a last farewell,
Just as the sun went down,
One thought of mother at home alone,
Faded, old and grey,
One of the sweetest heart he felt in town,
Happy and young and gay,
One kissed a lock of thin grey hair,
One kissed a lock of brown,
Bidding farewell to the Union Jack,
Just as the sun went down,
One knew the joy of a mother's love,
One of a sweetheart fair,
Thinking of home they lay side by side,
Breathing farewell prayers,
One for his mother old and grey,
One for his love in town,
They closed their eyes to the earth and skies,
Just as the sun went down.

And the Flea

"Children" said the Sunday school teacher, "this picture illustrates to day's lesson. Lot was warned to take his wife and daughters and flee out of Sodom. Here are Lot and his daughters, with his wife just behind them, and there is Sodom in the background. Now has any girl or boy a question before we take up the study of the lesson? Well, Susie? 'Pleathe, this," lisped the youngest in the class "where is the flea?"

J. A. TRACY
Clerk Township of Esquimaux,
Clerk of Division Court,
The leading Fire and Life Insurance
Company's representative,
Investor, Mortgage Licenses,
Newmarket, Ont.

COAL AND Wood
on hand all the time
BEST SCRANTON COAL
Cement on hand
John Ballantine
GEORGETOWN

In The Public Eye

By O. T. WALKER



WE WILL POINT OUT THE TROUBLE
Most Eye Trouble is the direct result of over-exposure. When the first signs of eye strain appear a Registered Optician should be consulted. We will thoroughly examine your eyes and prescribe glasses that will give you comfort and ease. Our moderate charge is equal to the value of the strength of, and the amount of, the lenses. Also the value of the mounting you choose. A Registered Optician is an eye specialist who has proven his competency by government examination to carry for you.

O. T. WALKER, R. O.
Registered Optician & Optician
Phone 338 for appointment.
BRAMPTON
MAIN ST.

No Shovelling Required
STANDARD ANTHRACITE SCRANTON COAL
In all Sizes
Automatically Screened and Loaded.

Coal Wood
Select Lump for Domestic and Threshing purposes.
Smithing and Canal Coal. In fact I carry everything to be found in an up-to-date Coal and Wood Yard.

John McDonald
Georgetown
PHONE 12

GRAND TRUNK RAILWAY SYSTEM

The Double Track Route
BETWEEN
MONTREAL TORONTO, DETROIT and CHICAGO
Unexcelled Dining Car Service

Sleeping cars on night trains and Parlor Cars on Principal Day Trains.
Full information from any Grand Trunk Ticket Agent or C.E. Hornig, District Passenger Agent, Toronto.
T.J. Cameron, Agent, Georgetown
PHONE 70

At your Service
H. C. Bailey
ELECTRICIAN

Headquarters for Mazda Lamps, Fixtures, Shades, etc. Call at the Harness Shop and let me give you a price on your electric work.
Satisfaction Guaranteed
PHONE 232 — GEORGETOWN

SHOE Repairing

For Sewon Work and High Grade Repairs, this is the only shop in town fully equipped, including Sitcher, which will sew on from twenty to thirty pairs of soles per hour, from a single sole to a thickness of 3/4 of an inch and positively guaranteed. I buy the very best No. 1 Custom stock and cater to high grade and fine shoe trade. I don't sell shoes, so it will pay you to have your repairs done at a shop of this kind. There's a reason. Having followed the shoe game since 1895 I understand what I know about it.

J.A. Ballantine
Repair Factory Garage of King and Queen Sts., near G.T. R. Station.
Hours 8 a.m. to 6:10 daily,
7 p.m. Saturday.
Work called for and delivered. Cash system. Box 546. Phone 2566.

Wall Paper!
Wall Paper!

I can supply all your needs in Wall Paper. Our 1922 samples are up-to-date in all details. Prices within everyone's reach.
Estimates given on Paper Hanging, Painting, Graining, etc.

E. BLUDD
Box 109 Glenwilliam
Bell Telephone 5 ring 5.

Soldier Settlement and Irrigation



Irrigation is coming into its own in Western Canada. Pioneers of the older provinces began with an axe and an ad team and were skeptical of the farmers becoming their own masters. Now the irrigated districts such as the Okanagan Valley, British Columbia, set long since a precedent, and the value of the water is being demonstrated. A large acreage that is now being won from nature is the soldiers' settlement land in the Southern Okanagan — a 2,200 acre tract that is of national interest because of its strategic location and the engineering skill required to make it of service to the soldier settlers. A motor trip through the settlement revealed a country rich in scenic beauty, interesting in old land marks and marvellous in present activity of transforming a wilderness into a garden. It lies in a lovely valley, extending from Vaseaux Lake to the International Boundary. The northerly part of the settlement is 22 miles from Penticton.

Water for the irrigation is supplied from the Okanagan river which, at point of diversion, is about three-quarters of a mile below Vaseaux Lake and has a width of 200 feet. A concrete dam raises the surface of the water 8 feet. The dam is a concrete structure with a permanent way with concrete lined ditches which prevent seepage losses, concentration of mineral salts and water logging. The canal is 18 feet wide on top, five and a half feet deep and capacious enough to run a boat with a flow of 178 cubic feet per second. Eleven miles of the project is finished, 8 miles partly done and when finished, 22 miles of canal will be built to the Boundary. Even the varying disposition of the topography, many engineering problems and difficulties arose—problems that were unique in engineering in America. Various experiments had to be resorted to which included the use of great wood stave pipes and riveted steel pipes, some 80 inches in diameter.

As an example of the immensity of the task as well as of the engineering skill required in the construction of thirteen miles of the canal, the intake to the cement pipe works. There will be about 1,200 acres of water to be diverted and the land is being developed under the most favorable conditions with a ample supply of water.

A plant for the manufacture of concrete pipes is one of the extensive industries of the settlement. Twelve miles of pipe will be built this season by 26 men, with an output of 650 feet of piping a day. A portion of the land was put on sale last spring and about 600 acres sold. The first orchard was planted by Perry Simons, a returned soldier, belonging to the construction camp.

The town of Oliver will be the administrative centre of the district. It is one of the few planned towns in Canada and is not being developed in a haphazard way with speculation in sub-divisions. The Government have placed on the market just what is needed, and this will be sold off before further land is open for sale. There are areas for a park, for a city hall, for a school, for various public buildings and space for all that is required for an up-to-date town.

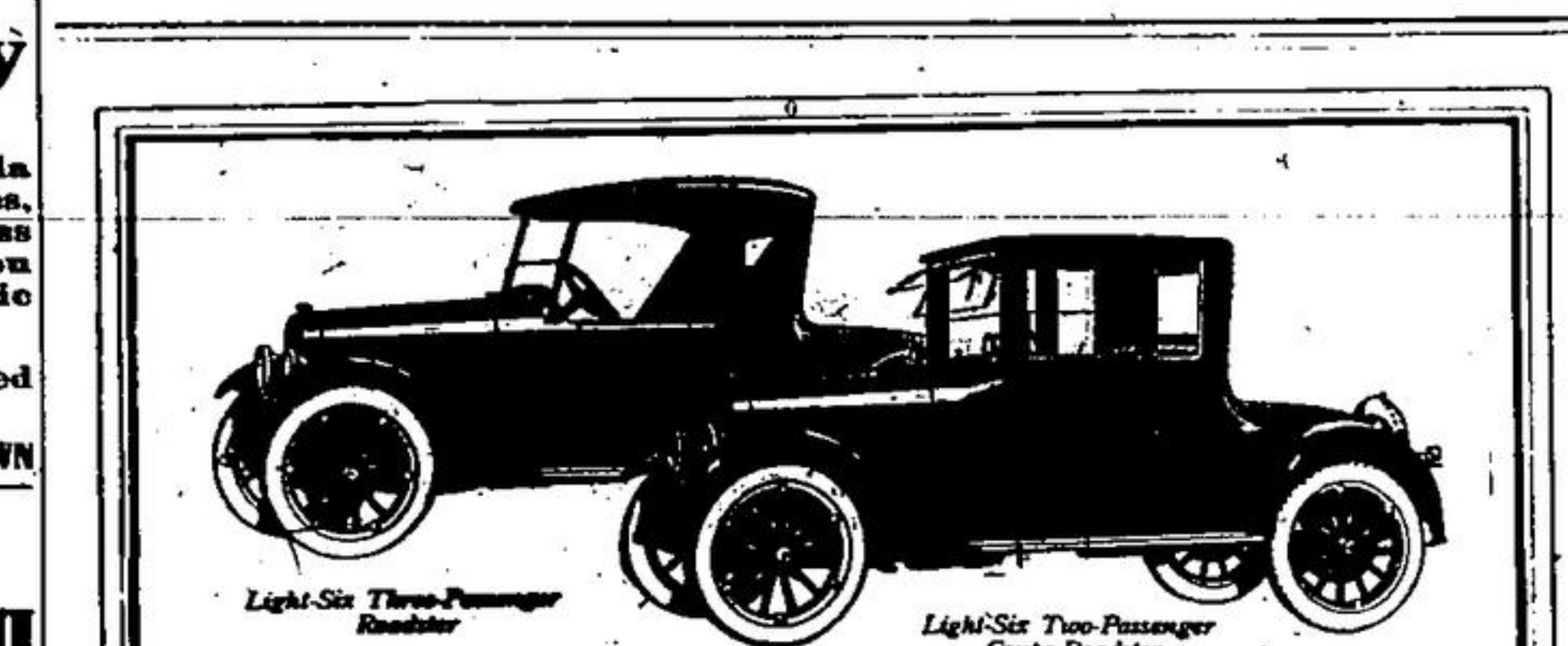
The Oliver recreation grounds are across the river from the town, the present site of the big irrigation construction camp. The young men built a permanent recreation hall after being supplied with lumber and various requirements by the Government. An athletic association was formed and now the hall, a fine structure, 60 by 70 feet, serves the fast growing community as a centre for concerts, dances, basketball and general sport.

A demonstration plot has been established about five miles south of Oliver, on the main highway where 24 acres are now under cultivation with six acres in young trees which will be sold to the soldier settlers.

Leaving Penticton, on our trip to Oliver, each interest beckoned to a fresh delight. Winding in among the hills, we sped around Dog Lake, a steamer "fort" on the shore, will be used by the Kettle Valley Railway, from Penticton to join with rail service at Okanagan Falls on the way to Oliver and the Boundary. Passing Vaseaux Lake, through the stock raising country, there was a wealth of beautiful scenery—the water lilies on the lake, the wild geese who make their home there all the year around, the overhanging rock on the motor road, all added to the beauty of the scene.

A point of interest was the big construction camp where we had dinner at the headquarters and dining room. It is a regular settlement with even the hen and her little chickens a part of the scene. 311 men of the camp make their home there and it will be the place of the camp for the next two years. For the workmen there is an immense dining tent and 160 men are served at once.—C. G.

Minstrels Thurs. & Friday



Studebaker
Ideal for Two or Three

Studebaker builds two attractive roadsters, each mounted on the sturdy 46-horsepower LIGHT-SIX Chassis. Both cars are ideally suited to the requirements of the professional or business man, or the small family.

The open Roadster seats three adults in perfect comfort, with ample room for complete relaxation. The lines of the top harmonize with the graceful body. The wide doors with outside and inside door handles, permit easy entrance and exit. There is ample luggage space under rear deck.

For a convenient, light, easily operated car of great economy, there is no other three-passenger SIX on the market at or anywhere near its price.

The Coupe-Roadster, like the open roadster, is built complete by Studebaker. It is one of the most attractive enclosed cars of the year and, at its price, has no competition. In materials and workmanship it measures up to the highest standards of the industry. Seats two passengers with plenty of leg room.

Interior is upholstered in genuine leather. Windows are raised and lowered by simple automatic device. Equipment includes cowl ventilator, side coach lamps, thief-proof transmission lock, windshield wiper and clock.

You cannot obtain greater intrinsic values at any price.

J. N. O'Neill & Son
Georgetown Ontario
This is a Studebaker Year

Light-Six	
5-Pass, 117" W. B., 40-H. P.	
Chassis	\$1250
Touring	1495
Roadster (2-Pass.)	1495
Coupe-Roadster (2-Pass.)	1925
Sedan	2425
Special-Six	
5-Pass, 117" W. B., 50-H. P.	
Chassis	\$1700
Roadster (2-Pass.)	2025
Roadster (4-Pass.)	2075
Coupe (4-Pass.)	3050
Sedan	3250
Big-Six	
7-Pass, 126" W. B., 60-H. P.	
Chassis	\$2175
Touring	2475
Coupe (4-Pass.)	3500
Sedan	3700
Price f.o.b. Walkerville, Ont.	

The National Way TO WESTERN CANADA
THE NEW ROUTE
WINNIPEG SASKATOON PRINCE RUPERT
BRANDON CALGARY VANCOUVER
REGINA EDMONTON VICTORIA
AND ALL WESTERN POINTS
CHOICE OF ROUTES.
Leave Toronto 8:45 p.m. daily. Standard Sleeping car Toronto to Winnipeg via North Bay and Cochrane. Through Tourist Sleeping car Toronto to Winnipeg on Tuesdays, Thursdays, Saturdays and Sundays.
Leave Toronto 10:35 p.m. "The National" Mondays, Wednesdays and Fridays via Sudbury and Port Arthur. Solid through train with Standard and Tourist Sleeping cars, Coaches, Colonist car and Dining Car Service. Connection at Winnipeg for all points West.

Get full particulars, reservations, etc., from nearest agent, Canadian National Grand Trunk Railways or C. Cowles, agent, Toronto Suburban Railway, Georgetown, Ont.

Eases Kitchen Work
To Women Who Do Their Own Work: Suppose you could save six minutes every day in washing pots and pans—two minutes after every meal. In a month, this would amount to a saving of three hours of this disagreeable but necessary work. This saving can be made by using SMP enameled kitchen utensils, as their smooth sanitary surface will not absorb dirt or grease. No scraping, scouring or polishing is needed when you use Diamond or Pearl Ware. Soap, water and a dish level is all you need. Ask for
SMP Diamond WARE
Diamond Ware is a three-coated enameled steel, the blue and white outside with a smooth white lining. Pearl Ware is enameled steel with two coats of pearly grey enamel, inside and out.
THE SHEET METAL PRODUCTS CO. OF Canada
MONTREAL, TORONTO, WINNIPEG, LONDON, VANCOUVER, CALGARY
At Every Hardware Store

"There Goes the Last Train!"
Long Distance to the Rescue
"What shall we do, George? There goes the last train, and the children will be alone all night. We simply can't have that; Betty is such a nervous child, and Bobby's always hunting for matches to make Indian bonfires with. It's dreadful."
"Well, Mary, you can't get home to-night. That's all there is to it."
"But we must do something. They may set the house on fire."
"Listen! Here's the drug-store. We'll call up Annie by Long Distance and ask her to go over and stay with the children."
"Oh, what a relief!"
Simple isn't it? Long Distance is the friend in need, always at hand, always ready to put you in touch with family, friends and business.
Every Bell Telephone is a Long Distance Station

Livingstone's Bakery
MAIN STREET
No. 1 A BREAD
ALL KINDS
Currant Brown Milk
Home-Made White
Saturday Special!
CHELSEY BUNS
Plain Buns and Bread Rolls every day; also PIES
A. LIVINGSTONE & SON
Phone 55 Georgetown

The Razor
That Sharpens its Own Blades
\$1.00
The Biggest Razor Value ever Offered to the Public
Model C Valet AutoStrop Razor
Model C Valet AutoStrop Razor consists of a highly polished nickel plated, self-stropping razor, three genuine Valet AutoStrop blades and one selected strap. Razor and blades are contained in an attractive metal case. All contained in a lithographed carton—complete for \$1.00.

Model C, Valet Auto Strop Razor
R. H. THOMPSON & CO'Y
NORVAL FLOUR MILLS
SEEDS
Red Clover, Alfalfa, Alsike and Timothy Seed Oats and Barley
W. J. CAMPBELL LIMITED
NORVAL, ONTARIO

During Paint Up and Clean Up Season And All the Year Around
WHEN YOU WANT TO
FIX THAT FENCE LAY THAT FLOOR HANG THAT DOOR
S. D. L. Somerville
General Carpenter
Mala 134
Building or Cottage Market St., Georgetown or Any Big Carpenter Job

Easter Gifts!
The Very Newest in Jewelry
Bar Pins, Brooches and Rings
Dainty Bracelet Watches in Silver Gold Filled and 14 k Gold
For the Young Ladies—
The Barrette Pin, set with different colored stones, also Gold and Colored Stone Beads. These are very popular just now.
Ideal Silver Cream for cleaning your Silver. Try a bottle. We recommend it.
A. B. WILLSON
MAIN STREET, Next McGibbon Hotel