

Rockwood fashion show first breath of spring



JOHN CLARK models what the well-dressed man will wear for a large audience at the fashion show sponsored by Rockwood Home and School. Ray Death also modeled male fashions from Zeller's of Guelph.—(Staff Photo)

The first breath of Spring illuminated the auditorium of Rockwood Centennial School last Tuesday evening as Zeller's of Guelph presented a fashion show under the auspices of the Rockwood Home and School Association.

Mrs. Chris Fechner from Zeller's fashion oval supplied commentary of the colorful presentation, using models from Rockwood and area.

Models appeared on stage under an arbor, festooned with flowers simulating a garden scene. Then they descended the steps and proceeded along a carpeted aisle to a dais where the audience had an opportunity to inspect the Spring family fashions at close range.

The auditorium of the school was almost full for the show which featured fashions for all ages. A new wrinkle was the appearance of men and boys with a full range of male fashions which the audience accepted with approving comments.

Make-up was supplied by Marlene Buczek.

During intermission the audience was treated to accordion solos by Nancy Meek entitled "The Sparrow" and "Edelweiss". A trio composed of June Thomson, Ellen Thomson and Eleanor Rowan sang the "Rich Man's Spiritual" and "Easter Parade" accompanied on the piano by Brenda Smith.



CHRIS FECHNER, Zeller's commentator from the store's fashion oval, kept the audience at Rockwood school up to date on family fashion trends.—(Staff Photo)

Children who modelled fashions were Alison Brace, Anita Brace, Beth Clark, Paul Clark, John Clark Jr., Lynne Duncan, Jeff Harris, Robbie Meadows, Julie Anne Sargent, Susan Toth.

Teenagers who modelled were: Cathy Osborne, Jo Anne Laverty, Brenda Ingle and Ken Malby.

Ladies who modelled were Beatrice Brace, Marilyn Brace, Anne Benham, Betty Lou Clark, Jessie Gellatly, Kay Stevenson, Donna Brown and Debbie Chandler.

Men models were John Clark and Ray Death.

Family fashions were modelled by the Clark family, Beth, Paul, John Jr., Betty Lou and John Sr.

Three generations, another new wrinkle, was made up of the Brace family: Beatrice, Marilyn and Alison.

Alison and Anita Brace were the big and little sister.

Gail Nichol won the first door prize, a flower arrangement created by Jack Rol of Caroline Nursery. A potted mum, also donated by Caroline Nursery, was won by Shelley Allsop.

Kevin Nichol won a gift donated by Marlene Buczek and Barbara Kingscote took a gift home donated by Margaret Taylor.

The Home and School executive which sponsored the show is headed by Sandy Hudson. Joy Law was in charge of the program. Audrey Hudson and Mary Kelly looked after tickets. Music was in charge of Millie Smith.

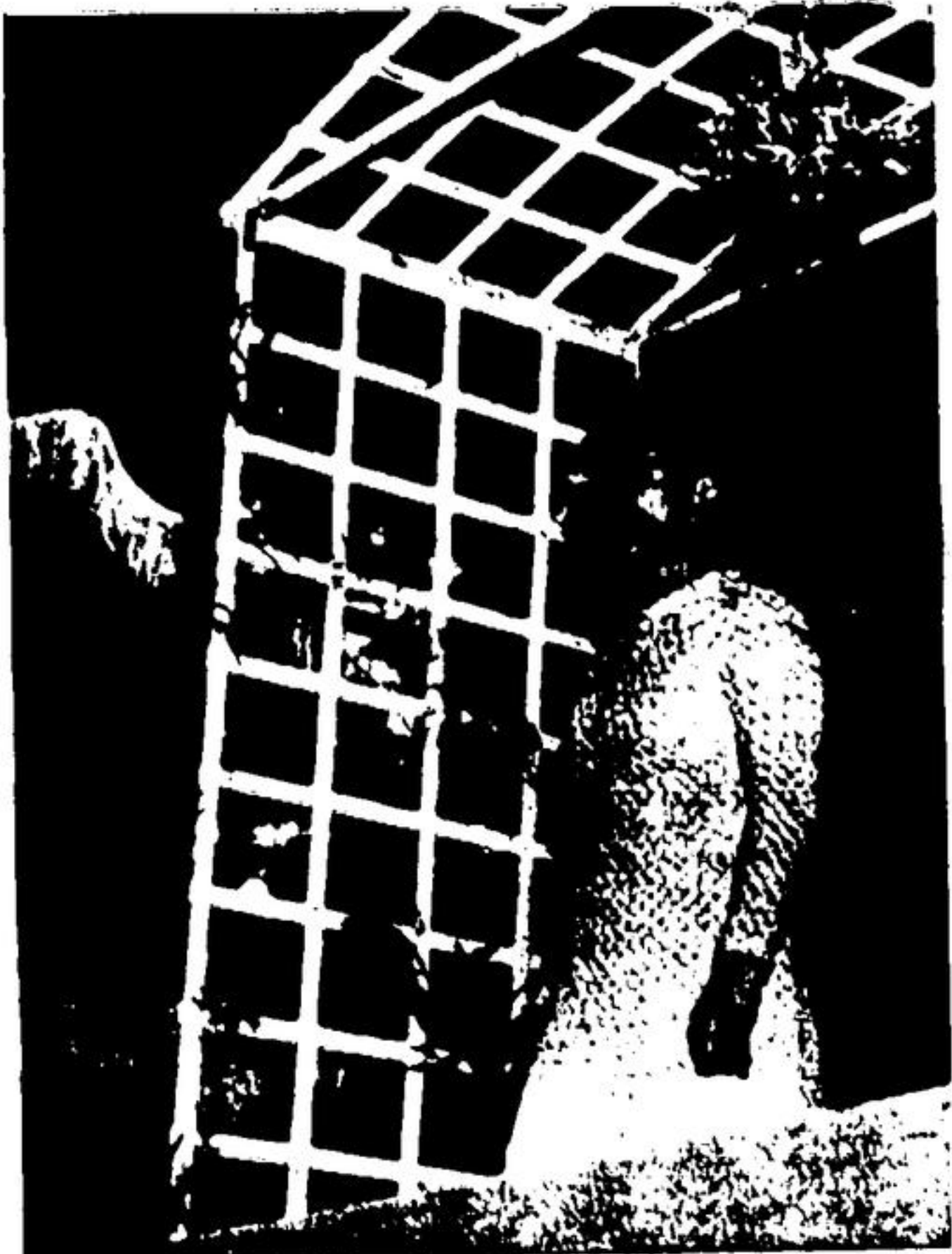
Social convener Grace Knight and Mary Kelly had charge of refreshments after the show.



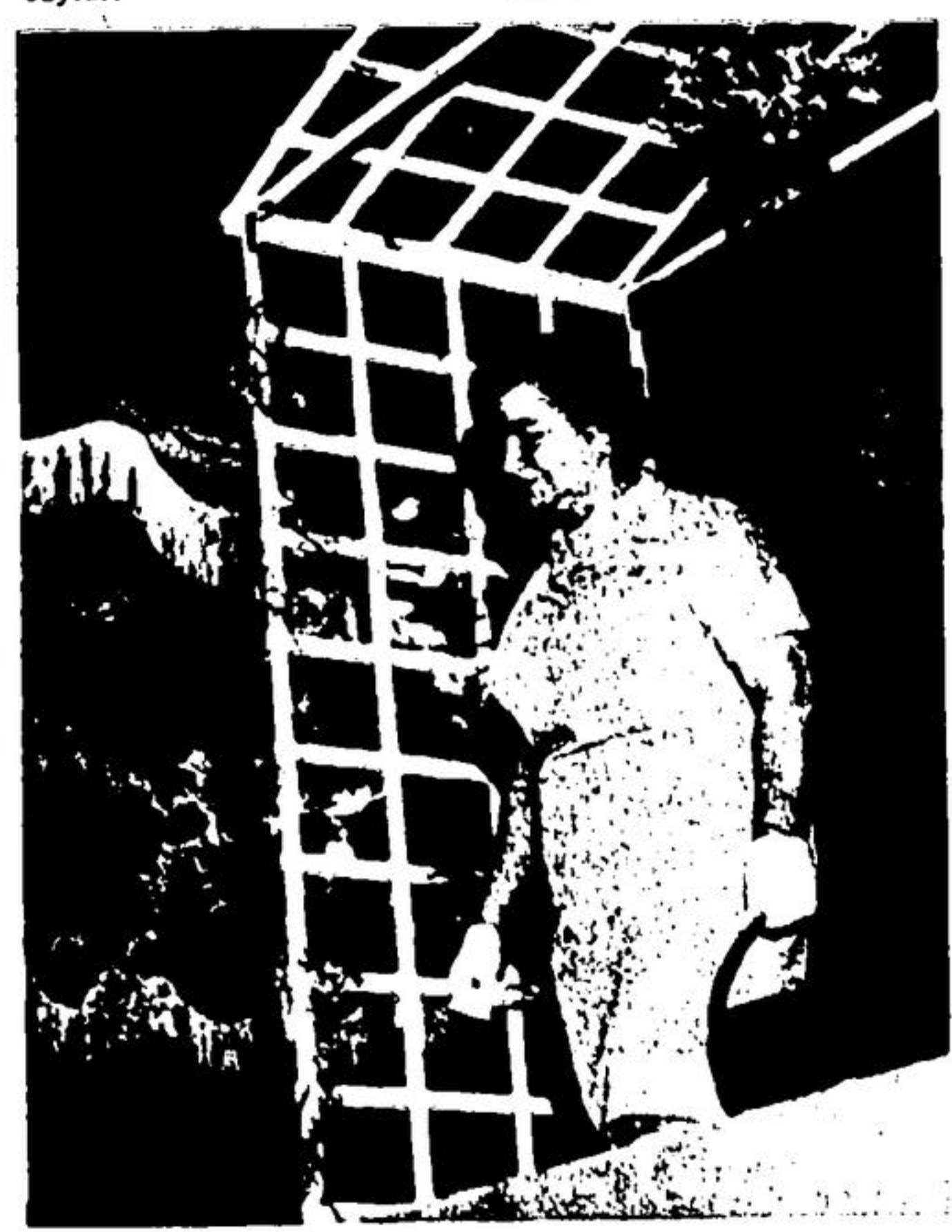
FAMILY FASHIONS modelled by the Clark family were much admired at the Rockwood H. and S. fashion show last week. Left to right are John Jr., Mrs. (Betty Lou) Clark, Beth, Mr. (John Sr.) Clark and Paul. Three generations of the Brace family also modelled family fashions.—(Staff Photo)



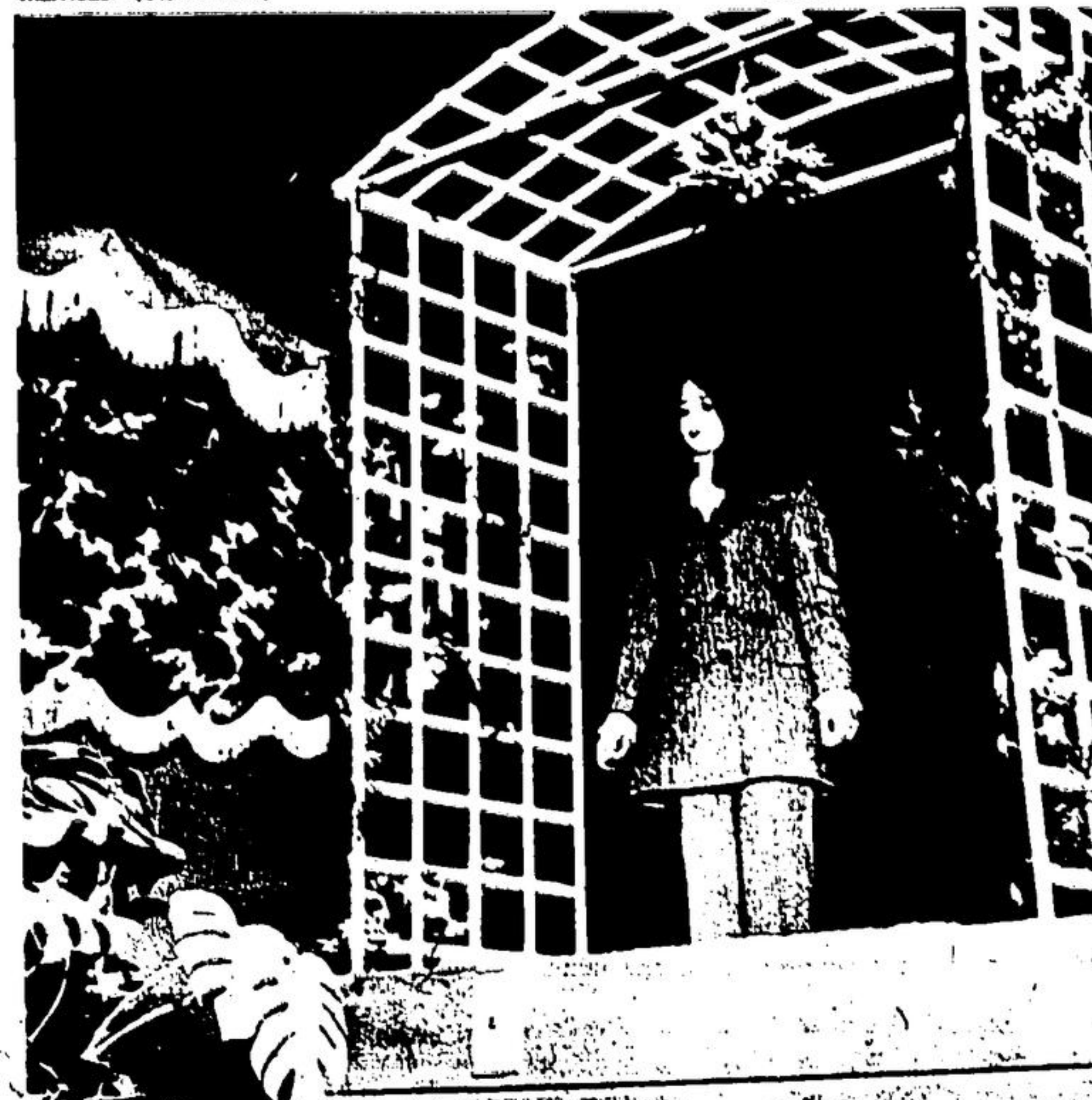
WHAT DO LITTLE GIRLS wear? Allison Brace shows Zeller's ideas on the latest family fashions.—(Staff Photo)



MARILYN BRACE makes an attractive model for a dress for young marrieds.—(Staff Photo)



MORE MATURE women's fashions were modelled by Jessie Gellatly as Zeller's showed a complete range of family fashions.—(Staff Photo)



BRENDA INGLE models a pin-stripe pant suit and later removed the coat to reveal a blouse. Models at the Rockwood Home and School Association show walked a gauntlet between an attentive audience.—(Staff Photo)

Meats

THAT MAKE THE MEAL

FROM

Lovell Bros. Modern Meat Market

— RED BRAND BEEF —

TENDER Blade and Short Rib **ROAST 79¢ lb**

CHOICE BONELESS Prime Rib Roast **99¢ lb**

LEAN Ground Chuck **69¢ lb**

TENDER Shoulder and Chuck **ROAST 69¢ lb**

Rump **ROAST 99¢ lb**

FRESH, SMALL LINK SAUSAGE **59¢ lb**

LOVELL BROS.

MODERN MEAT MARKET

77 Mill E. Acton Phone 853-2240

DAILY DELIVERY

L.O.L. euchre

Last Saturday's winners at the euchre at the L.O.L. hall, Crewsons Corners: Ladies' high, Verna Stephen; ladies' low, Mary Britton; men's high, John Dewar; men's low, Dave Swackhamer.

Door prize, John Dewar, lone hands, Mary Britton, ladies travelling, Mrs. McCristall, men's travelling, Dave Dewar.

Make the sun shine every washday with a new electric dryer. Less work, less waiting. Less ironing, too.



THE ACTON HYDRO - ELECTRIC COMMISSION
43 ALICE STREET, ACTON

your hydro

JOIN THE EASTER PARADE IN STYLE

Let us make you proud on Easter Day with a style that suits you and pleases others.

FOR AN APPOINTMENT CALL
853-1733

MARG'S BEAUTY BAR
12 MILL ST. W. — ACTON