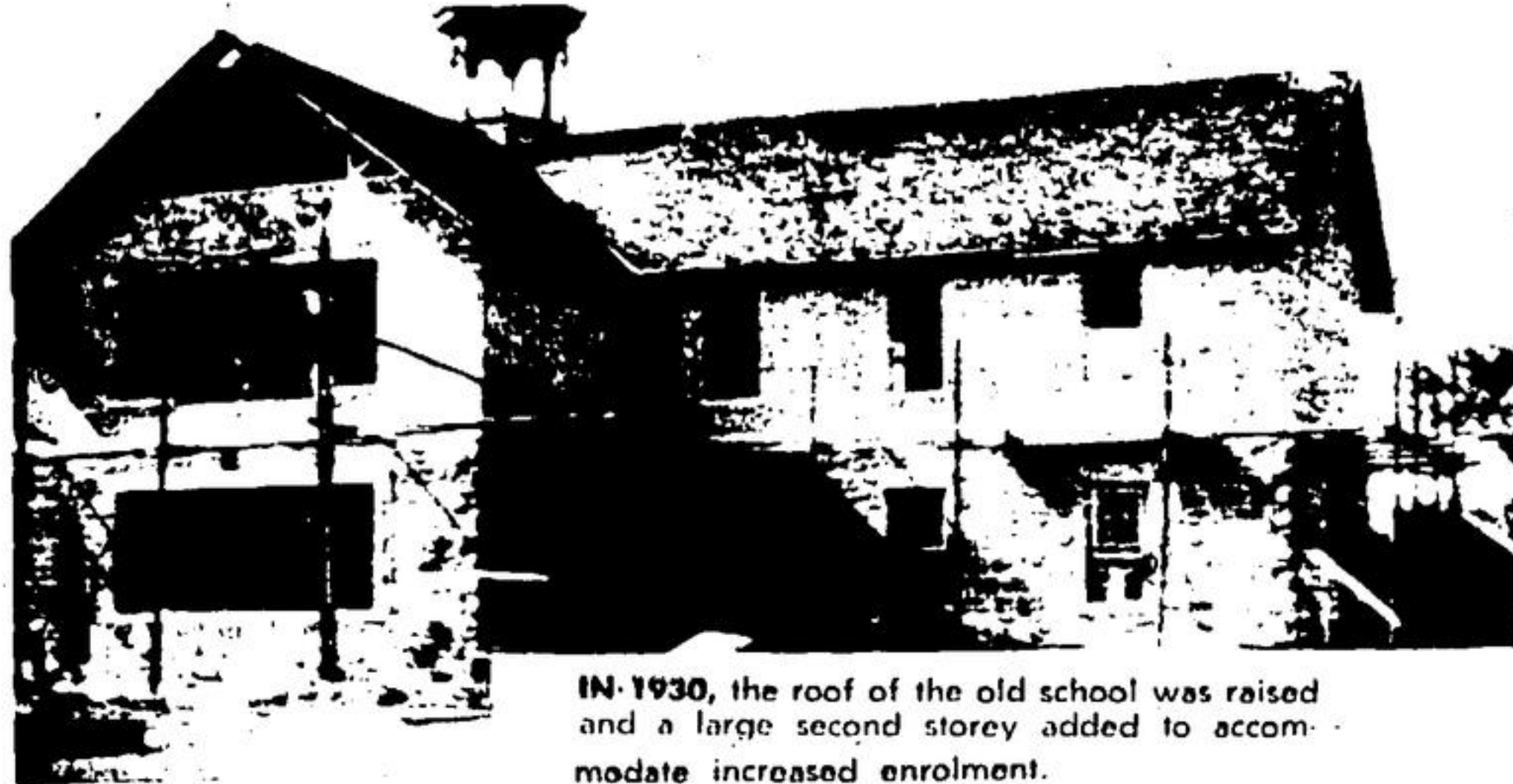


# Pictures from Rockwood's past . . .



BUILT IN 1873, the original Rockwood school's strong, sweeping lines weren't changed until 1930.



IN 1930, the roof of the old school was raised and a large second storey added to accommodate increased enrolment.



COMPLETED, the Rockwood school was a school bell striking landmark, its cupola housing the old



DEMOLITION of the Rockwood school was finished this week, leaving only new additions still in use. Ron Gidden and Bob Noble of Rockwood did the demolition work.

## Nassagawey's year-end meeting

# Erect stop signs at two corners flashing lights for four crossings

Motorists in Nassagaweya have two more stop signs to watch for as a result of by-laws passed by Township Council in the regular December meeting Tuesday.

Signs will be erected to halt southbound motorists on the First Line and Second Line as they approach the Burlington-Nassagaweya Base Line.

A request will be forwarded to the Town of Burlington asking them to place signs at the same intersections on their side of the Base Line, making it a two-way stop.

Council also approved and re-convened as a Committee Revision and made the following adjustments in the tax roll: \$54.35 rebate to F. Dudrak due to loss by fire of a house; \$54.21 to J. Houghcroft for a removed building; \$107.22 to Donald Cook for a building lost by fire; \$17.88 to A. Conaghan for loss by fire; and \$49.45 to Donald Sweet for loss by fire.

Land developer G. W. Goldstraw appeared at council to acquaint them with his plans to develop the O. K. VanSickle property in east Campbellville, and to seek clarification of some procedures necessary for rezoning and road openings.

He was referred to Nassagaweya Planning Board.

A letter of resignation as caretaker of the Haltonville War Memorial was received from Fred Edwards.

Reeve Coulter, who agreed with council Mr. Edwards has been taking very good care of the cenotaph at an almost-nominal fee, was angered when it became apparent the resignation followed a pseudonymed letter in The Champion condemning the condition of the memorial.

"Mr. Edwards has done a fine job," he said. "It's sad to think this resignation comes as a result of a nasty letter from someone who didn't even have the courtesy to sign their real name."

The resignation was accepted with regret.

Acting on advice from road superintendent G. MacMillan, council has hired three private gravel truck owners to be "on standby" throughout the winter for road sanding.

They will be paid a five dollars per day fee to keep their trucks awaiting the call of the township in emergencies, and will receive the fee retroactive to November 15 and continuing until April 15.

While sanding, they will receive wage parity with the non-retained private drivers employed in other years.

The tender of King-Seagrave Ltd. of Woodstock was the only tender offered the township during recent advertisement for a snowplade.

The blade, including accessories such as lights, will arrive shortly and cost roughly \$2,650.

Council authorized a letter to re-elected Esqueing reeve George Currie, who was last year, and will continue to be this year, chairman of a committee formed to deal with the Milton Heights water problems.

Little action has been taken by the committee since its initial meeting some months ago, and Milton Heights residents are understandably getting anxious.

Mr. Currie will be asked to call a meeting as soon as possible.

North Halton Urban Board, of which the township is not a member but has attended meetings of, sent a letter to council expressing the wish Nassagaweya would have representation at a meeting discussing waste disposal, dumps and refuse burning, particularly as it is affected by the new Ontario Air Pollution Control Act.

Since many of the problems covered at Urban Board meetings deal largely with urban situations, the township replied expressing an interest in

participating at some meetings, but taking no formal membership in the board.

Tickets were received for any two councillors wishing to attend the Halton Federation of Agriculture banquet.

Thanks and gestures of admiration were exchanged in brief addresses among council, and municipal employees were invited to the meeting to receive verbal appreciation from the Reeve.

Reeve Coulter withdraws from

the township's administration at the end of the year following an eight-year involvement in politics at the Nassagaweya and Halton County levels.

Clerk J. C. McIntyre presented him with the gavel used at meetings since the new township

office was built in 1965. Mr. Coulter is the only reeve so far to have presided in the modern facilities.

He recognized not all members of the various councils have agreed with everything he proposed; but felt any controversy was productive and did not carry over into their out-of-council personal relationships.

Mrs. MacArthur praised her fellow councillors for having always treated her as a lady, and assured the reeve her disagreements had never left the council table.

Councillor Ross Gordon, who sold his township farm during the past year and is living and employed in Guelph stated his final council meeting was the "last break with Nassagaweya."

"As long as I kept coming to council, I felt there was still a tie-in," he reminisced. "Now it's over."

## BALLINAFAD

# Family Sunday gift distribution

By Mrs. R. Shortill

Mrs. Cameron McInery has been in Georgetown Hospital the past week receiving treatment. The sudden cold snap after the few mild days caught people unawares. With no snow on the ground the cold penetrates into buildings causing worry over frozen pipes.

The funeral of Mrs. Fred W. Shortill, (Ida Robson) took place from the McClure Funeral

home on Friday with interment in Georgetown cemetery. Mrs. Shortill had been in failing health for some time. Her husband Fred, a son Floyd and a daughter Joan (Mrs. Ken Ridler) survive, as well as four granddaughters.

The 4-H Girls had a party in the Community Centre on Saturday evening.

The regular euchre was Tuesday evening in this Community Centre.

It was Family Sunday at church when adults and children attended church together after which buffet lunch was served in the basement with the Christmas tree distribution of gifts following.

Flowers were in the chancel in memory of Mrs. Shortill.

Nutmegs are less likely to break if you drop the shells in boiling water for a few minutes before cracking open.

# A-B SUPERMARKET

9 MILL ST. — ACTON — 853-0075



GRADE "A" FRESH KILLED - (NOT FROZEN)

# TURKEYS

5-9 lb. AVERAGE 43<sup>c</sup> lb

10-16 lb. AVERAGE 49<sup>c</sup> lb

LARGER SIZES AVAILABLE UPON REQUEST

PRESSWOOD COMPASS — SKINLESS — SHANKLESS

# READY-TO-SERVE HAMS

WHOLE OR HALF 75<sup>c</sup> lb

CENTRE CUTS 89<sup>c</sup> lb

PRICES EFFECTIVE WHILE ITEMS LAST THROUGH 'TILL DEC. 24TH

FRONTENAC — CARDBOARD CONTAINER

1/2 GAL. ICE CREAM 89<sup>c</sup>

ALCAN — 18" x 25 ft. ROLL — (SAVE 14c)

FOILWRAP 63<sup>c</sup>

SHIRRIFF — LUSHUS JELLY 3-oz. Pkg. 12/\$1.00

POWDERS 5-oz. Pkg. 8/\$1.00

SILVERDALE — 2-LB. BAGS — (SAVE 16c)

LONG GRAIN RICE 29<sup>c</sup>

CHERRY HILL — 12-OZ. WEDGE — (SAVE 16c)

OLD CHEESE 59<sup>c</sup>

OCEAN SPRAY — 14-OZ. — WHOLE OR JELLIED

Cranberry Sauce 2:43<sup>c</sup>

GREEN GIANT — GARDEN PATCH — (SAVE 17c)

PEAS 14-OZ. TINS 4 FOR 69<sup>c</sup>

NESCAFE (24c OFF) — 10-OZ. JAR — (SAVE 60c)

Instant COFFEE \$1.39

HEINZ — 14-OZ. TIN — (SAVE 29c)

TOMATO JUICE 3:51

CHRISTIE'S — 24-oz. — (SAVE 24c)

Fancy Thin Sliced SANDWICH BREAD — 4 FOR \$1

TOWN CLUB — NO. 1 — LB. PKG.

SIDE BACON 69<sup>c</sup>

FARM HOUSE — 24-OZ. PKG. — (SAVE 14c) — FROZEN

APPLE PIES 39<sup>c</sup>

- FRESH PRODUCE DAILY - P.E.I. — CAN. No. 1 — 10-lb. BAG

POTATOES 39<sup>c</sup>

PRODUCE OF U.S.A. — CALIFORNIA

EMPEROR GRAPES 2 LBS 39<sup>c</sup>

PRODUCE OF U.S.A.

Tangerines 2 DOZ \$1

SWARTZ — SEEDLESS JAFFA — (SAVE 16c)

RAISINS 2-LB. PKG. 59<sup>c</sup>

FORTUNE — 28-OZ. TINS — (SAVE 29c)

FRUIT COCKTAIL 2:85<sup>c</sup>

HEINZ — 16-OZ. JARS — (SAVE 17c)

Sweet Mixed OR Kosher Baby Dill PICKLES 3:51

HEINZ — 20-OZ. BOTTLES — (SAVE 17c)

TOMATO KETCHUP 2:69<sup>c</sup>

MAPLE LEAF — 28-OZ. TINS — (SAVE 14c)

MINCE MEAT 45<sup>c</sup>

Christmas Clearance of TOYS NOW 20% OFF Symon Hardware

BOWL for the fun of it... BOWL for Health. THE ENTIRE FAMILY CAN BOWL TOGETHER. It's the "IN" thing to do. GO BOWLING ACTON BOWLING LANES 10 MAIN ST. N. MEMBER B.P.A.C. 853-0170