



RANGE OF THE CANADA GOOSE is traced on a large map for the benefit of visitors to the park. (Staff Photo)



A PECULIAR BIRD is the pelican. His beak can hold more than his belly. He's an oddity at the park. Or is he a stib? (Staff Photo)



A PAIR OF TRUMPETER SWANS preen themselves on the left bank while lesser, known but more common birds mind their own business. (Staff Photo)

Kortright Waterfowl Park

Place for educational, pleasant visit

Hunter examination centres

Hunter examination centres will be operated by the Department of Lands and Forest in Dundas, Milton and Fergus for the coming hunting season. Examination will be given on appointment only and applications are to be made on form EX10 available at all Department offices. Applicants under 20 must submit with their application proof of completion of a Hunter Safety Training Course. In all cases, applications should be directed to the District Forester, Department of Lands and Forests, Hespeler, Ontario. The examination fee of \$3 should accompany the application form EX10. For further information call the Hespeler District office 658-9356.

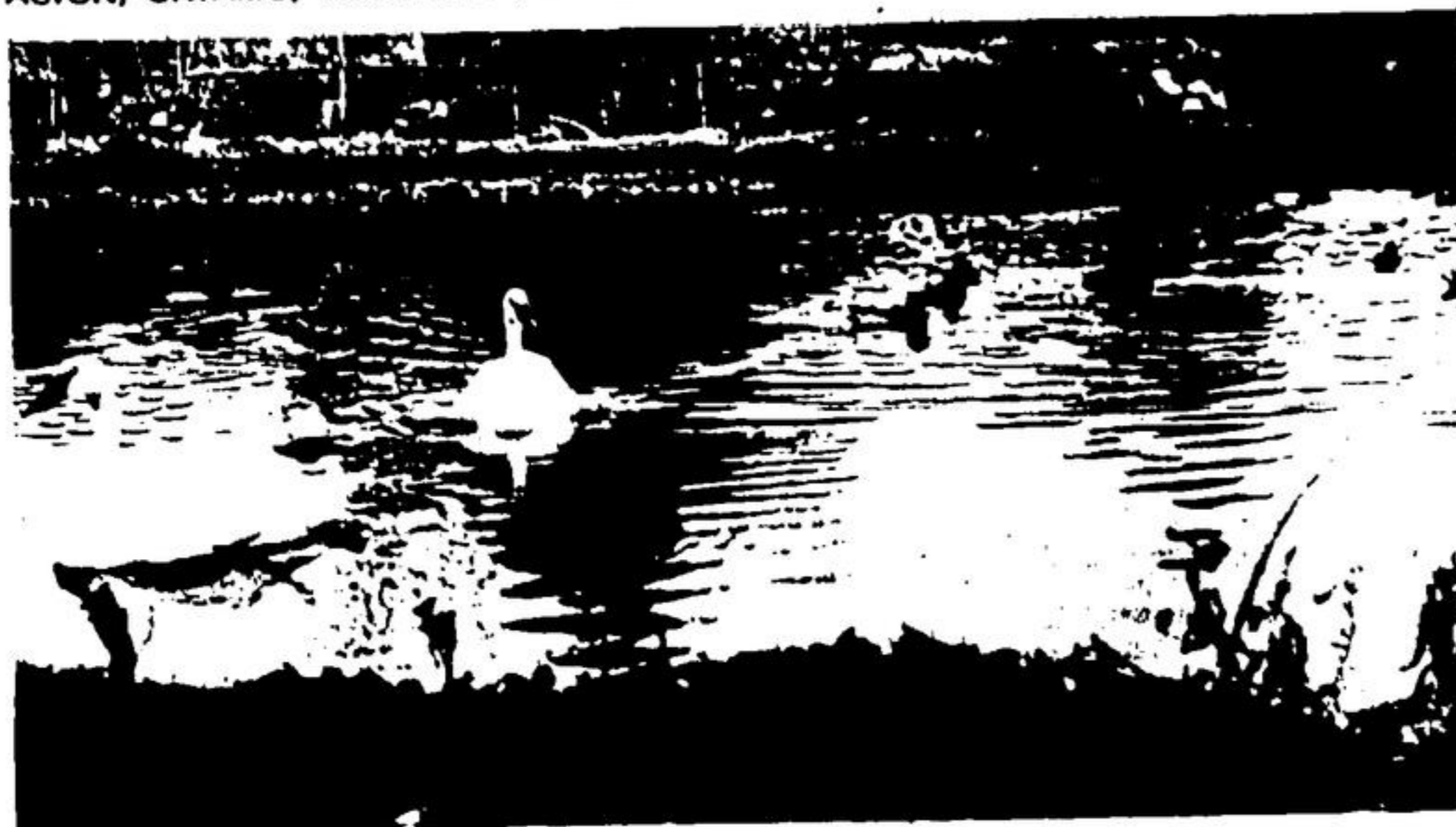
Regional officials meet in Timmins

Mayor Les Duby, as chairman of the Central Ontario Regional Development Council, last weekend attended an Ontario Regional Development Council meeting in Timmins. He flew north Friday, returning Monday. The heads of all ten councils in Ontario attended the meeting, and met with officials of the Agricultural Research Development Association.

The Acton Free Press.

ACTON, ONTARIO, WEDNESDAY, SEPTEMBER 18, 1968

Second Section.



RIPPLES on the duck pond do not mar the stately reflection of swans in Kortright Park.

Fall weekends with their brilliant colors and bright sunshine are ideal times to make family excursions to nearby points of interest, many of them only a few miles from Acton and district. One place which should be of particular interest to children and those with a naturalist bent is the Kortright Waterfowl Park and Niska Waterfowl Research Station, near Guelph.

In a natural setting beside the Speed River where it widens and flows swiftly towards the Grand, the park has been open since 1965. It is dedicated to Frank H. Kortright, founder of the Canadian National Sportsmen's Show.

The park contains about 1,000 waterfowl of more than 50 species, grouped in pens representing their native surroundings. Most of the captive birds, which range all the way from the common Wood Duck to the rarely seen Trumpeter and Whistler Swans, have the feathers of one wing clipped to prevent them leaving pens.

Besides the birds in captivity there are large numbers of wild waterfowl attracted to the park area in the migration period. Some remain to nest among the captive birds. Some others nest elsewhere but spend the winter at the sanctuary.

The park has dozens of natural ponds, fed naturally by springs.

It is also bisected by crystal-clear brooks where fowl quack, honk, whistle and make an assortment of noises common to their species.

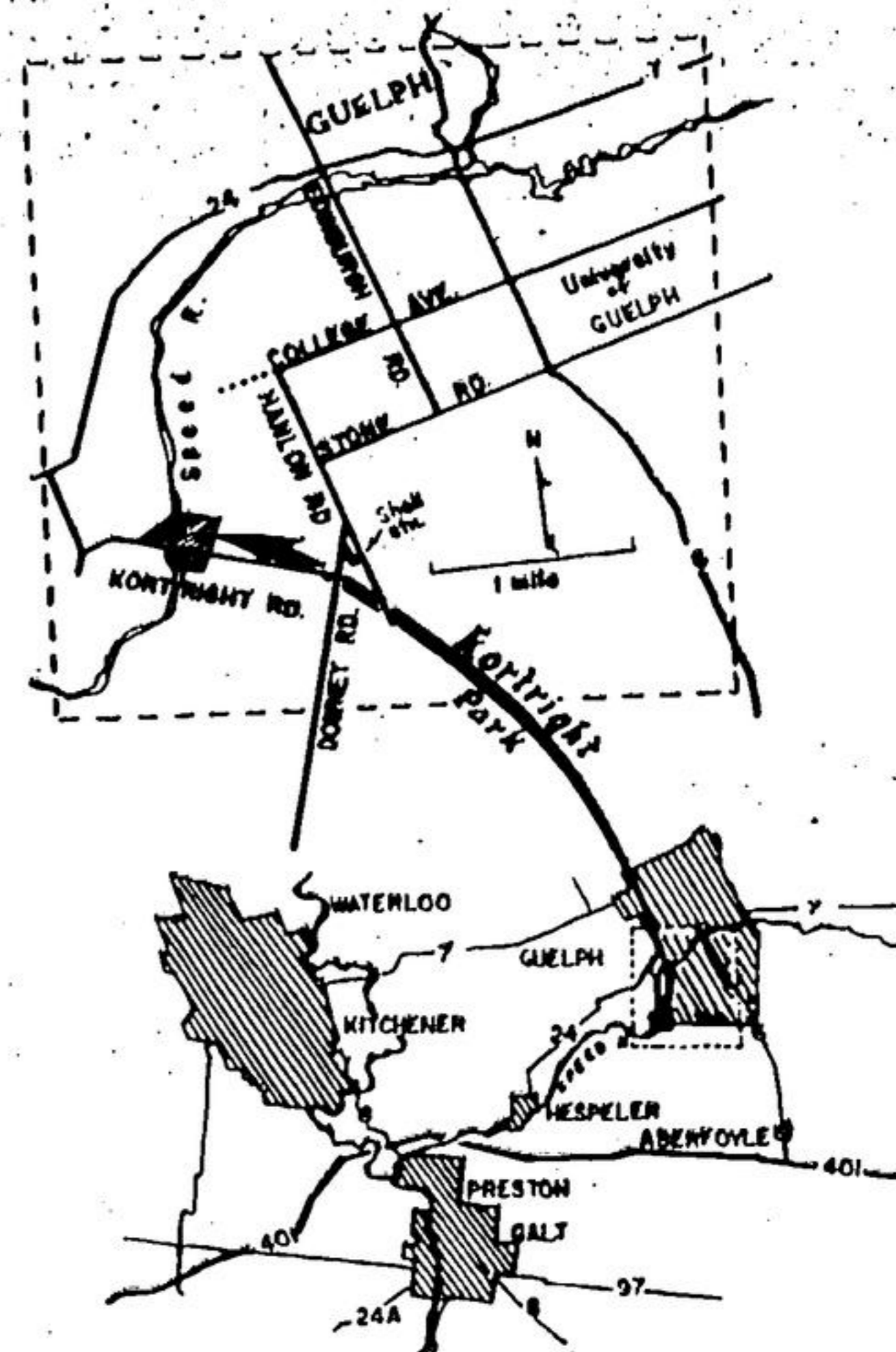
Research facilities include incubators and brooders for rearing birds artificially and under controlled conditions. Some pens are closed off during the nesting season.

The birds raised are used for propagation and research on physiology, nutrition, parasites and behaviour.

Kortright Waterfowl Park, although it has only been in existence for three years, has been called the most outstanding contribution to waterfowl management on the continent. It is operated by the Ontario Waterfowl Research Foundation.

How do you get there? Follow College Avenue west from the University of Guelph to Hanlon Rd. Turn left onto Hanlon, proceed to Downey Road, veer right and turn right onto Kortright Road. The park is about a mile down Kortright Rd.

Adjacent to it is a picnic and parking area with a nature trail along the Speed River. There is an admission charge of 50 cents for adults, children under 16 are free.



HUNTERS WILL LOOK at this flock of Canada geese at Kortright Waterfowl Park with itchy trigger fingers, but they can relax. The majestic birds are in a sanctuary which extends along both sides of the large park as well. (Staff Photo)



WHISTLING SWANS prepare for a bath in one of the spring creeks which trace watercourses through the park. (Staff Photo)



NOTHING LIKE a cold bath to disturb parasites. (Staff Photo)



ALMOST HIDDEN in their natural habitat, this pair of geese don't take kindly to posing for The Free Press camera. The gander challenges. (Staff Photo)

Announcement
A. VARGA
 ORTHOPEDIC
SHOE REPAIR
 OPENING
THURSDAY, SEPTEMBER 26
 AT
16 MILL ST. EAST
 (Next to Wilco's Bus Depot)

SIDEWALK DAYS

2 pc. Kroehler Chesterfield Suite
 Sofa and Chair with foam back and seat. Nylon covering
SPECIAL \$219.95

3 pc. Walnut Bedroom Suite
 Double dresser and mirror, 4-drawer chest and panel bed
SPECIAL \$150.00

5 pc. DINETTE
 36 x 60 Walnut Arborite table top and bronzone legs.
 4 Chairs in 2-ton Vinyl.
SPECIAL \$89.50

SIDEWALK SPECIALS
THURSDAY AND FRIDAY

Pillow Cases 95c pr.	Bath Towels \$1.35 ea.
Dish Cloths 20c ea.	Facé Cloths 29c ea.
Guest Towels 3 for \$1.00	Broadloom Mats 98c ea.

ACTON HOME FURNISHINGS

Acton Fall Fair
BABY SHOW

Sponsored by Mason Knitting Company,
 Acton A & B Food Store and Acton Pharmacy

SATURDAY, SEPTEMBER 21
 ★ 2.30 P.M. — IN ARENA ★

Entries taken at the judges' platform in the arena between 1 and 2 p.m.

CLASS 1A — For Girls up to 6 Months of Age
 CLASS 1B — For Boys up to 6 Months of Age
 CLASS 2A — For Girls from 7 - 12 Months of Age
 CLASS 2B — For Boys from 7 - 12 Months of Age
 CLASS 3A — For Girls from 13 - 18 Months of Age
 CLASS 3B — For Boys from 13 - 18 Months of Age
 CLASS 4 — Best Twins up to 2 Years of Age