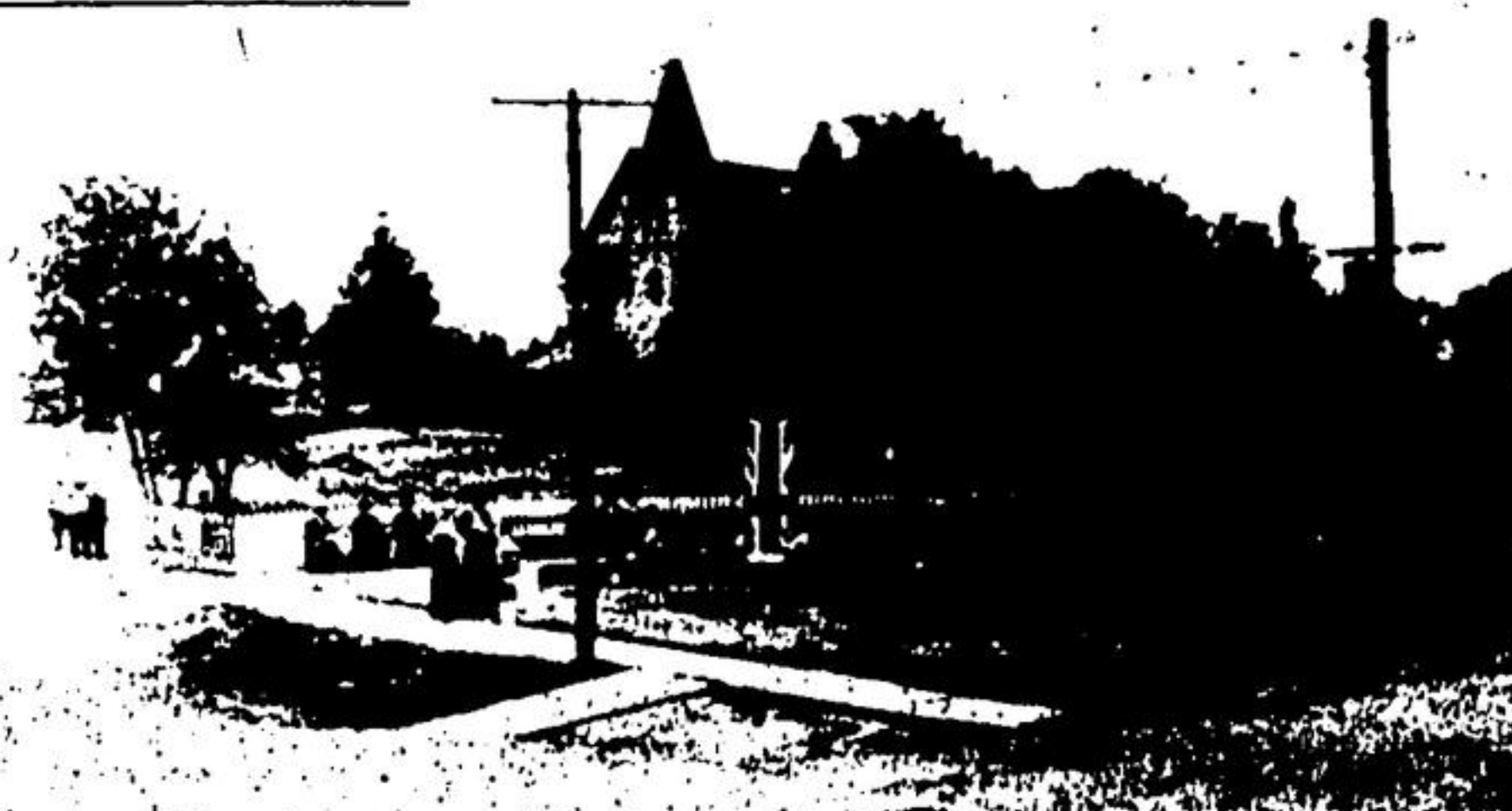


Pictures from Rockwood's past ...



LOOKING DOWN MAIN ST., Rockwood, toward the bridge, the late Richard Harris took this photograph which shows the many changes in the past 50 years or so. Stewart Royce was included in the photograph, sitting in front of his barber shop. Don Hilts of Rockwood has carefully preserved many of Mr. Harris's revealing old photographs of the charming village.

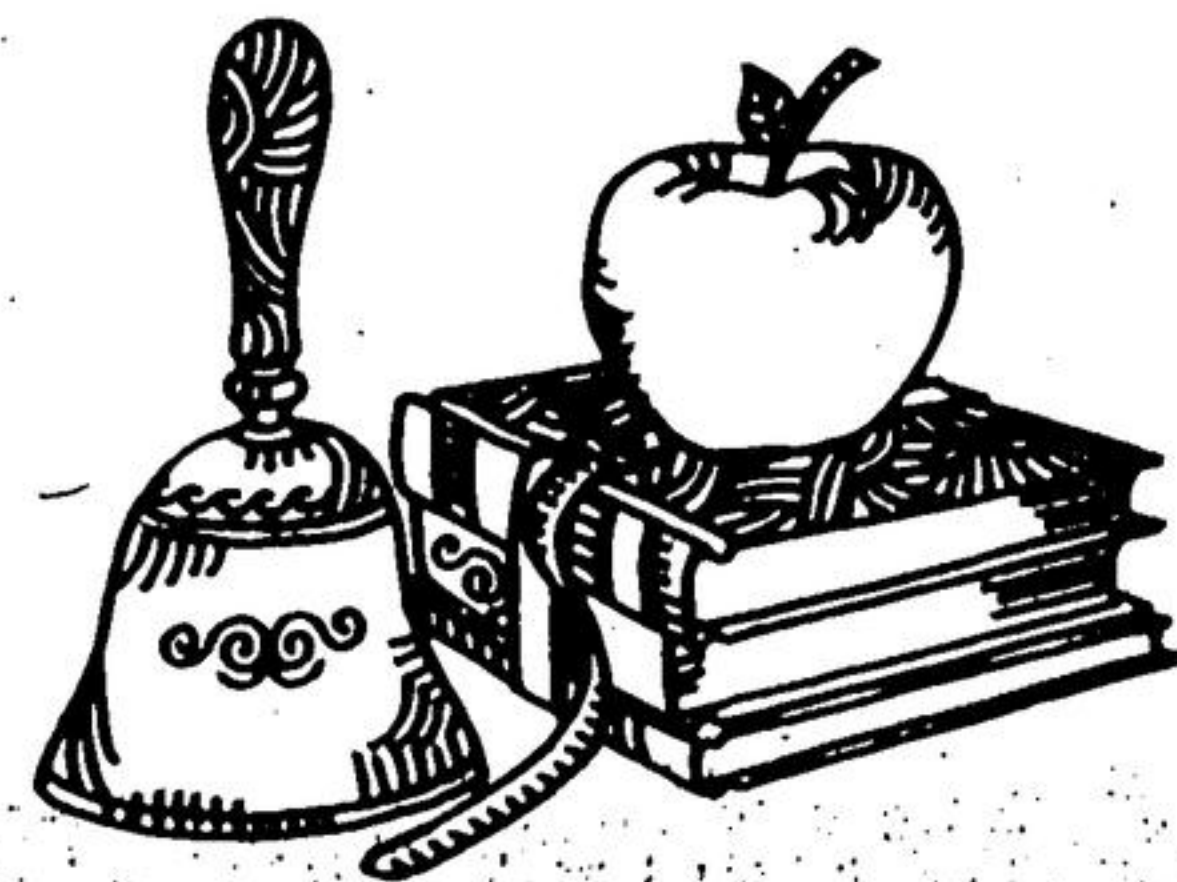


UNVEILING OF Rockwood's cenotaph was scheduled for the day the late Richard Harris took this photograph, just after the first World War. The Anglican church is shown in the background.

from the Richard Harris collection of photographs now owned by Don Hilts

\$10,000 cost for widening at Ashgrove

A settlement of \$10,000 has been offered the officials of Ashgrove United Church for the 17 feet required in a road widening which forces movement of the church building. County Council was told at its monthly meeting. The payment provides for the Church officials to be responsible for moving the church not later than August 15, 1969. The road widening is part of the improvements planned on the Seventh Line north of Hornby.



Back-to-school shopping? See HFC

If you run short of money outfitting your youngsters for school, here's a lesson for you: a Shopper's Loan from Household Finance can pay for all their back-to-school needs. With a Shopper's Loan you can shop anywhere—and HFC will tell you before you borrow what your loan will cost. Back-to-school shopping? Do it with a Shopper's Loan from HFC.

Before you sign on the dotted line, know what your loan will cost.

Borrow up to \$5000
Take up to 60 months to repay

Ask about credit life insurance on loans at low group rates

HOUSEHOLD FINANCE

GEORGETOWN
41 Main Street North—Telephone 877-5221
(next to Silver's Department Store)
Ask about our evening hours



OLD ROCKWOOD BALL TEAM of many years ago recalls memories. Standing, left to right, are Roland Ramshaw, Jack Fitzsimmons, John Gibbons, Fred Gibbons, John Hewit and Bert Sewell; sitting, left to right, Fred Osburn, Herb Gibbons, Pete Saunders and Ralph Richardson. Mr. Saunders has the village bake shop now.

ARTHUR A. JOHNSON, O.D.
OPTOMETRIST
Open Every **WEDNESDAY** and **SATURDAY**
34 Mill St. E. — Acton
853-2520

Automatic oven in a range that's budget lovin'!

- Frigidaire Cook-Master oven control starts/cooks/stops—automatically at times you select.
- Two big 8" and two 6" surface units.
- Automatic appliance outlet starts/stops any appliance.

\$2.50
A WEEK AFTER SMALL DOWN PAYMENT

Manning Electric



LOOKING UP ROCKWOOD'S Main St. from the bridge, this picture must have been taken before 1922 — the year the highway was paved through the village. More pictures from this extensive and interesting collection will be run in the Free Press in weeks to come.

THE RED & WHITE STORY

How would you like a 40-piece set of Countryside Pattern Dinnerware at a cost of \$11.60? Well, starting this week, we offer a 10" plate at 29¢ with \$3.00 order, or 2 plates at 29¢ each with \$4.00 order, etc. Next week we'll offer the cup, then the saucer, then the dessert dish and finally the bread & butter. And to round out your set, we offer complete place as a mail-in offer. So shop Red & White the next 15 weeks and have a beautiful set of Countryside English Dinnerware for your holiday meals.

418.932
PIECES OF ENGLISH DINNERWARE
for **RED & WHITE** Shoppers

SPECIALY SELECTED PRIME RIB
ROAST 79¢ lb

THICK CUT FOR THE BARBECUE — JUICY — TENDER
Rib Steaks 99¢ lb

LEAN — MEATY — CHUNK STYLE — BRAISING
RIBS - - 49¢ lb

SWIFFY'S PREMIUM — MILD SEASONED — SLICED
BOLOGNA 59¢ lb

PRIMROSE BRAND — MILD SEASONED — BEEF
Steakettes 53¢ lb

MAXWELL HOUSE — INSTANT Reg. \$1.39 14¢ Off Pack 6-oz. Jar
COFFEE \$1.09

SAVE 29¢ — 12 REGULAR, SUPER OR SLENDER LINE
Kotex SANITARY PADS 2:89¢

HEINZ — FANCY — SAVE 13¢ — 19-oz. TINS
Tomato Juice 5:89¢

SAVE 10¢ — LIBBY'S TOMATO — 11-oz. BOTTLES
CATCHUP 2:37¢

ROSY RIB — 39¢ VALUE — 48-oz. TINS
Hawaiian PUNCH 25¢ 4 TINS 99¢

THIS WEEK ONLY!

"Countryside" ENGLISH DINNERWARE
Unlimited Quantities at this Special Price!

Only **29¢** Each
ONE WITH EVERY \$4 PURCHASE NO LIMITS NO COUPONS
10" DINNER PLATES

ONY: No. 1 — 25-lb. BAG
Potatoes - 73¢

BEST BUY! — SAVE 38¢ — WHITE SWAN
Facial Tissue 4 FOR \$1

BABY BUDGET BUNDLE — 8¢ OFF — 6-JAR PACK
HEINZ ASSORTED
Strained Foods 69¢

SAVE 9¢ — 5 VARIETIES — LIBBY'S DEEP BUTTERED
Vegetables 4:89¢

SAVE 30¢ — 3-lb. CARTON
Milko Instant \$1.09
SKIM MILK POWDER

SAVE 18¢ — DEEP BROWNED — WITH PORK — 8-oz. TINS
Libby's Beans 6:99¢

SAVE 43¢ — DR. BALLARD CHAMPION — 15-oz. TINS
DOG FOOD 8:89¢

GARDEN HEADQUARTERS

Large Selection of
EVERGREENS — SHRUBS — PERENNIALS
ROSES POTTED READY TO PLANT

• CUT FLOWERS AND POTTED PLANTS ALWAYS AVAILABLE

"Check your Evergreens, Shrubs and Trees for insect damage"

"EVERYTHING FOR YOUR GARDEN"

Caroline Flower & Garden Shop
TWO MILES WEST OF ACTON — SOUTH SIDE OF HWY

SIX OF A KIND

These cars will be sold only to garage operators, or customers who will recondition and have their own mechanics make the following vehicles road-worthy if repairs are required.

Terms \$25.00 Down — \$4.00 Weekly.

1962 FORD Galaxie 500, Lic. # J86259, with auto. \$275.

1962 BUICK LaSabre Sedan, Lic. # J86246, auto, power steering, radio and power brakes \$300.

1963 RAMBLER Sedan, Lic. # J86227, radio, standard transmission \$265.

1961 VAUXHALL Cresta, Lic. # J84756, needs clutch \$90.

1963 CHEVROLET Bel Air, Lic. # 521366, 8 cylinder, standard transmission, needs valve job and metal work \$250.

1961 CHEVROLET 2 Door, Lic. # 572958. Needs motor work \$140.

All cars may be road tested. We feel that re-conditioning these cars will congest an already very busy shop.

ENQUIRE TODAY BY DIALING 878-2355

MILTON MOTOR SALES LTD.
388 Main St. Milton 878-2355