

# The Acton Free Press

Fourth Year—No. 8

ACTON, ONTARIO, WEDNESDAY, AUGUST 21, 1968

Published as Second Class Mail by the Post Office Dept., Ottawa, for Postage Paid in Cash at Acton, Ontario

Sixteen Pages—Ten Cents

## Plan large shopping plaza 300 homes on McCullough farm

Plans for a large shopping plaza and a 300 home subdivision on the McCullough farm were revealed to the Free Press this week by Realtor Alec Johnson.

Mr. Johnson said the 100 acre farm, situated along the eastern

end of town on No. 7 Highway, has been sold to Heritage Homes Ltd., which is part of the Rubin Corporation. The firm, one of the country's largest builders, has plans for a large shopping plaza complex to run parallel to No. 7 Highway and will build

homes on the remainder of the property. It is hoped the project will be started early in 1969. Since part of the farm is in town and a large part in the Township of Esquesing, the company will ask the town to

take application for annexation of the Township land.

If the land is annexed successfully, the construction company will ask the town to zone the land running parallel to No. 7 as commercial for the shopping plaza and parking lot. The company informed Mr. Johnson that once the plaza is underway, the first chance for space will be given to existing local merchants. Surveyors are

already at work on the property. Arrangements are being made to initiate annexation proceedings. Well-known in Acton and district, the McCulloughs have made arrangements with the builder to stay on their farm home for a number of years.

The Rubin Corporation has shown a great deal of interest in further development in Acton since the company started building homes in Lakeview

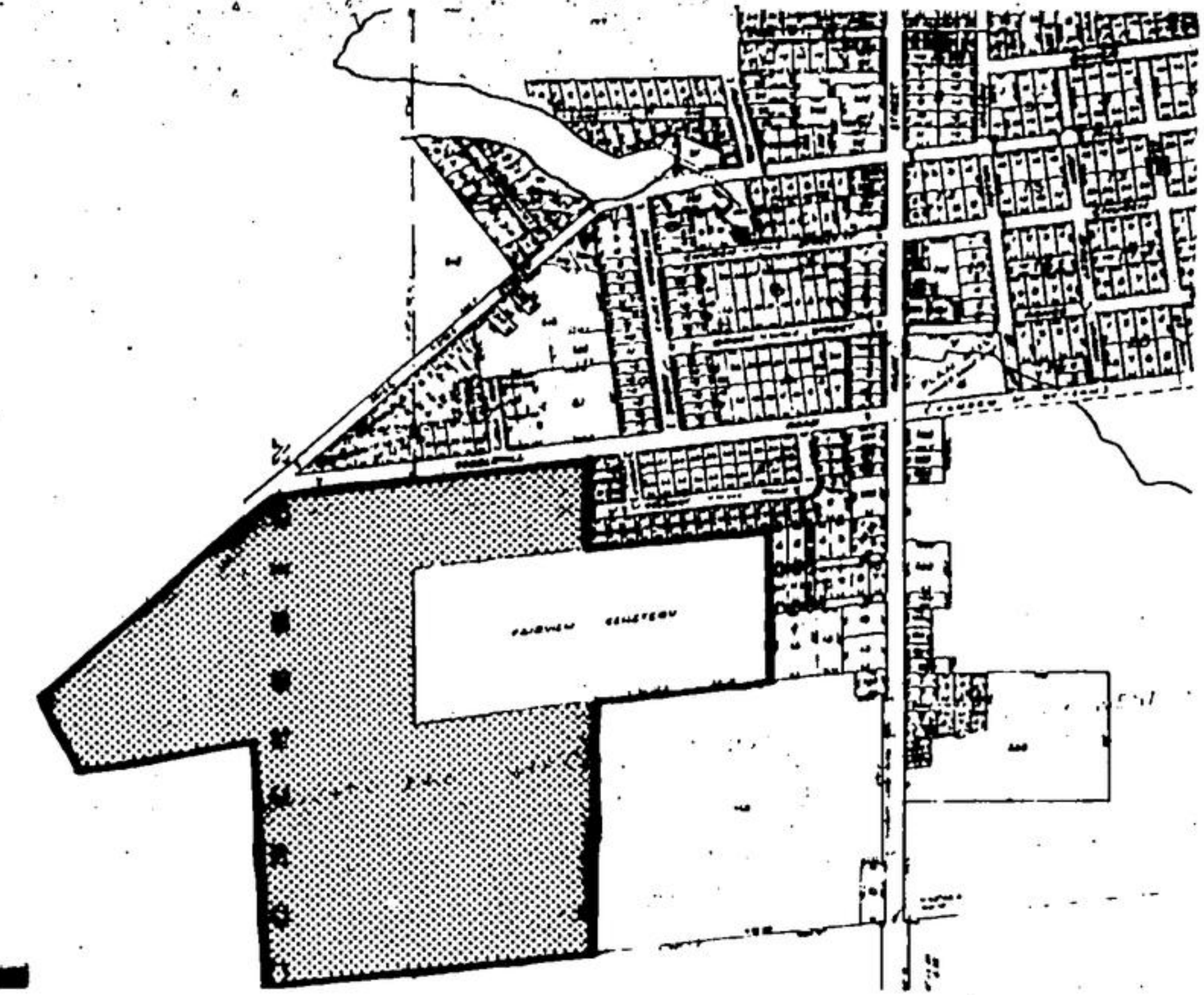
subdivision. They expect to complete the erection of homes in Lakeview early in the new year. Then they hope to begin on the McCullough farm.

Although several firms have been dickering with local and district land owners for property, this is the first indication of the town's anticipated growth.

Mr. Johnson said the firm has the resources and know-how to erect a "big" shopping plaza.



COME ON IN, the Jamboree's finest Peeking out of their tent are John Vanderkooy, Acton; Jim Rea, Steve Laidlaw and Brian Ventry of Georgetown. They're at the first Ontario Boy Scout and Venturer jamboree at Kelso Conservation Area, ten miles south of Acton. More pictures and story inside today's Free Press. (Staff Photo)



LAND SOUGHT by annexation is shown inside heavy border. The white area shows the present cemetery land.

Reserve decision, but . . .

## O.M.B. will likely grant Acton 69 town-owned Esquesing acres

Although the Ontario Municipal Board reserved its answer, it seems quite likely a favorable decision will be given to Acton's proposal to annex 69 acres of Esquesing township bounded by Mill St. and Cobble Hill Rd. The land is owned by the town.

At a brief hearing Friday morning, the Township, represented by Solicitor Terry Baines, registered no objection to the annexation subject to the condition the area not be used for municipal garbage dump purposes.

Acton solicitor C. F. Leatherland said the town had no intention of turning the land into a garbage disposal site but rather into a residential area.

Mr. Baines told the sparsely attended hearing in the council chambers that the township council had been petitioned by ratepayers in the vicinity of the land to be annexed to make sure the town did not turn it into a garbage dumping area. Subject to the usual procedure, Mr. Baines said the township had no other objection.

"Could this possibly happen?"

asked the chairman, Mr. Shriver. Mr. Baines replied because the township was not zoned, there was no assurance for residents of the area that it couldn't. Although the town had advised the area would probably be zoned R 1 if it was annexed, residents have no real protection said Mr. Baines. He admitted, however, the possibility of turning it into a garbage dump was remote.

Mr. Blake, only member of the O.M.B. present besides Mr. Shriver, the chairman, asked where the Board would get the authority to stop this from happening. Mr. Baines admitted it was a puzzle.

## Receives Guelph B.A.



Donna Shortill, eldest daughter of Mr. and Mrs. Harry Shortill, Ballinasfad, has successfully completed her B.A. course at the University of Guelph.

Donna is a graduate of grade 13 in Erin District High School. At university she majored in history and political science as well as studying English courses. By taking advantage of the summer semester system at Guelph, she was able to complete her B.A. in two years. She will attend Ontario College of Education this fall in preparation for teaching high school in the future.

C. F. Leatherland said the petition against establishing a garbage dump in the area had been filed a couple of years ago when Acton was looking for a garbage disposal site. In the meantime the town has signed a long term lease for a garbage disposal site elsewhere.

Mr. Leatherland also said property across from the site was zoned R 2 so it wasn't likely council would decide to put a dump nearby. If the town got the land, said Mr. Leatherland, council must decide how much would be needed for the cemetery and the rest would be zoned R 1 and R 2.

Reassured that the petition from ratepayers dated back to a previous time and was not circulated in response to the hearing, the Chairman said the township leaves itself wide open in cases like this because it has never been zoned. He asked if there were any objections to the land being annexed why weren't the objectors present?

(Continued on Page 3)

## Acton, Nassagaweya share rep

## County rules on education board

Halton's new County Board of Education, to be elected this fall, will have eight Burlington representatives and six from Oakville plus one from Georgetown, one from Milton,

one from Esquesing and one from Acton-Nassagaweya. Two others will be Separate School representatives. The composition of the new board was approved by Halton

County Council Tuesday. The county was charged with the responsibility of apportioning the members, guided by the residential and farm assessment of the county municipalities.

Reeve Alan Day pointed out the committee considered two appointments from the Milton-Nassagaweya-Acton area but decided this could have led to Milton having two seats. The committee chose instead to allocate one seat to Milton and the other to the Acton-Nassagaweya area.

Nassagaweya Reeve W. Coulter disagreed with the principle of lumping Acton and Nassagaweya together. He pointed out Nassagaweya is as large in area as Burlington even though the township only has 3,000 residents. The north representative, he pointed out, will have to cover a town of 5,000 plus an area as large as Burlington. He said he failed to see why each municipality couldn't have at least one representative.

Reeve Day emphasized the ground rules for the apportionment of members had been laid down by the province and the committee had acted within them.

Reeve Coulter acknowledged this was the case and assured members his township would seek alterations to the legislation. Reeve H. Hinton, eyeing the provincial factor figures that were part of the formula on which representation was established, said they supported his contention the assessment in the county was not equalized and Acton had in fact been paying more than its fair share of assessment for a number of years. He predicted that if the county did not move to the assessment commissioner system soon, it might not have the option of a decision in the matter.

Halton is one of the very few counties in Ontario that has not introduced assessment at the county level rather than the local level of government.

## North gets only two trustees on separate school set-up

The 14 member County Separate School Board will include just one trustee to represent Acton, Milton, Esquesing, and Nassagaweya, with seven from Burlington, five from Oakville and one from Georgetown.

allowed is 14 for areas with a population of more than 100,000 but less than 200,000. The allocation of representation is based on the residential and farm assessment for separate school purposes adjusted by a provincial equalization factor supplied by the Department of Municipal Affairs.

The total number of trustees

## Norman Braida elected Beardmore's president

Following the annual meetings of the shareholders and directors of Beardmore and Co. Ltd., on August 14, G. H. Dickson, chairman of the board, announced the election of N. J. Braida as president, and his appointment as general manager. J. H. Creighton was elected vice-president, and appointed treasurer.

W. J. Beatty will continue as a director of the company. Other members re-elected to the Board were: S. G. Bennett,

G. H. Dickson, R. L. Evelan, J. G. Greifeneder, C. R. Heard and F. L. Racey.



NEW OFFICER with Acton O.P.P. detachment is Const. Ray Wood, a native of Blackpool, England. He has been transferred from Downsview. His wife and child expect to move here soon. (Staff Photo)

## Citizens' Band goes to Ex Thursday

The Acton Citizen's Band under the direction of Dr. George Elliott will be performing at the Exhibition this Thursday morning at 9:30 a.m. in the north bandshell.

They will be competing against bands from Delhi and Beamsville. The groups will be judged on their presentation of "Sun Prairie" and a march of their choice.

According to Dr. Elliott, the band will be practicing every night this week in preparation for the event.

## New material on Mill Street sewing centre opens next week

The Acton main street is taking on new material. Gwen Andrews and Ruth Masales are starting a sewing centre in the store vacated by Toth Shoe Repair.

The shop, scheduled to open next Wednesday, will carry a wide range of dress and drapery fabrics. In addition it will stock trimmings, lace, and all the little

extra supplies needed for home sewing. Patterns from Simplicity, Butterick and Vogue will be available right in the store.

Singer Sewing Machines began moving in a display this week. The shop will sell machines and equipment for them. A special section will stock wools and knitting supplies.

Next Wednesday is the big day. Singer have ordered 100 roses for the occasion, and shop owners are planning something extra for their first customers.

## Civiero firm wins county road contract

Civiero Construction Co. Ltd. of Acton was awarded a \$113,626.64 county contract for reconstruction of .45 mile of road on the Waterdown Road in Burlington during the Tuesday meeting of Halton County Council.

lowest tender for the work. Another tender accepted Tuesday was that of All-Weather Asphalt Mix Ltd. for the construction of one mile of road north of the Queen Elizabeth Highway on the Trafalgar Road. The price for the one mile was \$486,127.76.

## Committee of adjustment

The Acton committee of Adjustment met in the town hall on Monday evening.

An appeal was approved for a side yard variance for the new addition on MZ Bennett Public School.

An application was received from Carr Surveyors representing a man from Scarborough, requesting permission to sell part of his property from lot eight to lot nine on Mowbray Crescent to comply with the housing by-law. The committee reserved judgement on the application.

## Reliable Taxi loses \$230 in break-in

A break-in at Reliable Taxi snack bar was discovered Saturday morning at 6 a.m. by proprietor Don Grein and reported to police.

Missing cash amounted to \$230.

Entry had been gained by sitting a screen on the north side of the building.

Police are still investigating.

## Two Milton doctors are named coroners

The appointment of two Milton doctors as Coroners for Halton was announced this week by Halton East M.P.P. Jim Snow.

Dr. Ivan Hunter and Dr. Donald Aikenhead were named coroners by the Attorney General's Department and in Orders in Council passed August 8.

Announcing the appointment, Mr. Snow indicated there had not been a coroner in Milton recently since the resignation of Dr. G. E. Syer.

Facilities installed in the Milton District Hospital during the last addition will make it possible for post mortems to be carried out locally. Recently they have been conducted in Oakville.

## Bus service may halt Friday due to strike

Bus service through Acton will halt Friday if the transit strike takes place.

Gray Coach Lines is a TTC subsidiary, and will cease all operations in the event of a strike of Toronto transit workers.

Gray Coach Lines employs about 200 drivers and carries about 16,000 passengers daily.

Many travel by bus from Acton, some to work, some to school, and some to shop. Tuesday morning over two dozen took a bus to Toronto, many headed for the C.N.E.

And added to the problem, Acton's railroad station is still closed, and the phone is disconnected.

## County board

## Fear no Twp. representation

A political principle dealt with in great detail during pre-Confederation days in Canada cropped up at Nassagaweya Council Monday in a discussion on plans for the new County School Board representation by population or area.

While Nassagaweya has an area almost equal to that of Burlington's, the population is only a small fraction of the southern town's. It is so small

chances are, under the present system, Nassagaweya might not have a representative to the 20-man School Board, while Burlington will have eight.

"I think every municipality should be represented on the school board and I think Burlington could jolly well do with one less," Councillor Mrs. Anne MacArthur proclaimed.

Reeve William Coulter explained Burlington was entitled to nine members, according to the formula used. The formula is based on provincially equalized farm and residential assessment.

According to committee recommendations Burlington would have eight representatives, Oakville would have six, two from the separate school boards, one from Milton, Georgetown and Esquesing, and one to represent both Acton and Nassagaweya.

The recommendations were forwarded to County Council yesterday (Tuesday) for consideration. If the County Council accepts the recommendations Nassagaweya would have the opportunity to appeal to the Minister of Education and ask for a 21-man board rather than 20.

## Young cyclist struck by car fractures skull

Struck by a car while cycling near his home Saturday, five-year-old Gregory Wiles of R.R. 1, Limehouse, was hospitalized with a small skull fracture, Milton O.P.P. report.

The boy's mother rushed him to Georgetown Hospital and he was later transferred to Sick Children's Hospital in Toronto for treatment. Driver of the car was Lorene Sanford of Limehouse. The accident happened on 22 Sideroad just east of the Sixth Line.



WITH YARDS OF WORK LEFT TO DO, Ruth Masales and Gwen Andrews have planned the grand opening of their new sewing centre for Wednesday, August 28. (Staff Photo)

## Head injuries send driver to Western

An Acton district driver was hospitalized with head injuries Friday afternoon following a single car accident on Highway 7 at Crewson's Corners, Robert Vlastra, R.R. 3 Acton, was treated at Georgetown District Hospital and later transferred to Western Hospital in Toronto. His car received \$800 damage.

Milton O.P.P. investigated two other accidents Friday involving Acton area motorists. Charles Gillies, R.R. 4 Acton, suffered lacerations to the arm, face and head in an accident on 22 Sideroad just east of the First Line Esquesing, early Friday morning. That morning also, Lyle Alexander Cripps of R.R. 2 was involved in a one-car accident on the Third Line just north of Highway 7. Damage in these two accidents totalled \$275.