

INSIGHT



ACTON



IN THE LINE-UP for Jack Ridley Cartage Limited are some of the 21 heavy duty trucks that haul mainly aggregate material within a 50-mile radius of the truck yard on Highway 25. (Staff Photo)



CHARLIE HOLMES etches the Disston name on hand saw blades at H. K. Porter. The blades are shipped to all parts of Canada and the Commonwealth. (Staff Photo)

Jack Ridley Cartage

Moves up to 150 tons a day

Trucks span 50-mile radius

Jack Ridley Cartage Limited often moves up to 150 tons of sand or gravel a day.

They are the prime shippers of Argo Block and the Acton Limestone Quarry. In addition they frequently carry livestock and farm produce, and have recently started hauling fertilizer.

From the yard on Highway 25, the trucks span out for a radius of 50 miles, although some runs go as far as 150 miles.

Owner Jack Ridley reports that business is booming. The company presently has 23 on the payroll and a fleet of 21 heavy-duty trucks.

To expand further, Ridley is in the process of building an extension to the garage on Highway 25.



HOWARD DWYER mixes dyes in huge vats at Heller and Company. The plant can produce leather in practically any color ordered. (Staff Photo)



DYED LEATHER hangs on circular racks to dry every color for all types of leather goods. (Staff Photo)



LIKE A MILK BATH only more potent, Jack Walker washes planer knives in a specially controlled washing machine. (Staff Photo)

Frank Heller and Co.

Supply shoe industry with products

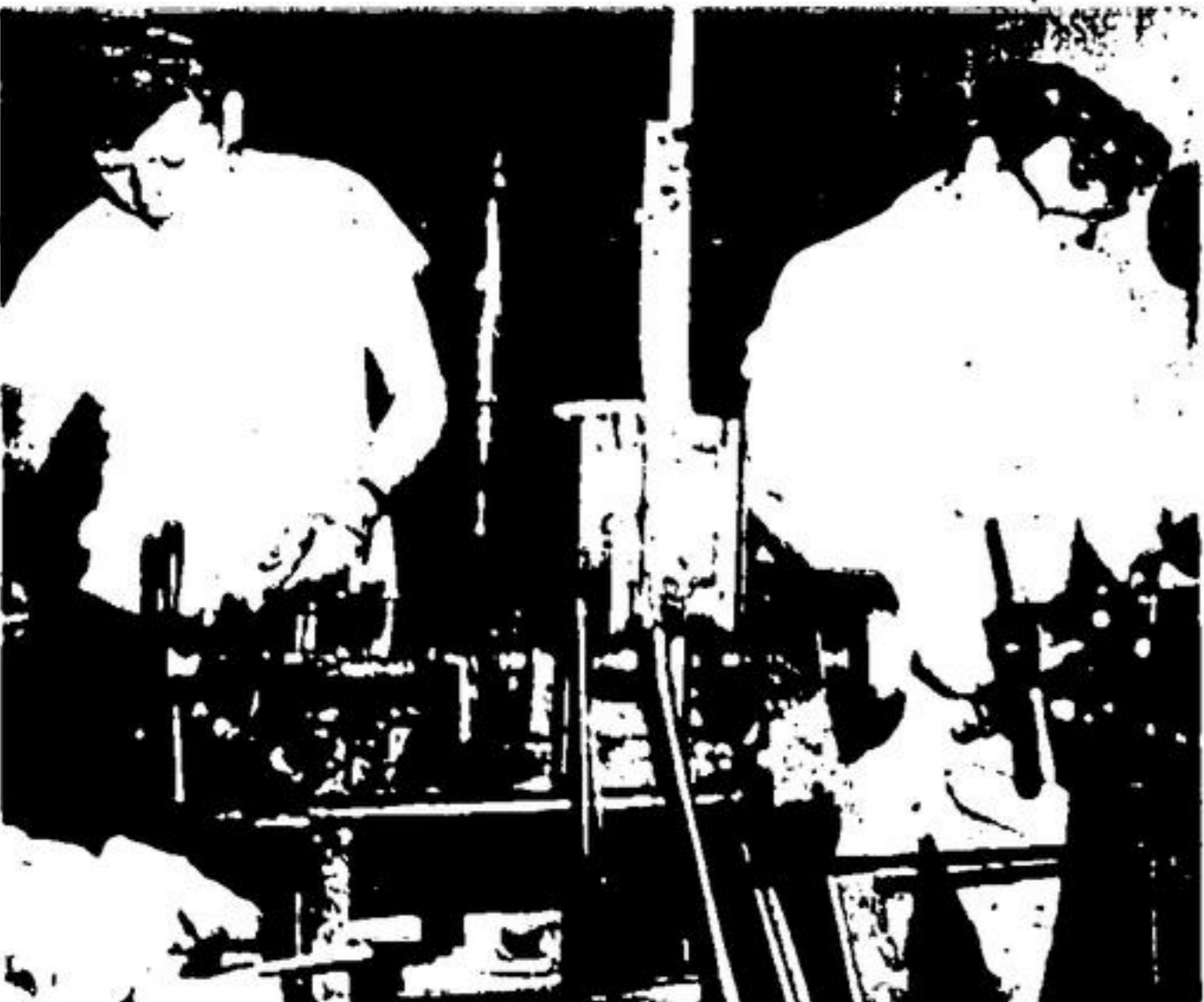
Frank Heller and Co. specialize in spraying and embossing leather, most of which is used in shoes. There are dozens of other uses, though, for Heller leather from key cases to drink

coasters. The Heller Co. keeps 14 employees busy mixing colors, spraying and drying their unique product for shipment all over the province.

The company has been in existence on Willow St. for the past six years and is steadily expanding. Frank Heller is company president.



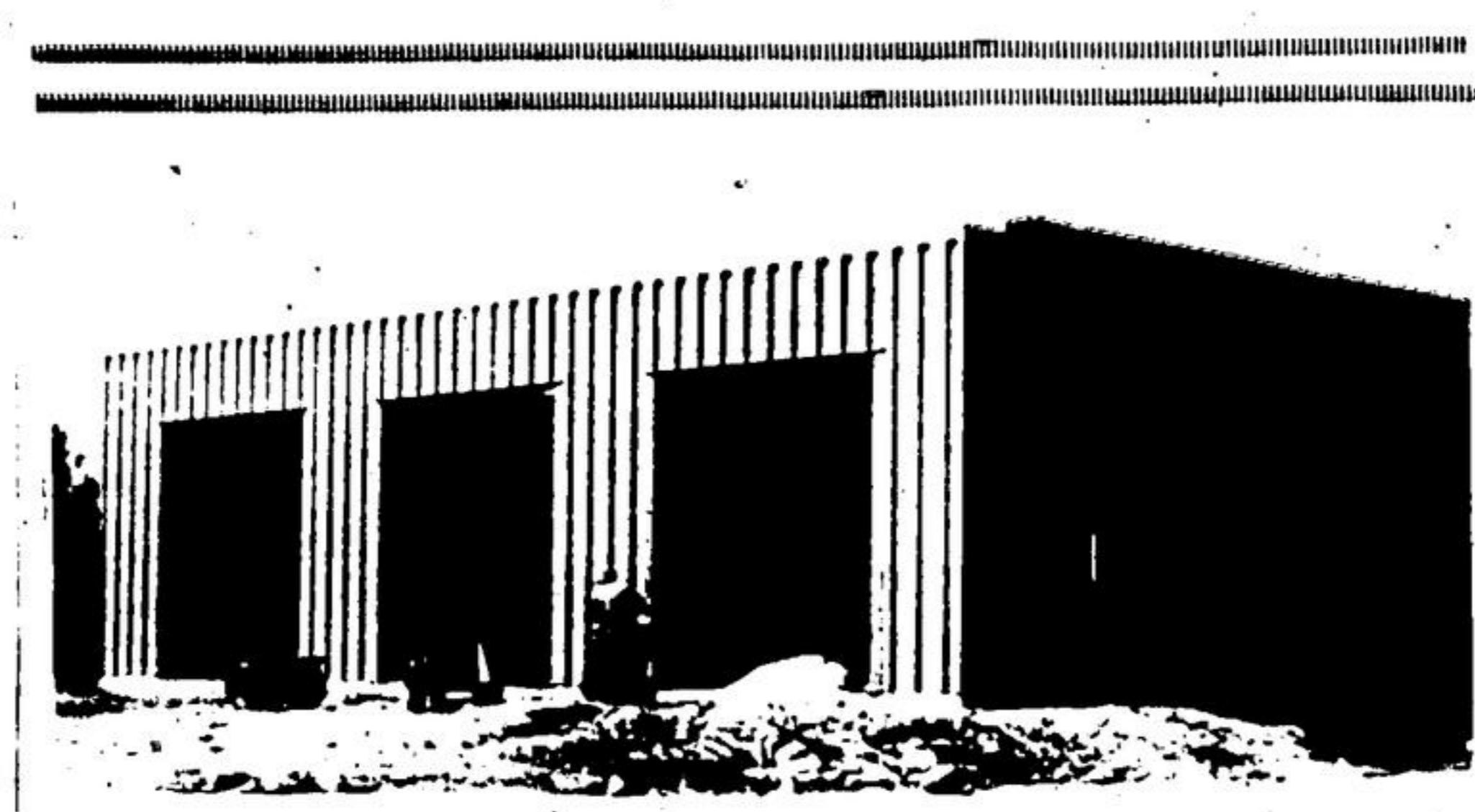
SPRAYING AND EMBOSsing the various types of leather is one of the major operations at Frank Heller Company. Spray hoses are used to apply the paint and the leather is dried on racks. (Staff Photo)



V-MILLING INSERTED SAW-HOLDERS for Disston are Bill Pendleton and Leonard Forte. (Staff Photo)



WEARING PROTECTIVE industrial glasses, Dave Markham skillfully breaks down the blade on a combination circular saw.



NEW ADDITION TO the facilities at Gov Cart. trailers will be housed for repairs by Adam age is this gleaming steel garage where tractor. Frost mechanic. (Staff Photo)

FRANK HELLER & CO. LIMITED

SERVING THE CANADIAN SHOE INDUSTRY WITH SPLITS, PIG SKINS AND LINING MATERIAL "SOLIN"

59 WILLOW ST. NORTH
ACTON - ONTARIO
TELEPHONE - 853-1850

JACK RIDLEY CARTAGE LIMITED



LIVESTOCK AND FARM SERVICE
FERTILIZER
BULK SPREADING SERVICE

CONCRETE BLOCKS
CINDER BLOCKS
CLAY BRICK
CONCRETE BRICK
SAND - STONE

DUMP TRUCKS FOR HIRE

PCV Class FS & F • Fully Insured • Telephone Acton 853-0730