

History of growing school

Today's modern 21-room Brookville Public School is a far cry from the tiny one-room "little red schoolhouses" that used to dot the lines and side-roads of Nassagaweya Township.

There are those who will still argue the one-room school was the best place to receive an education. But those who were educated in Nassagaweya prior to 1960 (when Brookville first opened) didn't have home economics and industrial arts rooms, a science classroom, after-school clubs, home-to-door bus service, staff rooms, and an auditorium, kindergartens, house leagues, senior public schools or massive physical education programs like they do today at Brookville School.

When it was first occupied in October of 1960, the original Brookville School had eight classrooms, two offices, a general purpose room, boiler room, and washrooms. Its opening meant the closing of the one-room schools scattered throughout the township, including S.S. No. 1, 2, 3, 4, 5, 7, 8, 9, and another temporary quarters in the Township Hall. S.S. 10 (Campbellville) remained open, and still is; and so did S.S. 6 at Kelso which was a separate school section maintained by its own board of trustees.

The year Brookville opened, its enrolment was 274. In the fall of 1961, it was crowded and the general purpose room had to be turned into a classroom. The growing township population necessitated the auditorium being kept in use as a classroom for the next six years.

In 1964 more rooms were needed, and two new general classrooms were opened. In 1965 three more classrooms were required so the board built a two-room addition and brought in a Portable Classroom. That fall, the township's first kindergarten was launched. The Kelso school joined the township system that year, too.

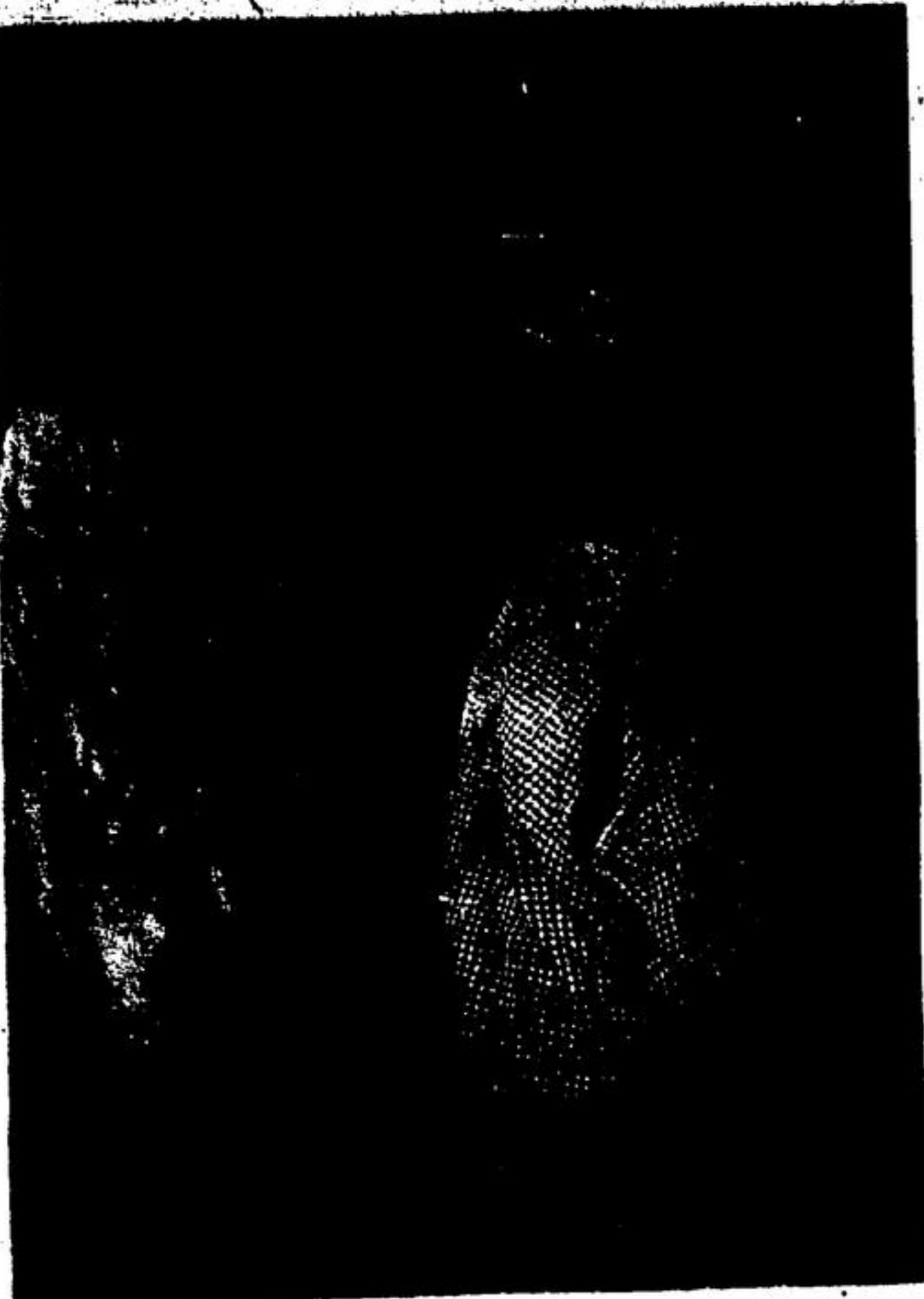
By 1965 another room was demanded so a second portable classroom was added. This year, the nine-room addition was completed. The addition should have meant the closing of the two portables, but again the growing population (coupled with the transfer of all Grade 7 and 8 students from the Campbellville school) left the board still in need of one portable. Today, the enrolment is 545.

The original eight rooms have been turned into a primary wing for kindergarten and Grades 1 to 3 children. The four permanent rooms added in 1964 and 1965 plus the one portable are being used as a junior wing for Grades 4, 5 and 6. And the newest addition is a senior wing, with the exception of the one kindergarten classroom.

Brookville School has come a

long way when you look back to the original school that was erected in 1960. It has been a longer road when you picture the one-room schools it replaced, that were still in business as late as the spring of 1959.

One view of the new addition at Brookville Public School in Nassagaweya



A WISTFUL ARTIST, probably a "Picasso" of the future, expresses her inward thoughts in an outdoor scene she's painting in the kindergarten class at Brookville School. The painter, Geraldine Windmoller, is one of the students in the new kindergarten classroom which parents and anyone interested may tour after Friday's opening ceremony. (Staff Photo)

THE PUBLIC SCHOOL BOARD
OF NASSAGAWEYA
DESERVE OUR SINCERE
GOOD WISHES UPON THE
OPENING OF THE
CENTENNIAL ADDITION TO THE
BROOKVILLE PUBLIC SCHOOL,
OCTOBER 27, 1967.

C. ANDERSON & CO.
24 - 26 WYNDHAM - GUELPH
BOOKS AND SCHOOL SUPPLIES

As the Painting Contractor
for the Centennial Addition
Brookville Public School

WE ARE PLEASED TO PARTICIPATE IN
CONGRATULATING THE SCHOOL BOARD
ON THE OFFICIAL OPENING ON
OCTOBER 27, 1967.

TERRY MARTINI
PAINTING
R.R. 3 - Guelph

Adding Our
Congratulations

TO THE PUBLIC SCHOOL BOARD
OF NASSAGAWEYA
UPON THE OPENING OF THE
CENTENNIAL ADDITION TO THE
BROOKVILLE PUBLIC SCHOOL.

FRAN'S
Dependable Construction Ltd.
236 Gordon St. - Guelph

**ELECTRICAL
CONTRACTORS**

Program

Program for the official opening of Brookville Public School begins at 8:30 p.m. Friday night at the school auditorium, and the opening will be followed by refreshments and a tour of the school for all the guests.

Prior to the program, the board is hosting invited officials to a dinner in the library room. Girls of the home economics class are helping prepare the dinner for the occasion.

Robert F. Bornhold, Regional Superintendent of Education for the Midwestern Ontario Area and a former school inspector in Halton County, will preside at the opening. Principal Kenneth F. Trowbridge will introduce the staff. Among those scheduled to participate are Nassagaweya Reeve and Halton Warden William J. Coulter; the township's three ministers Rev. David Nicholson, Rev. P.H. Finley and Rev. R.F.E. Jeffares; school board members Horace Blyth, J.R. McPhail, and A.H. Gibson; and the school's senior choir.

AS SUPPLIERS OF STRUCTURAL STEEL -

**Ferro Structural Steel
(Toronto) Ltd.**

AND

Halton Steel Joists
42 Armstrong Ave., Georgetown

• ARE PLEASED TO JOIN IN
CONGRATULATING THE BROOKVILLE
PUBLIC SCHOOL UPON THE OPENING
OF THEIR FINE CENTENNIAL
ADDITION.

LANDSCAPING
AT THE
**BROOKVILLE
PUBLIC SCHOOL**
BY THE
**DUTCH MILL
NURSERY**

R.R. 3 - Guelph 822-9806
PETER KEMPERS

We are pleased to see the Centennial
Addition to Brookville Public School.

We offer our Best Wishes
on the Official Opening.

WALKER'S

**NEW AMAZING OZITE
INDOOR-OUTDOOR CARPET**

MADE WITH VECTRA OLEFIN FIBRE

A carpet **PROVED DURABLE** enough for outdoors, attractive enough for indoors. Vectra fibre, shrugs off rain, sleet or snow, won't rot or mildew, resists grease, acid and virtually all household chemicals, is non-static and non-allergic. Vacuums clean inside, hoses clean outside. Dries fast, too!

Ideal for patios, kitchens, rec rooms, docks and boats, terraces, bedrooms, porches, station wagons, bathrooms or anywhere you wish to put it.

EASY TO INSTALL

Ozite indoor-outdoor carpet comes in widths nine feet wide and four feet, six inches wide. Buy any length you need. Cuts easily with sharp knife or scissors to fit any shape. Lies flat, will not curl.

COMES IN BEAUTIFUL DECORATOR SHADES TO SUIT ANY COLOR SCHEME. TERRACE CARDINAL, TERRACE BRONZE, TERRACE GREEN, AVOCADO, OATMEAL, SAPPHIRE, ROYAL BLUE, BROWNSTONE, DARK GOLD. ALSO PRETTY PARTY PASTELS IN PEPPERMINT, LEMON DROP, ALICE BLUE, LIMEADE, ORANGE ICE AND TAFFY.

You can get Beauty, long Wear and ease of cleaning, all at the remarkably low cost of

6.95 sq. yd.

-- CONGRATULATIONS --
To the Ratepayers and Public School Board
of Nassagaweya Township.
WE ARE PROUD TO HAVE BEEN CHOSEN TO
INSTALL DRAPES IN THE BROOKVILLE
SCHOOL ADDITION.

WALKER'S

127 Wyndham St. N. - Guelph - 822-2420

THE GENERAL CONTRACTORS

**For the Brookville Public School
Centennial Addition**

EXTENDS CONGRATULATIONS
To the Public School Board of the Township
of Nassagaweya School Area

UPON THE OFFICIAL OPENING OF THEIR
CENTENNIAL ADDITION ON OCTOBER 27, 1967

IT HAS BEEN A PLEASURE TO SERVE YOU!

A. Battaglia Construction COMPANY LIMITED

127 FERGUSON STREET GUELPH, ONTARIO TELEPHONE 822-4171 (Area Code 519)