

## Bleak Moosonee destination for Ontario regional tour

Ontario's northland - which is full of promise despite its bleak outlook and drawbacks - was host for the September meeting of the Ontario-Regional Development Commission. The invitation was extended by the Northern Ontario Development Council and the Ontario Northland Railway.

The mayor left Toronto Sunday Sept. 24 at eight o'clock in the morning and returned at the same hour the following Wednesday.

As chairman of the Central Ontario Regional Development Commission, Acton Mayor Les Doby made the fascinating and unusual trip with other regional representatives.

"We were assigned a special train section," he explained, "comprising two sleeping cars and one auditorium car for meetings, and a private car was picked up at North Bay for a lounge car."

The group had four business meetings en route.

"We picked up members of our host council at Cochrane and the only other stop was at Otter Rapids, where we had a ten-minute break to view and record on film the vast hydro project here, which is best seen from the railway. Upon arriving at Moosonee at 3:20 p.m. Monday, we proceeded to the docks where Cree Indians waited with freighter canoes to take us over to Moose Factory Island."

Eleven men shared one of these unusual motor-driven canoes, which in drizzling rain had to detour a large sand bar to reach the historic island.

Moosonee is the end of the railway, and Ontario's first and only tide-water port is beginning to take shape.

The settlement is small, flanked by the big R.C.A.F. station there. One part of the town is the Indian Village.

During the season, hunters

from all over come to Moosonee on James Bay to bag the wild geese and ducks.

The Hudson Bay Company has been at Moose Factory since 1672. With the present Hudson Bay post there is a small museum in the ancient blacksmith shop, one of the oldest known buildings in Ontario. In the Anglican mission the picturesque church has holes bored in the floor to keep it from "wandering" during high water breakup in the spring.

The touring group viewed the generating plant at Moose Factory Island which provides steam heat through overhead pipes, up and down the few streets and into the homes, hospitals and other buildings.

"The flower beds at the Indian and Eskimo hospital were still a riot of color at this late date and so far north," Mr. Doby was surprised to see.

They later toured the S.A.G.E. installation and the R.C.A.F. radar base on the Pine Tree Line. About 100 are stationed there and live quite self-sufficient from the town.

Mr. Doby and his fellow-tour members were surprised to learn that if diagonal lines are drawn through Ontario, the extremest point of just slightly north-west of Kapuskasing! The northernmost point in the province is still 300 miles north of Moosonee. The north pole is 2,500 more miles north. If you travelled the same distance south, you would be in South America. At Moosonee you're south of England and on just about the same latitude as Berlin and Warsaw. But the great inland season of Hudson and James Bay act like giant refrigerators and their icy waters control the climate.

The only harvests there are from the rivers and the forests. What you see is the fading trail of the last great glacial age. However, it's considered that the land, compressed once beneath mountains of ice, is now slowly rising again.

It appears at first sight the land is worth little, but the group learned how drainage could provide agricultural land. Mining companies are currently exploring. Some dream of diamonds and oil.

As a potential port, Moosonee is within easy reach of Europe. There are 10 regional development councils in the province which sent representatives to the unique tour with the parent body.



MAN! WHAT A COUPLE 'A CREEPS -

### Will donate vases fill need at Manor

The Duke of Devonshire Chapter, I.O.D.E. held the October meeting at the home of Mrs. H. F. Holmes, Park St., the Regent Mrs. Lidias presiding. Reports were given on the annual tag day and it was gratifying to find that over \$165 had been

raised. Members were thanked for their efforts. Home and Abroad secretary, Mrs. Holmes, read a letter from headquarters asking for funds to buy a new x-ray machine for Korea. A donation was voted to be sent. It was noted that flower vases were in short supply at the Manor and it is suggested that each

member donate a vase to be brought to the next meeting for use in the Manor.

Swallowing your pride occasionally will never give you indignation.

### Quality B-A Products SAVE YOU MONEY

- Gasolines
- Motor Oils
- Diesel Fuel
- Fuel Oils
- Stove Oils
- Oil Burner Finance Plan
- 10 Years to Pay
- Small Carrying Charges
- Dependable Service

**THOMPSON FUELS LTD.**  
ACTON  
PHONE 853-2370 AFTER HOURS 853-2174

### Sincere Thanks TO ALL THE PEOPLE

Lending Assistance to the Chamber of Commerce During the Sportsman Show

ALSO A SPECIAL THANK YOU

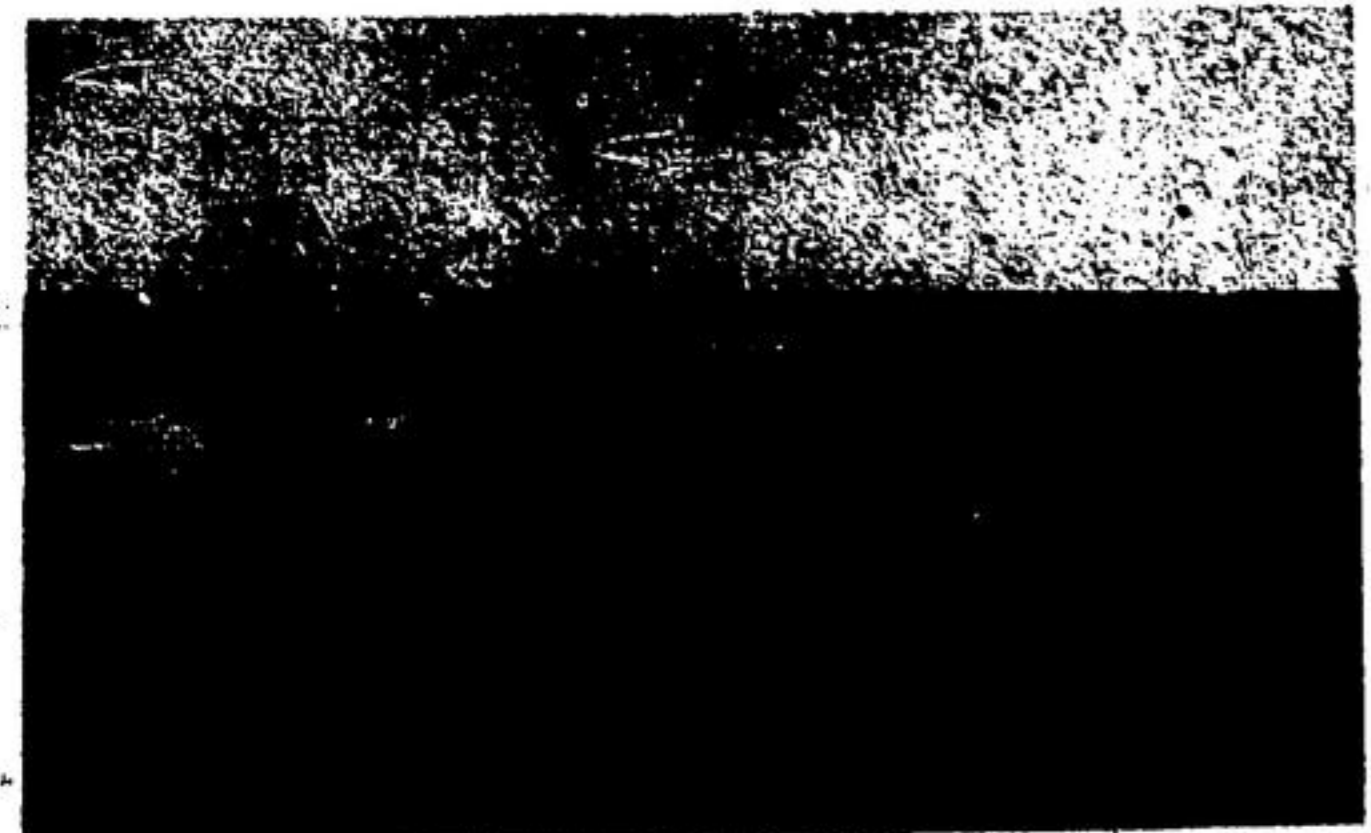
To Cecil and Bill Nelles for the use of their property and the following: Tyler Transport, Acton Rotary Club, Sports Corner, Maple Rock Shooting Range, Johnson Real Estate, Lamb Real Estate, Frank Heller & Co. and the Bank of Montreal.

ACTON CHAMBER OF COMMERCE

### New FRIGIDAIRE value-packed "economy 10"

- Model D-10C1, 10.0 cu. ft.
- Come see space-saving cabinet only 24" wide!
- Come touch full-width fruit & vegetable Hydrator.
- Compare Frigidaire door shelf for 1/2 gal. cartons.
- 58-lb. size Freezer Chest.
- Chill Drawer for meats.

**MANNING ELECTRIC ACTON**



BLEAK SHORELINE at Moosonee greeted regional development trippers who there embarked in motor-driven canoes for Moose Factory. Mayor Les Doby took the trip as chairman of CORDC.

## Harley to Halton

by Harry Harley m.p.

The Government has survived its first vote of non-confidence in the resumed Session. It did this fairly easily, with some assistance from two Members of the Opposition (one NDP and one Social Credit) and despite the vote of one Liberal against the Government. At the present time there are four vacancies in the House of Commons, and in effect this benefits the Government as the majority (3) of the vacancies are in the Opposition. The vote itself was of confidence in the Government and was based on housing policy. I should explain that a vote of non-confidence in the Government, while based usually on one subject, means non-confidence in their ability to govern. If the Government loses such a vote it does not mean the Government has to change its policy on that particular subject. It means that the Government has to resign and call a general election. In effect, therefore, a non-confidence motion is a call for defeat of the Government, and a general election. It is not a simple matter of criticism of any particular Government policy.

The Parliament of Canada has since gone on to study the Budget presented last June. The Minister of Finance noted that Expo has had a very favourable influence on our balance of payments and exchange position. In addition

tourist attractions during our Centennial celebrations have helped a great deal. The Minister has asked for a voluntary restraint on prices and costs. He has said the Federal Government is reducing its expenditures greatly and has asked for other levels of governments, and people generally, to do the same. He noted the Federal Government has reduced its proposed expenditures for the next year by \$650 million, and expects the savings will be increased further. The scale of borrowing of Provincial and Municipal Governments has actually exceeded that of the Federal Government this year and even more so last year. It is hoped other Governments will be enabled to reduce their expenditures as well. For the next week the consideration of the Budget will continue and will be punctuated by three votes, at intervals of two days, based on Opposition amendments to the Budget.

### Painting bee

The basement floors in the Y have been painted by the Y's Men Gary Bateman, Ric Coe, Ed Leatherland, Elmer Smith, Pat McKenzie and volunteer Wayne Wheeler.

**Pollock and Campbell**  
Manufacturers of HIGH GRADE MEMORIALS MEMORIAL ENGRAVING  
62 Water St. North GALT  
Telephone 621-7580

### Social evenings bazaar planned

The Legion Ladies' Auxiliary held their October meeting in the Legion Hall, President Mrs. G. James in the chair.

The ladies welcomed a new member Mrs. Mary Logan to the Auxiliary. A letter of thanks was read from the Runnymede Hospital for their donation in September.

There is to be a social evening in Erin on October 26 and another one in Brampton on November 29. Any member wishing to go is asked to get in touch with Com. Sylvia Foley, convener of the bus.

Members are asked not to forget the bazaar on October 21 and to support the conveners of the different tables.

After the meeting a social hour was enjoyed.

Glasses: Things which have an effect on vision - especially if they have been filled several times.

MILTON 878-3272 Show Times SUN. thru THURS 8 p.m. Fri. & Sat. 7 & 9 p.m.

**Roxy THEATRE**

THURS.-FRI.-SAT. OCT. 12-13-14

"CASINO ROYALE" - Color  
PETER SELLERS - URSULA ANDRESS  
"BOSTON BEANIE" - Cartoon  
SATURDAY MATINEE at 2 p.m.

SUN.-MON.-TUES.-WED. OCT. 15-16-17-18

"ALFIE" - Color  
MICHAEL CAINE - SHELLEY WINTERS  
ADMISSION RESTRICTED TO PERSONS 18 YEARS OF AGE OR OVER  
"READIN', WRITIN', 'RITHMETIC" - Cartoon

THURS.-FRI.-SAT. OCT. 19-20-21

"HOMBRE" - Color  
PAUL NEWMAN - DIANE CILENTO  
Recommended as Adult Entertainment  
"MAGOO'S LODGE BROTHERS" - Cartoon  
Saturday Matinee at 2 p.m.  
"WHITE FEATHER"

## ONTARIO GENERAL ELECTION - 1967

# NOTICE OF HOLDING AN ADVANCE POLL

Notice is hereby given that a poll for the Electoral District of Halton West will be open on Thursday, Friday and Saturday, the 12th, 13th and 14th days of October, 1967, from 8 a.m. until 5 p.m., and from 7 p.m. until 10 p.m. (9 a.m. until 6 p.m., and 8 p.m. until 11 p.m. Daylight Saving Time).

The polling place (or places) for the said electoral district will be located at

BURLINGTON -	PLACE: 2154 PARKWAY DRIVE PLACE: 5087 LAKESHORE RD. PLACE: 492 BEVERLEY DR. PLACE: 640 NORTH SHORE E.
NASSAGAWEYA -	PLACE: RESIDENCE, MRS. LAWRENCE SHARPE, R.R. 1, CAMPBELLVILLE
ACTON -	PLACE: 66 NELSON COURT, ACTON
ESQUESING -	PLACE: RESIDENCE, D. WILLIAMSON, No. 7 HWY. SILVER CREEK

for the purpose of receiving votes of the voters who expect on the day fixed for polling, to be absent from and unable to vote in the polling subdivisions for which their names appear on the lists.

The ballot box (or boxes) will be opened and the votes counted at 7 p.m. Standard Time (8 p.m. Daylight Saving Time) on the 17th day of October at the said places.

Dated at Burlington this 22nd day of September, 1967.

**D. H. McMILLAN, Returning Officer**