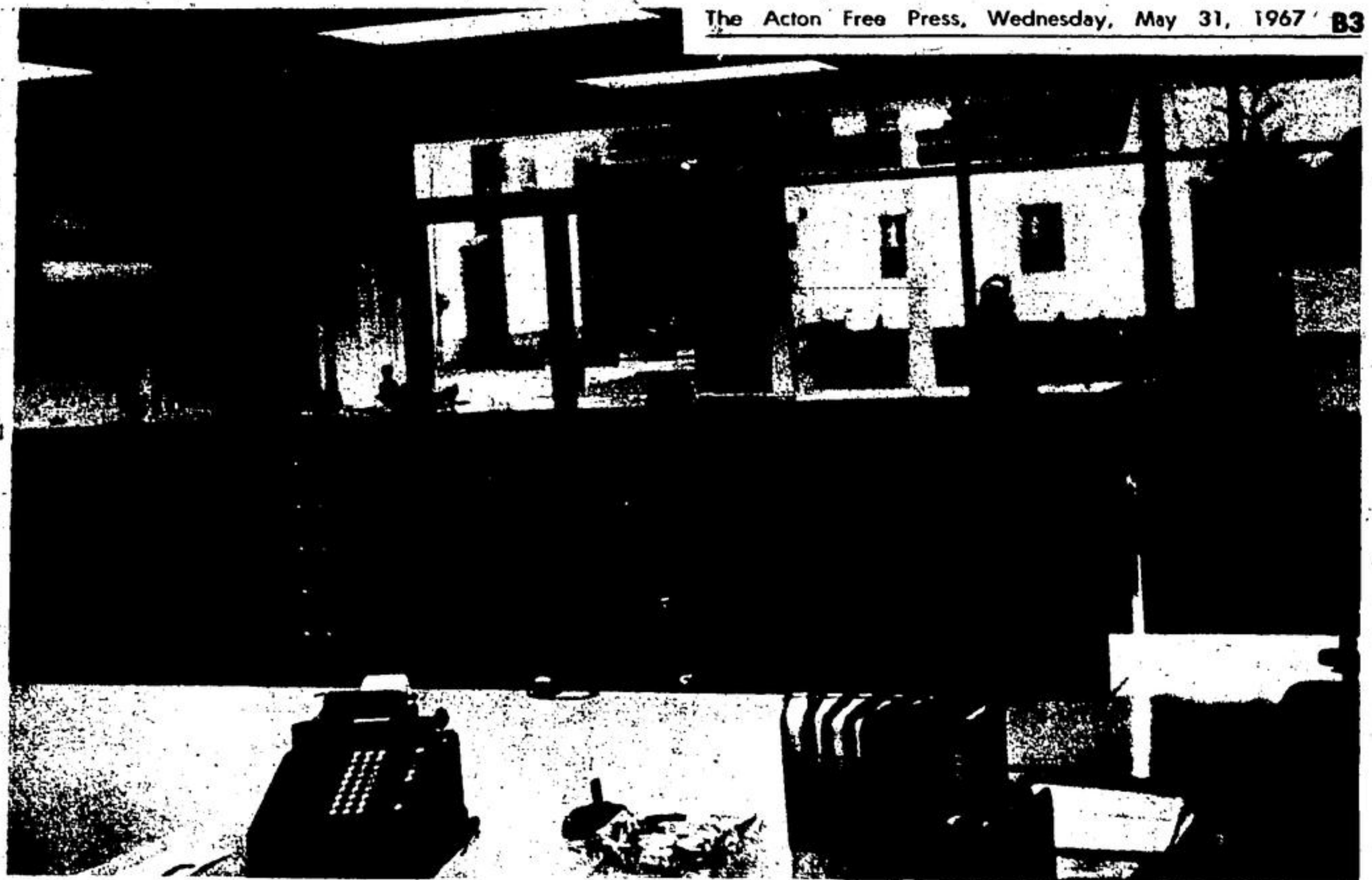




HYDRO EMPLOYEES Dorson Frizzell, superintendent Doug Mason, Herb Ritchie and Ken Hodgson have a well equipped workshop to use as a base for operation. (Staff Photo)

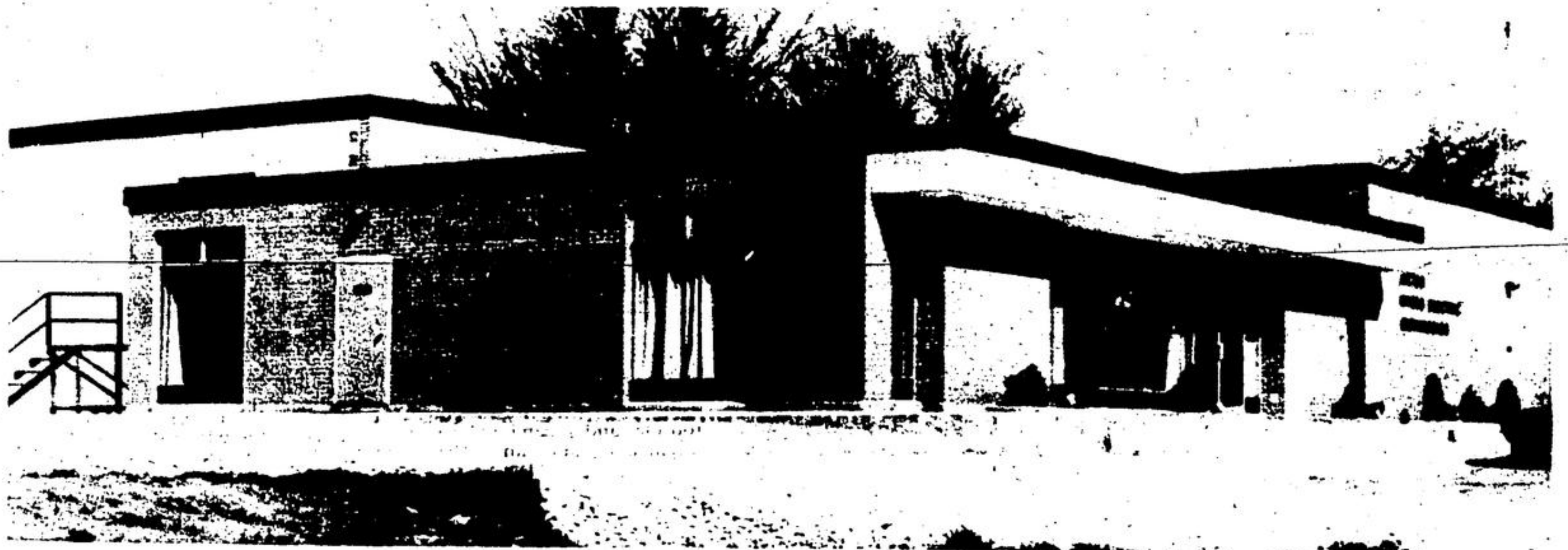


MAIN AND RECEPTION OFFICE of the new hydro building presents a well lighted and spacious interior to customers in keeping with the decor of the building. (Staff Photo)

Official opening of new hydro building Saturday ...Chairman of Ontario Hydro to speak



MANAGER'S OFFICE, like the rest of the new building, presents a quiet haven for conferences away from the clutter of machines in the main office. (Staff Photo)



Administration, service building simple, efficient

The new hydro building combines a number of the latest architectural and structural developments for functional simplicity. Particular attention has been given to both the present and future needs of an expanding system. It provides office and service facilities under one roof for effective operation and control.

The office provides 2,100 square feet of electrically heated accommodation with individual heat controls in each office. A major feature of the office is a machine room which restricts the noise level in the general office.

The board room provides ample space for commission meetings with a table for the

press representatives.

The service section of the building provides 3,460 square feet of space on three levels. It contains a meter shop and stores department, as well as the superintendent's office. Storage space is provided around the sides of the garage so that trucks may be loaded more easily.

The four bays in the service area provide housing for commission vehicles and space for working on heavy equipment. Heat is provided electrically by forced air heaters that can be controlled in each work area.

The building is basically cement block construction with brick facing on the front and

sides. Lighting is provided by recessed fluorescent lights, supplemented by automatically controlled outside floodlights.

Architecture was by Donald E. Skinner, architect, Port Credit. Construction was carried out by Whitney Construction Ltd., Brampton.

Grand Opening

Acton Hydro Electric Commission
extends an invitation to the
General Public to attend

THE
OFFICIAL OPENING
OF THE
NEW COMMISSION BUILDING

43 ALICE STREET, ACTON
SATURDAY, JUNE 3
AT 3.45 P.M.

-- DISPLAYS TO BE SEEN --
-- COFFEE SERVED --

E. G. TYLER,
Chairman



HYDRO EMPLOYEE NEWT HURST looks over his accounts in the new building. Newt reads meters for the Commission. (Staff Photo)

P.U.C., hydro chairmen

- | | |
|----------------------------------------------------------------------------------------------------------------------------------------------------------------------------------------------------------------------------------------------------------------------------------------------------------------------------------------------------------------------------------------------------------|------------------------------------------------------------------------------------------------------------------------------------------------------------------------------------------------------------------------------------------------------------------------------------------------------------|
| <ul style="list-style-type: none"> • P.U.C. and Hydro chairmen, since 1928: • E. J. Hassard — 1928. • E. T. Thetford — 1934. • L. G. King—1927, 1929, 1935. • B. G. Arnold — 1936. • R. J. Kerr — 1930, 1931, 1932, 1933, 1937, 1938, 1939. • C. M. Hansen — 1940, 1941, 1943, 1946, 1947, 1948, 1949. • Mac Symon — 1942. | <ul style="list-style-type: none"> • I. R. MacArthur—1944, 1945, 1950, 1951, 1952, 1953. • Dr. Frank Oakes — 1954, 1955, 1956. • J. J. Stewart — 1957, 1958, 1959. • E. G. Tyler Sr. — 1960, 1963, 1964, 1965, 1966, 1967. • G. W. Beatty — 1961, 1962. |
|----------------------------------------------------------------------------------------------------------------------------------------------------------------------------------------------------------------------------------------------------------------------------------------------------------------------------------------------------------------------------------------------------------|------------------------------------------------------------------------------------------------------------------------------------------------------------------------------------------------------------------------------------------------------------------------------------------------------------|



MACHINE ROOM in the new hydro building is soundproof which restricts noise seeping through to the general office. (Staff Photo)