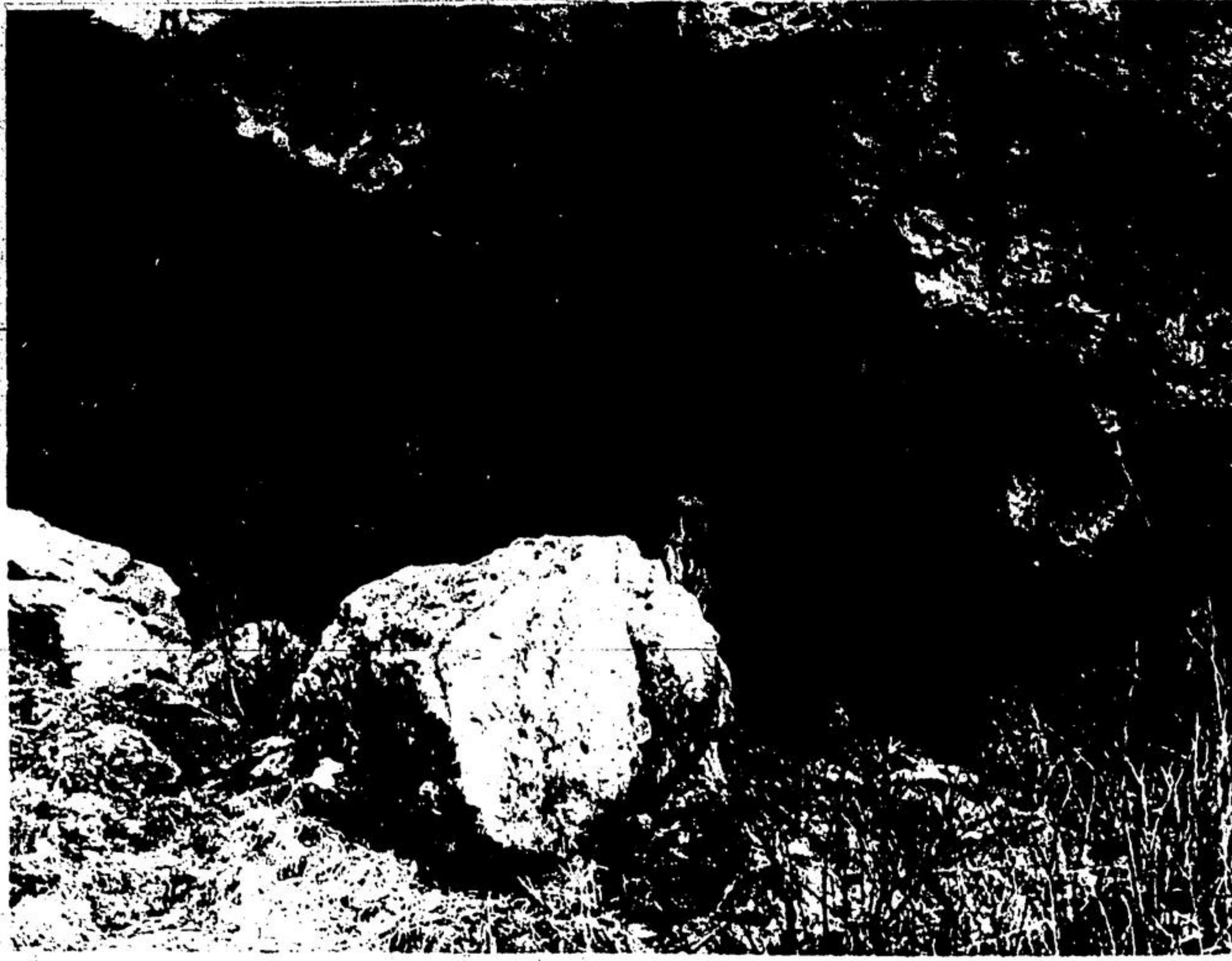




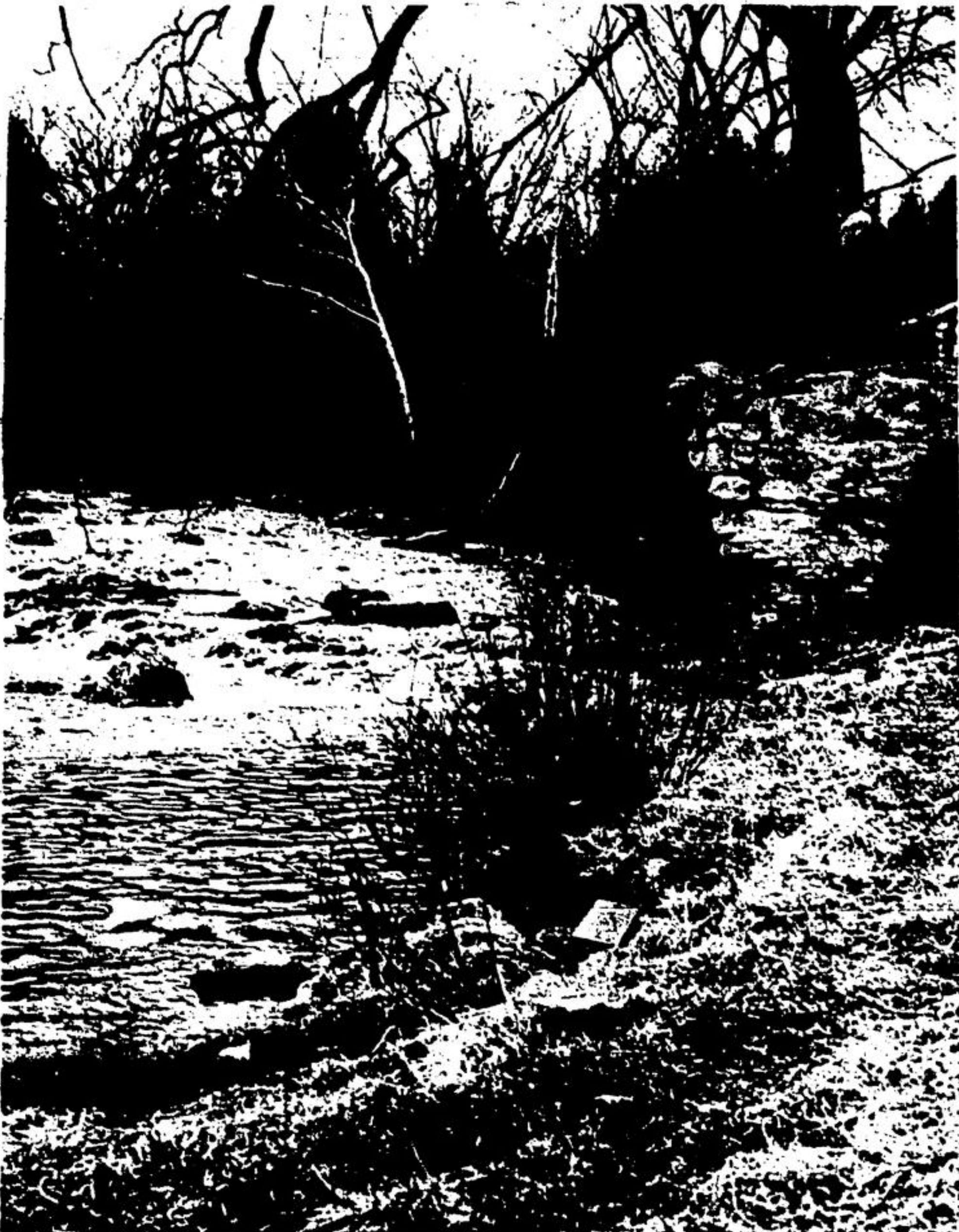
THE NOTCH which takes you into the almost perfectly cylindrical pot-hole called "The Devil's Well" is a geographical phenomenon common to the Rockwood area. Here one visitor examines the well's only entrance.



ONE OF THE FIRST SIGHTS one sees on Valley Road in Rockwood is the awesome and eerie entrance to a cave which is reputed to burrow deep into the bowels of the earth. The caves and rocks have attracted rock hounds and geologists interested in unusual rock formation. The large rock at the entrance probably fell from the cave ceiling.



VISITORS TO "The Devil's Well" will find others have been here before including a well known world visitor called Kilroy. Snow still lies at the bottom of the large pot hole much like lime in the bottom of a kettle.



BROWN, DEAD GRASS and bare branches on the shore of the rock-strewn Eramosa River, will soon wear bright spring vestments. Tables of limestone rock jut like promontories into the water which joins its big sister, the Speed, in a confluence near Guelph. Both are tributaries of the Grand.

Free Press Feature Page



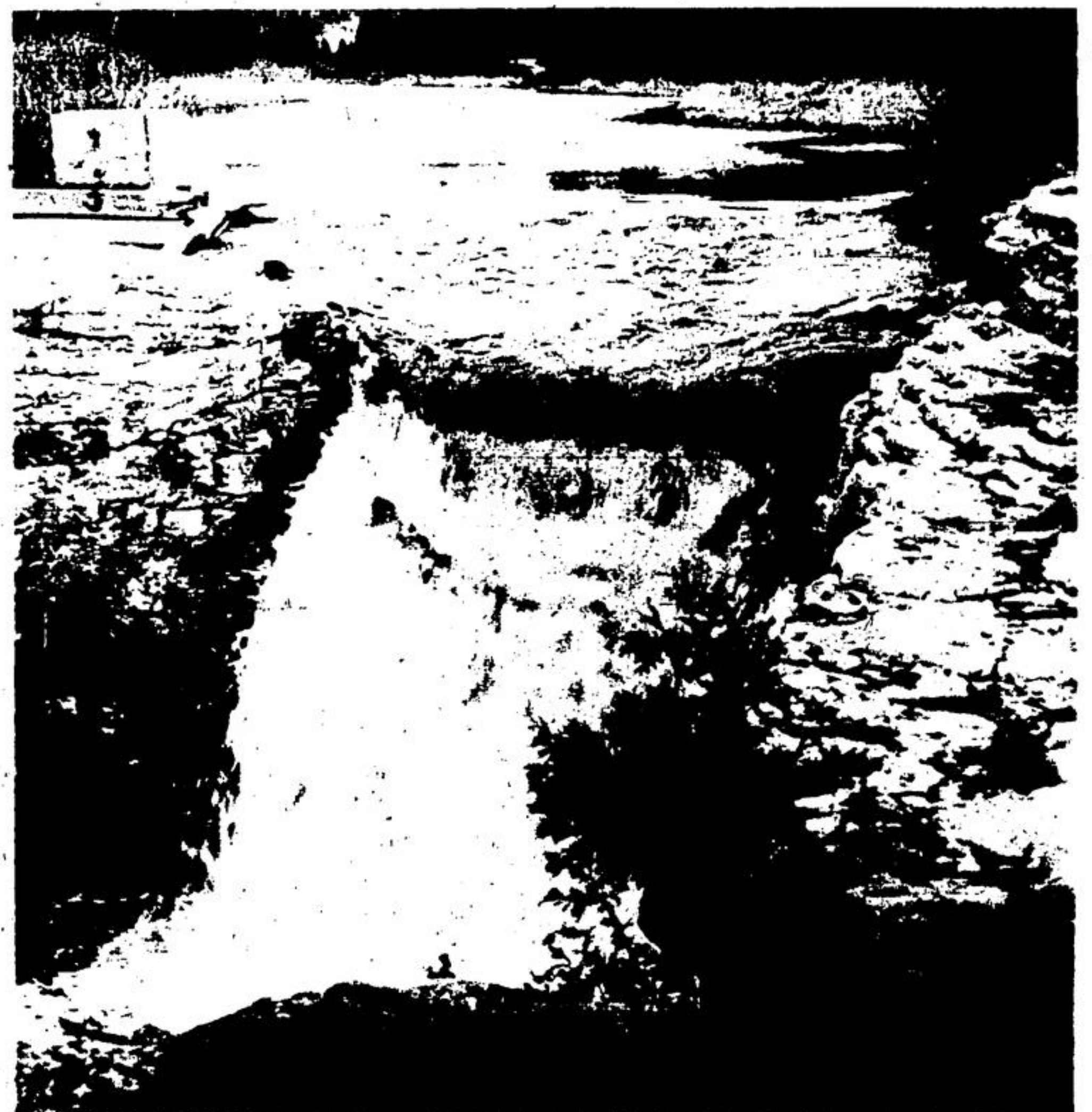
ESTABLISHED THE YEAR Canada was born, the old Harris woolen mills, once a thriving industrial establishment which dominated the river valley, are now burnt-out concrete and rock skeletons.

(Staff Photos)



THE VALLEY'S winding road follows the sparkling river, past towering cliffs and perfumy pines, ending up at the charred skeleton of the old mill. How green will the valley be when spring makes her grand entrance in a few days.

**Spring
on
the
Rockwood
Rocks**



THE RIVER IS QUIET and almost like a rippled mirror until it reaches the site of the old mill when it suddenly plunges over the edge of a small precipice into a boiling pool of foam in which brown trout lurk. The plummeting waters once supplied power to turn the heavy machinery of the old mill.

When you think of GIFTS think first of a

FRIGIDAIRE DISHMOBILE

Wide selection of models to choose from!



MANNING ELECTRIC
853-2950

MANURE COMPOST

WEED FREE — STEAM STERILIZED

- Lawns
- Gardens
- Shrubs

CASH AND CARRY

McNAIR MUSHROOM FARM
LIMITED

25 Highway 853-2759