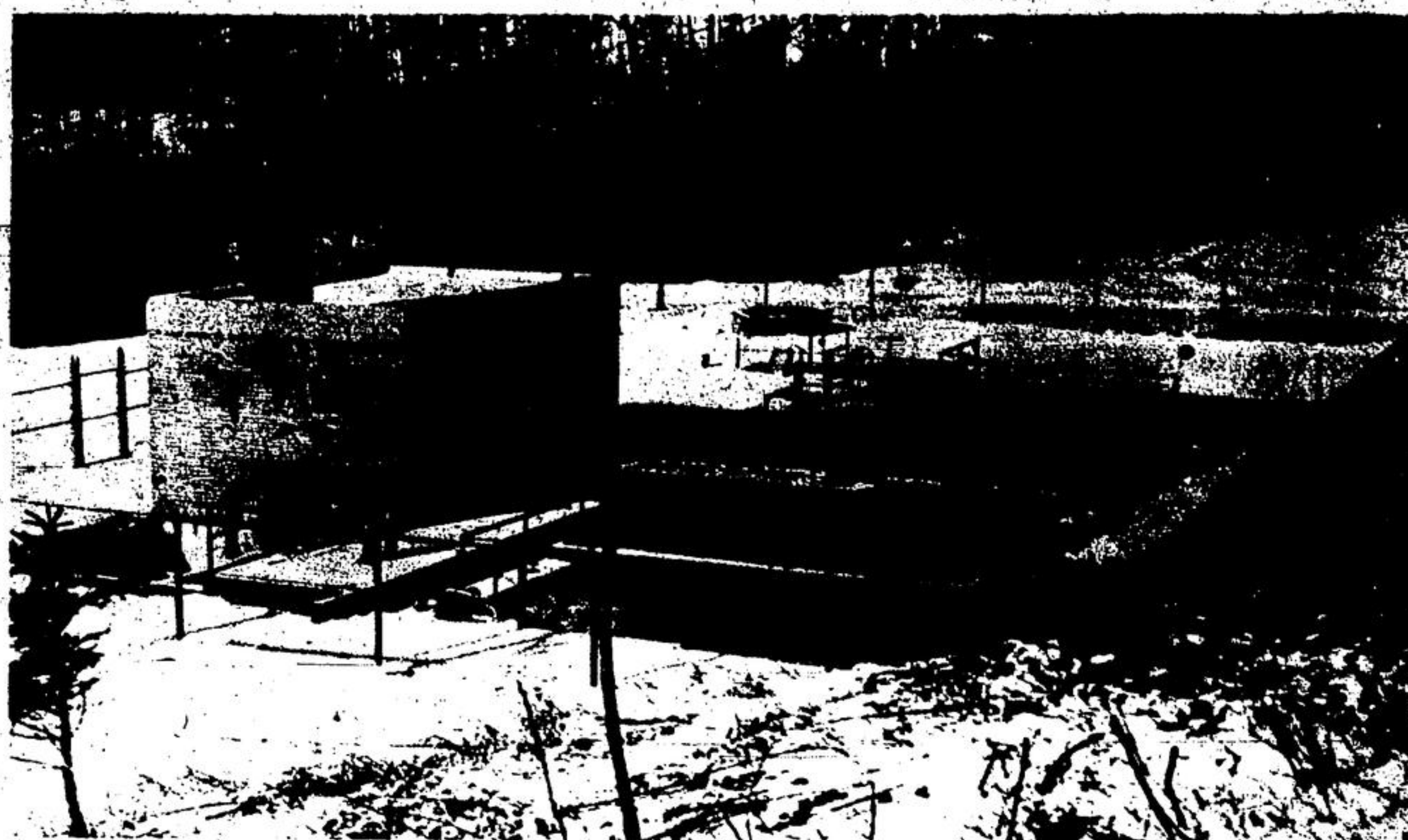




OVERFLOWING ITS BANKS along the marshy estuary, the Black Creek is a true harbinger of spring. Ice encrusted roads will soon warm in the sun and don their green vesters.



DUE FOR AN ADDITION soon the town sewage plant sits out of place in nature's scheme of things. bleakly in the forest enshrouded valley, a utility seemingly



ONLY A HILL AWAY from the refuse of the town dump, a stand of fragrant pines in between, this area presents a quiet and peaceful picture.

The Acton Free Press

Ninety-Second Year.—No. 38.

ACTON, ONTARIO, WEDNESDAY, MARCH 22, 1967

Second Section.

CAMERA CONTRASTS

The area around the town dump and sewage plant provides a study in contrasts for the Free Press photographer on a bright winter morning recently. Crows were holding a caw-cus and thousands of other birds whistled shrilly in the frosty air. The evil-smelling dump with its attendant smoke is surrounded by natural beauty and the sewage plant, due for an addition soon, nestles primly in the valley. Nature will soon awaken from its long winter nap and the debris of winter will be covered by verdant foliage.



SORE SPOT FOR RESIDENTS of the east end, the town dump sends smoke into the atmosphere and pollutes the air with evil smelling odors. Council hopes this area will soon revert to a beauty spot in keeping with its surroundings.

NOTICE

TO EMPLOYERS AND EMPLOYEES IN AGRICULTURE AND HORTICULTURE

UNEMPLOYMENT INSURANCE WILL, AS OF APRIL 1st, 1967, COVER EMPLOYEES OF

FARMS RANCHES NURSERIES
GREENHOUSES FRUIT, VEGETABLE,
FLOWER GROWERS.



EMPLOYERS

ASK FOR THE PAMPHLET—If you have not already received a pamphlet describing your obligations as an employer under this new programme, obtain one immediately from the Unemployment Insurance Commission.

REGISTER AS AN EMPLOYER—As soon as possible you should register at the nearest office of the Unemployment Insurance Commission. This is important because unemployment insurance is compulsory if you hire workers.

LICENCE TO PURCHASE STAMPS—After registration, if you have insurable employees the Commission will send you a licence to purchase unemployment insurance stamps and additional necessary information as to the insurability of your employees, contributions to be paid, how to affix stamps in your employees' books, records you must keep, etc.



EMPLOYEES

FIND OUT IF YOU ARE INSURABLE—Consult your nearest Unemployment Insurance Commission office to find out if you are insurable. Under the programme, some employees are not insurable.

SOCIAL INSURANCE NUMBER—Every insurable employee must have one. Application forms can be obtained at Unemployment Insurance Commission offices and most Post Offices.

Complete the form and mail it to an Unemployment Insurance Commission office. There is no charge for it.

UNEMPLOYMENT INSURANCE BOOK—If you are insurable you are required to have such a book, which may be obtained from the nearest office of the Unemployment Insurance Commission. You simply have to give your full name, date of birth and Social Insurance Number. There is no charge for it.



GAUNT SKELETONS with wispy remnants of autumn leaves clinging to branches, the trees brilliant red cardinal punctuated the raucous chorus. Occasionally the sweet call of a caw-cus. Hundreds of crows assembled for the spring

Over 60 cubs at workshops in Georgetown on Saturday

Six Cubs of Acton's First A Pack joined in a pack conference at Knox Presbyterian Church in Georgetown with over 60 cubs of the Georgetown district. There were 8 workshops, in artist, carpentry, collector and guide, athletic, house orderly, toymaker, cyclist and first aid. The boys were taught how to take care of their bicycles and highway safety, the proper use of tools and what tools were used for and a demonstration was given of each.

There was an excellent display of weed collections and the boys were taught how to mount stamps. During the athletic workshop the boys went through the SBX plan. The boys made and kept a centennial-designed woggle at the toymaker workshop. The cubs' pencils sketched an Easter card at the artist workshop. House orderly taught the boys how to take care of their neckerchief and proper way of

answering a telephone message. A delicious lunch was on display of bacon, eggs, sliced tomato, toast, fruit and cookies. Bacon and eggs were shown as it is a meal to be eaten for breakfast, lunch or supper and a cub can easily prepare it.

During first aid the boys were taught bandaging and artificial respiration. There was an afternoon break when the cubs held a games session and there were games new to most cubs.

District Commissioner Norm Herbert, gave the boys a yarn explaining to them what they learn during their cub years will remain with them for life, even though they may not practice it until they are older. A delicious lunch was served by the Scout Mothers of the host church, Knox Presbyterian of Georgetown. This conference lasted from about 10 a.m. until 4 p.m. last Saturday, March 18.

"Flowers of Hope" campaign provides funds for retarded

There is a new revolution in public education for Canada's mentally retarded — "Flowers of Hope."

This year, Canada's Centennial, Canadian Retarded Children's Week and the "Flowers of Hope" program will be conducted from May 14 to 21 inclusive.

LEARN TO DRIVE

A Sante Fe, Mex. youth apparently had hareny in mind, but he overlooked one important detail — he didn't know how to drive! City police said the youth hopped into a parked vehicle at church parking lot, backed into one car and rammed another. Frustrated, he fled on foot, leaving the damage cars behind.

Through the program, Canadian householders will be receiving a "Flowers of Hope" message and gifts of flowers — the Cosmos which is Canada's Centennial annual flower.

These little folders are assembled by the mentally retarded for planting by those who receive them. Hoping that those who do will give a thought to the mentally retarded in their community. Most local Associations undertake the "Flowers of Hope" campaign as a fund raising project. The money raised through this campaign provides the local Association with the operating funds required to carry on their vital work on behalf of the mentally retarded in the area.

SAY IT WITH
EASTER FLOWERS
FROM
LAKEVIEW GREENHOUSE

ONE LOCATION ONLY

MILL ST. W. (AT GREENHOUSE)

853-2200

— Potted Plants — Lilies — Mums — Hydrangeas, etc.



UNEMPLOYMENT INSURANCE COMMISSION
GOVERNMENT OF CANADA