

### Skating Party, Y.P. Banquet Mission Band in Area's News

Del Francis Pattison received the sacrament of infant baptism on Sunday. He is the son of Mr. and Mrs. Derek Pattison of Guelph.

Rev. W. Leeman's sermon dealt with a healthy respect for tradition. Religion, believed in for hundreds of generations based on repentance and Christian duty to neighbors was adequate if not perfect. Pity the poor child who

is allowed to grow up a "free thinker" because the home has no solid pillars of conviction. He is laying the foundation for future neurotic problems.

Jesus was a respecter of tradition and civil authority. The Jewish people were burdened with trivial things. The emphasis was on laws instead of on God, the laws and the sanctuary should not be substituted for God.

Our religion should stress reverence for God, and respect for

people. There are no limits to love. Never say we have fulfilled the laws of love.

**Skating Party**  
Ebenezer Young People held a skating party at Acton Saturday night, followed by a social time at the home of Doris Moffat.

The Mission Band (Messengers) met on Sunday morning. Miss Kimberly Duffield made her first appearance in the nursery. Parents of small children are reminded that arrangements are

made for caring for the little ones during the church service.

The Sunday school teachers and officers met at the home of Mr. and Mrs. Horace Blyth on Sunday evening.

**Y.P. Banquet**  
Ebenezer U.C.W. catered for the Presbyterian Young People's executive banquet on Wednesday evening. The U.C.W. holds their regular meeting next Wednesday at the home of Mr. and Mrs. Wynne Dunbar.

Nominations for elders will be

### No Accidents

The first snowstorm of the season Friday made driving hazardous on the weekend. The warmth in the earth melted the snow on the roads, turning it to ice. However, there were no motor accidents reported to the police in town.

White Gift Sunday will be Dec. 13.

### Mutual Aid Members Tour Plastics Plant

Nominations of officers, a tour of Micro Plastics and a brief slide presentation on fire prevention highlighted the monthly meeting of Halton County Mutual Aid Fire Services Association in Acton Tuesday evening of last week.

Following a tour through the plastics firm, Acton firefighters hosted the visiting firefighters at the Fire Hall, where Harry Otter-

bein showed slides of the Acton brigade's fire prevention work. A discussion was held on procedures involved in filing reports on serious fires.

Nominations were held for 1965 officers of the Mutual Aid, and there were no opponents when Georgetown Fire Chief Erwin Lewis was nominated for president. Milton firefighter Alf Waddle for vice-president, and Oakville firefighter Gord Reid for secretary-treasurer. Elections will be held at the January meeting.

**LOBLAWS STORE HOURS:** — MILTON: Mon., Tues., Wed. — 9 a.m. to 6 p.m.; Thurs., Fri. — 9 a.m. to 9 p.m.; Saturday — 8:30 a.m. to 6 p.m.  
GEORGETOWN: Closed Mondays; Open Tuesday, Wednesday, Thursday, 9 a.m. to 6 p.m.; Friday, 9 a.m. to 9 p.m.; Saturday, 8:30 to 6 p.m.

# LOBLAWS

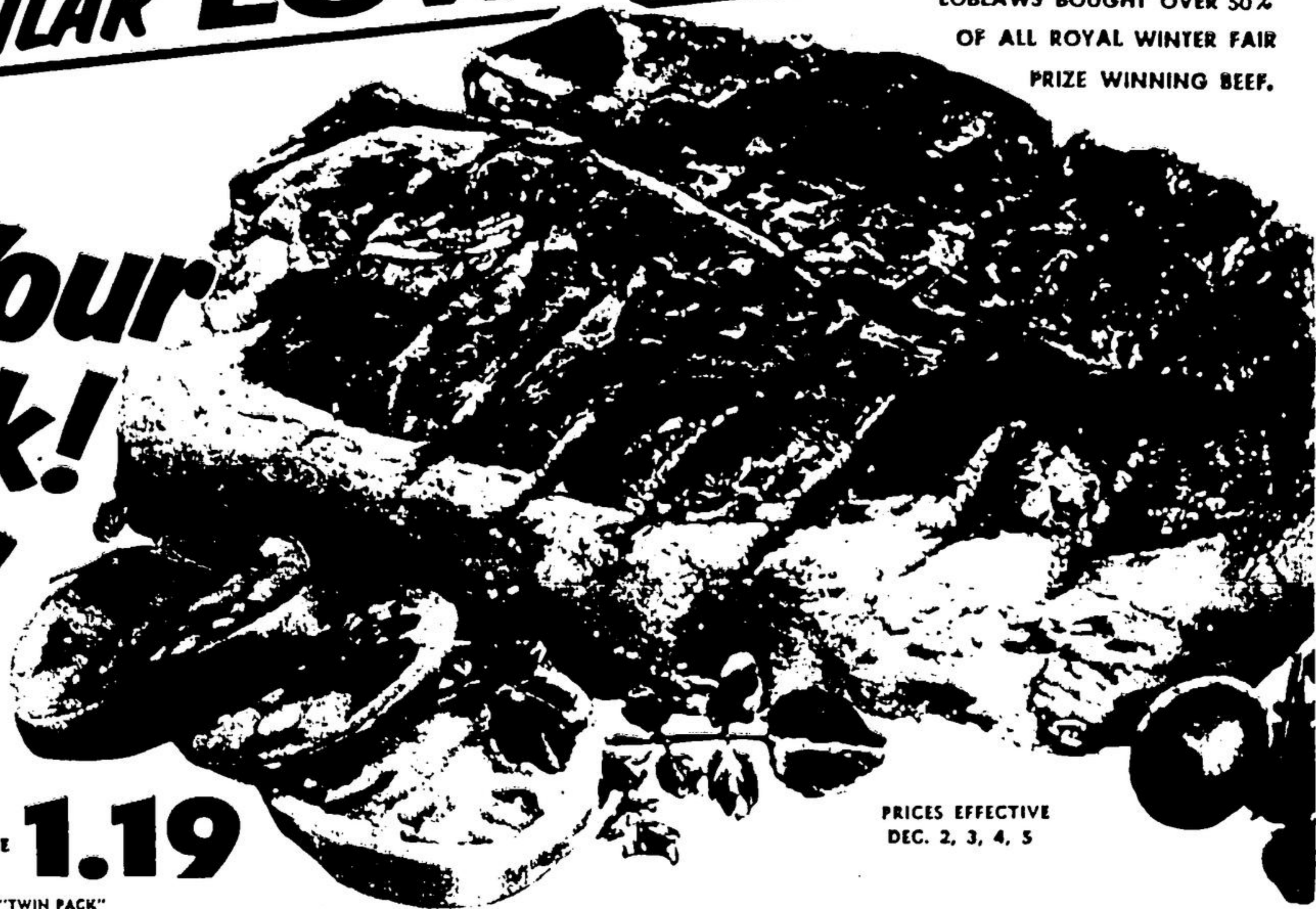
# Prize Beef

ROYAL WINTER FAIR

AT LOBLAWS REGULAR LOW PRICES!

LOBLAWS BOUGHT OVER 50% OF ALL ROYAL WINTER FAIR PRIZE WINNING BEEF.

## Double Your Money Back! Guaranteed!



If not completely satisfied with **any** fresh meat you buy from LOBLAWS

SPECIAL! 30c OFF REG. PRICE

**OMO DETERGENT** KING SIZE PKG. **1.19**

SPECIAL! PLAIN, SUGARED or CINNAMON

**LOBLAWS DONUTS** 2 17c PKGS. **39c**

SPECIAL! LIBBY'S **CORNED BEEF** 11 OZ. TIN **51c**

SPECIAL! HEINZ **KETCHUP** 2 15 FL. OZ. BTL. **61c**

SPECIAL! MCCORMICK'S **BISSCITS** 2 4 OZ. PKGS. **43c**

SPECIAL! CHOICE RED PITTED **Aylmer Cherries** 2 3 OZ. TINS **59c**

SPECIAL! LOBLAWS "KITCHEN PRIDE" **CHERRY PIE** EACH **49c**

LOBLAWS **PLUM PUDDING** 1 LB. IN FOL. **63c** 3 LB. **1.15**

SPECIAL! LOBLAWS PLAIN "TWIN PACK"

**POTATO CHIPS** 16 OZ. PKG. **69c**

SPECIAL! DOLE FANCY **FRUIT COCKTAIL** 2 10 FL. OZ. TINS **63c**

SPECIAL! MRS. HAMILTON'S **MINCEMEAT** 1 LB. PLAS. CTN. **31c**

SPECIAL! YORK CHOICE GOLDEN **CUT WAX BEANS** 2 15 FL. OZ. TINS **29c**

SPECIAL! CHICKEN CACCIATORI or VEAL PARMEAN **Mamma Mia Dinners** 2 11 OZ. PKGS. **99c**

LOBLAWS FAMOUS RICH DARK **Christmas Cake** 1 LB. **69c** 3 LB. **1.35** 5 LB. **1.97**

LOBLAWS DELUXE **FRUIT CAKE RING** 1 LB. EACH **1.39**

CHRISTMAS BAKING SUPPLIES

**AUSTRALIAN CURRANTS** 1 LB. PKG. **33c**

FARM BOY FANCY **BLEACHED RAISINS** 11 OZ. PKG. **35c**

GREEN OR RED **LIBERTY GLACE CHERRIES** 4 OZ. PKG. **25c**

**SHELLED BLANCHED ALMONDS** 4 OZ. BAG **45c**

**SHELLED ALMONDS** 4 OZ. BAG **39c**

**CUT MIXED PEEL** 4 OZ. PKG. **31c**

**CUT CITRON PEEL** 4 OZ. PKG. **35c**

**Australian Seedless Raisins** 1 LB. PKG. **33c**

**CUT MIXED FRUIT** 16 OZ. PKG. **59c**

**SHELLED WALNUTS** 4 OZ. BAG **29c**

SPECIAL! **MINCED BEEF** LB. **43c**

SPECIAL! LORI AWAY "SMALL LINK" **3 Little Pig PORK SAUSAGE** 53c

NO BONE — MINIMUM FAT **SPECIAL! BURN'S COOKED HAM** 3 LB. TIN **\$2.69**

"IDEAL TO HAVE ON HAND FOR ENTERTAINING, SNACKS, SUPPERS AND GIFT BASKETS"

SPECIAL! "Add Your Favourite Seasoning" **Minced Beef Pork & Veal** COMBINATION PACKAGE LB. **49c**

SPECIAL! ALORA PEPPERONI DELUXE **PIZZA PIES** SEE COUPON FOR "EXTRA STAMPS" 11 OZ. EACH **69c**

"WITH NATURAL JUICES FOR GRAVY" **SPECIAL! 5X COOKED ROAST OF BEEF** 3 LB. TIN **\$2.79**

"IDEAL FOR ROAST BEEF DINNER or HOT or COLD SANDWICHES"

SEE THE FINE SELECTION OF **LOBLAW PROTEN\* BEEF CUTS AVAILABLE** Denver - Manhattan - Belmont - Penthouse Niagara - Boston \*Reg'd. user of T.M. All completely boneless & easy to carve.

**ORDER YOUR CHRISTMAS TURKEY NOW** for BEST SELECTION

From Florida! White Marshseedless! **GRAPEFRUIT** 10 GOOD SIZE **69c**

From Florida! No. 1 Grade! **CORN on the COB** 5 LARGE EARS **39c**

From California! Crisp Green! **BRUSSELS SPROUTS** 2 POUNDS **39c**

EXTRA FANCY GRADE! **FRUITS FROM B.C.!** RED DELICIOUS **APPLES** 6 FOR **43c**

**GOLDEN DELICIOUS** 5 FOR **45c**

**ANJOU PEARS** 5 FOR **45c**

**GET YOUR CHRISTMAS TOYS AT LOBLAWS LOW PRICES!**

**LOBLAWS CHANNEL 9 TV Bingo** Monday Nights 8:30 p.m. PLUS DAY TIME BINGO 10:30 TO 11 A.M.