

The Acton Free Press.

Ninetieth Year—No. 8.

ACTON, ONTARIO, THURSDAY, AUGUST 20th, 1964

Second Section.

Limestone Quarries Expands: Build Toronto Yard

4,000 Tons Gravel Shipped Daily To New Toronto Marshalling Yard

STORY AND PHOTOGRAPHS BY DON RYDER

Acton Limestone Quarries has expanded its production area with a new marshalling yard behind Pincrest Speedway on No. 7 highway. City and suburban deliveries will be speeded up with the new yard where 4,000 tons of gravel are shipped from Acton daily.

The Toronto marshalling area is west of the C.N.R. marshalling yard and a special railway siding with 9,300 feet of track runs from Jane Street to No. 7 highway. A single lead-in track runs from Jane Street to the marshalling yard where a double track allows full or empty cars to be moved around. A company-owned diesel engine does the shunting of cars in the yard.

FEWER TRUCKS

With the opening of the new yard, deliveries to construction jobs in Toronto area have been speeded up and truck traffic from the Acton quarry to the city decreased.

The new marshalling yard is considered one of the most up-to-date in North America and many construction engineers from North America have already visited the area.

UNIQUE FEATURES

The new yard has many unique features. A new shake-down machine which attaches onto the railway car, shakes every last piece of stone out before the next car is moved into position. It also enables workmen to unload nine cars of clear stone every hour and 11 cars of "crusher run" in that time.

The main office is built in such a manner that the office man is elevated over top of the truck load and can make certain the proper grade of stone is being delivered to the customer while weighing the load.

When orders were filled from the Acton quarry, it took over 100 trucks travelling between Toronto and Acton daily. With the new yard about 15 trucks can handle orders in the area.

Beside cutting down on truck traffic on the highways, the Toronto yard enables the quarries to truck a constant flow of stone to the job site.

DIRECT LINE

Direct phones and a teletype machine keep the office man in contact with the Acton quarries as well as the main Scarborough office. He also has walkie talkies which he uses to contact the loading machine operator and the train engineer.

At the present time about two train loads of gravel are being shipped daily to the Toronto marshalling area. This represents 50 gravel cars per load. The special siding accommodates 60 train cars at a time and one engine is kept on the move shunting cars around.

When orders are received for a shipment of gravel, the office man alerts truck drivers and the loading operator and within minutes contractors receive the shipment on the site of the job.

When shipments went out from Acton, many times loads arrived in Toronto during heavy rainstorms although the sun was shining brightly here. Inspectors on the job wouldn't allow the gravel to be dumped and a return trip to the Acton quarries was made. Under the new system the weather problem has been eliminated.

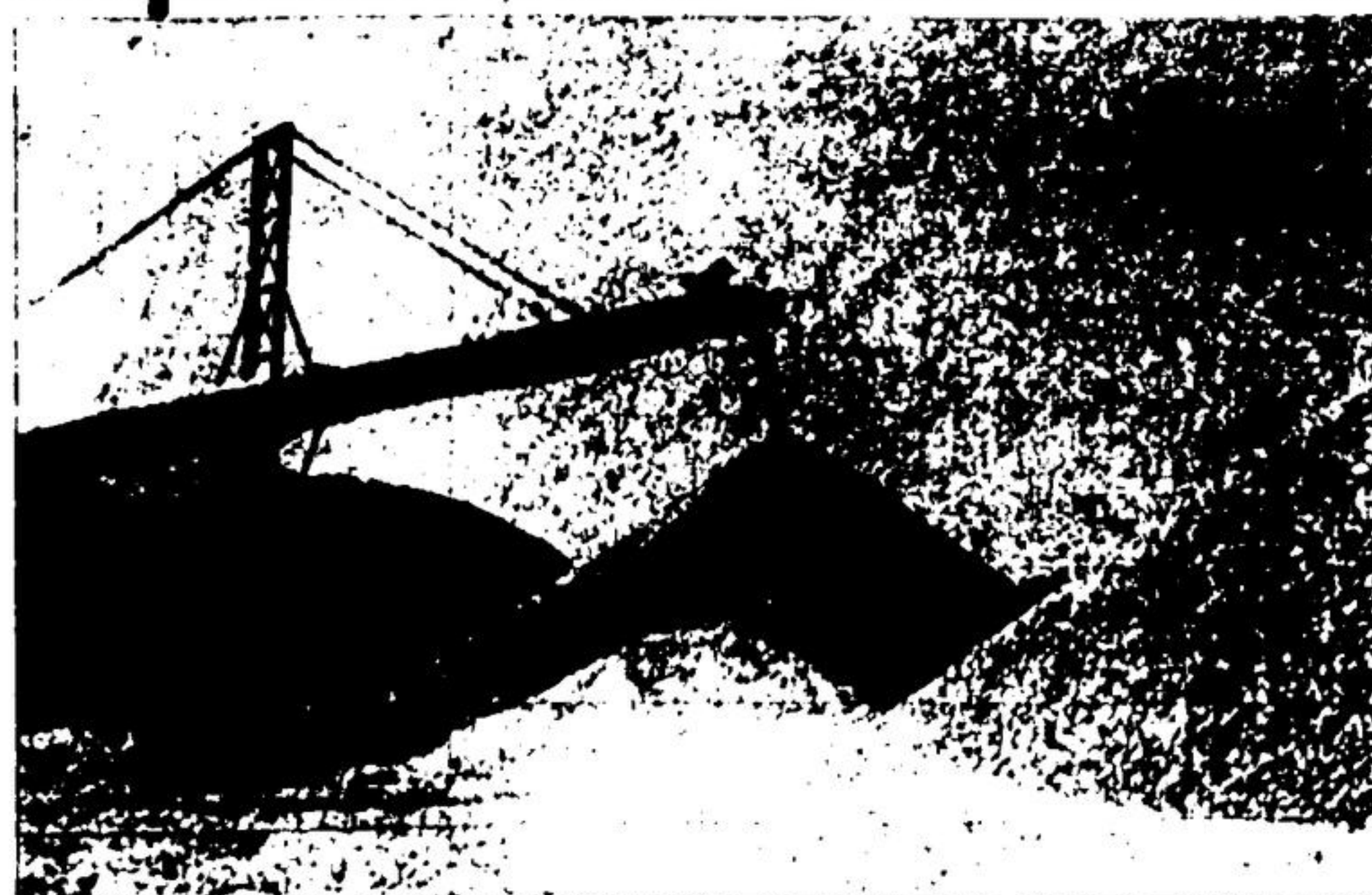
One of the main features for the town of Acton is the large sign posted just off Highway No. 7 indicating Acton Limestone Quarries. Other industrialists and motorists will be well aware there is a town named Acton!



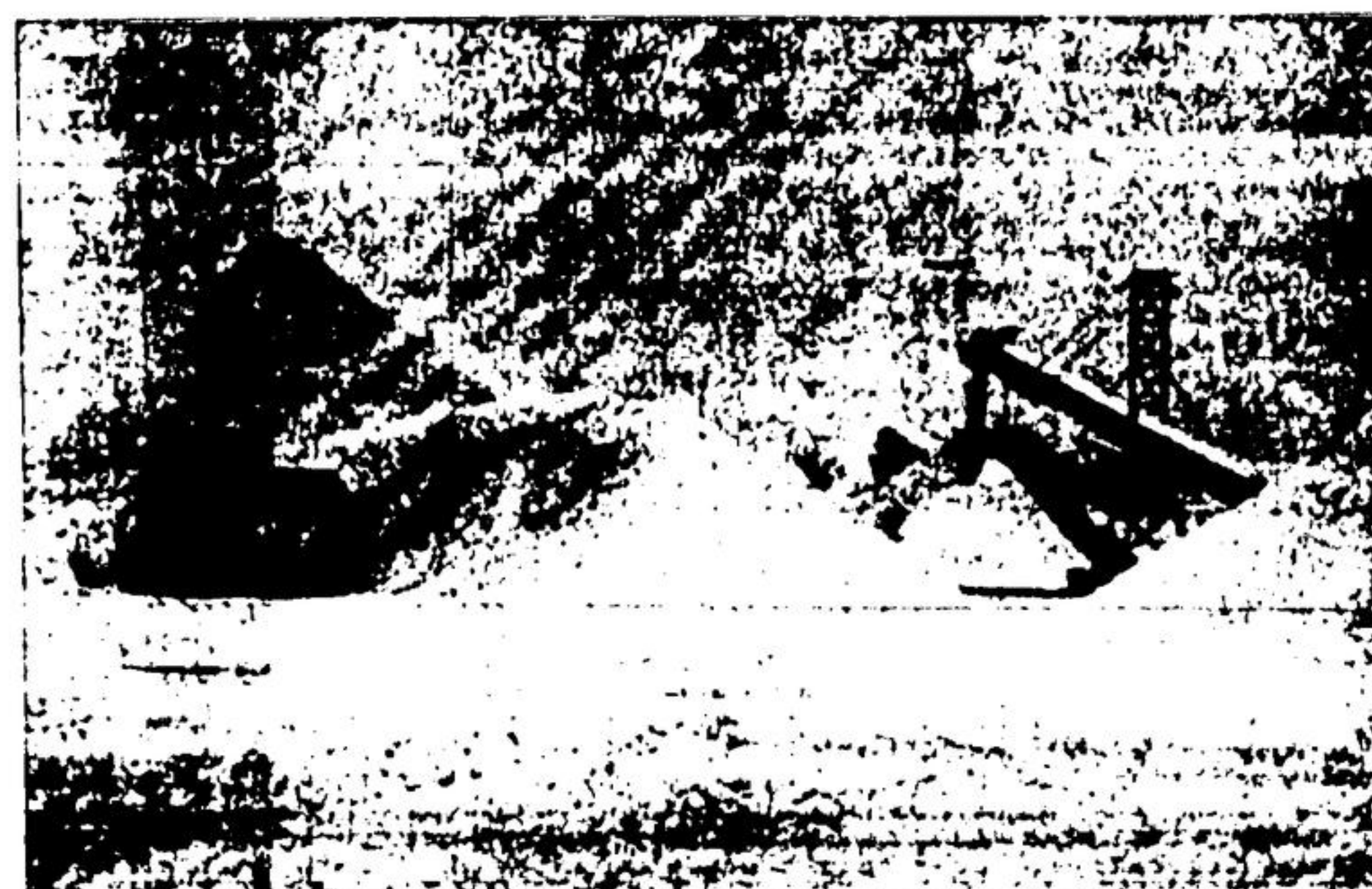
UNIQUE SHAKEDOWN unit clears all railway cars of gravel during the dumping process.



ENCLOSED CHUTE runs underground with conveyor carrying gravel to radial stacker.



RADIAL STACKER runs on single track to allow swinging in semi-circle to various piles.



FRONT END LOADER shifts stacked piles of gravel for easy loading on trucks.



LOADING TRUCKS for shipping is the final stage at the new marshalling yard in Toronto.

KEYS MADE WHILE YOU WAIT
Hinton's 5c-\$1 Store

DON S. BEXTON
JEWELLER
AGENT FOR
STOPP'S CLEANERS AND TAILORS
Milton Plaza — Milton, Ont.
Shirt Launderers
Alterations and Repairs
ONE DAY SERVICE
In before noon, pickup at 5:00 p.m. next day

Fred A. Hoffman
Optometrist
TA 4-2071
88 ST. GEORGE'S SQ., GUELPH

Don't get greater expenses for your home
WITHOUT UNBALANCING YOUR BUDGET
See
DENNY'S
Insurance Agency
"BILL and HAROLD"
39 Brock St. Acton, Ont.
PHONE 833-4130
about **SAFECO'S**
MONTHLY PAYMENT PLAN

BELL LINES

by L. G. Denby
your telephone manager



FARM EXTENSIONS

Farm families in the Acton area might want to consider the usefulness and convenience of having extension telephones in buildings other than the house. After all, it makes sense to have a telephone where you spend a lot of working time! Take the barn, for example. You can make important business calls without leaving your work — planning schedules of livestock shipments, ordering feed, taking orders or enquiries, checking up on deliveries,



and so on. And since the telephone rings in the house as well as in the barn, no incoming calls are missed. I suppose most people have come to think of extension telephones as belonging only inside the house itself. But actually they belong wherever they serve a need — and that includes in farm buildings.

ON STAYING WITH SCHOOL DAYS

Some young people may shudder at the thought of it (and blame me for throwing cold water on what was up to now a pleasant holiday), but next year's school term is just around the corner. I certainly hope that as many Acton students as possible are intending to return to complete High School, because this is certainly the minimum requirement today in order to have any satisfactory control over what kind of jobs will be held over the next forty + years. And that can be a mighty long time to regret not staying in school a few years! I hope that parents who grew up when times were different are aware of how much our society has changed and are "sold" on the fact that their children should be as fully equipped as possible before tackling the working world.

SINCERELY YOURS

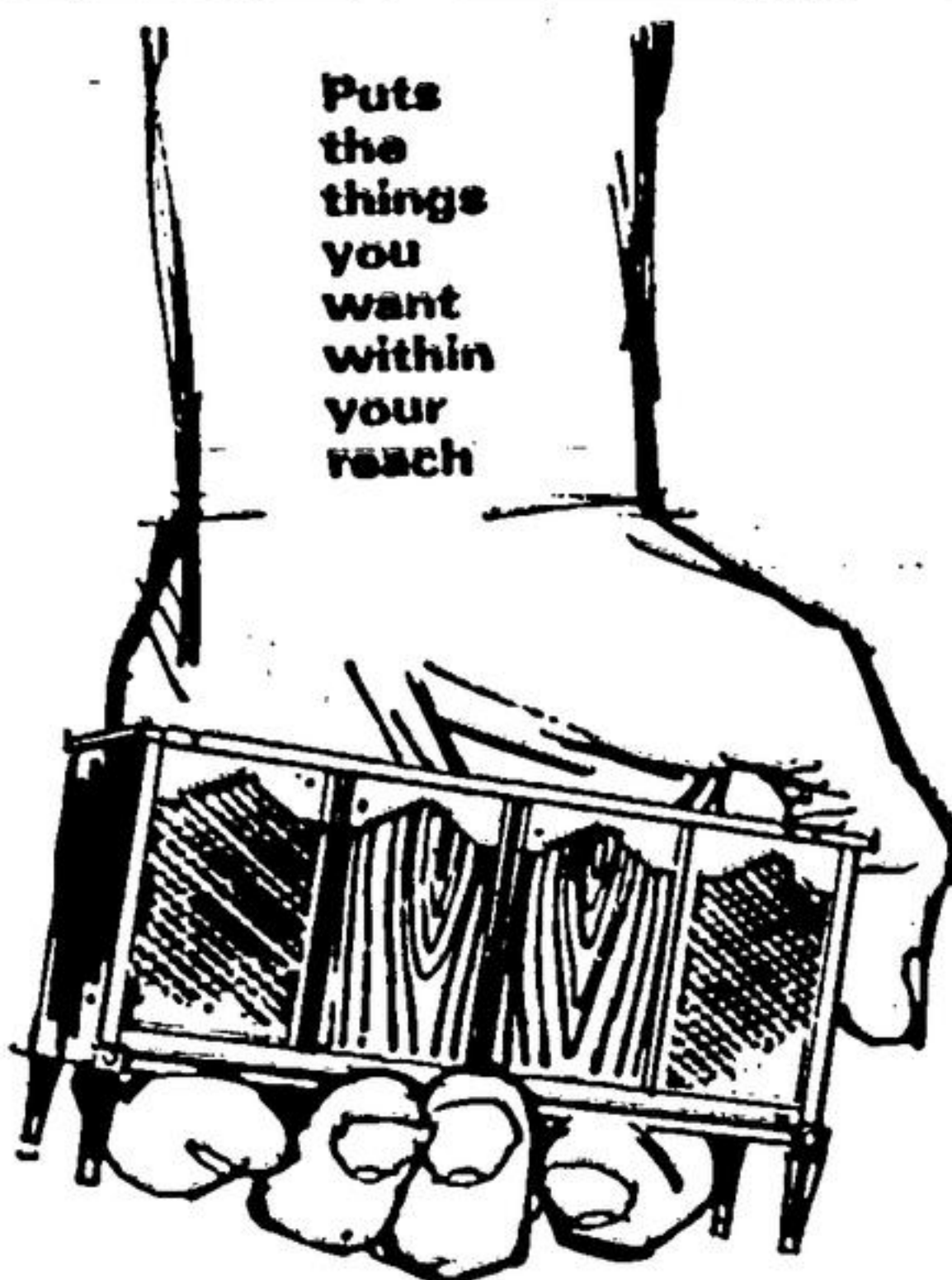
This one I can't vouch for because I wasn't there, but it's already given me ideas about how to close the next letter I write. It's about the origin of our word "sincere."

It appears that sculptors in ancient Rome used to repair their minor mistakes with wax, moulded so skillfully into the design that only an expert could detect the flaws. Pieces that were not patched brought higher prices than the repaired ones. To assure buyers of the quality of their purchases, dealers marked the undecorated pieces "sine cera".

That's the Latin for "without wax"!

Lloyd Stenby

Puts the things you want within your reach



BANK OF MONTREAL

Family Finance Plan



Bring all your personal credit needs under one roof

LOW-COST LIFE-INSURED LOANS

Acton Branch: EDWARD J. PRATT, Manager

...back to school
SHEAFFER'S
COUNT THE CARTRIDGE
CONTEST

1st Prize—Sheaffer Cartridge Pen & Pencil Set \$4.95
2nd Prize—Ball Pen and Pencil Set \$3.95
3rd Prize—Cartridge Pen \$2.95

HERE'S HOW!

Just guess how many cartridges in the Big Plastic Bubble on display, fill out the entry blank and deposit it in the Ballot Box. The three winners will be announced on Saturday, September 19th.

Winners of this contest will be eligible for Sheaffer's National Contest which closes September 30th.

ENTER THIS EXCITING CONTEST NOW!

DILLS STATIONERY

56 MAIN ST.

ACTON

833-2030