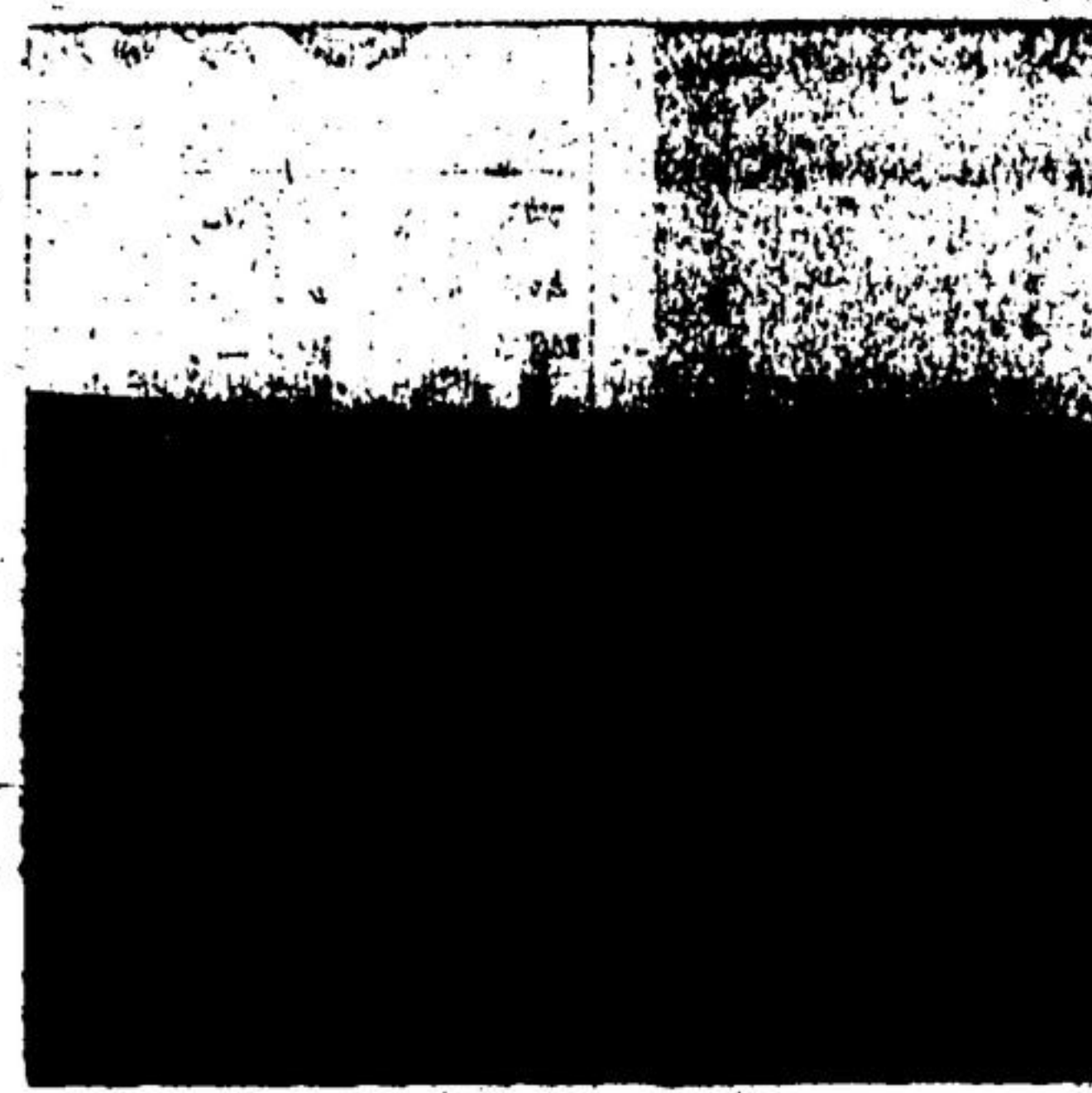




Striking beauty of fall colors is emphasized at the Esquesing Conservation Area pond.



Boy Scouts from Georgetown climb a wooded trail on the Bruce Trail nature walk near Milton.



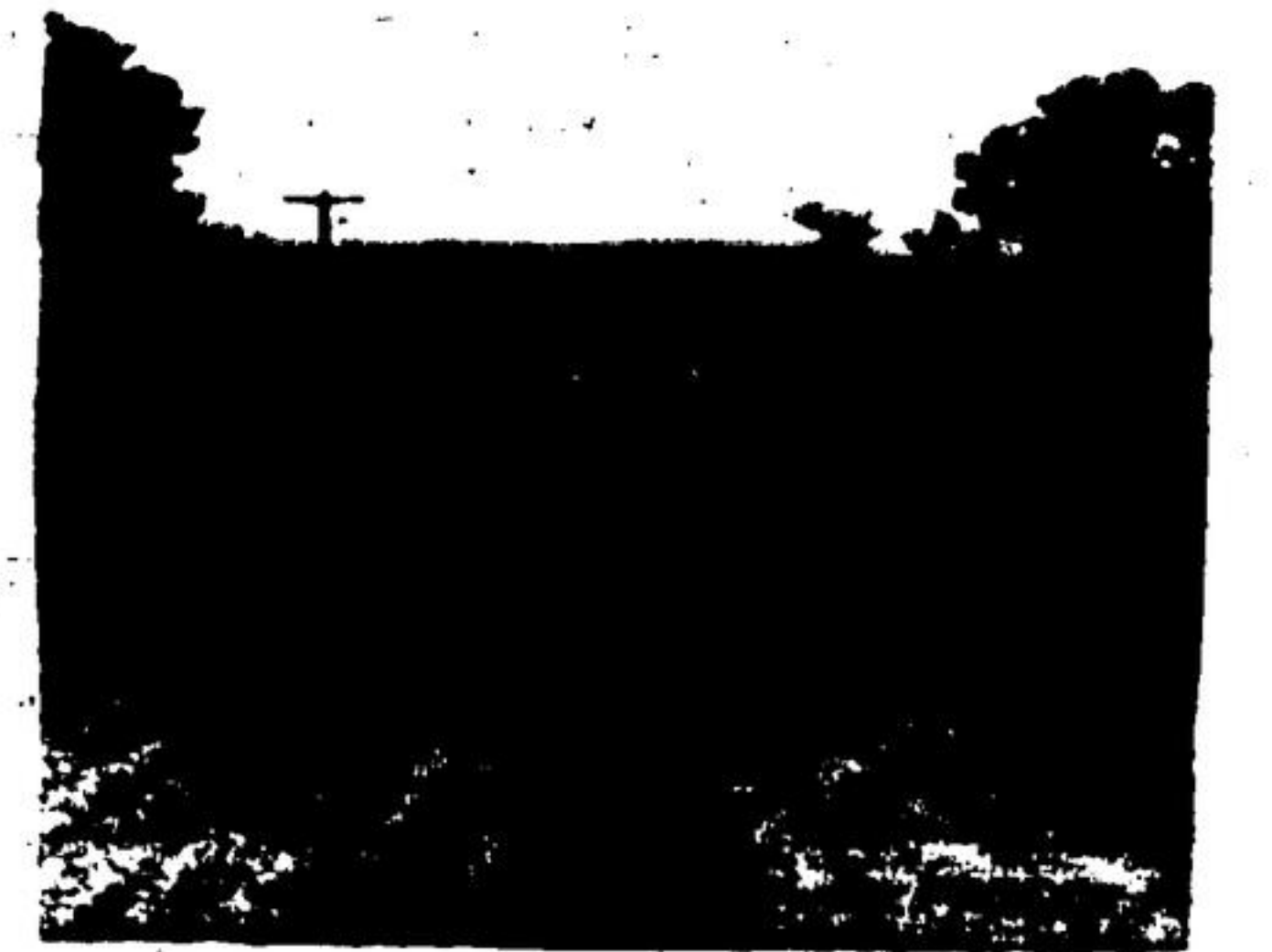
From the top of escarpment at Speyside, you get a good view as far as the lake on a clear day.



Probably the most beautiful tree-lined road in Halton is 10 Sideroad Esquesing, just east of Highway 25, below Speyside.



Watercress grows wild in this stream that crosses the Sixth Line north of the Beaver Dam area.



A view of the escarpment and Kelso Conservation Area from the mountain north of Highway 401.



A private pond owned by Ray Olan of Campbellville is a pretty sight you'll want to see.



Looking down from Five Sideroad, the Kelso Dam and lake spread in the background. That's 401 in front.

Along Creek Watershed Chart 32-Mile Fall Color Tour

Would you enjoy a scenic Sunday drive through some of southern Ontario's prettiest countryside, lush with colorful fall foliage, and resplendent in the beauty of escarpments, quiet rural roads and pretty ponds?

You can do it this weekend, on a 32-mile fall color tour, specially designed by The Free Press for its readers. And you don't have to wander far from your own back yard!

The tour is primarily a trip through the north-west section of the Sixteen Mile Creek watershed. But within the next two weeks autumn's colors will be at their peak and you'll see the wondrous colors of fall as you follow the trail.

Numerous Highlights

Highlights of the drive include visits to the Esquesing Conservation Area, the Kelso Conservation Area, a section of the Bruce Trail project, the Niagara Escarpment overlooking Milton, three ponds in the Campbellville area, the Beaver Dam area on Nassagaweya's Sixth Line, the escarpment at Speyside, and many other stopping-points of beauty.

If you're inclined to take such a tour at a 50-mile-per-hour clip just to say you've been there, an hour will cover the distance. But if you're interested in stopping the car and investigating, or if you want to pack a picnic lunch and eat it at one of the many excellent stopping places along the route, figure on spending anywhere from three hours to the entire day on the trip.

Don't forget to pack your camera and lots of colored film.

Not Complete

The tour is definitely NOT a complete tour of the 16 Mile Creek watershed. The section described below covers the Milton Heights, Campbellville, Speyside and Boston areas, while the watershed actually stretches north to near Acton and Georgetown, east to Halton's boundary, and south to Oakville, Bronte and the lakeshore.

If readers indicate an interest, a drive could be mapped through other sections of the watershed for a future issue.

Follow Mileages

The following are approximate mileages between the points of interest. Follow them closely if you don't know the area, and you won't get lost.

Our tour starts in downtown Milton but Acton drivers could start at Speyside and skip Milton altogether. (See map.)

Head north 2.6 miles on Martin St. and Highway 25 past the scenic mill pond, the Base Line, and Highway 401 to Five Sideroad Esquesing, also called the Campbellville Sideroad.

Turn left and drive 9 miles and turn right on the First Line at the Dufferin Quarry sign.

Follow the First Line north for 9 miles past the quarry entrance, and on the left you'll see a sign for Esquesing Conservation Area. Turn in the lane-way and about 100 yards inside you'll find a laneway cutting off to the right, where you can park.

Moore Bush

This property is the former John Moore bush area, with many trees centuries old. It was purchased by the 16 Mile Creek Conservation Authority for a forest conservation area, and a man-made pond 100 yards north from the laneway is a "must" for your trip.

Take a walk through the bush if you have time, it's a lovely spot full of autumn color.

Leaving the Conservation Area, turn (north) on the First Line and drive 3 miles to the entrance to the Molony farm. Keep to the roadway's extension and pass the farm laneway where you'll find a picnic table and parking.

Not highly recommended for people with bad hearts or weak legs, but a worthwhile trip for ardent hikers, is a trail leading straight up the side of the escarpment just north of this point. It winds through the edge of the bush overlooking the picturesque Molony farm, right up to the brow of the mountain, where a white sign at a "Y" in the trail indicate you have reached the Bruce Trail project.

Nature Trail

The Bruce Trail is a 280-mile nature trail through Ontario's most scenic countryside, beginning at Niagara Falls and heading north to Tobermory. A recently opened section stretches from Kelso Dam to Terra Cotta and this is one way (certainly not the easiest) to find it. Where the trail takes a "Y" here, the path to the left takes you down to Kelso while a right turn leads you off toward Speyside.

White blazes and arrows painted on the trees will help you keep on the route. The Bruce Trail people sincerely ask that you respect the private property over which the trail passes. Leaving the parking area at the end of the First Line, head

south for 1.2 miles back to Five Sideroad. Turn right and go 4 miles and turn left onto the Town Line between Esquesing and Nassagaweya.

Head south 7 miles to the intersection at Milton Heights, and turn right at the "No Exit" sign.

Kelso Area

Just 8 miles along this road is the entrance to the Kelso Conservation Area, a 400-acre public parksite including the Kelso Dam and an 80-acre lake, a swimming pool and children's wading pool complete with changehouse, the Halton County Museum located in the former Duff Alexander barn, and the Glen Eden Ski Club on the southern escarpment overlooking the Conservation Area. Admission is 50 cents per car, and there are plenty of picnic tables.

There is a back entrance leading out to Christie, but the gateway is usually closed weekends, so to get back onto the trail leave the way you came in, heading back out the sideroad 8 miles to Milton Heights.

Turn right at corner and head south for 1 mile to the Base Line Road at Milton Quarries. Turn right again and drive 1.7 miles to the Appleby Line. Just at the top of the mountain above the quarry, there's a good place to park your car and get a good aerial view of the town of Milton.

See Lime Kilns

From the Appleby-Base Line intersection turn right and head north 1.1 mile and down the winding hill into the village of Christie. On the right at the intersection you'll see the remains of a lime kilns that was a major



WATCH FOR SIGNS

Halton industry in the days gone by.

Turn left and drive 1.7 miles to the Guelph Line, then turn right and go 8 miles to the village of Campbellville. On your left is the Campbellville Pond, now owned by the Conservation Authority. On the right is a lovely private pond and Rainbow Trout hatchery owned by Ray Olan. (The Campbellville Pond is a public area open to visitors, but the Olan pond is private property.)

Turn right just past the ponds and head east along Five Sideroad to the Sixth Line of Nassagaweya, 2.7 miles from Campbellville. There are several points of interest along this road. Watch for a private pond on the right, owned by the late Con Toletzka, that was once a fish preserve owned by the Milton fishing club. At the Fifth-Five Sideroad corner is the southerly entrance to the Bruce Trail project, and between the Fifth and Sixth Lines watch for a good view of the Kelso Dam and lake.

Plenty to See

Heading north (left) on the Sixth Line drive 3.7 miles along a lovely rural road to the 15 Sideroad. Along the way you'll pass Birch Hills Golf and Country Club, Halton Crushed Stone, and the entrance to the beaver dam area. If you like watercress, watch for a tiny wooden bridge with a large pool of watercress on the right side of the road way.

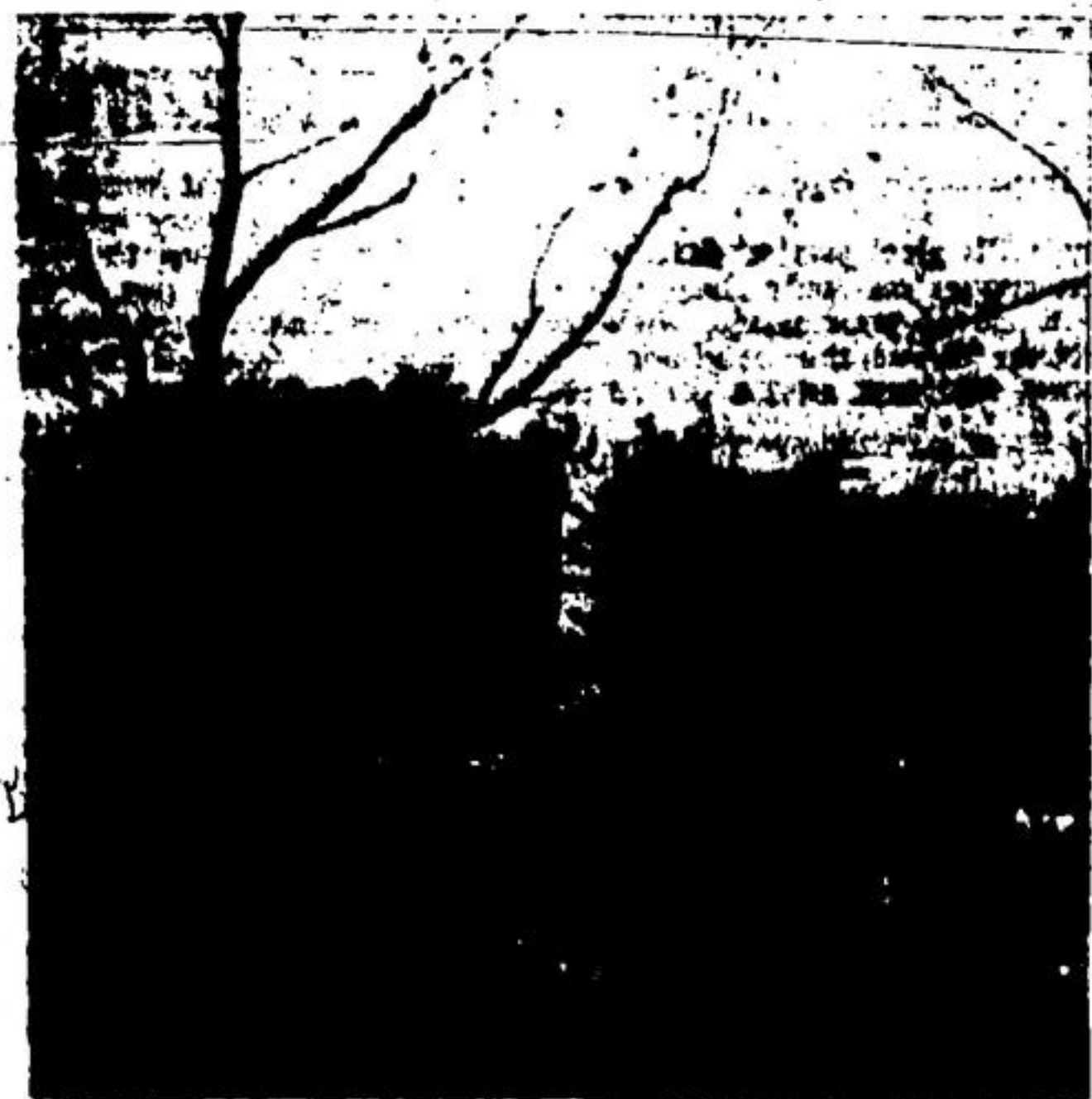
At 15 Sideroad, turn right (east) along a heavily wooded road and drive 2.4 miles to Speyside State at Highway 25. Turn right again and drive south down the escarpment 1.8 miles (another lovely view from the escarpment) to 10 Sideroad.

Lovely Road

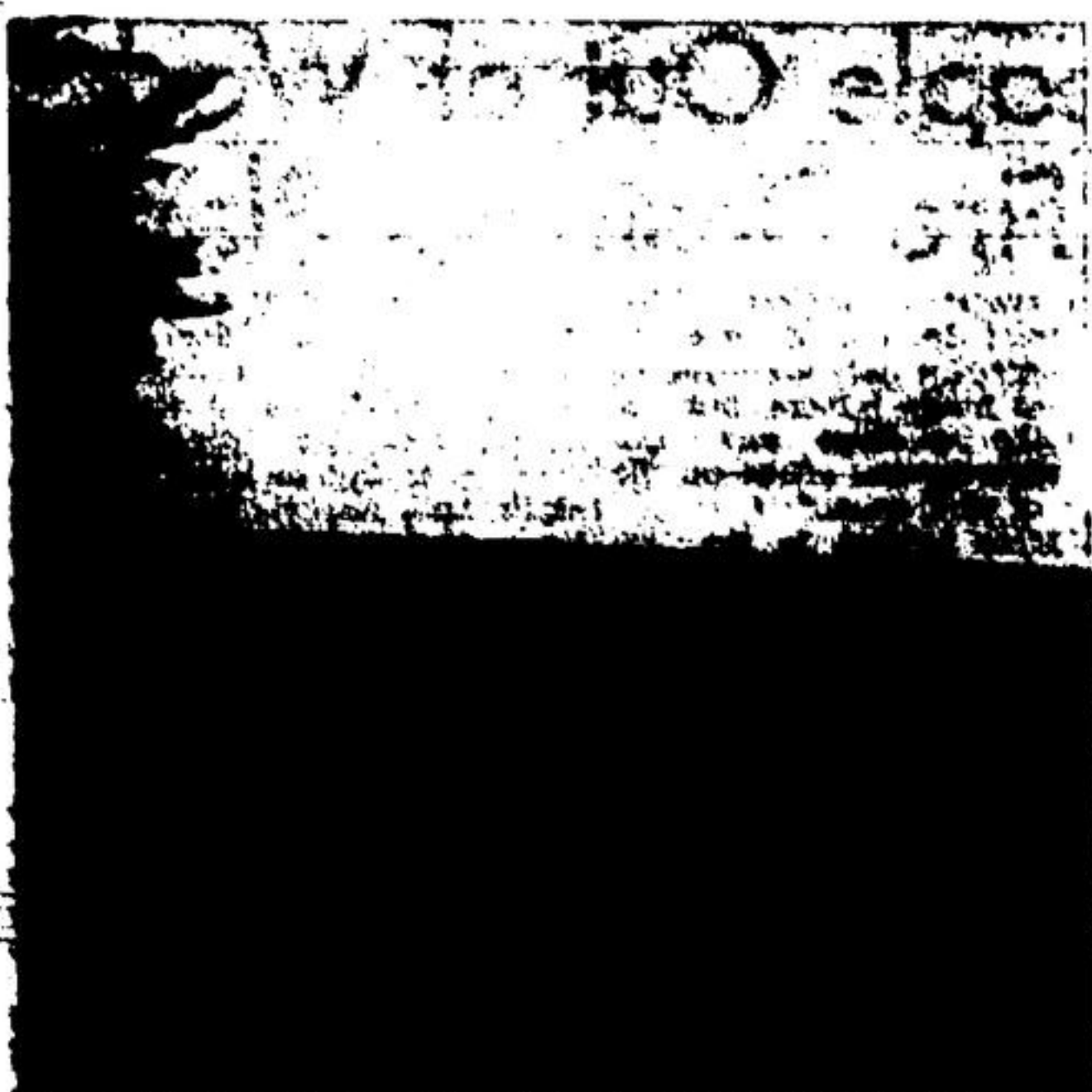
One of Halton's most beautiful roadways stretches east from the highway for the next half-mile here. The narrow winding road is almost completely covered in dense trees that grow along both sides of the gravel. Cross over the C.N.R. and 9 miles from Highway 25 turn right on the Third Line.

Head south 1.8 miles past a storied Halton homestead known as Craighill, the Boston Presbyterian Church, Halton's oldest and the cairn marking the site of the old Manswood U.P. Church, to Five Sideroad.

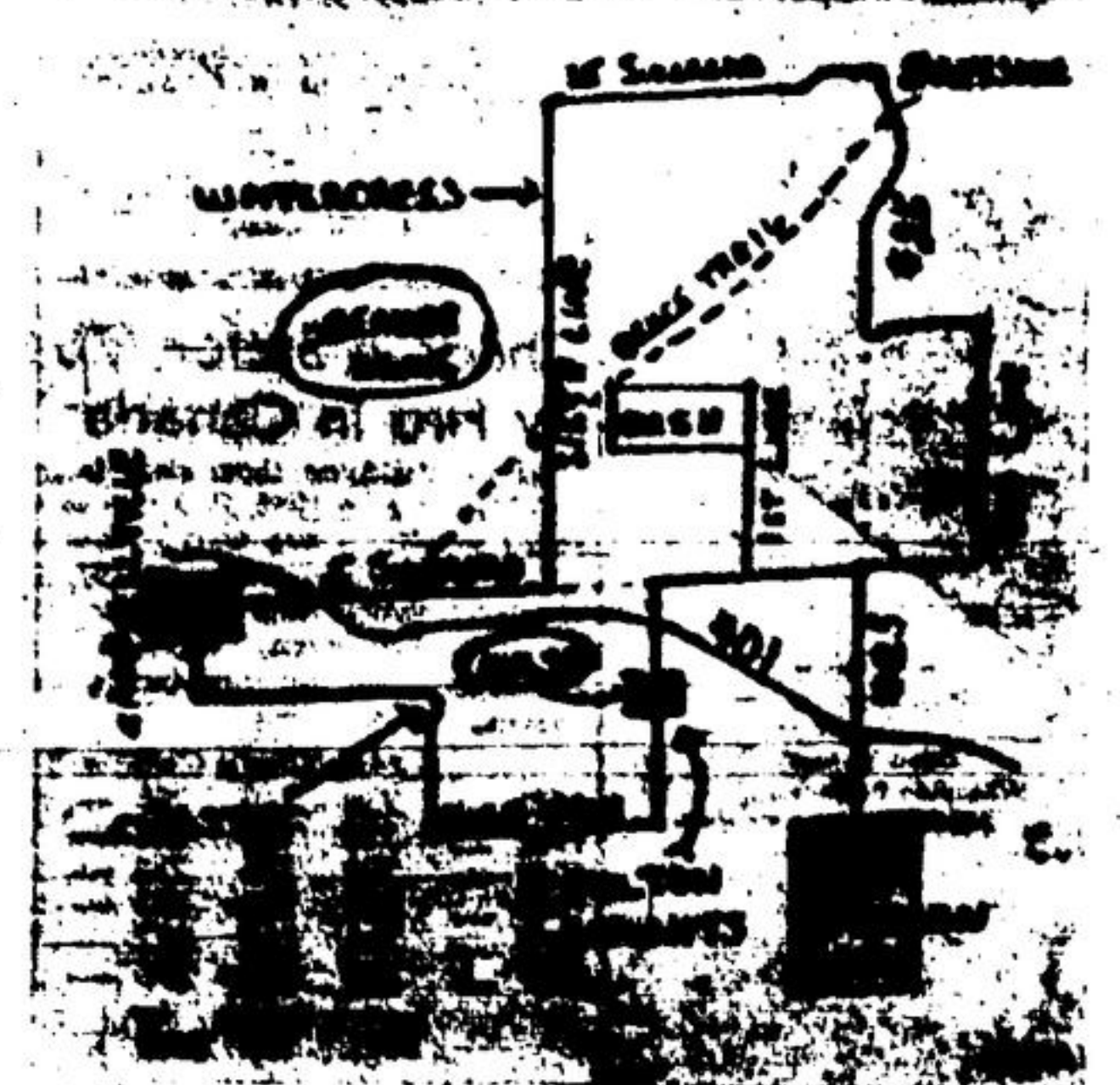
Another right turn takes you 9 miles to Highway 25, and a left turn takes you the remaining 2.6 miles back to the Milton Post Office.



The lime kilns at Christie, a major Halton industry many years ago, are ruins now.



Bob's eye view of Milton and area are offered sightseers from atop the Base Line escarpment.



Campbellville's lovely pond has picnic tables, provided by the Conservation Authority.