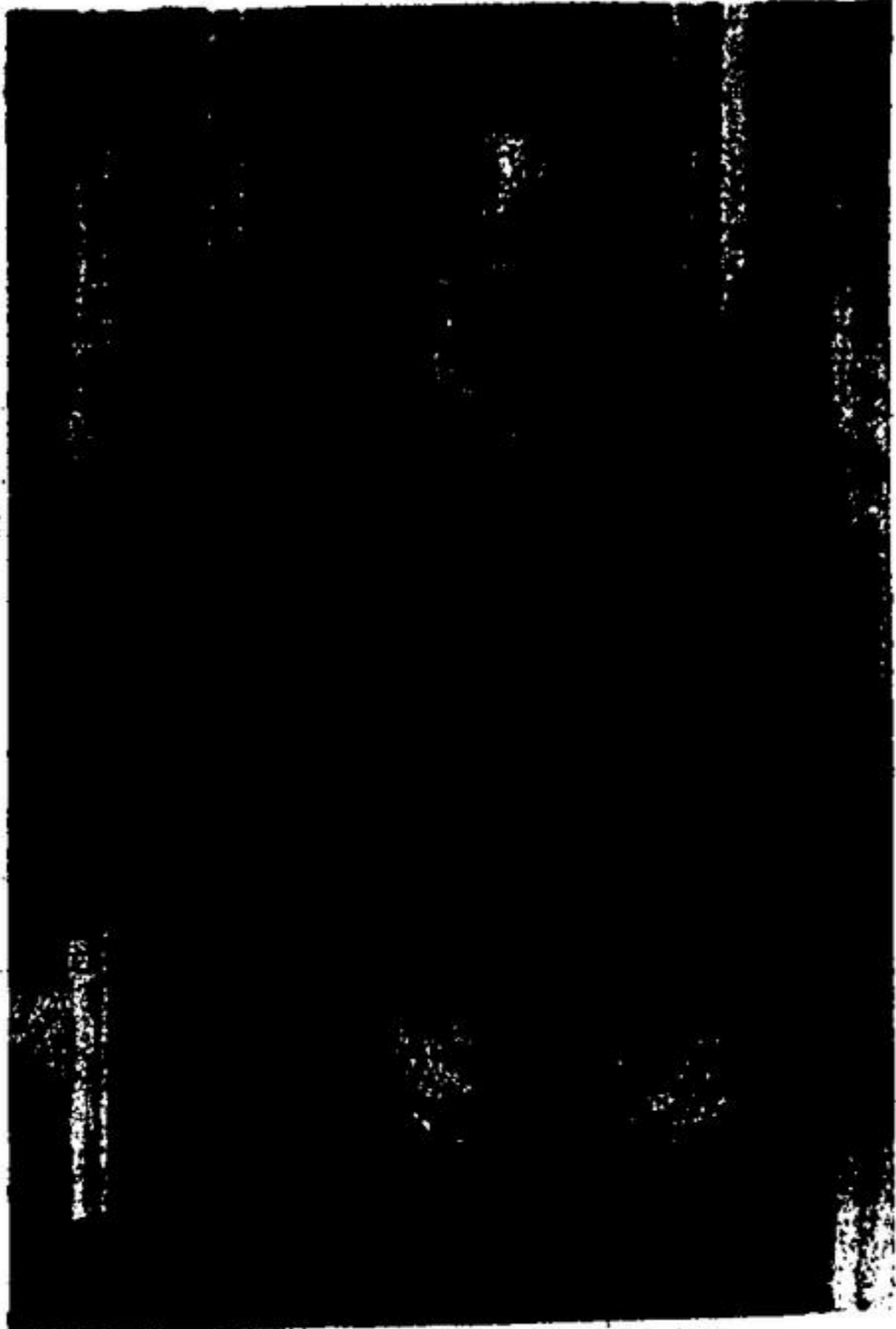


# The Acton Free Press

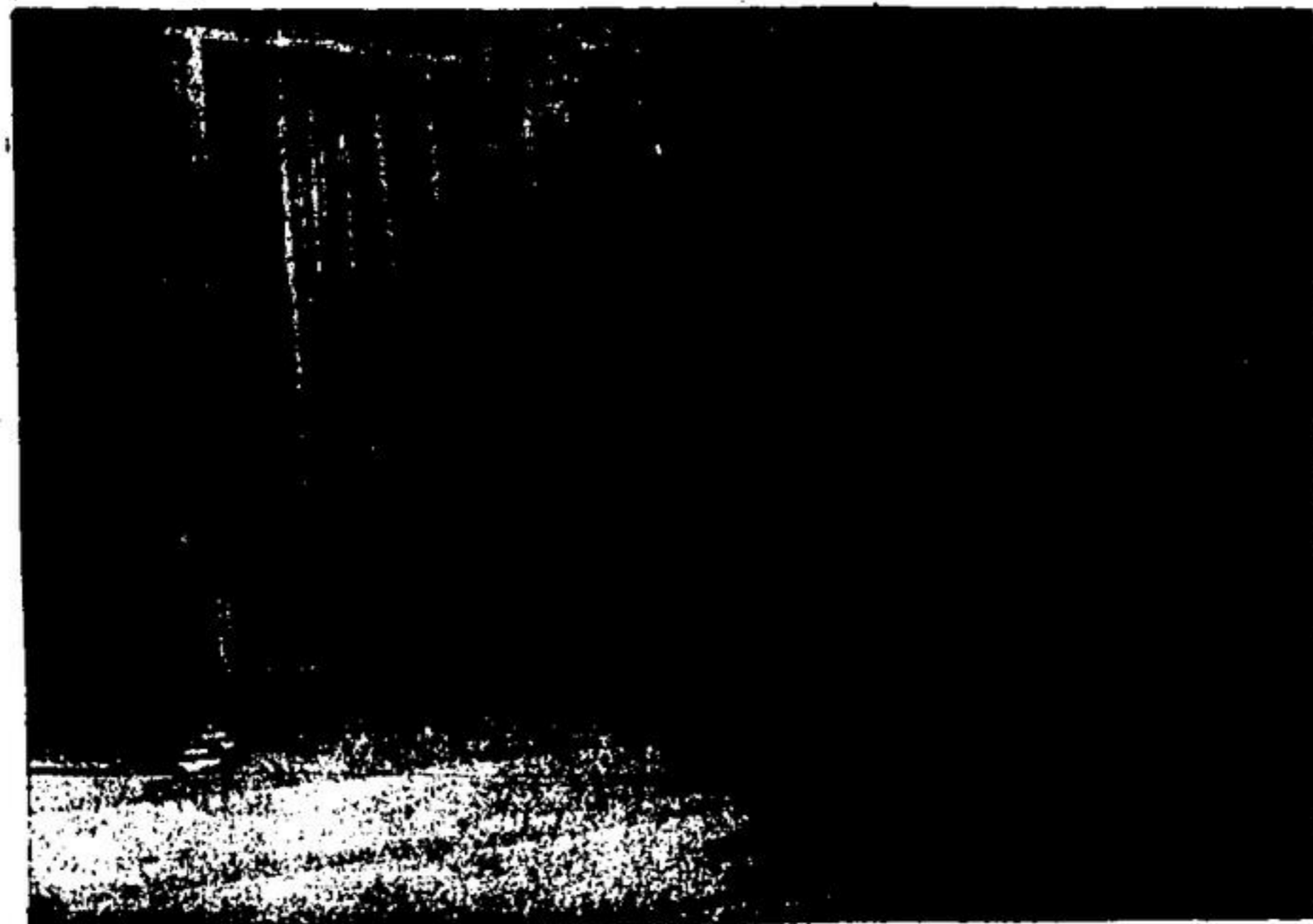
Eighty-Eighth Year, No. 22

ACTON, ONTARIO, THURSDAY, NOVEMBER 22nd, 1962

Second Section



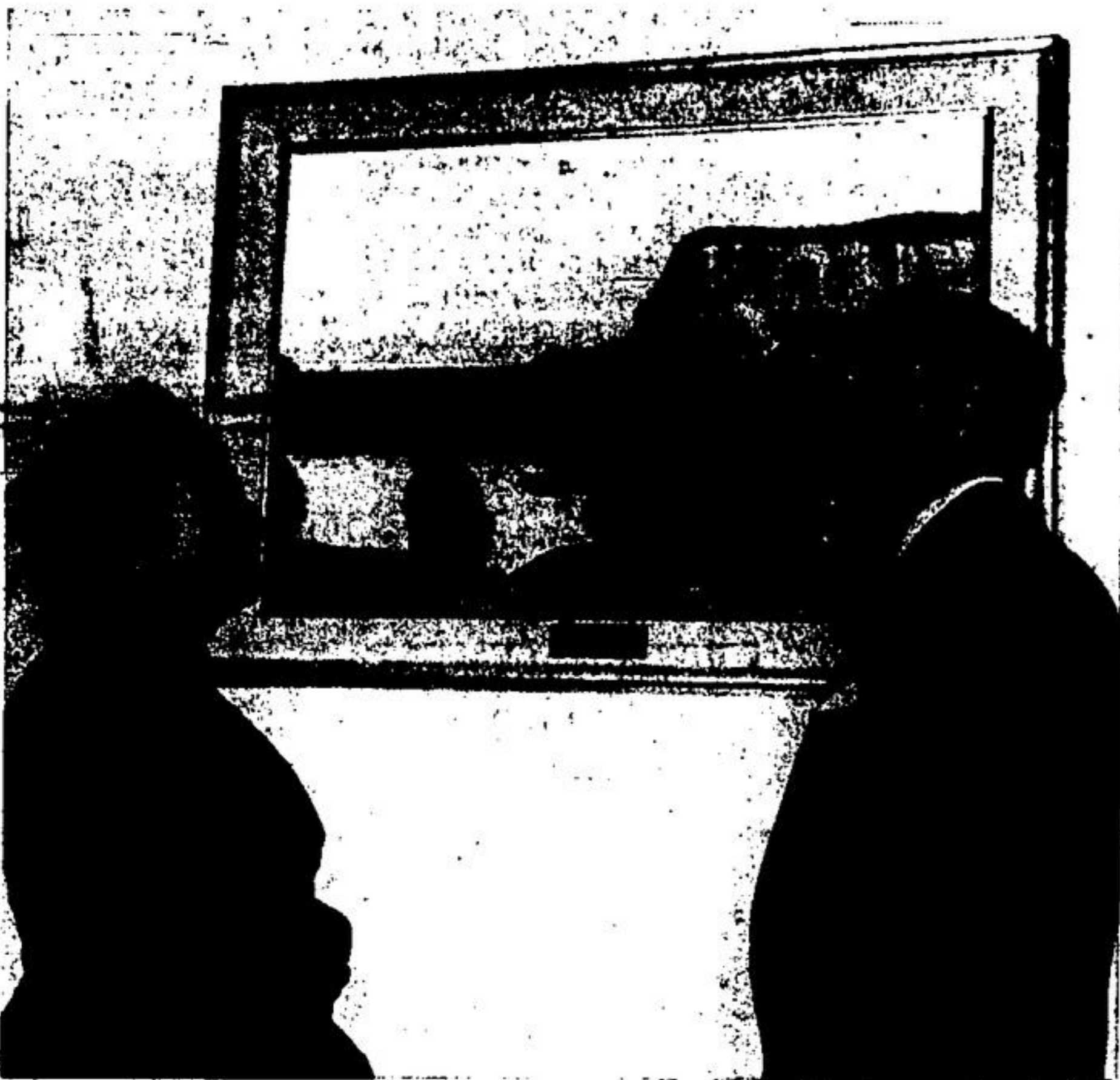
**WARDEN C. A. MARTIN** didn't waste any time snipping the bright red ribbon to open the new administration building. Cold weather and a heavy snowfall hurried up the brief Saturday ceremony, as a crowd of over 400 stood waiting to enter and inspect the building.



**COUNTY COUNCILLORS** pointed with pride to their new million dollar administration building, court house and registry office Saturday and Sunday, as close to 2,000 attended the opening ceremony and open house. Above, during the official opening ceremony on Saturday, building committee chairman Reeve John Elliott of Georgetown speaks at the microphones. Alongside are Nassagaweya Deputy-Reeve John Robertson, Museum Curator Maj. H. J. Newman, Esquimaux Reeve G. Leslie, Acton Reeve and 1961 building committee chairman R. J. Hargrave, Burlington Reeve F. J. Ryckman, Georgetown Deputy-Reeve William Hunter, and Esquimaux Deputy-Reeve Wilfred Leslie.



**CHIEF JUSTICE McRUER** of the Supreme Court of Ontario was among the many dignitaries who attended the official opening of the new Halton Administration Building and court house on Saturday. Above, Sheriff Andrew W. Frank, Inspector of Legal Offices A. A. Russell, the Chief Justice, Halton Law Association president J. E. Weatherhead of Acton, and Halton Crown Attorney P. K. McWilliams confer in one of the court rooms.



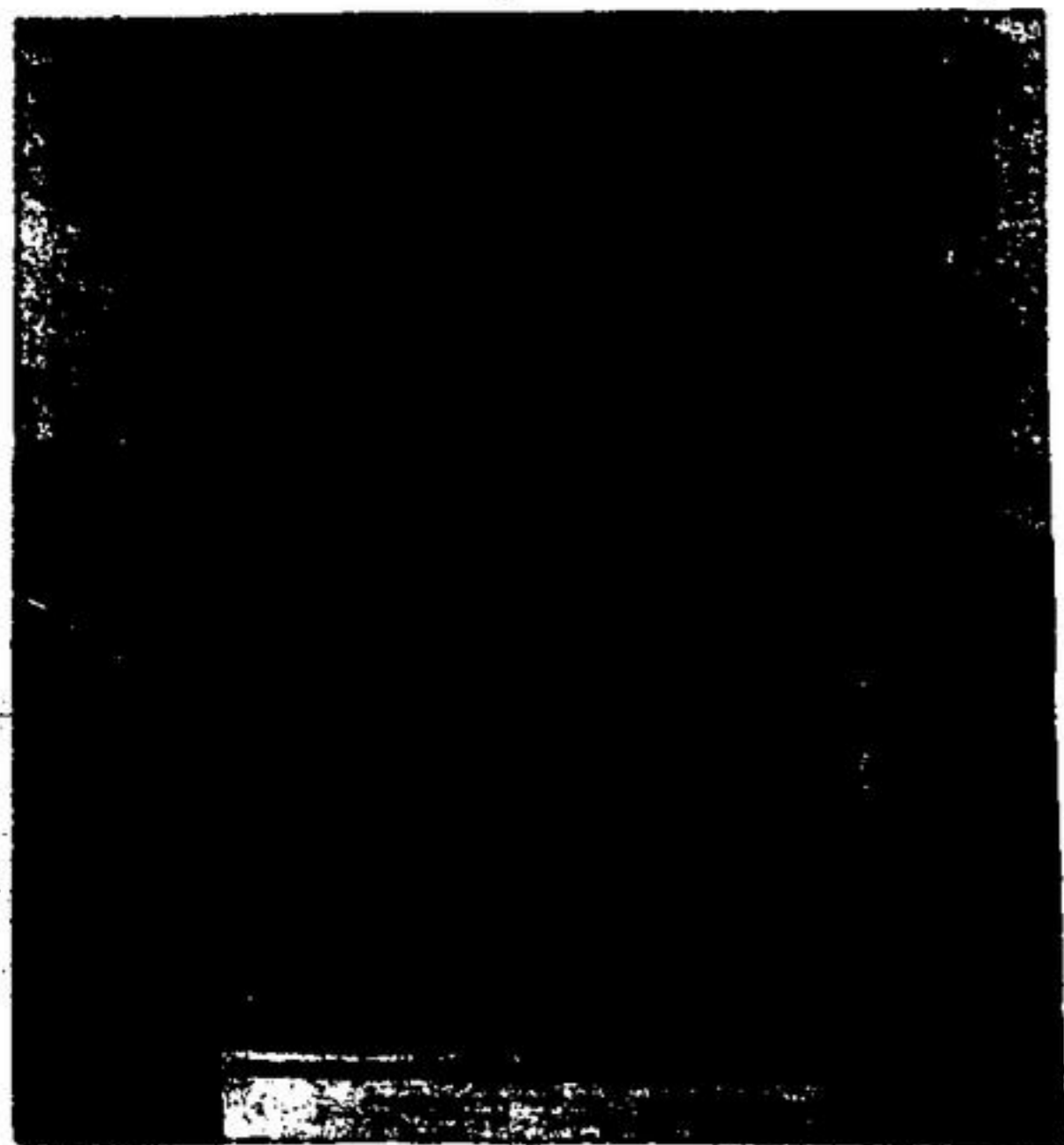
**MRS. WILFRID BIRD**, wife of the late Warden who served Halton during the first part of 1962, presented a painting in memory of her husband at the official opening of the new Halton County Administration Building Saturday. Shown with her is the artist, Maj. H. J. Newman of Georgetown. The painting depicts the colorful scenery around the Keiso Dam.



**MANY FORMER OFFICIALS** of Halton County were in attendance over the weekend as county council opened the new administration building on the Base Line. Shown chatting during the open house are former Trafalgar councillor Joe Jackson, who was Warden in 1952 during the county's 100th anniversary year, former sheriff W. J. L. Hampshire of Esquimaux, sheriff from 1935 to 1946, former Nelson councillor Charles Readhead of Lowville, who was eight years on the county council and the 1917 Warden, and William Robertson of Lowville, sheriff from 1946 to 1958.



**A PRIZED SOUVENIR** of Halton County's new administration building was carried home by George Currie, three year old grandson of the late Warden Wilfrid Bird. Currie was presented with the picture of the building by Warden C. A. Martin. Above, the picture is being presented to Currie by Warden Martin. Right, Warden Martin, Sheriff Andrew W. Frank, and Inspector of Legal Offices A. A. Russell, and some of the grandchild of the late Warden Bird.



**ADMIRING THE DRAPES** in the council chamber at Saturday's administration building opening are Dr. C. A. Martin, Reeve of Milton and Warden of Halton County, and Mrs. Elizabeth Wilks Hoey, who designed and made the drapes. Mrs. Hoey also painted a water color of the former court house, which hangs in the new building as a memorial to the late Warden Wilfrid Bird, who died during his term of office.



**LORNE SCOTS BANDS** entertained the crowds that viewed the new building over the weekend. Above, part of Saturday's crowd is shown with the Lorne Scots Military Band, directed by Lt. E. G. Corlett. On Sunday, the Lorne Scots Pipes and Drums played for the open house under the direction of Pipe Major Joe Sellers. Nearly 500 were at Saturday's opening, while over 1,000 inspected the offices, court rooms and registry office at the Sunday open house.



**JUDGE G. E. ELLIOTT** had his vision of a private chambers and courtroom in the new court house Saturday and Sunday. Above, the Greenham's Agriculture Representative J. A. Francis and Esquimaux councillor George Currie. The court for this building is the third floor of the new court house and administration building.