

Credit Valley R.R.

Old Railway Deed Records Start of Line Back in 1871

Mr. J. Carion, who farms on the Highway-Esqueving Town line near Milton, has a valuable document in his possession. It is a copy of the original agreement between the County of Halton and the Credit Valley Railroad, that was responsible for starting the line through Halton that is now the Canadian Pacific Railroad.

Dated November 14, 1871, the agreement noted a by-law was being submitted to the county ratepayers to approve the granting of \$75,000 financial aid to the railway to assist in constructing the line.

Euchre, Dinner Plans Finalized by Guild

St. Alban's Parish Guild met in the parish hall for the 70th meeting with Mrs. W. Denny presiding. The meeting opened with the Guild Prayer, followed by the Scripture reading by Mrs. R. Anderson. The minutes of the last meeting were read by secretary, Mrs. L. Clarke. The financial report was given by Mrs. J. Cressy Jr. in the absence, due to sickness of the treasurer, Mrs. H. Denny.

The business session centered around arrangements for the June and bridge May 5. Also plans were made concerning a dinner on May 30 for approximately 45 persons to be catered to by the Guild.

Buff Stations

Stipulations were that the railway company build and maintain a station of the Seventh Line of Trafalgar, also one on the Guelph Road at Campbellville; that they also erect at Campbellville a warehouse for storing grain and other farm produce free of charge; and also that the railway put up \$7,000 for graveling the 10 Sideroad between Milton and the Guelph Road and down the Guelph Road to the village of Chalmersville, with a branch of

LETTER TO THE EDITOR

Where are Jobs Best Promised?

The Editor, Acton Free Press.

Dear Sir:

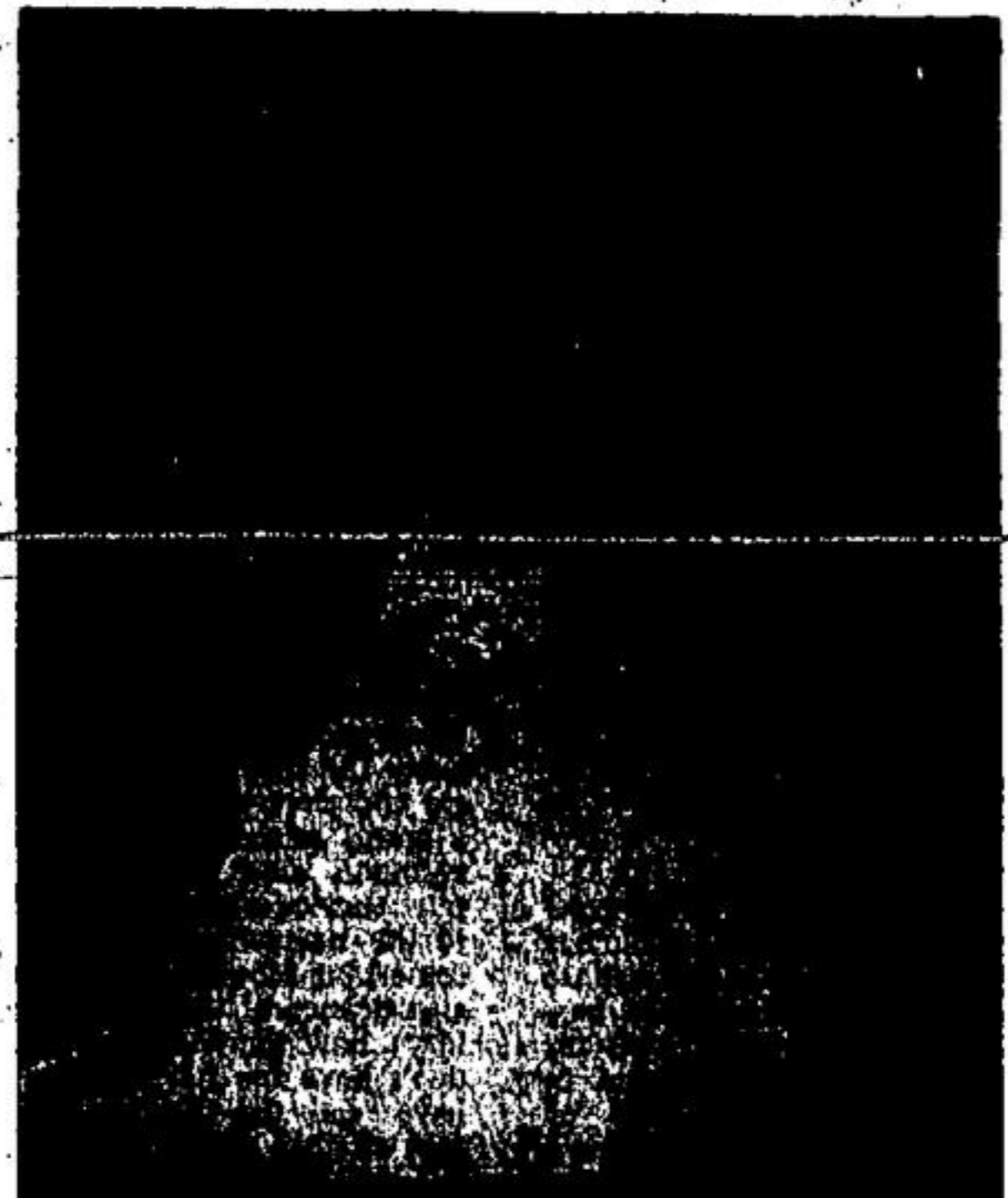
I wonder how many Acton voters can recall the election of 10 June, 1957? On Friday, 7 June, 1957, Mr. Alexander Best* flooded the streets of Acton with flyers alleging that Liberal policies had caused the closing of Wool Combing and that a Conservative government would correct that.

I wonder how many Acton voters also remember that Wool Combing has not yet re-opened its doors; and how many Acton voters remember the cancellation of the Arrow? Mr. Alexander Best* has been bragging about the thousands of man hours of work created in this riding by the government through construction of post offices and grade crossings. Would Mr. Best* care to give us the number of man hours lost through cancellation of the Arrow?

Liberal voters in the north part of this riding should have their heads read if they let Mr. Best* sway with that.

Yours truly,
I vote Liberal.
* Son of the co-discoverer of insulin.

MEET HARRY HARLEY
SEE PAGE SIX



OBITUARY

Services Tuesday For Mrs. A. E. Hanna

After a progressive illness which culminated with the fracture of her wrist, Mrs. Ethel May Hanna, widow of the late A. Edward Hanna, passed away at Halton Centennial Manor on May 13. She was in her 84th year.

Mrs. Hanna was born at One mile in 1878, daughter of the late William and Letitia Magee. She was married in 1914 at Janetville and her husband predeceased her in 1943. They lived at Janetville until 1932 and she had made her home successively at Midland, Meaford, Oshawa, Toronto and Acton before going to the Manor five years ago. She is survived by a son H. Arthur Hanna, Oshawa, a daughter Mrs. A. R. Long (Midland), Acton, four grandchildren and two nephews, Edwin J. Lenton, Vermont and J. Leslie Lenton, California. She was predeceased by her husband, a son Ralph, stepson Donaldson, four brothers and two sisters.

Family Plot
A member of the Methodist and then United Church, she was a life member of the W.M.S. Rev. Dwight Engel conducted the funeral service at the Runley-Shoemaker funeral home on Tuesday, May 15. Interment was in the family plot at Emily cemetery, Omemece. Pallbearers in Acton were R. H. Elliott, R. H. Lewis, Orwell Johnston and Ken Allen of Acton, W. I. McNeil, Milton and Ted Graham of Milton. Pallbearers at Emily cemetery were Ralph Rowan, William Rowan and Clarence Johnson of Bethany, Fred Rowan of Peterborough, Lowell Falls of Cadmus and P. J. Rowe of Janetville.

Because she had always wished she could have been a deaconess, the family requested in lieu of flowers, contributions be made to the Missionary and Maintenance Fund of the United Church of Canada.

ON MAY 11 Theresa Hulsman, daughter of Mr. and Mrs. E. Hulsman, Mill St., Acton and Ralph Fledderus, son of Mr. and Mrs. J. Fledderus, Port Dover, were married in the Christian Reformed Church by the Rev. J. Nutma.

County-Wide Homemaker Service Is Studied by Children's Aid

The Children's Aid Society of Halton County has been asked to prepare a survey of the probable administration cost of a County Homemaker Service, the availability of personnel and the feeling of municipalities presently having the service.

In the Finance and Welfare Committee's monthly report to County Council recently, the committee reported on a meeting with representatives of the Halton Welfare Council to discuss Homemaker Services.

County-wide
Mr. Crawford, chairman of the committee on Homemaker Services, explained the problems of having people to carry on in the absence of the mother or other homemaker in the home. He went on to explain that the Welfare Council feels a county-wide service is desirable. Burlington is the only Halton town to have such service at present.

Under legislation passed in 1958, Mr. Crawford pointed out, municipalities are authorized to

set up such services. In cases where families are unable to pay the full cost of a homemaker, the municipality may assist them financially. The cost of such service is split evenly with the provincial government.

Mr. Bentley, Welfare Administrator for Burlington, told the committee that cost to the municipality has been comparatively light. He felt that Burlington would co-operate if a county-wide homemaker service were organized.

The income tax was unknown in Canada before 1917.

Quite a bit of indigestion is caused by people having to eat their words.

Halton County's WAR ON WEEDS

By V. E. McArthur, Weed Inspector

"YELLOW GOAT'S BEARD"
It seems to me that the predominant color of our early weeds is yellow. For instance, the common dandelion, yellowrocket, shepherd and "Goat's Beard" are examples of the first flowering weeds of the season.

In this article I wish to single out "Yellow Goat's Beard"; because it is appearing in new locations each year. Fortunately it is still reasonably scarce so I think we have an excellent opportunity to keep it in check.

Goat's Beard does not usually persist in cultivated fields but is troublesome on roadsides, railway right-of-ways, and idle farm land. It can be recognized because of its height, often growing about three feet high with a very straight milky stalk and a long tap root. Large yellow flowers open in the morning and close about midday. Because of this characteristic someone once named it "Johnny-go-to-bed-at-noon".

Control of Goat's Beard is no problem in fields where comparatively short crop rotations are used so it is early killed by cultivation. However, when it invades idle farm land or road-sides it is important to either mow or use a weed spray. As the seeds mature fairly early, this weed requires attention in late May or early June for best results.

"Yellow Goat's Beard" is classified as being fairly susceptible to 2,4-D by the Ontario Department of Agriculture. An application of about eight ounces of ecive 2,4-D acid per acre will kill the tops. However to kill the roots as well, double this amount is recommended. The latter recommendation would seriously damage clovers if they are present.

Since the seeds of "Goat's Beard" travel so far so easily everyone should be on the look out for the tall weed with the yellow flower. Perhaps a short session of pulling now will prevent a serious future infestation.

**Robt. R. Hamilton
Fred. A. Hoffman**
OPTOMETRISTS
(Formerly E. P. Head)
PHONE GUELPH TA 4-2071
58 St. George's Square

Acton Public School Kindergarten Enrolment

Acton public schools will be able to accommodate all pupils of Kindergarten age this year. To enrol they must be five years old by December 31, 1962 (Birth certificate required). To avoid confusion, please complete the form below before May 25 and send or mail it to your district school in care of GARNET W. MCKENZIE, Principal, Robert Little School, Box 202 or W. D. ELMER SMITH, Principal, M. Z. Bennett School.

Child's Name: Christian Name _____ Surname _____
Date of Birth: _____ Day _____ Month _____ Year _____
Parent's or Guardian's Name in Full: _____
Address: _____ Street _____
Phone No: _____

FOR FURTHER INFORMATION CALL
ROBERT LITTLE SCHOOL 853-2540
OR
M. Z. BENNETT SCHOOL 853-0530

LISTEN AND LEARN TOUCH TYPING IN JUST 10 DAYS

Now Smith-Corona offers you a complete audio-visual typing course: 5 LP records and an easy-to-read instruction manual. Yours with any bright, colorful new Smith-Corona portable. More people buy Smith-Coronas than any other portable. Try one today.

BACK-TO-SCHOOL SPECIAL \$3.95 WITH ANY SMITH-CORONA PORTABLE DILLS
STATIONERY
56 MILL ST. 853-2030

Bedding Plants
A Full Variety of Vegetables and Flowers
EXCELLENT QUALITY

3 Boxes FOR \$1.00

FLOWERING SHRUBS — EVERGREENS — ROSE BUSHES
GERANIUMS
GLADIOLI BULBS — DAHLIA ROOTS — PERENNIAL PLANTS
DUTCH ONION SETS AND MULTIPLIERS

Hinton's 5c to \$1 Store
See our complete selection of gardening needs, seed fertilizer, garden tools, insecticides and sprays, etc.

ACTON, ONT. WE DELIVER

We All Want To Make Sure Profits
and
We All Need Life Assurance Protection

You Are Assured Both in a
Commercial Union Assurance Company Limited
DUAL PURPOSE INVESTMENT PLAN

EDGAR FORCE Phone 853-0414 ACTON

ESSEO
Multi-Purpose GREASE
(Grade on Cap)

THE TWO MOST EFFICIENT PACKAGES ON THE FARM

The egg came first but a better and more efficient way to package grease has yet to come

Esso MP grease in cartridges makes refilling your grease gun as simple as loading a shotgun. Just slip the cap off a cartridge and drop it in the gun, it's done in seconds. You save time and eliminate waste. No dirt will ever get into the grease, Esso MP grease in cartridges means extra protection for your valuable farm equipment.

Get a supply from your Imperial Esso Agent and see for yourself.

Angus A. Mowbray
MILTON

ALWAYS LOOK TO IMPERIAL FOR THE BEST

VAUXHALL'S New Design Means Real Comfort

PLENTY OF ROOM
...for all the family!
There's plenty of stretch-out legroom—and headroom and hiproom are equally generous. Truck capacity is a whopping 21½ cu. ft.

LUXURIOUS RIDE
...over any road!
Victor's new design Level-Ride suspension soaks up the bumps... cradles you in cushion-soft comfort. The lower centre of gravity cuts down sway.

EXTRA CONVENIENCE
...at no extra cost!
Victor's heater has been proven in use through many Canadian winters. It's adjustable to give you a cooling flow of air in summer.

THE SEVEN CAN BUILT AND BACKED BY GENERAL MOTORS
Vauxhall Super Sedan



62 VAUXHALL VICTOR... The Clean Line of Good Design

Be sure to see "The Tansy Ambrose Show" on the CBC TV network on Friday evenings. Check your local listings for channel and time.

FRANKLIN PROUSE MOTORS LIMITED
351 Queen St. E. Phone 853-0450