



A DISTINCTIVELY NEW styling touch in both the front and rear end of the 1962 Chevrolets is a sharp departure from the sloping hood formerly used. The Bel Air four-door sedan shown here is one of 14 new standard size passenger cars offered by Chevrolet in 1962.

### List Oldsmobile Features As New Models on Display

A hardtop with a roofline styling practically identical to that of a convertible, and new engineering features designed to cut lubrication and maintenance costs highlight details of Oldsmobile for 1962, announced here today by General Motors of Canada.

Among the engineering refinements that will cut servicing costs are: Replacement of all open-end lubrication fittings by factory-sealed units and revision of generator and distributor lubrication points to eliminate the need for periodic lubrication under normal operating conditions.

A self-adjusting power braking system which automatically compensates for brake lining wear by adjusting the clearance between lining and drum, eliminating the need for periodic brake adjustments.

The Oldsmobile's over-all length has been increased by nearly two inches. Wheelbases of the three series remain the same — 125" on the 88 series; 126" on the 98.

Oldsmobile offers 17 body styles in three series — Dynamic 88, Super 88 and 98. Fifteen exterior colors are available.

In addition, improved performance and increased fuel economy result from Oldsmobile's new combustion chamber and higher (10.25 to 1) compression ratios in Rocket and Skyrocket engines, as well as lower, rear axle gear ratios.

The 260-horsepower Rocket engine is designed to deliver better mileage on premium-grade gasoline. A 260-horsepower Rocket engine with an 8.75 to 1 compression ratio is available for regular-grade gasoline use.

Maximum brake horsepower of the Skyrocket engine with four-barrel carburetor has been increased to 330. This engine is standard on the Super 88 and 98.

**Diameter Reduced**  
Diameter of the steering wheel on Oldsmobiles equipped with power steering has been reduced by one inch. This provides driv-

ing comfort and easier entry and exit for the driver. The steering wheel has also been raised for increased clearance between the wheel and front seat.

General Motors also announced that for the first time two soft-top models — the Sports Convertible and Cutlass Convertible — are being offered in the F-85 range of smaller-sized Oldsmobiles. A hardtop version of the powerful convertible Starfire, introduced in the regular line for Oldsmobiles last season, is also available in the 1962's.

The F-85 this year is available in nine models — the two convertibles — a four-door sedan; a four-door, two-seat station wagon; a four-door, three-seat station wagon and a club coupe; a deluxe four-door sedan; a deluxe four-door, two-seat station wagon and Cutlass Sports Coupe. Fifteen Magic-Mirror exterior colors — including a new Char-iot Red — are available.

Two engines — the standard 155-horsepower aluminum Rocket and the optional four-barrel carburetor 185-horsepower Cutlass — are offered by F-85. A new, smoother 3-speed synchromesh transmission is standard. Rotomatic power steering is also available as an extra-cost option.

Styling changes in the F-85 include a completely restyled front end with new hood, grille and headlamp housings. As well, the F-85 has a restyled rear section with twin tail lamps mounted on each side.

### Dismiss Charge . . .

(Continued from Page One)  
ing spraying operations and told the court that samples of the effluent were obtained for testing by the O.W.R.C. Mr. Simpson gave a detailed report of the samples taken by Mr. Watt during the August 2 visit to the scene of the company's spraying operations.

During the proceedings, various aspects of evidence were given, after which Magistrate Langdon dismissed the case.

### OBITUARY

#### Death Came Suddenly For Isabel Puncheon

The death of Isabel Coral Puncheon, 52, wife of a local garage operator, Grant Puncheon, came as a shock to the community, Saturday when she suffered a cerebral hemorrhage while working at her home at 252 Queen Street, East.

Her cheery manner and willingness to help held her in high esteem, not only with her immediate friends but many citizens who were patrons at her husband's place of business, where she helped.

A member of St. Alban's Anglican church, she joined the Y's Menettes, shortly after moving to Acton from Toronto. She will be greatly missed by members of the organization.

The mother of one daughter, Pamela, at home, she was the daughter of Mrs. Stanley Brooks and the late Mr. Brooks, Stratford and was born in Huntsville. Also remaining to mourn her loss is one sister Margaret (Mrs. F. Wade) Stratford.

Funeral service was conducted Tuesday afternoon by the Rev. Donald West, at St. Alban's church with interment in Fairview cemetery.

Pallbearers were: John Rolston, Harold Watson, Doug Vickery, Sam Tennant, Arthur Andrews and Bruce Barber.

—Only 85 more shopping days until Christmas.

### THE Georgetown Convalescent and Nursing Home

offers quiet, clean accommodation and competent care for the sick and elderly. Rates are reasonable and visitors welcome.

Nurse in attendance at all times

Please Phone TR 7-9223

104 MAIN STREET N.

# ARTHUR SCOTT

61 Guelph St., GEORGETOWN

CORDIALLY

THE PEOPLE OF ACTON

OPEN

FRIDAY,

TO

THE NEW

CHEVROLETS and

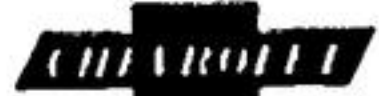
REFRESHMENTS SERVED

ALL NEW MODELS ON

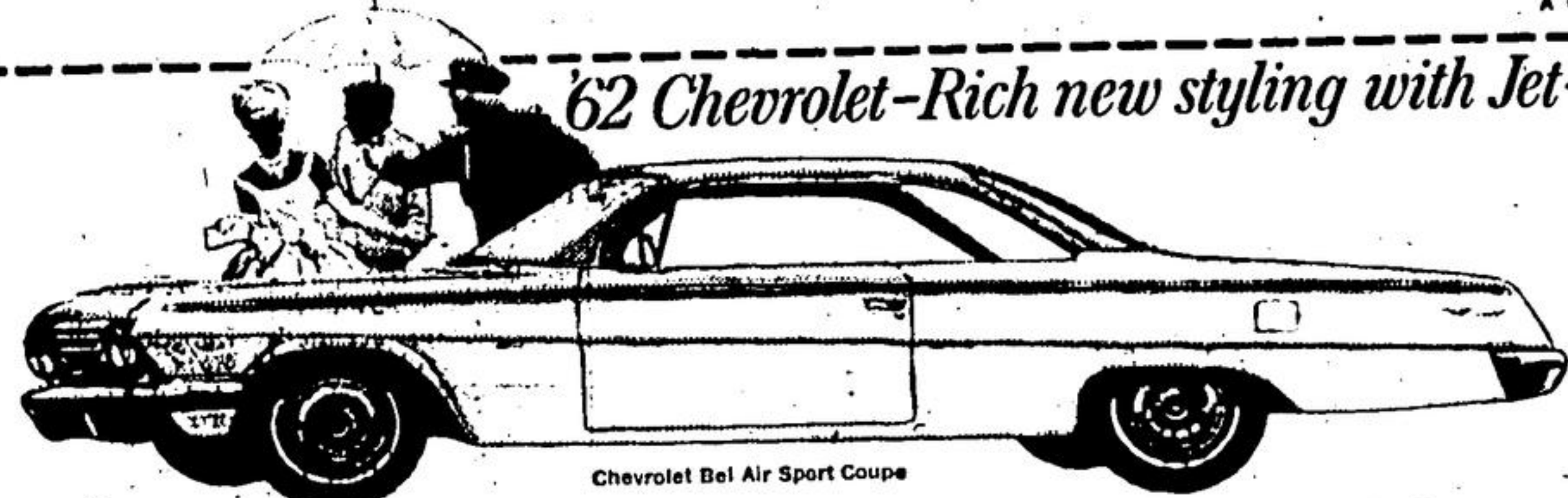
COMING SEPTEMBER 29th! *A New World of Worth from Chevrolet!*

You'd expect Chevrolet to do it — and it has! Traditionally Chevrolet has been the leader who so deftly pinpointed the needs of Canadian motorists — and then so aptly developed the right cars to fill those needs! Now Chevrolet has done it again! From its his-

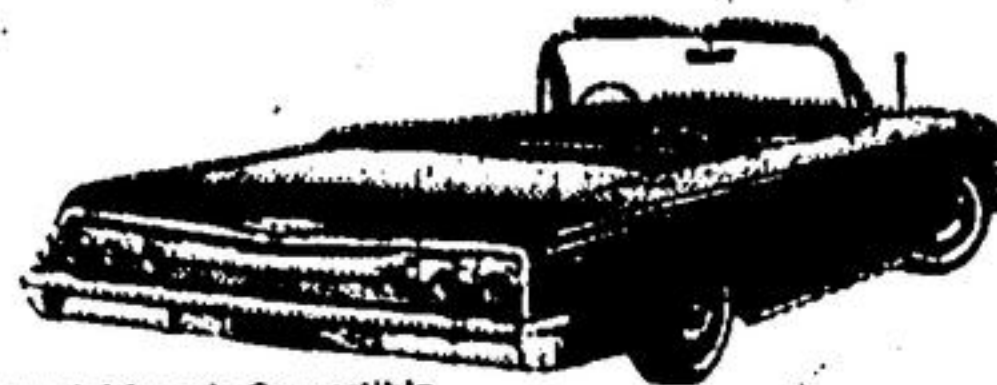
tory of achievement in engineering perfection, mechanical durability and luxurious comfort, Chevrolet takes another significant step into the future. And now in 1962, Chevrolet invites you to enter a new World of Worth.



A GENERAL MOTORS VALUE



Chevrolet Bel Air Sport Coupe



Chevrolet Impala Convertible

*'62 Chevrolet—Rich new styling with Jet-smooth ride*

Here's all the car anybody could want. Fresh-minted style that comes to a clean-sculptured climax in the new Impala Convertible. A road-gentling Jet-smooth ride. A new choice of V-8 skidaddle. New Body by Fisher interiors that give wide berth to feet, hats and elbows. Beauty that's built to stay beautiful — right down to new front fender under-skirts for extra rust resistance. And here's more than ever to please you from the make that pleases the most people. Impalas — that take the high price out of feeling luxurious; Bel-Airs — that ride as smooth as they look; Biscaynes — that sacrifice not one iota of comfort as they go their thrifty way. See your Chevrolet dealer and talk over this newest version of Canada's traditional leader!

### CHEVY II — A TOTALLY NEW LINE OF CARS

It's the car just about everybody's been trying to build. But it remained for Chevrolet to come through with it. Here are all the time-tested virtues you expect from Chevrolet plus surprises you've never seen. A full line of saucy new-size models built a new way for easier service and maintenance. Thrifty? Only four cylinders to feed, or six if you like extra scamper. Roomy? Sedans seat six solid citizens. Price? A most pleasant surprise (with the heater-defroster at no extra cost!).

Chevy II doesn't stint on anything — except gasoline! Its power plants both have hydraulic valve lifters and an 8.5 to 1 compression ratio. There's Chevrolet's famous Powerglide automatic transmission available. And there's a suspension system that includes Mono-Plate Rear Springs — part of an advanced, road smoothing suspension. But high on Chevy II's list of virtues is the comfort and style that until now has been known only in cars costing much, much more!

And it's yours to enjoy in all three series of Chevy II — in all nine models. There's the Chevy II 100 series — beauty built for every budget. The Chevy II 300 — function with a flair in a family car. And the Chevy II Nova 400 series — sensibility at its Sunday-best. Choose one — and you get everything you want in a car — including the dollars-lower price tag!



Chevy II Nova 400 Convertible



Chevy II 300 4-Door Sedan



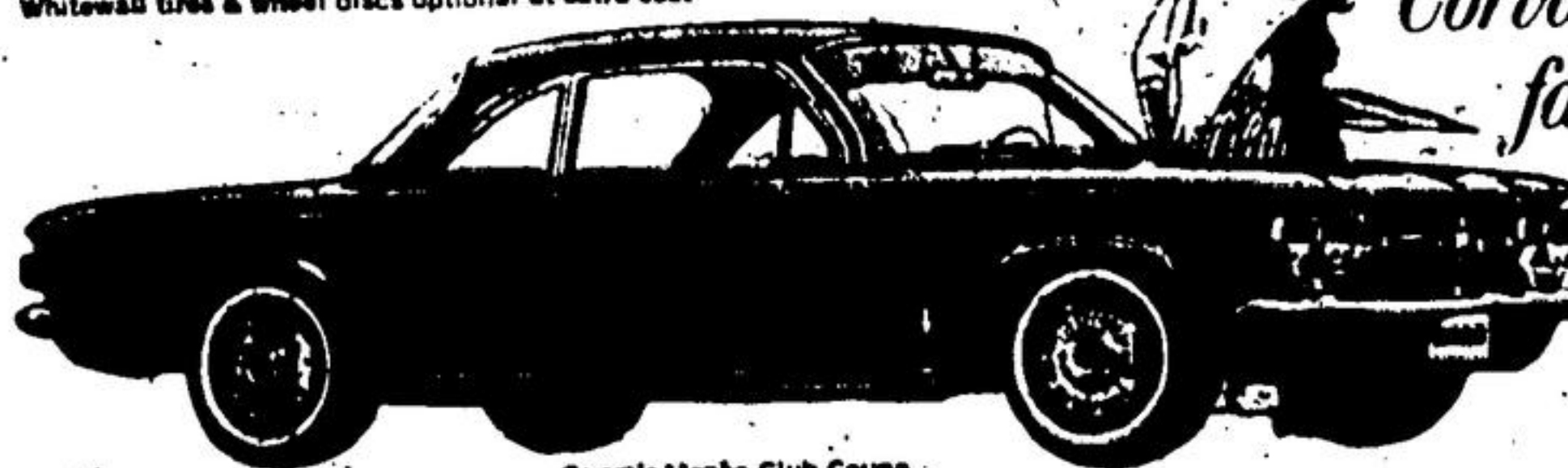
Chevy II 100 4-Door Station Wagon

### ALL THIS IS YOURS IN A CHEVY II

- Body by Fisher — solid strength and lasting value
- Choice of 2 Power Plants — 4-cylinder four or almost-as-thrifty six
- Choice of 2 Transmissions — 3-speed Synchro-Mesh or Powerglide
- Industry-new Suspension System — Mono-Plate Rear Springs, never require lubrication
- Power Features — Steering and brakes optimized on all models

- Unique Unitized Construction — two box-like sections for extra strength
- Exclusive Interiors — Handsome upholstery in a choice of colour combinations

Whitewall tires & wheel discs optional at extra cost



Corvair Monza Club Coupe

*Corvair—sports car spirit... family car function*



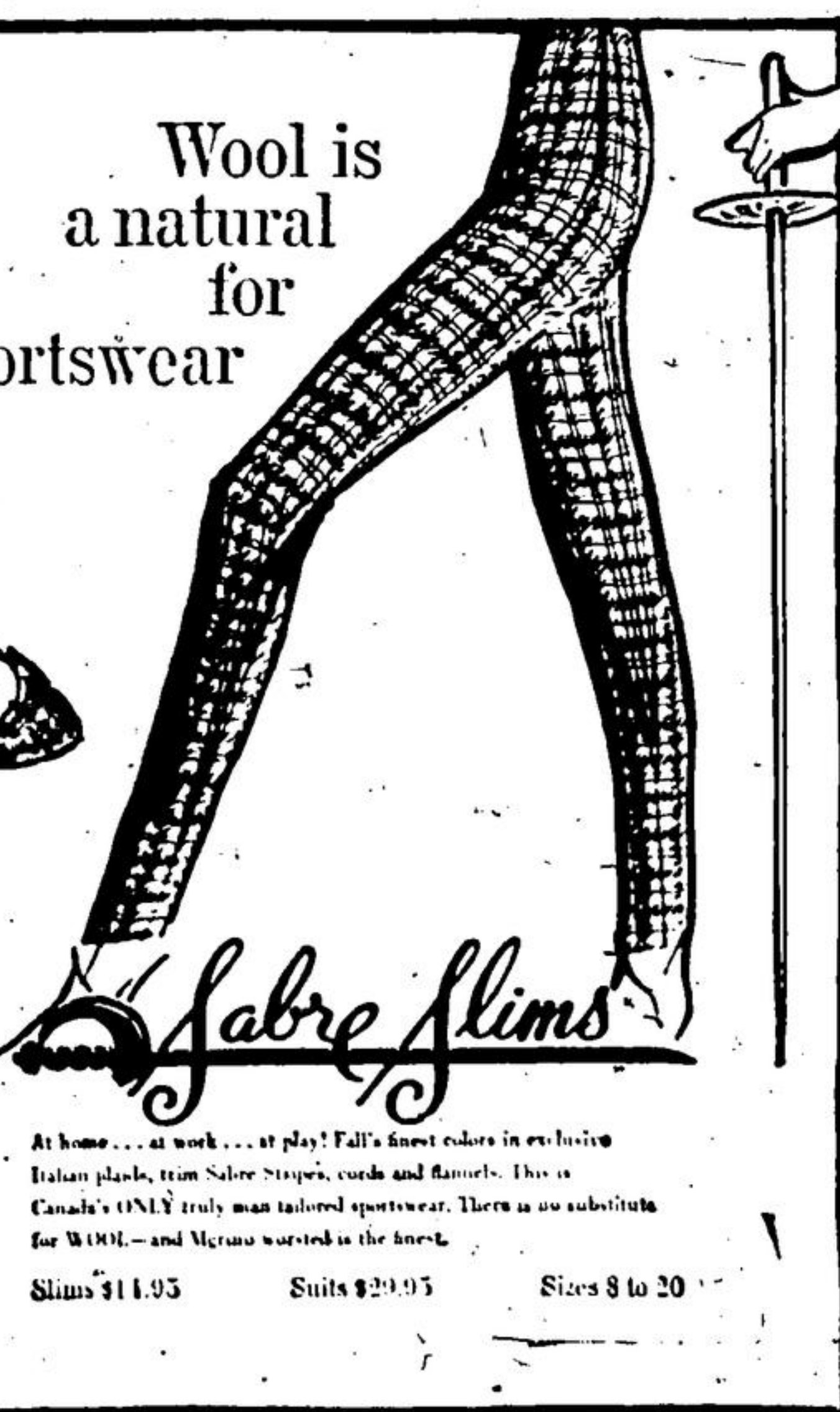
Corvair Monza Station Wagon

You'll never find joyful excitement wrapped up so carefully with economy, elegance and sports car dash as it is with Corvair for '62. There's the sure-footed agility that stems from Corvair's rear-engine and weight distribution — complete with its gas-saving ways. There's the sport appeal

of bucket seats\* — and there's the kiddies' rooping room that comes when the rear seat is folded down\*\*. Certainly, the nine models of Corvair for '62, including the new Monza Station Wagon, combine the best of family comfort with a sports car flair — and an eye on economy!

\*Standard on the Monza Club Coupe. Optional at extra cost on the Monza 4-Door Sedan and the Monza Station Wagon. \*\*Optional on 300 and 700 series coupe and sedan.

Wool is a natural for sportswear



*Sabre Slims*

At home... at work... at play! Fall's finest colors in exclusive Italian plaids, from Sabre Slacks, cords and flannels. This is Canada's ONLY truly man tailored sportswear. There is no substitute for WOOL — and Merino wooled in the finest.

Slims \$11.95 Suits \$29.95 Sizes 8 to 20

THE FINEST A LADY CAN WEAR

## PAULETTE FASHION SHOP

CORNER MILL and MAIN STS.

PHONE 51