

New Speyside School Opens This Week

Last night (Wednesday) was an important night in the history of Esquesing Township ratepayers when they officially opened the township's first consolidated school at Speyside. L. L. Skuce, a former Halton County school inspector and now inspector in Trafalgar schools, officially opened the new building situated on Highway 25 just a mile north of the Speyside intersection.

Five of the township's one-roomed schools were closed this summer and the students from these areas are bused to Speyside daily to attend classes at the new structure. Lorne, Dublin, Stone, Waterloo and Dufferin school doors closed in June and their young charges bid farewell to these favorite old buildings where their ancestors learned the three R's.

180 Pupils There
About 180 pupils are housed in Speyside's bright, new classrooms. Simple in construction, the building's classrooms, teachers' office and washrooms are divided in half by a long centre

hallway featuring three feet of clear glass window along the tops of the hall walls. This allows for extra light in the hallway. Blackboards are the newest construction and slanted to aid in readability of the teachers' chalk talks. Modern furniture, cupboards and desks are found in each room for the convenience of pupils and teachers who never had modern equipment to work with in recent years.

Bus service is provided in three buses owned by John Hepburn of Glen Williams. He drives one bus himself and assistants are Sid Williams and Bob McMaster. Only about 10 of the school's 180 enrolment walk to school.

Members of the school board which erected the school are chairman Clarence M. Coles, vice-chairman Rev. G. L. Royal, secretary-treasurer T. Ern Babin and trustees Arthur Roy and Mac Sprowl.

List Staff
Principal is Colin Leitch, formerly of Ingersoll, and he teaches

the senior pupils in grades 7 and 8. A recent Teachers College graduate, Garry Dawkins of Acton teaches grades 6 and 7 while Mrs. Margaret Barber, formerly of Dublin and Lorne schools, teaches the grade 5s. Mrs. Bernice Dekker teaches grades 3 and 4 after teaching three years at Norval. Last year's Dublin teacher, Mrs. Helen Rognvaldson has charge of grades 1 and 2.

Others connected with the school include supply teacher Mrs. H. Coles, custodian James Morrison, music supervisor Mrs. Mary Kliney, health nurse Miss Nancy Macdarmid, dental hygienist Miss Dawn Maywood, and audiometer technician Miss Allison Goodwin. R. F. Bornhold of Milton is the inspector.

Although the school is only three months old, student activities are in full swing. The staff launched a football team this year, complete with cheerleaders, and the students' council is already at work planning student activities.



SIX STAFF TEACHERS at the new Speyside School have charge of 180 students in the five classrooms. In front, the teachers from left to right are Mrs. G. Rognvaldson, grades one and two; Mrs. Bernice Dekker, grades three and four; Mrs. H. Coles, supply teacher; rear row, Garry Dawkins, grades six and seven; Principal Colin Leitch, grades seven and eight; and Mrs. M. Barber, grade five. Below, Mrs. Dekker, leads some of her grades three and four students in a sing-song.



FIVE ONE ROOM SCHOOLS were closed when the new Speyside School opened in September. School Principal Colin Leitch and Students' Council President Faye Graham point to the school's township map indicating the closed schools. They are Waterloo, Dublin, Stone, Lorne and Dufferin one room schools scattered in the north of the township.



GRADES ONE AND TWO are seen in this photo of one of the new Speyside Public School classrooms. Mrs. Helen Rognvaldson, formerly a teacher at Dublin School, is their instructor and the students appreciate having a brand new classroom where they can learn the three Rs the modern way. The school was officially opened last night (Wednesday) in a ceremony in one of the classrooms.



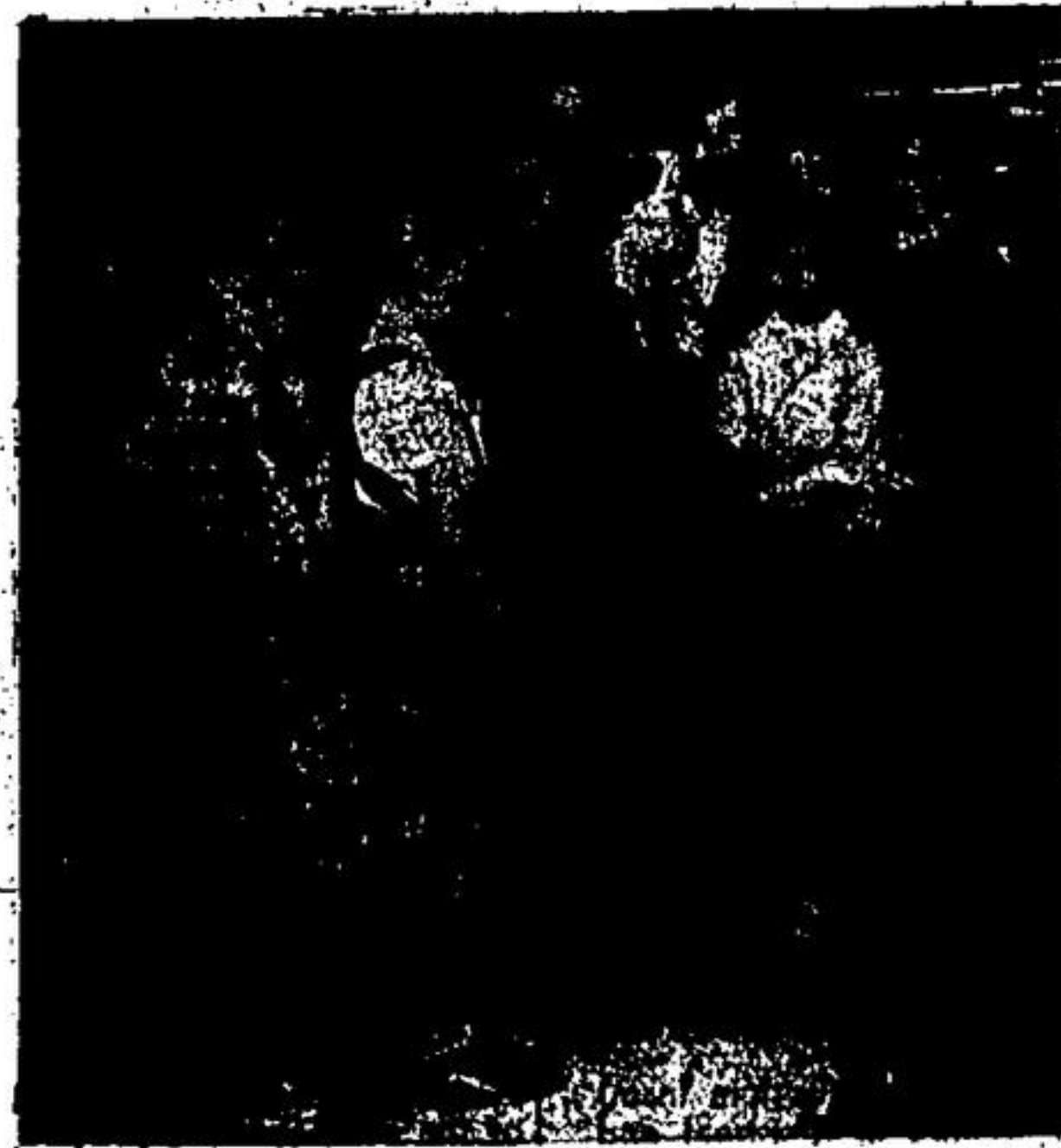
BACK IN SEPTEMBER opening day saw supply teacher Mrs. Howard Coles busily registering her young charges at Speyside. Original enrolment of 169 has climbed now to 180 students and they keep five teachers busy at the new five-room school on highway 25 north of Speyside.

Contractors Work On Speyside School

Last night (Wednesday) a large crowd attended the official opening of the Speyside central school and congratulated the school board and ratepayers on their fine building.

Playing a large part in the erection of the new educational building were the architects, contractor and sub-contractors. All workers taking part in the erection of the new school played an important role in the project and were congratulated during the evening.

The following is a list of the contractors: architects Barnett and Rieder; main contractor, Schiedel Construction Co.; Hespeler; sub-contractors, W. G. Lightly, masonry; R. Musselman, excavating; Kaufman Lumber, supplies; Desco Vitro-Glabe, supplies; Thackery Industrial Maintenance; American Electric; J. T. Hepburn; Knight Services; Sherwood Windows; Einwechter and Muller, painting; Dominion Sound Co.; Westford Products; Muckart Plumbing and Heating and Sarnia Bridge.



DIDN'T KNOW

Driver licensing is one of the Government's first lines of defence against traffic accidents, says the Ontario Safety League. A motorist in New Castle, Ind., has come up with a new excuse for driving without a licence. Arrested when his car rammed a utility pole, the man explained: "I didn't think I needed a licence, because I don't know how to drive a car."

CORRECT BY HAND

Never change lanes without signalling, the Ontario Safety League asks all drivers. But remember that a turn signal often continues to blink after a gradual lane change, unless it is corrected by hand. Unintentional signals confuse and inconvenience other drivers. For example, a car in the passing lane showing an unmeant left-turn signal causes following vehicles to switch into the driving lane unnecessarily.

Compliments...
TO ESQUESING SCHOOL BOARD
and Ratepayers
on the opening of the
SPEYSIDE CENTRAL SCHOOL
BARNETT AND RIEDER - ARCHITECTS

Congratulations

... TO SCHOOL AREA NO. 1
on their fine new Esquesing Public School

WE ARE PROUD TO HAVE HAD THE OPPORTUNITY TO DO
THE PLUMBING AND HEATING IN THIS SCHOOL.

G. R. MUCKART & CO. LTD.

PLUMBING, HEATING & ELECTRICAL CONTRACTORS
Est'd. Since 1926

Phone TR. 7-3592

15 Mill St., Georgetown

CONGRATULATIONS

on the OFFICIAL OPENING of the

New Speyside Central Public School

SERVING ESQUESING TOWNSHIP

IT HAS BEEN A PLEASURE TO HAVE PLAYED A PART IN THE GROWING
EXPANSION OF THE RATEPAYERS' AND SCHOOL BOARD'S EDUCATIONAL
PROGRAM.

American Electrical Contracting Ltd.

290 Eglinton Ave. W.

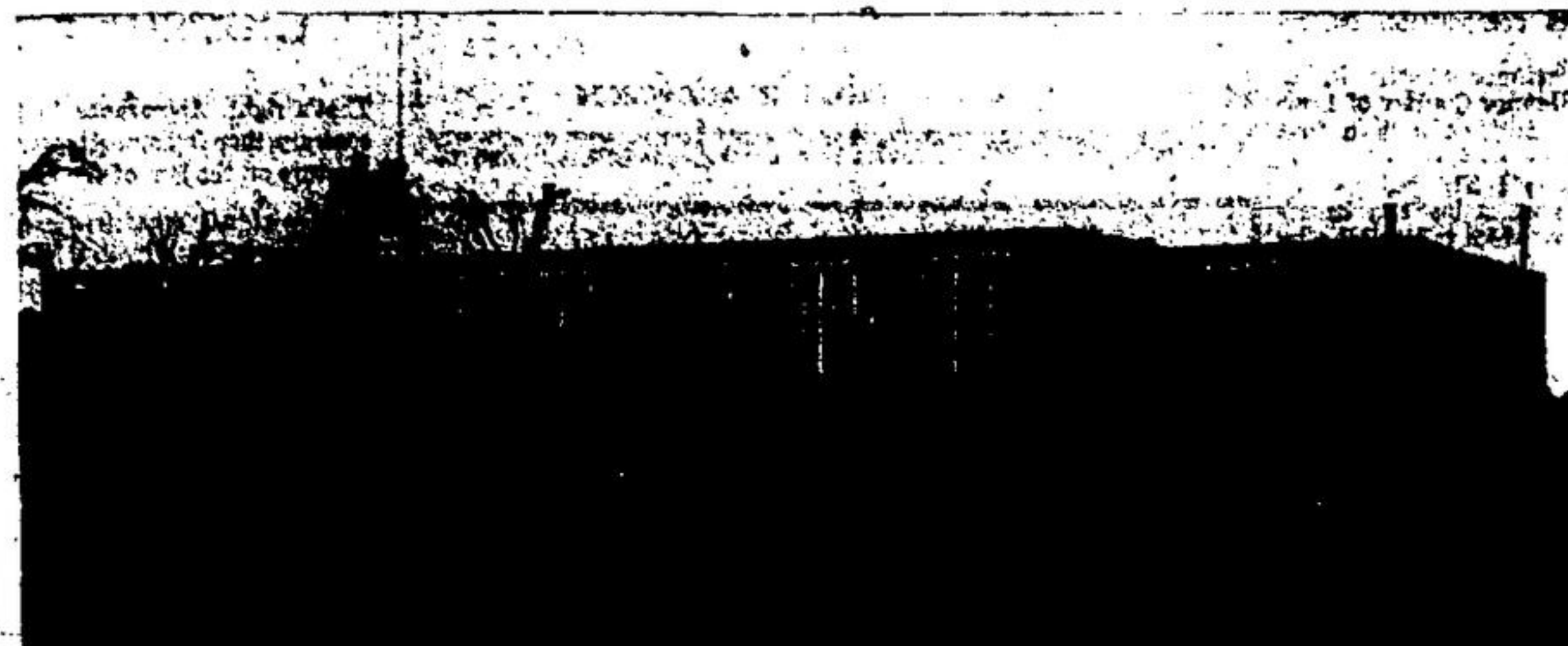
Toronto

RU 9-1858

ANOTHER STEP IN PROGRESS

THE RESULTS OF
INDUSTRY, INTEGRITY AND ENTERPRISE

SPEYSIDE CENTRAL PUBLIC SCHOOL



SHOWN HERE IS THE SPEYSIDE CENTRAL SCHOOL
BUILT TO SERVE THE CHILDREN OF ESQUESING SCHOOL AREA NUMBER ONE.

GEORGE SCHIEDEL CONSTRUCTION COMPANY LTD.

29 QUEEN ST. W.

HESPELER, ONTARIO

Congratulations to the School Board and Ratepayers of Esquesing Township on this solid achievement.

We of the Schiedel Construction Co. Ltd., are proud to have been chosen as General Contractors for the new modern Speyside Central School.

It has been a pleasure to be part of the growing expansion of Esquesing Township. Another example of careful planning and achievement toward better education.

We wish to thank the Esquesing School Board and Architects for their wonderful co-operation.



"It's time to remember" + GIBSON Christmas Cards

NON-ASSORTED PACKS OF 25's for \$1.00 - \$1.50 - \$2.00 \$3.00

ASSORTED BOXES 59c to \$1.50

PERSONALIZED CARDS

by INTERNATIONAL ARTCRAFTS
A LARGE ASSORTMENT TO CHOOSE FROM
ORDER EARLY FOR BEST SELECTION
10% DISCOUNT

Dills STATIONERY
54 MILL ST. PHONE 608

PHONE OLIVER 6-2803