



● PANORAMIC VIEW OF THE ARMSTRONG BROS. GEORGETOWN QUARRY ●

ARMSTRONG BROS.

announce the opening of their

GEORGETOWN QUARRY

LOCATED 4 MILES NORTH-WEST OF GEORGETOWN OFF NO. 7 HIGHWAY

ALL SIZES OF CRUSHED STONE AVAILABLE
AT THE QUARRY OR DELIVERED



WAGON DRILLS POWERED by portable compressors are used to prepare the section of rock to be blasted.



AFTER THE DRILL HOLES are loaded with dynamite the charge is detonated. Seven thousand tons of rock were blasted in this photo.



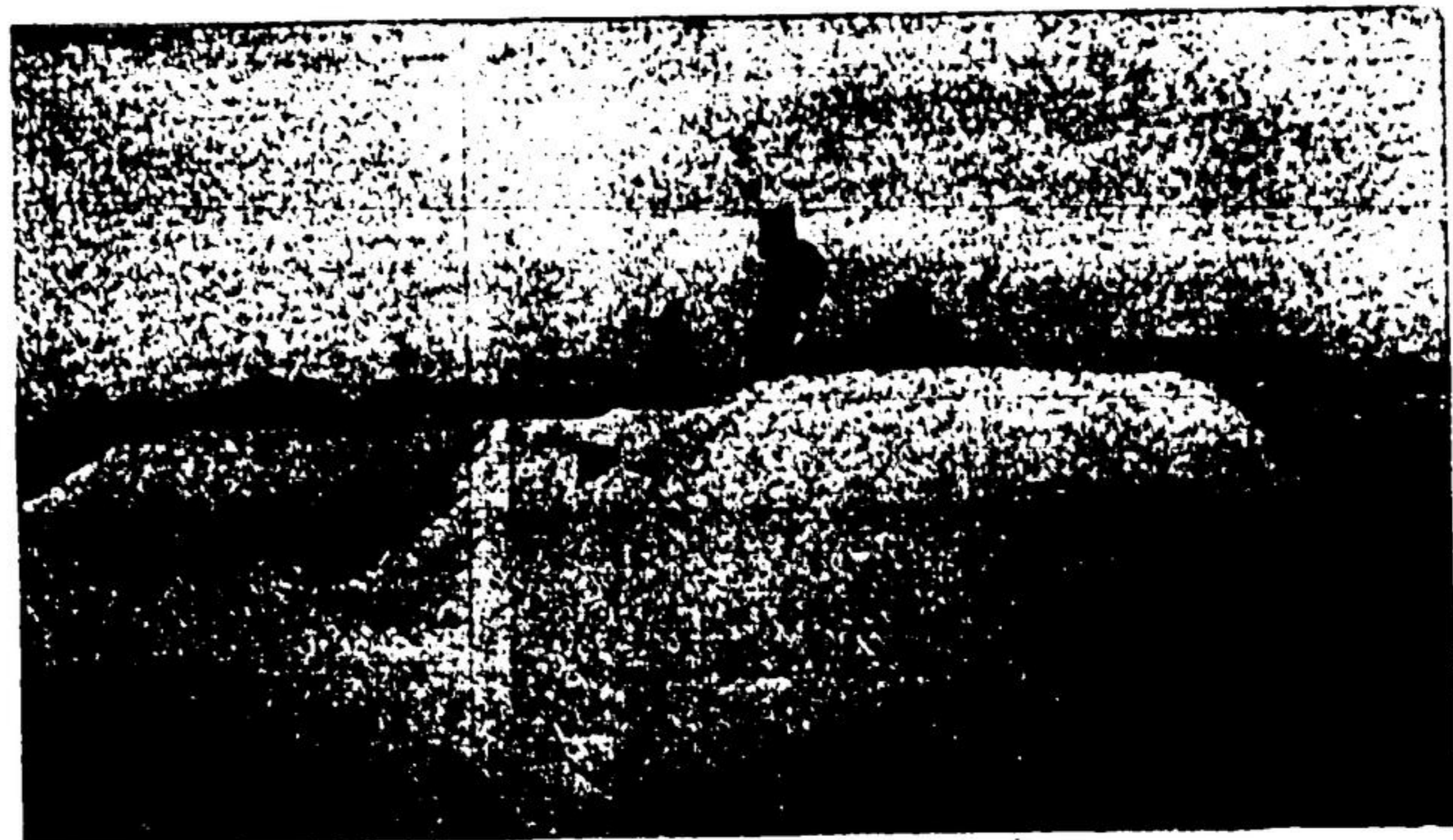
FOLLOWING THE BLASTING power shovels are used to load the broken rock into 20 ton Euclid trucks to transport the material to the crusher.

TELEPHONE

GEORGETOWN
TR 7-4221

BRAMPTON
GL 1-0690

TORONTO
EM 3-0024



ARMSTRONG BROS.

COMPANY LIMITED

Head Office — Brampton, Ont.