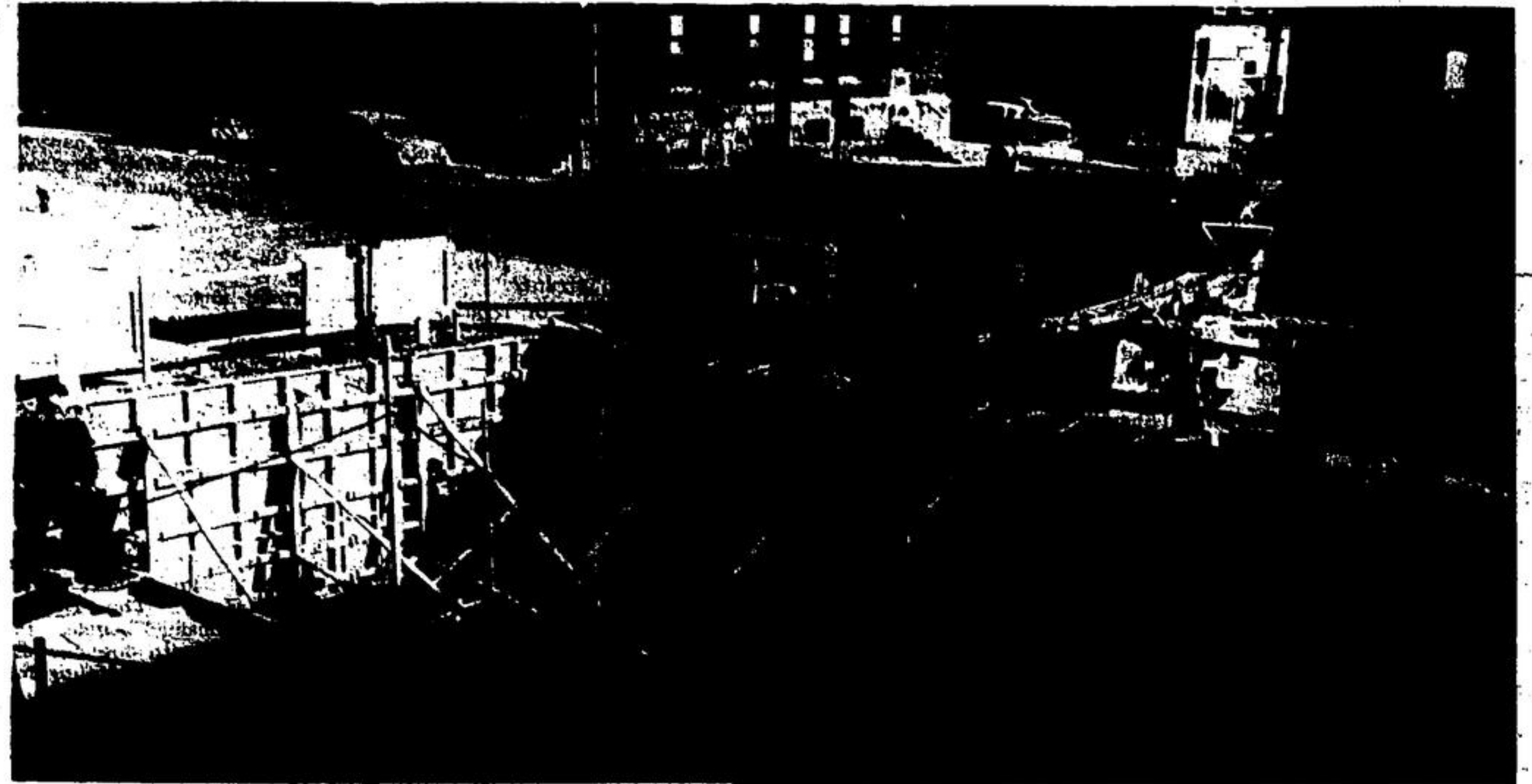


1956 YEAR OF CONSTRUCTION, IMPROVEMENT HERE



WORK IS SHOWN in progress on the new M. Z. Bennett school, in November. Workmen are shown here constructing the brick walls. Arrangements are being rushed by the school board to obtain necessary approval for the expansion to a 12-room school following the fire.



FOUNDATION WAS POURED for the new Bank of Montreal building in November. The structure at the corner of Mill and Willow streets will be of stone, brick and aluminum. It is expected the building may be completed in January.



COORDINATION OF MANY professions, skills and trades was necessary in laying natural gas mains to serve Acton and the transmission line to serve the three North Halton towns.

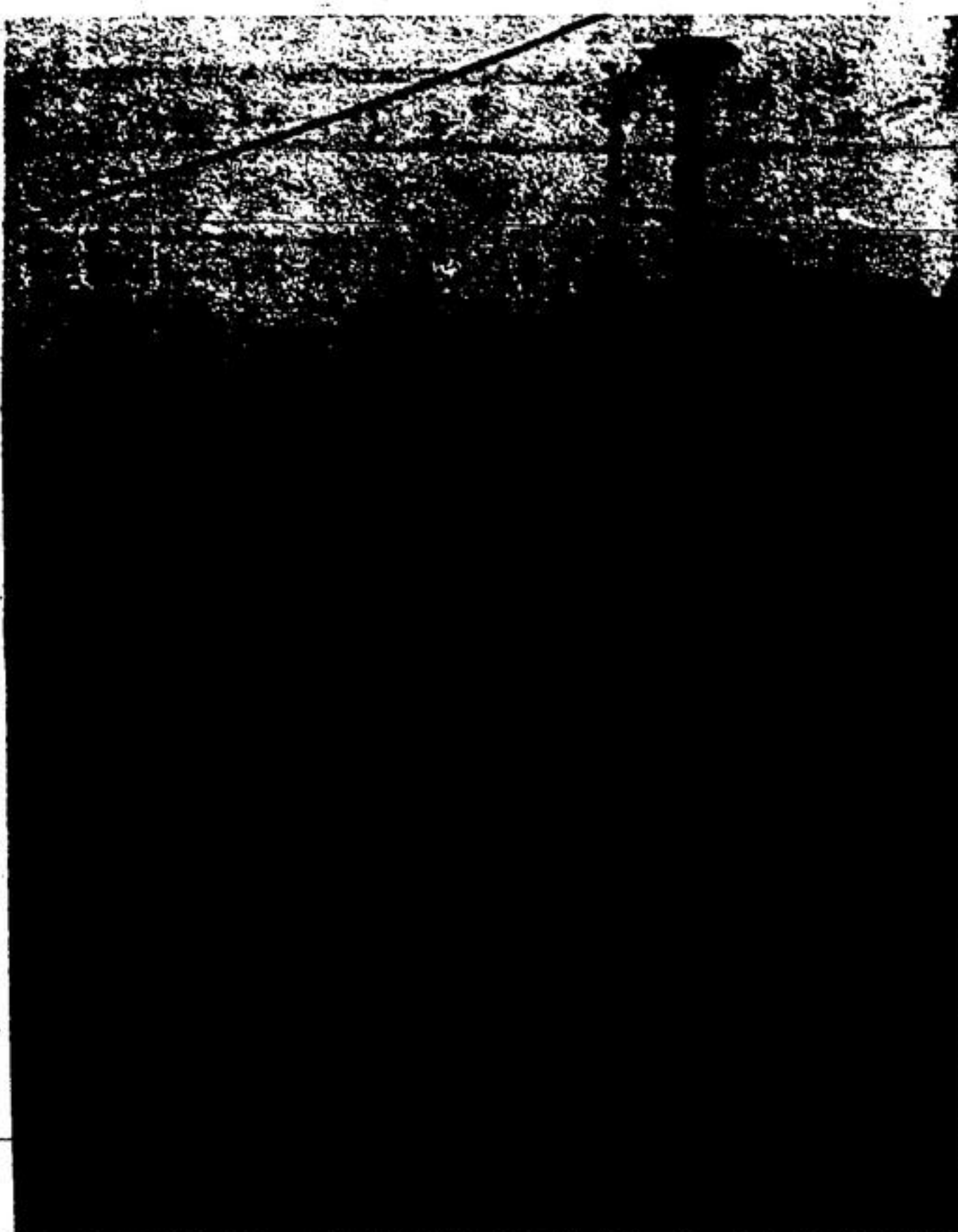


NEW SIDEWALK is poured on Mill St. in early November. Here town workmen are shown directing the ready-mixed cement for the area between John and Elgin Sts.

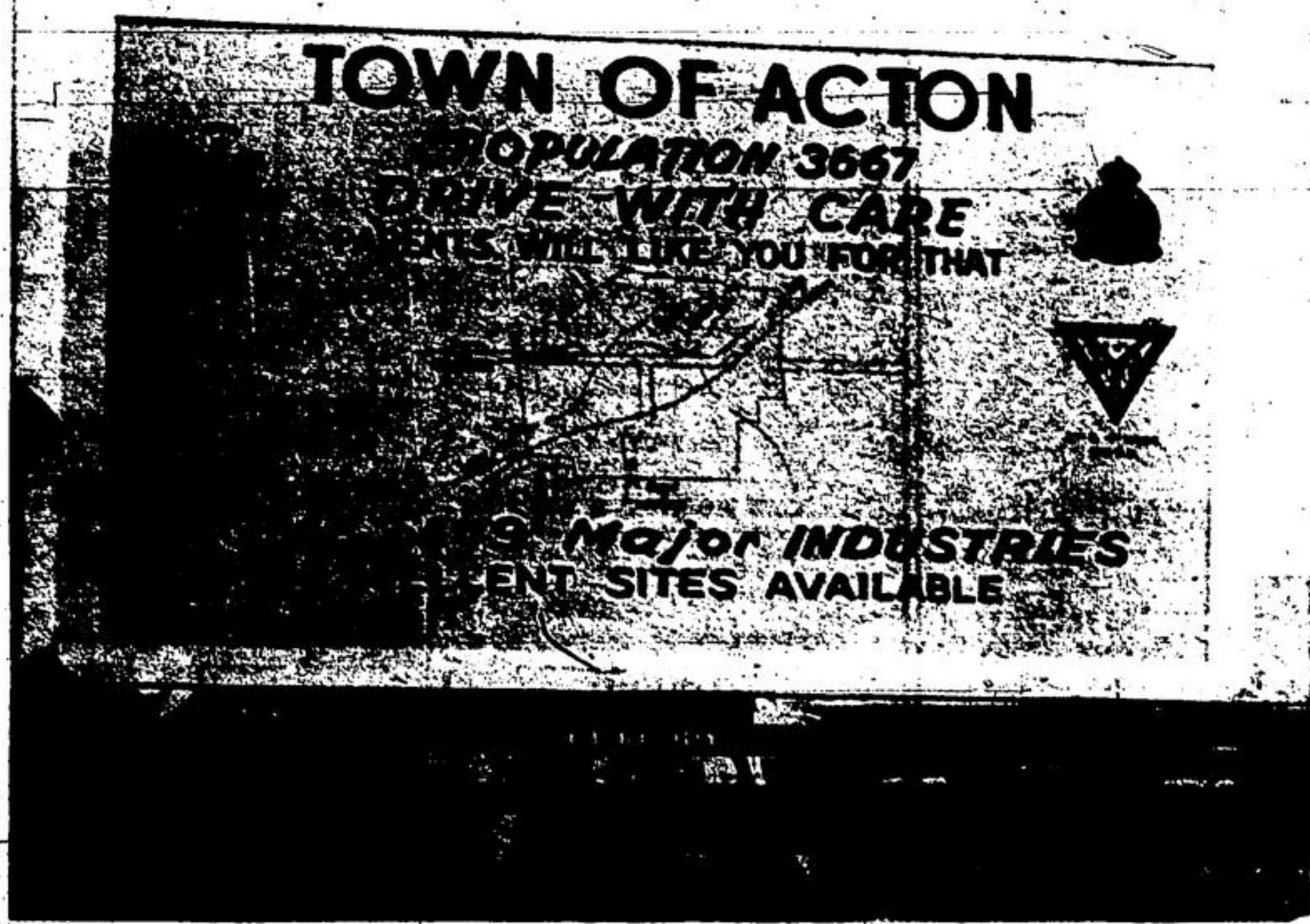


EAST END CONSTRUCTION is typified by this power shovel seen gouging out the foundation for the new Christian Reformed Church. A Pentecostal church was also being planned in October.

Staff Photographs Tell Acton Story Weekly Reflect Activity in Town and District News



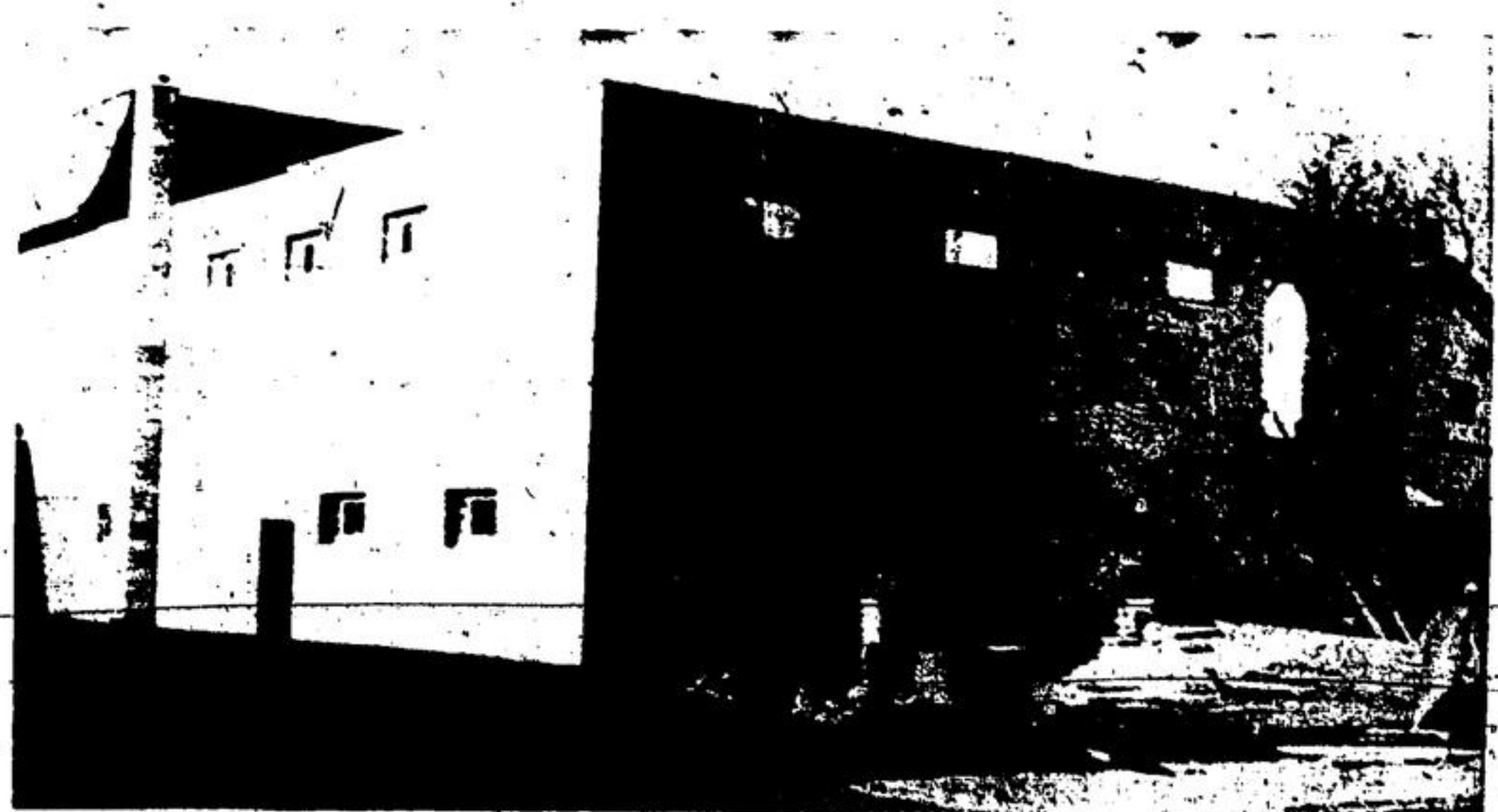
HARDTOPPING ROLLED down on Acton streets during October when Rayner. Construction crews put two layers over the regraded six miles of Acton roads. Grading and levelling continued ahead of the paving program.



ACTON'S NEW TOWN SIGNS were erected in August as the efforts of the Chamber of Commerce supported by other local organizations, culminated at three approaches to Acton. Background, with highway and rail map in the centre, is yellow and border is in white. Chamber of Commerce, Legion, Rotary and Y's Men's emblems are in usual colors.



NEW MARIA ST. BRIDGE was shown under construction in May, replacing the old wooden structure. The replacement followed years of discussion.



ACTON LEGION enlarged its quarters with a \$25,000 renovation and extension project. A large new auditorium takes up the entire second floor of the building.