

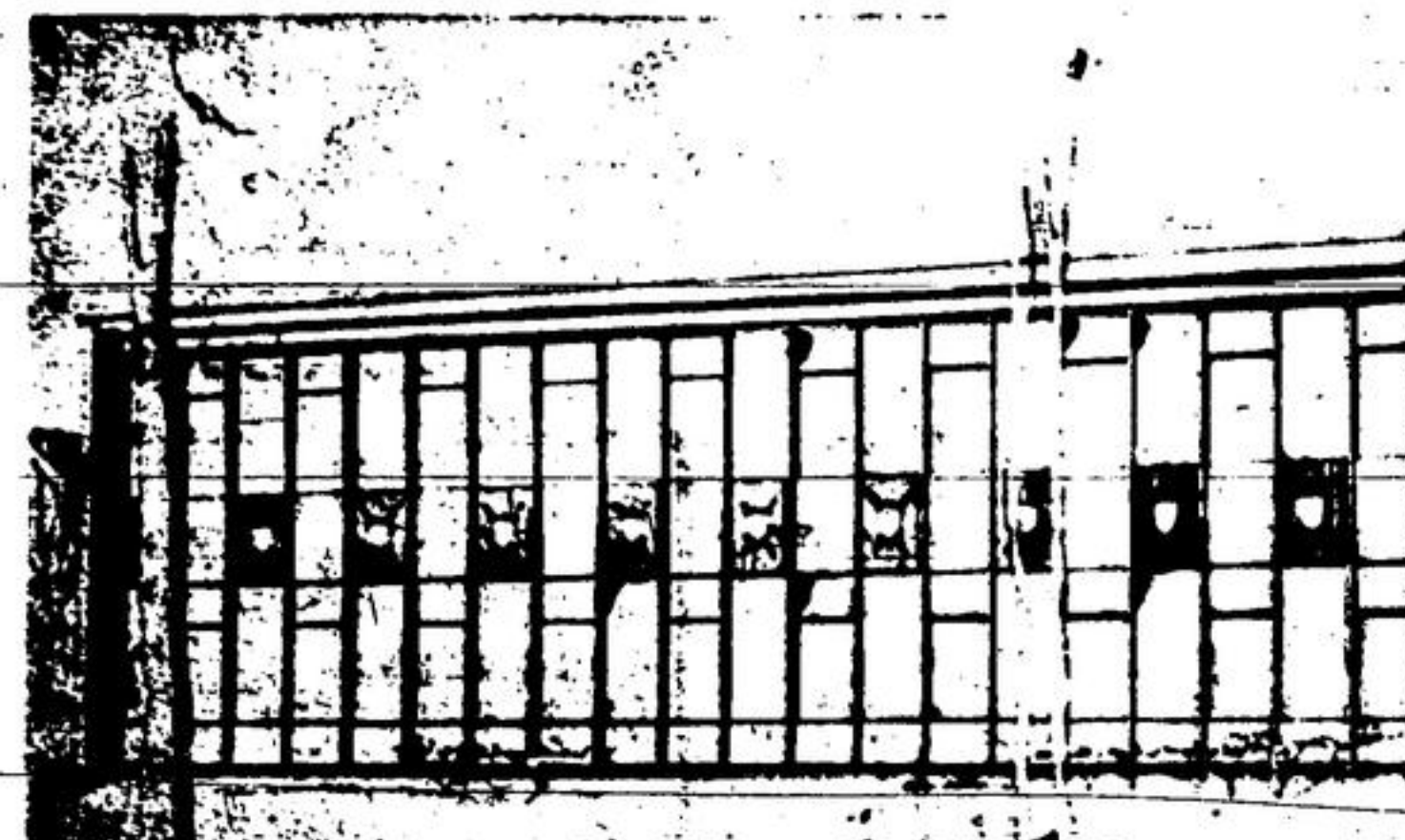
Town's Growth in 1955 Sets Pace Hard to Surpass in the New Year

Acton's Area, Assessment Population All Up in '55

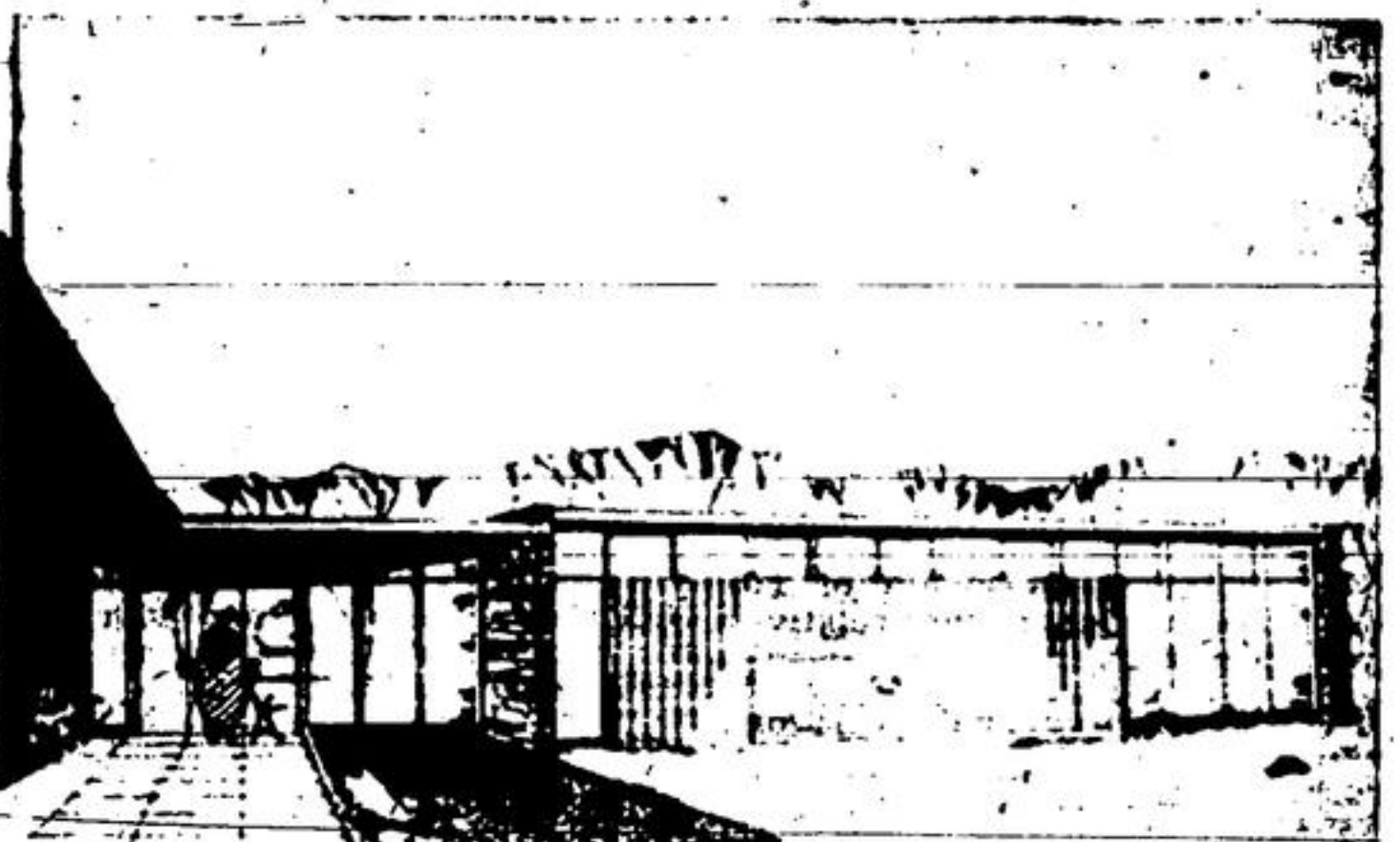
1955 for Acton was a year of unprecedented growth, a year of pace-setting progress that will keep 1956 moving to better it. The town's boundaries were enlarged by 465 acres; its population rose by over 300 new citizens; more than 100 new homes took shape in three subdivisions and on private lots; assessment rose to over \$3,000,000, almost a quarter of a million above 1954; established industry carried out expansion plans; three natural gas companies competed for rights to serve the town and area's potential consumers. All these and other factors moulded the year's progress. At the top of the page are photos taken at the 240-lot Lakeview subdivision (left) and at the 200-lot Glenlea subdivision. At right service installation work, undertaken by the town, moves ahead into the 14-lot Cobble Hill subdivision which was completed this year. Now nearly 60 houses are occupied at Glenlea, many more near completion. At the Lakeview subdivision many of the first block of 28 homes are finished or nearly finished.



THE SCHOOL CREEK, a growing problem for recent Councils as silt built up the bottom and hampered drainage flow in the Main St. area, was given a major overhaul this autumn from the school to Fairy Lake. The town widened the creek to over 10 feet, also increased the depth. Further drainage work is planned for next spring in this section of town.



A NEW CIVIC CENTRE was dangled before the ratepayers late this year, as growing administration and works requirements moved Council to probe for more space. Taken to a vote in last month's municipal elections, the question of an estimated



\$200,000 total cost was turned down decisively, by a vote of 595 to 30. The building, figured to cost \$130,000, is shown above in an architect's perspective. Plans to renovate the present town hall were discarded as too costly.



PANGS OF GROWTH affected Acton in other areas. The need to renew the Maria St. bridge (above) with a stronger, larger structure is now being threshed out; at the new high school (below) an addition was necessary this fall, only a year after the school was finished; Acton, with Georgetown and Milton, sponsored a major bid for new industry at the Trade Fair where E. E. Barr (right) managed the Urban Board's booth.

ANNEXATION of 465 Esqueping township acres came into effect this March. The Municipal Board's award increased the town's acreage from 514 to 979, almost doubling Acton's physical area. The new boundaries enclose the Beardmore Co. property and Wool Combing plant. Staff drawing at right shows in black the boundaries at 1954, shaded area shows new limits. This month settlement was made with Esqueping township for compensation, payment of \$6,000 over a three year period. Within a year of the order becoming effective, a large part of the annexed area will be built up in new homes.

