

LOOK what ROY'S ELECTRIC brought to ACTON

SEE . . .

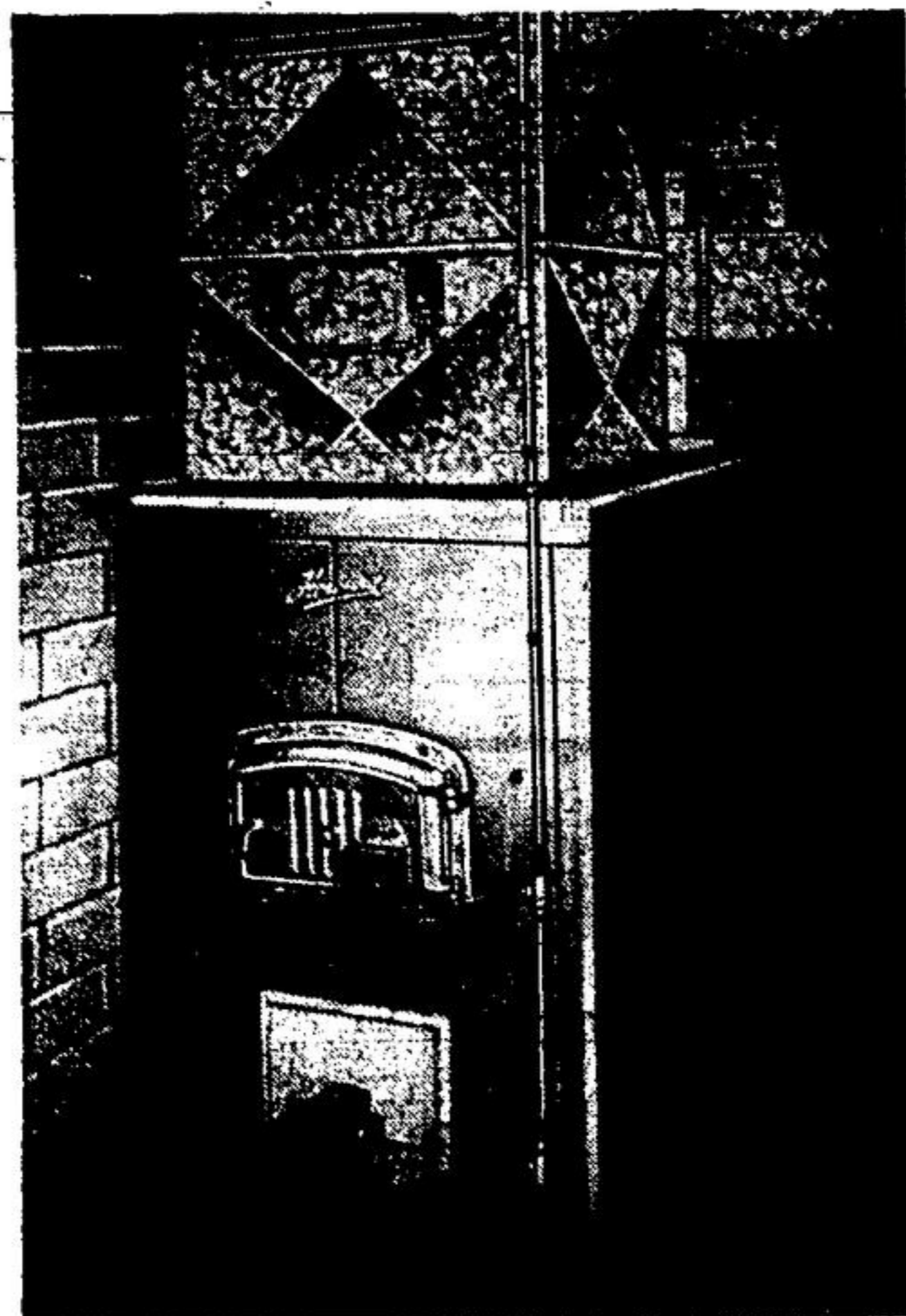
The wonderful new heating system installed at the Micro Plastics Limited, largest extruders of plastics in Canada. Howard "South-Wind" For automatic oil burning and air conditioning.

- FULLY AUTOMATIC
- CLEAN AS A WHISTLE
- PENNIES SAVED ON FUEL COST
- OPERATES QUIETLY

THE HOWARD OIL-O-MISER BURNER . . . silent . . . perfectly matched to the capacity of the air conditioning unit for efficiency.

THE HOWARD "SOUTH-WIND" AIR CONDITIONER has the chromium nickel stainless steel fire chamber. Heats up in seconds.

THE HOWARD HY-DUTY CENTRIFUGAL FAN unit silently circulates the air through the "South-Wind" and the entire house.



ABOVE IS MODEL SWP6
—ACTUAL PHOTO

| Model No. | Capacity B.T.U. per hour | Dimensions of unit | Fan Capacity | Fan Motor |
|-----------|--------------------------|---|--------------|------------|
| SWP6 | 500,000 | Width 4'5" Length 8'11 1/2" Height 6'2" | 5250 C.F.M. | 1 1/2 H.P. |

| Heating Surface | No. of Filters | Smoke Collar | Recommended Chimney | Shipping Weight |
|-----------------|----------------|--------------|--------------------------|-----------------|
| 197.5 sq. ft. | 10 | 12" | 35'0" high 12x15 Flue | 2250 lb. |

These heating systems are manufactured and engineered by Howard Furnace and Foundries Limited. There is no guesswork which enables us to give our customer the utmost in efficiency and workmanship.

IT'S GRAND . . .

says William Bracken, Arthur St. about his brand new unit recently installed. . . And for these hot summer days you can't beat its cooling system.

HOWARD NUE-BOY

- Operates economically
- Top-notch quality
- As dependable as it is durable
- Neat and compact in appearance

THE HOWARD OIL-O-MISER OIL BURNER operates quickly to give you the heat you want and eliminates the long "fuel-wasting" periods and the mess of soot and carbon.

THE HOWARD "SOUTH-WIND" HUMIDIFIER makes control easy. Its water metering device is standard equipment.

THE "NUE-BOY" AUTOMATIC CONTROL SYSTEM gives you the desired heat and is complete with safety devices against overheating.

| Model No. | Capacity B.T.U. per hour | Dimensions of Unit | Fan Capacity | Fan Motor |
|-----------|--------------------------|---------------------------------------|--------------|---|
| SWHO | 80,000 | Width 24" Length 25" Height 60" | 900 C.F.M. | 1/4 h.p. Special Air Conditioning Type 25 or 60 cycle |

| Heating Surface | Recommended Chimney | Smoke Collar | Shipping Weight |
|-----------------|--|--------------|-----------------|
| 26 sq. ft. | 30' above burner 8"x8" or equivalent area | 7" | 400 lb. |



TO THE LEFT IS MODEL SWHO
—ACTUAL PHOTO

● **MR. EUGENE BRAIDA** of Mill St., Acton, says—Last season I heated my shoe store, 20 ft. wide, 60 ft. long, 10 ft. ceilings, with a Howard SWP1, 100,000 B.T.U. for \$89.00.

● **MR. JOHN LOVELL** of Frederick St., Acton, says—Last season I heated my five room bungalow, 28 ft. wide, 32 ft long, 8 ft. ceilings, plus a down-stair bathroom and laundry room with a Howard Nue-Boy 75,000 B.T.U. for \$89.00

ROY'S ELECTRIC

EXCLUSIVE DEALER FOR HOWARD

PHONE 32w4