

BILTON & PERRY LIMITED

PLUMBING - HEATING - AIR CONDITIONING -
AND SHEET METAL CONTRACTORS

Acton - - - - - Ontario

Russ Perry, 269W - PHONES - Ed Bilton, 341W

CARROLL'S

Save You Money!

- Sweet Pickles 48-OZ. JAR 57c
- Dill Pickles 48-OZ. JAR 31c
- BROKEN OLIVES 12-OZ. JAR 25c
- CLARK'S SOUPS 2 TINS 17c

- PARAMOUNT PINK SALMON 1/4-LB. TIN 23c

- PARD DOG FOOD 2 1-LB. TINS 25c
- SARDINES BRUNSWICK 3 TINS 25c
- KRAFT DINNERS 2 PKGS. 27c
- SLICED CHEESE 1/2-LB. PKG. 31c
- GOLDEN TIP TEA 1/2-LB. PKG. 55c

- SHUR SWEET CALIFORNIA FRUIT COCKTAIL 28-OZ. TIN 45c

- PEACHES Bright's 15-OZ. TIN 21c
- PEANUT BUTTER 16-OZ. JAR 35c
- JELLY POWDERS LUXUS 3 PKGS. 28c
- C. & B. DESSERT 2 4-OZ. TINS 25c
- Blended Juice 2 20-OZ. TINS 29c

- AUSTRALIAN SEEDLESS RAISINS 2 LBS. 31c

- Tomatoes METCAL'S CHOICE 2 20-OZ. TINS 37c
- TOMATO JUICE METCAL'S 48-OZ. TIN 23c
- GOLDEN CORN LYNN VALLEY 2 20-OZ. TINS 25c
- Soup Mix LIPTON'S CHICKEN OR VEGETABLE 2 PKGS. 25c
- AYLMER PEAS CHOICE UNGRADED 2 20-OZ. TINS 31c

- SPAGHETTI OR READY OUT MACARONI 2 LBS. 19c

- OLD DUTCH CLEANSER 2 TINS 25c
- Tangerine JUICE 2 20-OZ. TINS 29c
- Tropical Fruit Salad 20-OZ. TIN 33c
- BARTLETT PEARS AYLMEER 15-OZ. TIN 27c
- HEINZ BABY FOODS 3 TINS 27c
- Wax BEANS LYNN VALLEY 20-OZ. TIN 13c
- Green Beans PRIDE OF 15-OZ. OKANAGAN TIN 16c

- NEW! READY SWEETENED CEREAL SUGAR CRISP EAT THEM LIKE POPCORN 2 PKGS. 35c

- Special Offer - MASTER DOG FOOD 3 15-OZ. TINS 27c

- CELLO TUBES TOMATOES - - - - - Each 29c
- FRESH IMPORTED GREEN BEANS - - - - - lb. 29c
- FIRM RIPE BANANAS - - - - - lb. 19c
- FLORIDA SIZE 250 ORANGES - - - - - Doz. 37c

FRESH DAILY - Rhubarb, Grapes, Celery, Lettuce, Radishes, Spinach, Salads

Poe's Corner
"MY SANCTUARY"

"Home" is where you make it,
And the door is open wide,
And you stand with hand extended
To the Friends, who stand out-
side.

It may not be a palace,
But a place of humble birth,
And the welcome you receive,
Will show just what it's worth.

My "Home" is my "Sanctuary"
On the hillside so fair,
It slopes to the swamps
With snow banks piled there.

I sit at my kitchen table,
And look through the pane,
And see a sight to behold,
The fields are white again.

A sight so sweet to behold,
Red tanager, snow bunting and
blue jay,
Their beauty unfold.

Eight blue jays I counted
Picked the food with ease,
While one in an apple tree,
Was a sentinel, if you please.

A shrill cry wounded:
The little heads whirled;
And there standing by,
Was a little grey squirrel.

So "Home" is my sanctuary:
Where love and peace abide;
May we be spared to carry on
And feed the "Birds" outside.

Polly

GIFT TO COVENTRY

By means of concerts and recitals,
the Canadian College of Organists
is raising funds to provide a new
organ for Coventry Cathedral, Eng-
land. \$22,000 has already been sent.

Hornby Forum Entertains; Paul Fisher Gives Views On Marketing Situation

On Monday night January 29th, Halton Farm Forums met together in various places and spent the night in various ways. The Broadcast look, the form of a debate, taking place at the Canadian Federation of Agriculture meeting being held at Calgary, the subject being "Wheat pools versus Open Markets." This proved a very timely topic for Forum members, and was listened to with a great deal of interest.

Bell's and Zimmerman, Forum, like a number of other groups, discussed the Milk Pooling Questionnaire. The latter forwarded the following answers, "Master receiving plants throughout Ontario would be a good thing, providing the government would amend the Farm Product Marketing Act giving the producers association power to own and set-up a marketing agency."

"Cream should not be included in the pooling system," they continued, "because the production and marketing of cream is much different from that of whole milk."

"Those who produce high quality milk should be compensated by paying a premium price according to quality."

Two thirds of the producers should be required to make pooling successful.

"In determining the quality of

milk, grading should be done according to butter-fat and bacterial count, carried on by a government grader. The grader should be paid by the government."

Hornby Forum entertained in Hornby Hall, with Boyne, Coyne and Omagh Forums responding to the invitation, to hear Mr. Paul Fisher express his views on the marketing situation. There were about 70 people present.

Kilbride Forum entertained the Limestone Forum at the Hall, and after listening to the broadcast, Mrs. J. Henry welcomed the guests and had chairs and tables arranged for the gathering to play Court Whist. At the conclusion of the game, which was very much enjoyed by all, Mr. Harold Speers, secretary of Nelson-Federation of Agriculture showed films. First was a film of the Blue Bloods of Canada, which proved very educational, while the second film was pictures he had taken himself last summer while teaching on the shores of James Bay.

A bounteous lunch was served by the hostess as all sat around laden tables. Mr. Harry Richardson, President of Limestone Forum voiced the appreciation of Limestone members for the social meeting, not forgetting the lunch, and hoping to see all members of Kilbride at a Limestone Forum meeting in the near future.

THE PRICE OF COCA-COLA

Including Sales & Excise Taxes

- 7c PER BOTTLE
- 36c PER CARTON OF 6 BOTTLES
- 7c PER GLASS AT FOUNTAINS

Now on Display ...

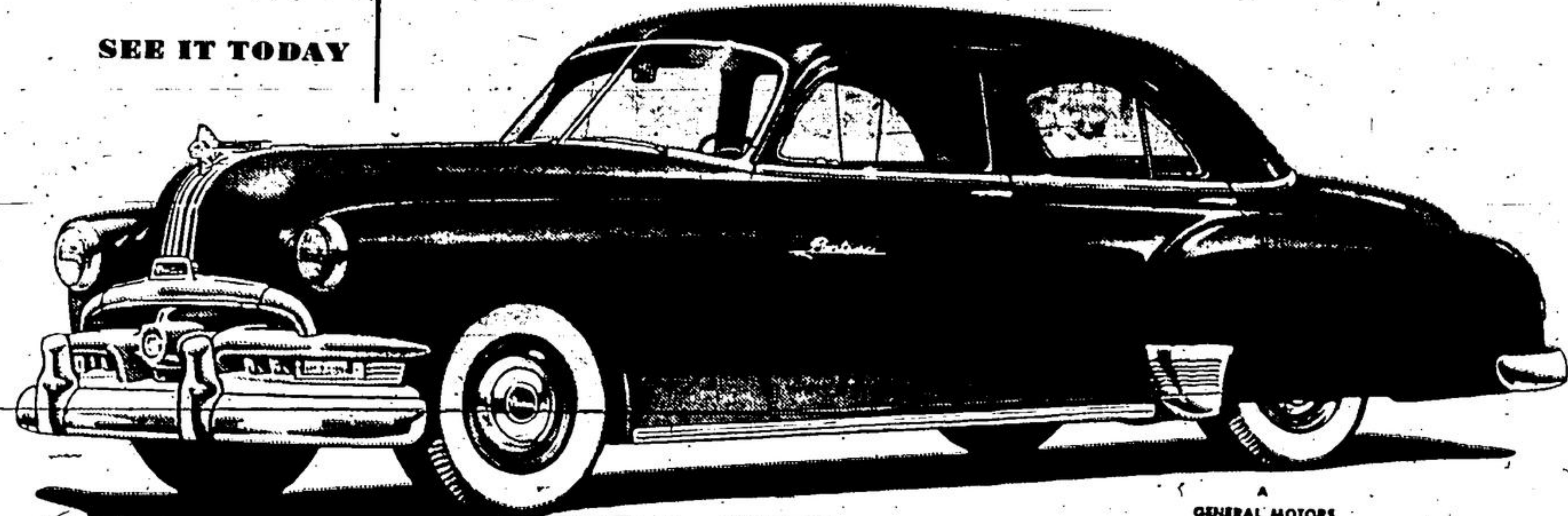
New Silver Anniversary

Pontiac

WITH SENSATIONAL AUTOMATIC TRANSMISSIONS



SEE IT TODAY



A GENERAL MOTORS VALUE

Come in and See why Feature for Feature and Dollar for Dollar you can't beat a Pontiac!



SENSATIONAL NEW AUTOMATIC TRANSMISSION AVAILABLE ON FLEETLEADER DELUXE MODELS. In all New automatic driving comes to the low-price field! In all 1951 Pontiac Fleetleader Deluxe models you can have the 1951 Pontiac Fleetleader Deluxe models you can have the wonderful ease and smoothness of PowerSlide—a proved, completely automatic transmission. There is no clutch pedal. And PowerSlide is as easy on your car as well as on you! In normal driving no gears ever shift; for PowerSlide is a torque converter drive. Wear is reduced, efficiency increased. Your car's life is longer, its trade-in value higher! PowerSlide is optional equipment at extra cost on Fleetleader Deluxe models.



THE MOST BEAUTIFUL THING ON WHEELS... with distinctive new Gull-Wing Styling!
TWO SENSATIONAL AUTOMATIC DRIVES... POWERGLIDE on Fleetleader Deluxe, HYDRAMATIC Drive on Chief and Streamliner.
SILVER STREAK PERFORMANCE... two engines, powerful straight eight or dependable, economical six.
LUXURIOUS NEW INTERIOR... beautiful new fabrics, new color harmonies, comfortable deep-seat seats.
NEW IMPRESSIVE SWEEPSTREAM FENDER TREATMENT... protected by massive wrap-around bumpers.
SWEEPVIEW VISION... wide windows, extra broad curved windshield, slim corner posts.
BODIES BY FISHER... strong, rugged, beautifully styled and built of all steel.
EYE CONTROL INSTRUMENTS... entire panel easy to see, easy to read.
YEAR-AROUND COMFORT CONTROL... perfected twin-duct heating and ventilating.
PACK-AWAY TRUNK... extra-large, fully-lined with self-locking counter-balanced lid.
BUILT TO LAST 100,000 MILES... in the Pontiac tradition of economical, dependable service for a long, long time!

LORNE GARNER MOTORS LTD.

MAIN at BOWER

ACTON ONT.

BUILT IN CANADA • PROVED IN CANADA • FOR CANADIANS