

Pool's Corner

God's Gift to the World

God's gift to the world—ah, what can it be, Beauty and Peace and the right to be free!

NEW FIBRE

A British discovery, new synthetic fibre, claimed to feel like silk and twice as strong as cotton, is reported in The Financial Post.

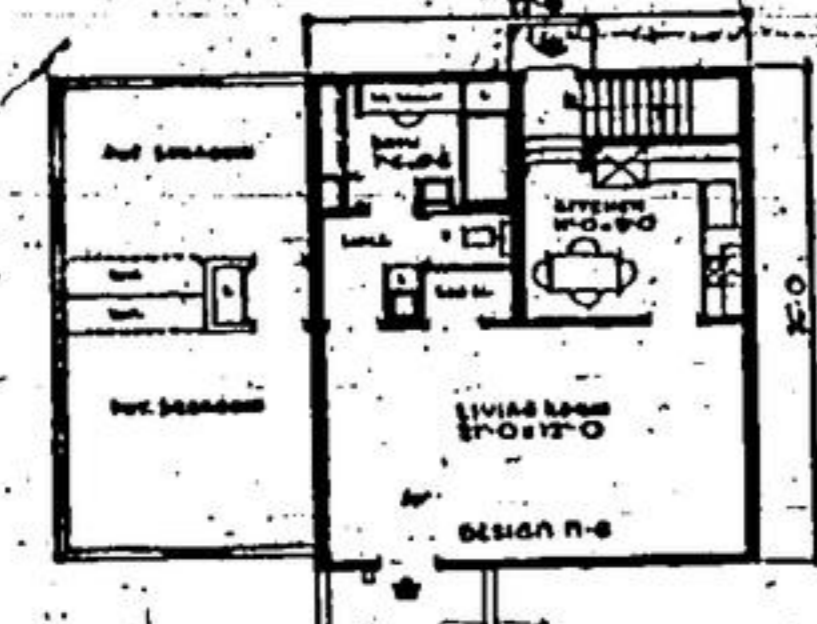
Van Wyck Cleaners

Pick-up and Delivery Our truck is on your street every day PHONE 272

E. P. HEAD Optometrist

Eyes Examined Scientifically GLASSES FITTED

GUELPH 58 St. George's Sq. PHONE 1529 Established 28 Years



THE NEWTON can be built in units. The first unit covers an area of only 22 feet by 26 feet and provides the equivalent of a one-room and kitchenette apartment.

The Newton's combination bathroom and dressing room has a large wardrobe as well as a linen cabinet and a built-in dressing table.

This is an excellent arrangement in a small space. The Newton's bedroom-unit is set back slightly to break the wall and roof lines

Maps of Ontario's Forest Areas Made

Considered the most accurate planimetric maps of Ontario yet made, first in a projected series of sectional maps, plotted from aerial photographs, covering the province's forested areas, have been printed for distribution.

They are being published by the Army Survey Establishment, Department of National Defence, through a co-operative agreement with Ontario, both having right to distribute them.

The extreme accuracy and detail of the maps were obtained from aerial photographs. Map makers of the Department, with special instruments, plotted the course of rivers, heights of land, contours of lake shores and highways and other essential features just as they appear on the aerial photos.

when they are needed at a later date.

A full basement under the first unit of the Newton would not necessarily have to be extended since no further plumbing is necessary in any future addition.

The Newton's plan deserves close study. It is one solution of the problem of building suitable living accommodation within a limited budget.

The Newton's first unit has a floor area of 528 square feet. There is a volume of 10,033 cubic feet, including the basement.

Maps of Ontario's Forest Areas Made

Considered the most accurate planimetric maps of Ontario yet made, first in a projected series of sectional maps, plotted from aerial photographs, covering the province's forested areas, have been printed for distribution.

They are being published by the Army Survey Establishment, Department of National Defence, through a co-operative agreement with Ontario, both having right to distribute them.

The extreme accuracy and detail of the maps were obtained from aerial photographs. Map makers of the Department, with special instruments, plotted the course of rivers, heights of land, contours of lake shores and highways and other essential features just as they appear on the aerial photos.

The extreme accuracy and detail of the maps were obtained from aerial photographs. Map makers of the Department, with special instruments, plotted the course of rivers, heights of land, contours of lake shores and highways and other essential features just as they appear on the aerial photos.

Sunday School Lesson

SUNDAY, JANUARY 28, 1951 JESUS TEACHES CONCERNING THE KINGDOM

Golden Text.—Take heed what you hear: the measure you give will be the measure you get, and still more will be given you. Mk. 4:24.

Lesson Text.—Mk. 4:1-26, 26-34. EXPOSITION: 1. Jesus as an open-air teacher. 1-26.

This, like every other great sermon recorded in the Bible, was preached in the open air. It would be well if our great preachers also would go to "the sea side."

But Jesus did not consider it beneath His dignity (Jno. 15:20). Jesus went to the sea side because that was where He would get the crowds.

The Newton's plan deserves close study. It is one solution of the problem of building suitable living accommodation within a limited budget.

The Newton's first unit has a floor area of 528 square feet. There is a volume of 10,033 cubic feet, including the basement.

Maps of Ontario's Forest Areas Made

Considered the most accurate planimetric maps of Ontario yet made, first in a projected series of sectional maps, plotted from aerial photographs, covering the province's forested areas, have been printed for distribution.

They are being published by the Army Survey Establishment, Department of National Defence, through a co-operative agreement with Ontario, both having right to distribute them.

The extreme accuracy and detail of the maps were obtained from aerial photographs. Map makers of the Department, with special instruments, plotted the course of rivers, heights of land, contours of lake shores and highways and other essential features just as they appear on the aerial photos.

The extreme accuracy and detail of the maps were obtained from aerial photographs. Map makers of the Department, with special instruments, plotted the course of rivers, heights of land, contours of lake shores and highways and other essential features just as they appear on the aerial photos.

growth. In the parable of the leaven with which Jesus immediately followed this (Matt. 13:31-34), we see that this great outward growth was followed by great inward corruption. Both parables were prophetic.

The use of parables by our Lord was in harmony with the figurative manner of speech in His country. A figurative form of expression often conveys broad meaning. The parables of Jesus have caused great discussions. They yield rich stores of truth to those who will earnestly apply themselves to understanding them.

ACTONIANS REQUESTED TO HELP "FIGHT POLIO" IN PRESENT MARCH OF DIMES

The Red Maple Leaf, a symbol of the "Fight Polio" campaign of the Canadian March of Dimes is appearing on store counters and in public places all over Acton.

Adopted by the Canadian Foundation for Poliomyelitis as a typical Canadian emblem for a Canada-wide organization, the Maple Leaf is found on coin collectors, posters, bulletins, and donation envelopes.

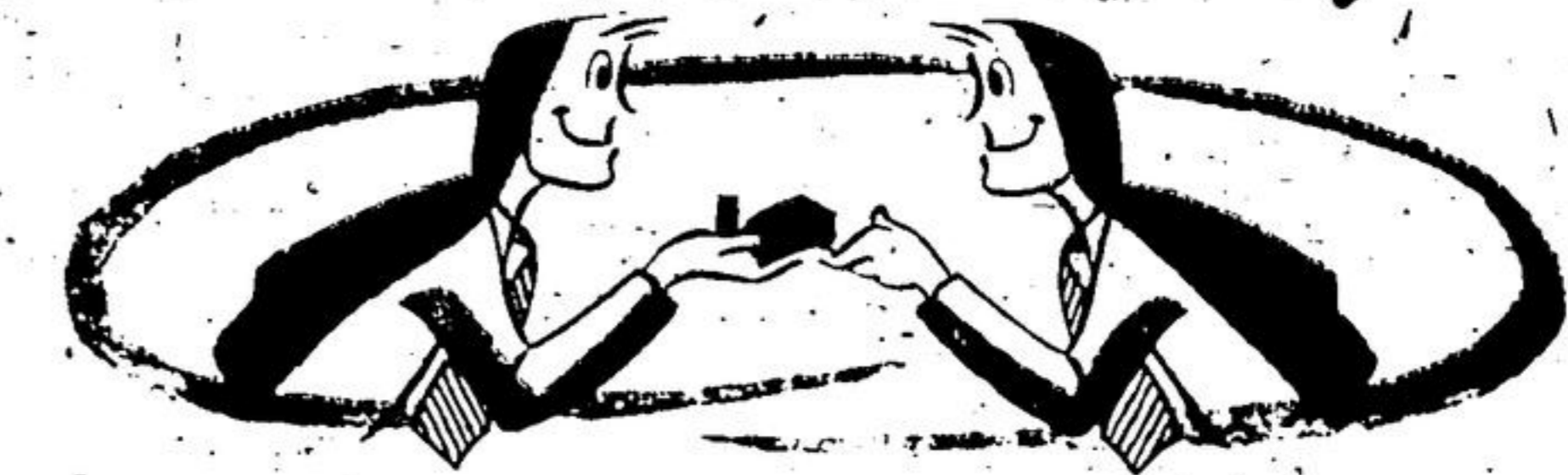
The Red Maple Leaf is appearing simultaneously in other communities throughout the Dominion, reminding Canadians everywhere of the intensive battle now being waged to help rid this country of the dread cripple—Poliomyelitis.

Good business doesn't make a successful salesman, but a successful salesman, makes good business.

BILTON & PERRY LIMITED PLUMBING - HEATING - AIR CONDITIONING AND SHEET METAL CONTRACTORS Acton Ontario Russ Perry, 269W PHONES Ed Bilton, 341W

And you too can enjoy a restful break from wintry winds and snow. The bus trip is an added treat, with sightseeing all the way. FARES ARE LOW (Round Trip - Subject to Change) Jacksonville \$50.00 Miami 61.55 Los Angeles 89.50 HAROLD WILES PHONE 58

Now pay Yourself, too, on pay-day...with Personal Planning



Most people leave themselves out in the cold on pay-day. They pay the grocer and the baker... the milkman and the landlord. Everybody and his uncle dig into their pay envelopes but themselves.

Personal Planning is much more than just drawing up a budget. Budgets are often frustrating dog-collars. They usually tie you down and make life a very monotonous affair.

BANK OF MONTREAL Canada's First Bank Acton Branch, GORDON ODER, Manager WORKING WITH CANADIANS IN EVERY WALK OF LIFE SINCE 1817

HERE'S THE WAY TO



Housewives and homeowners are constantly faced with the problem of increases in prices. To make use of the opportunities presented by merchants in price reductions shop through the advertisements in your hometown paper.

ADVERTISEMENTS SUPPLY THE SHOPPER WITH A SURVEY OF BARGAIN BUYS

Shop through the advertisements in the

Acton Free Press

PHONE 220

MAIN ST.