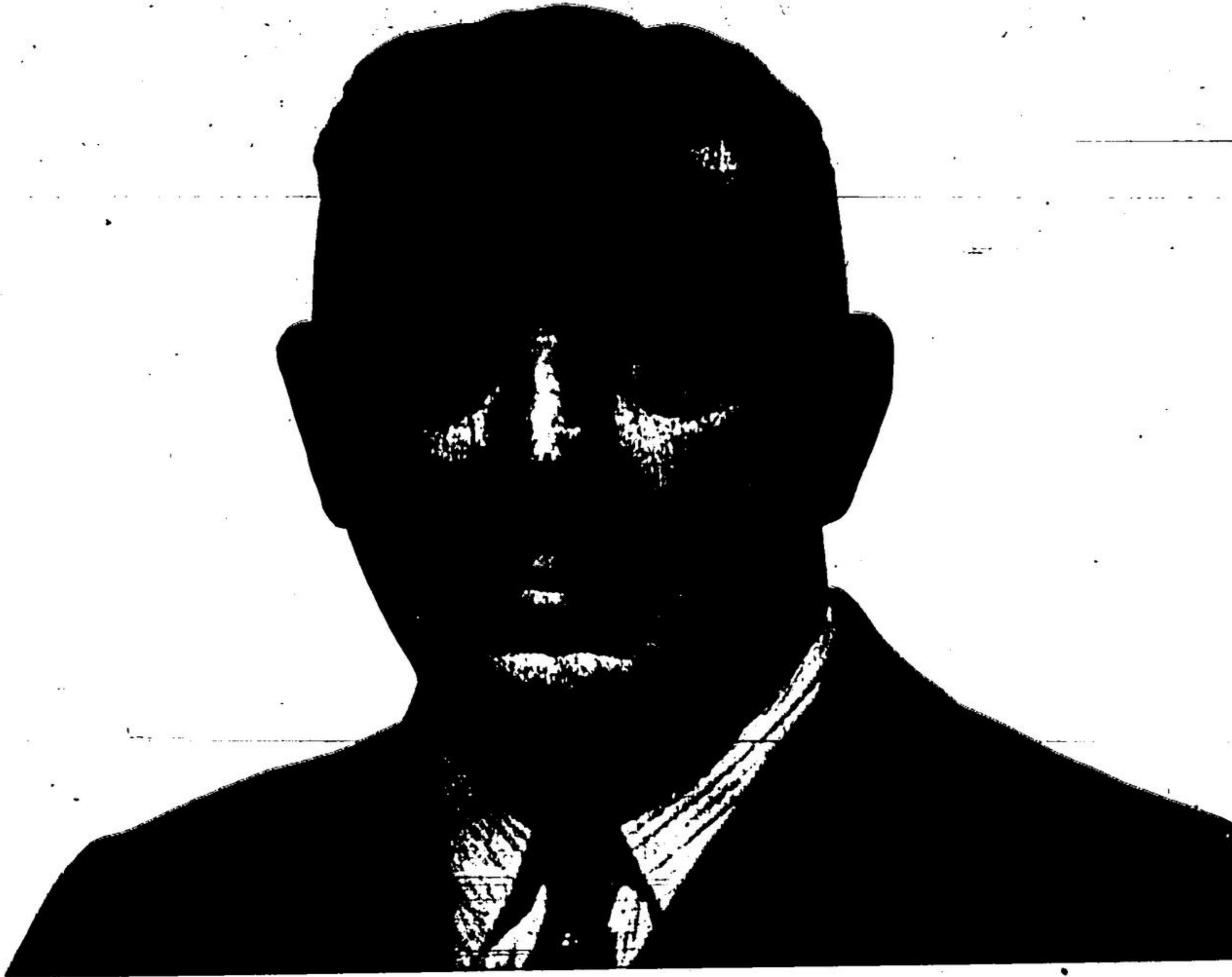


# ALLAN S. NICHOLSON

*Lumberman*



**You must be Tired of all the Contradictory Statements to which You have been Subjected  
in recent weeks**

To me the situation is clear, and I sincerely believe that:

1. The Liberal Party has deteriorated--- it has lost its best men. The manpower policy is a disgrace to good government. The Management of controls has been unfair to many people. The war effort in respect to production has been too extravagant--big business has had a "field day."

2. The C. C. F. is un-British. Socialism is foreign to Canadians. It is dangerous. And, if it attains power it will lead us into trouble. We cannot afford the experiment.

3. The Progressive-Conservative Party is well and ably led. It is a vigorous party--well supported with young and capable men--with a definite, clear-cut policy that will make a sound and prosperous Canada, and give a fair deal for all. It is worthy of your wholehearted support.

If elected I shall support John Bracken and his "Charter for a Better Canada" and will serve all the people of Halton County irrespective of Party, to the best of my ability.

**As a candidate new to politics but experienced in business  
and management I ask your support and vote on June 11**

**WIN WITH BRACKEN**