

Of Interest to Women

Menu Hints

Recipes for New and Novel Dishes, Household Ideas and Suggestions

A FAMILY CHRISTMAS PRESENT

By Betty Barclay

Mother's Christmas gift to the family is a real turkey dinner—plum pudding and all. Here are some suggestions for mothers everywhere who are seeking holiday recipes that are "different."

LIMA PUREE

2 cups cooked, dried Limas
1/2 cup hot water
1 tablespoon grated onion or onion juice
1 tablespoon butter
2 tablespoons flour
1/2 teaspoon pepper
1/2 teaspoon salt
Rub Limas through a coarse strainer; add hot water, salt, pepper and onion. Heat to boiling point. Add butter, add flour, stir until smooth, then add to hot soup, and cook 5 minutes longer, stirring constantly.

SPAGHETTI WITH ROAST GRAVY

Surplus roast gravy (meat or fowl) make a delicious sauce for an inexpensive, but very nutritious and tasty dish of spaghetti, prepared the simplest way.

ORANGE CANDIED SWEET POTATOES

1 cup orange juice
1/2 teaspoon grated orange rind
1 cup water
1/2 cup sugar
3 tablespoons light corn syrup
1/2 teaspoon salt
1 cup butter
6 to 8 sweet potatoes or yams
Combine first 7 ingredients and pour over peeled uncooked sweet potatoes, arranged in casserole or baking dish. Bake covered in a moderate oven (375-400 degrees F.) until tender, 30 to 40 minutes. Baste occasionally. Remove lid last 10 minutes to brown or put under broiler.

PEANUT BUTTER ICE CREAM

(Automatic Refrigerator Method)
1/2 cup sweetened condensed milk
1/2 cup water
1/2 cup whipping cream
1/2 cup crushed peanut brittle
Blend sweetened condensed milk, water and vanilla thoroughly. Chill. Whip cream to stiff peaks. Add crushed peanut brittle and vanilla. Place in freezing unit. After mixture is about half frozen, remove from refrigerator. Scrape mixture from sides and bottom of pan. Beat until smooth but not until melted. Add crushed peanut brittle. Smooth out and replace in freezing unit until frozen for serving.

CHILDREN'S DELIGHT

1 package vanilla wafers
1 pint milk
4 or 5 canned apricot halves
Make wafers-custard according to directions on package. When ready to serve, top each wafer-custard with a canned apricot half, rounded side up.

A CHRISTMAS GAME

In this game each child is given the name of some part of Santa Claus' outfit, the sleigh, the reindeer, bag of toys, etc. Then all the children except one sit in a circle. Then the one who is left reads the poem "The Night Before Christmas." As the poem is read and the names are mentioned, the players having these names, rise, turn around and sit down again. When Santa Claus is mentioned, all change places and the reader tries to secure a seat in the circle. The player left out continues reading and so on until the whole poem has been read.

Hints on Fashions

Faille and Velvet Combined For Day Wear



Nice Fabric Alliance

Faille and velvet is a very nice fabric alliance that has been used quite a bit for evening, but not for day wear. This oversight is remedied in this handsome afternoon frock, which uses faille for the top and velvet for the skirt. The tight-fitting bodice ends at the hipline, and the velvet skirt is full. It has a velvet bow at neck and velvet wristbands. There is a zipper in back from neck to end of faille. It is a useful frock for general afternoon occasions.

DO YOU KNOW THE EVERGREENS?

To most Canadians all evergreens are "pine" or "fir" trees, states R. W. Oliver, Division of Horticulture, Central Experimental Farm, Ottawa, Ontario. The climate of Canada does not allow acquaintance with the broad-leaved evergreens of the United States or the British Isles. Knowledge of the large group of native conifers and their garden varieties is so limited that "pine" or "fir" is much the simplest way of conveying the idea that a tree keeps its leaves all winter.

The native conifers and their horticultural varieties deserve a very prominent place in gardens. Because of their dense evergreen foliage they can be used in mass plantings along the boundaries to act as windbreaks and give definite outlines during winter. Because of their delicate shapes they may be used as specimens or accent points to bring out the architectural design of the garden throughout the whole year.

The taller native conifers, the various pines and spruces, the balsam, and the hemlock can be used to advantage only on fairly large properties. Their place is confined to windbreaks, backgrounds for the more brightly colored garden subjects or as specimens on large lawns. Here they can be used to provide a suitable year round frame to a view of the house or from the house, a view of some distant scene. They should never be used as subjects for planting around the foundation of a house as is often seen. Their nature is to grow into tall trees and though they will stand proper trimming, this gives too much of an appearance of artificiality.

There are, however, many horticultural varieties of cedars, juniper, and yew, which have a very definite usefulness in small, as well as large, gardens. They make excellent subjects for foundation planting around houses of good architectural design where it is desired to bring out the lines of the house. They are not however as suitable as deciduous shrubs for softening the lines of the older type of house with high foundations and broad porches. Because they will stand proper trimming, cedar, spruce and even white and red pine all make excellent hedges. The Japanese yew also makes a fine low hedge.

Another place where the smaller evergreens are extremely useful is in the rock garden. Here they may be planted as a massed background, or used in pockets between the rocks where their upright forms will break up the flat monotony of horizontal strata, and the low spreading ones will look well at the base of high cliffs.

Flowers give bloom for so short a period in Canadian gardens that it is necessary to rely on the quieter effects secured through good groupings of form and foliage. The evergreens supply this need for twelve months in the year, and should form the backbone of design for any gardens which may have hitherto been somewhat bare.

And in the old days, a bad man would go around with niches in his gun handle instead of on his fingers.

"Our" Column

Items of Particular Interest to Women in Which Women Readers of The Free Press May Discover Each Week

A MORNING GLORY FOR EACH DAY OF THE WEEK

Thursday, December 15th
The sympathetic heart is of greater value than the wide open purse.

Friday, December 16th
The world can never have too many inspiring men.

Saturday, December 17th
If we wish to hear God's word we had better keep silent ourselves.

Sunday, December 18th
Glory to God in the highest, and on earth, peace, good will toward men.

Monday, December 19th
The blessings of Christmas comes rather to those who give than to those who receive.

Tuesday, December 20th
The Christmas that has no room for Christ is not a genuine Christmas.

Wednesday, December 21st
Unselfishness goes far to make a Merry Christmas.

NURSE ELKRAM

HOME HINTS
Listed here are a few don'ts that if you remember, you may greatly lessen the accidents around the home:

Don't use gasoline in the house, even for cleaning.

Don't take medicines in the dark.

Don't run your motor car engine unless the garage doors are open.

Don't handle electrical instruments with wet hands, or don't try to handle them while in the bath tub.

Don't take old medicines that have been in the house for a long time and never take medicine from a bottle that you are not absolutely sure about. Keep all bottles well labeled.

Here are a few things that it is wise to do:

Put old razor blades and broken glass in an old bottle before throwing away.

Put sand on icy steps and walks.

Put pins in the necks of poison bottles to warn others, and above all, keep all poisons, in fact all medicines, out of the way of children.

Always treat a gun as if it was loaded. Never go out or to bed before you make sure that your fires are all right, and all the electric is properly turned off.

DID YOU KNOW?

It is estimated that the cost of crime in the United States is over \$13,000,000,000 annually, while the cost of education is about \$2,500,000,000. It might be that if we spent more on the latter we should not have to spend so much on the former.

SCOTTISH ACRES DECREASE

The preliminary statement of the Agricultural Returns taken in Scotland, as at June, 1938, shows that the total area under crops and grass amounts to 4,568,000 acres, comprising 2,985,000 acres of arable land and 1,583,000 acres under permanent grass. The total acreage is the smallest recorded since 1873, and is less by 3,000 acres than that returned in 1937. The area of arable land is less than in 1937 by 7,000 acres and is the smallest area recorded since the returns were first taken in 1866. On the other hand the 1938 area of permanent grass is 4,000 acres greater than in 1937.

Train did everything a real train was supposed to do.

In the meantime, Mother had gone straight back to the third floor, and although she searched the department from one end to the other, and made endless inquiries, no one had seen or heard of a little boy alone. The other two children were getting impatient, allowing the way through the crowd and stopping to look at anything was not what they had come for.

"Mummy, let's go to Toyland first and look for Allan afterwards," Norma suggested with the calmness of childhood. "Maybe if we went to Toyland we might find him," volunteered Bruce.

His mother agreed that might be possible. But in Toyland the worried mother was confronted with another problem. Norma wanted to stay with the dolls. Bruce was all for moving towards the mezzanine counter, and she dare not let either of them out of her sight.

Come, Norma we will go this way first, she said, literally dragging the little girl away from the lowest dolls. Bruce was soon deep in conversation with a mezzanine salesman while his mother looked anxiously in all directions. And there, still entranced with the marvellous performance of the streamlined train, was the lost boy.

"Allan! Allan!" she called.

And Allan, though back to a world of reality, rushed to meet her.

"See, Mum, I'm glad you're back—where did you go to?"

"My dear child, it was you who went! Don't ever get-off-an-elevator again unless you are sure Mother is behind you. What would you have done if I hadn't found you?"

"Well, a little doubtfully, I guess I could have got in a street car and gone to Aunt Mary's, if I'd had a dime. But I didn't have even a nickel," he added somewhat tearfully.

Then, with a sudden change of mood, "Say, Mum, come and look at this train. See how she works... isn't it swell?"



MEATS

BUY EARLY AND GET THE CHOICEST MEATS

We have Stocked our Refrigerators with the Very Choicest Meats the market affords. Christmas comes but Once a Year, and here's Our Offerings for a Feast that will make the occasion memorable.

Pre-Christmas Special

Armour's Pure LARD 1 Oc per lb.

PORK CUTS Are all from the Choicest Hogs on the market.	BEEF CUTS Off Prime Beef specially selected for the Christmas trade.	CURED MEATS From all the well-known packers of standard meat products.
---	--	--

- FOWL -

Turkeys - Geese and Chickens - Your Choice to Suit the size of the family gathering. Make Your Selection. We Assure You of the Quality.

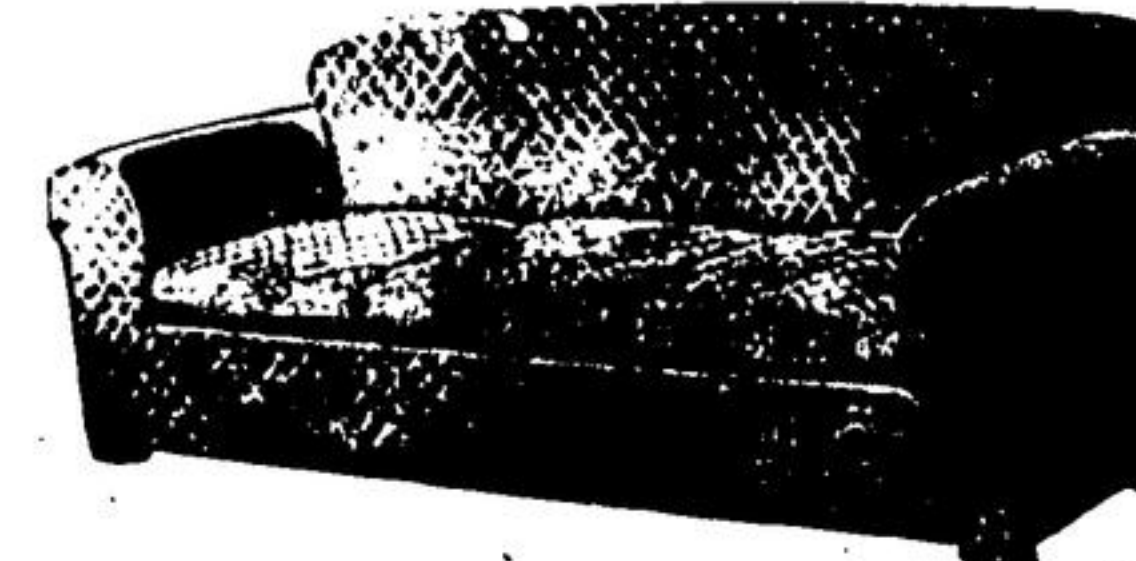
LOVELL BROS.



All the useful things you can present your family, there is nothing more enjoyable than Furniture. Make your house a home that you and your family will be really proud of... one where your sons and daughters will love to entertain. Look at these attractive, low-priced offerings.

CHESTERFIELD SUITES

There is nothing makes the home more homey than a Chesterfield Suite. Come in and see the new, modern designs and coverings from \$69.50 up.



More Gift Suggestions

STUDIO COUCHES - A very beautiful and yet useful gift in any home. In all the new designs and covers, at prices to suit all.

CUSHIONS - New Designs, New Coverings and yet Very Reasonable in Price. \$1.98

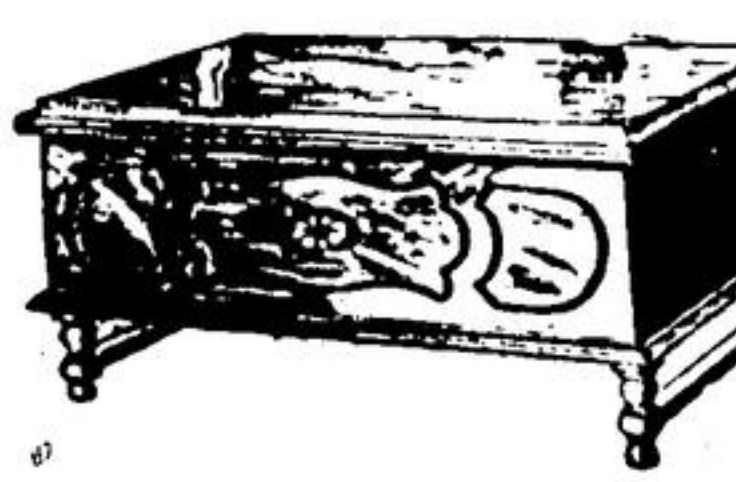
LAMPS - As usual, we have a very large stock to choose from All New Designs. From \$2.25 to \$18.50.

CEDAR CHESTS - A lovely range to choose from. Really beautiful and yet inexpensive.

MARSHALL MATTRESSES - Give Mother and Dad a Marshall for Christmas. From \$14.50 to \$52.50.

AND FOR THE KIDDIES - Dump Trucks, Kiddie Cars, Wheelbarrows, Blackboards, Rocking Chairs, Kindergarten Sets, etc. All at Very Low Prices.

Card Tables - End Tables - Magazine Stands - Occasional Chairs - Coffee Tables - Smokers



PICTURES
We have a lovely assortment to choose from. 15c to \$2.75.

WE CARRY A FULL LINE OF CANADA PAINTS AND VARNISHES

JOHNSTONE & RUMLEY

HOME FURNISHING "MILL STREET, ACTON"