



Maureen Plucinsky B.Sc.
Sales Representative

100% CLUB

Town & Country Specialist REALTY EXECUTIVES SUPREME
Tor.: (905) 874-3048
Free evaluation <http://www.aztec-net.com/~maureen>



**Caledon
Terra Cotta
~ 17.34 Ac.**

South of Belfountain. Exquisite private senior executive retreat on the top of the Niagara Escarpment surrounded by hundreds of acres of NEC Conservation Land with easy access to Toronto. Exceptional attention to design, use of light, space, quality of materials & craftsmanship.

Visit my web page for more information and pictures on this and other properties.



Georgetown

**\$359,900
~ 1Ac.**



Unique elegant home on superb acre with stream, pond & in ground pool backing onto mature bush. 4+ Bdrms, 3 WRs, 2 FPs. Glass & screen sunroom. Min. to GO station.

Halton Hills

**\$795,000
~ 47 Ac.**



Equestrian facility min. from G'town and the GO train. 23+ stalls. Arena has 6 box stalls, tack room and lounge. Spring fed pond. Possible uses: golf course, institution, vet. clinic, home occupation, kennel, campground. 150 ac. adjacent available.

Halton Hills

~ 98 -236 Ac.



Beautifully renovated (gourmet kitchen) Century Brick home close to Hwy 401, James Snow Parkway, Leisure Centre & GO Train in Milton. Excellent farm land. Out buildings are in very good shape. Stream, Pond. Some bush. In ground pool.

Milton

**\$359,000
~ 44 Acres**



Hobby Farm. ~ 12 Min. to 401 Hwy. Barn & driveshed. Goat, sheep & beef farm. Treed & clear. 16 mile creek runs through property. Secluded. Low taxes.

Erin

**\$289,000
~ 7.45 Ac.**



Majestic energy efficient Timber-Frame ~ 4,000 sq. ft. Treed, private lot. Drilled well. Soapstone F.P. Hot water oil heating. Awaits your finishing touch.

Erin

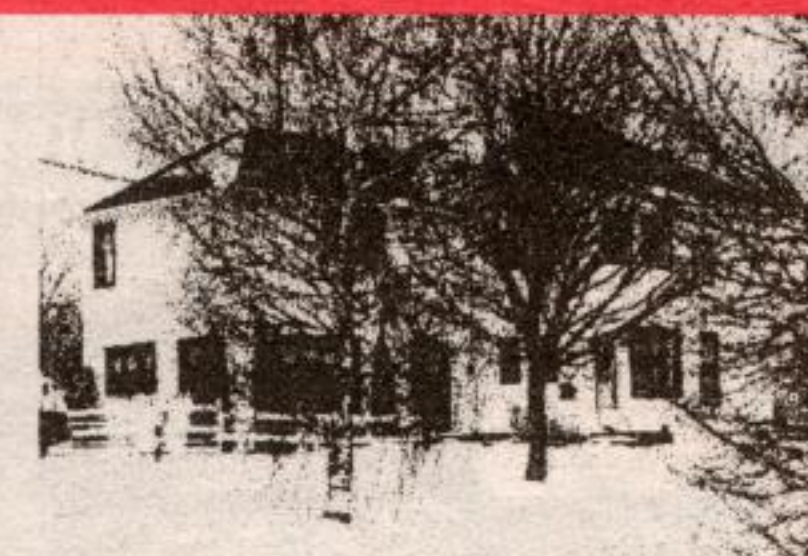
**\$238,000
~ 9.49 Ac.**



Hobby farm with a spacious brick bungalow & small barn. Wood stove in LR & brick fireplace in recreational room. ~1 acre of trees at the rear traversed by the Eramosa River.

Erin

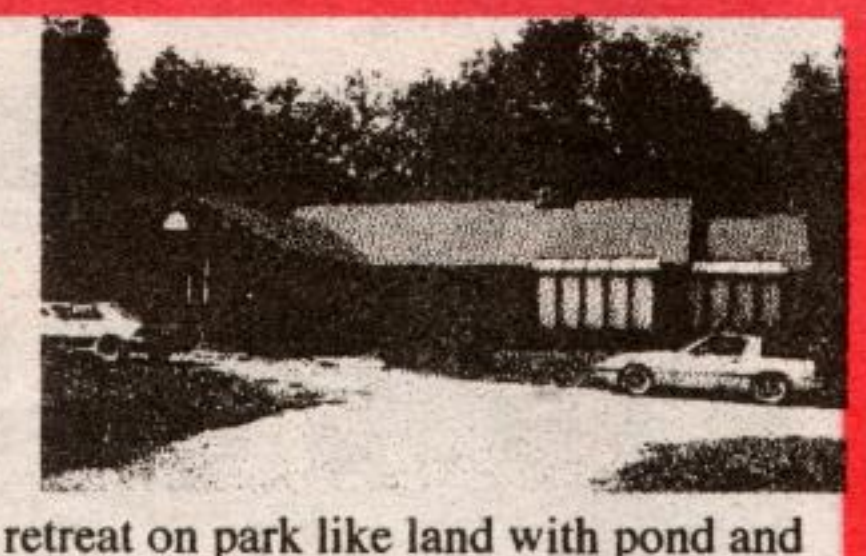
**\$278,000
~ 23 Ac.**



Two Family Hobby Farm. 2 for the price of 1 Semi-detached In-Law apt. FAO/wood. Land suitable for horses. Quiet road. Set back across Eramosa River tributary.

Erin

**\$269,900
~ 2.77ac**



Secluded executive retreat on park like land with pond and trees. Top Quality custom designed 2 bdrm bungalow with total attention to quality, detail, light & space. Enormous gourmet kit with built-ins. 4 walk-outs. 2 ensuites. Cedar cath ceilings. Stone & cedar FP. Ground Source Heat Pump

Georgetown

C2

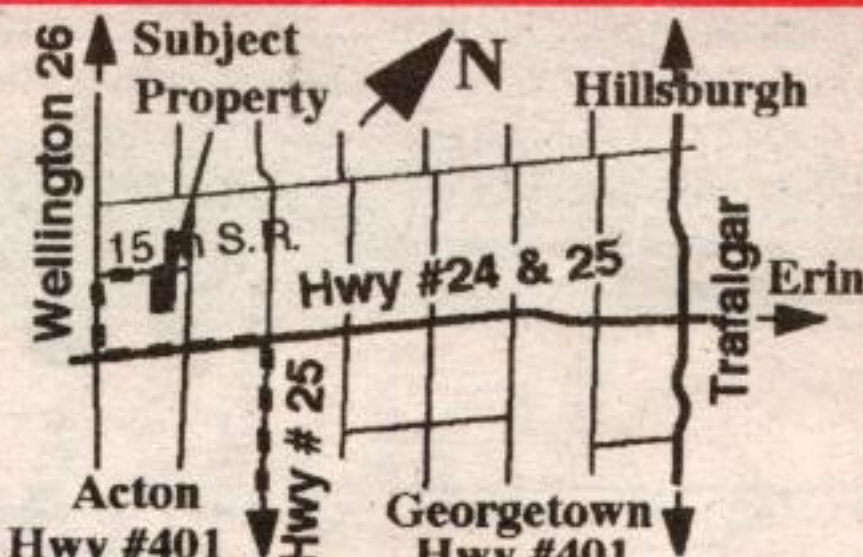
**\$950,000
~ 0.5 Ac.**



Commercial property in the center of Georgetown with 3 frontages, one on Hwy #7. C2, zoned for: retail store, office, service station, bakery shop, animal clinic, public garage, bowling alleys, car sales rooms, etc.

Erin

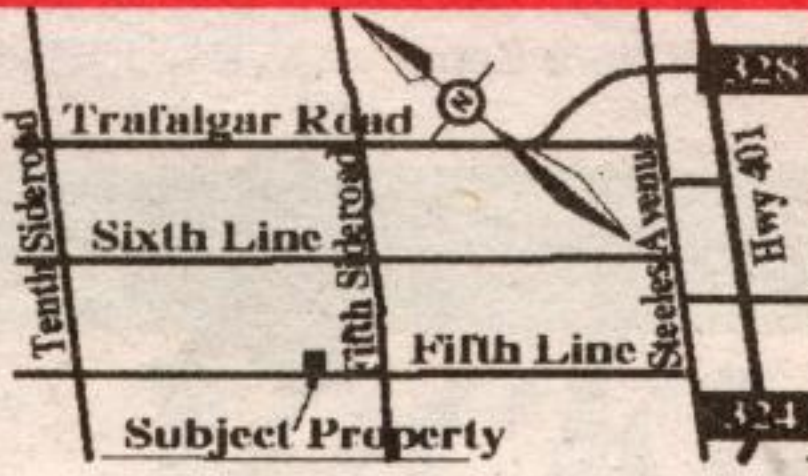
**\$138,000
~ 33 Ac.**



Vacant land zoned agricultural. Provincially designated wet lands. Neither school levy nor lot levies are applicable. ~749 ft. frontage x ~2000 ft. Treed & sloping.

Halton Hills

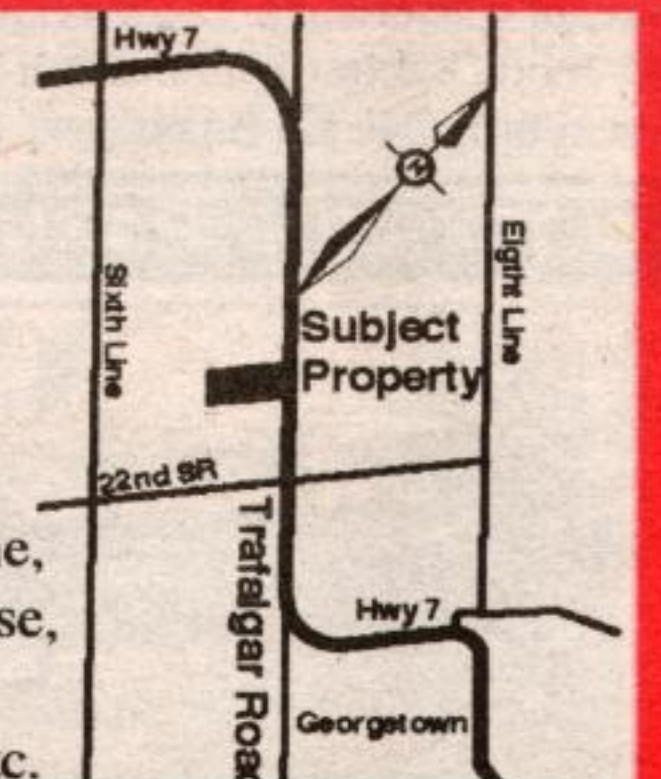
**\$149,900
~ 1.82 Ac.**



BUILDING LOT: High & dry. 5 min. to Hwy # 401 & James Snow Pkwy, GO & Leisure Centre in Milton. Well: 10gal/min. Excellent location.

Halton Hills

**\$159,900
~ 50 acres**



Rare large parcel of land near Georgetown for home, small scale institutional use, animal kennel, veterinary clinic, cottage industry, etc.

VILLAGE TERRACES

Georgetown's Residential Gem

Pre-Construction Sale
ROCK Bottom Prices

Enjoy the serenity and safety of a small town...without sacrificing lifestyle and amenities!

- ◆ 8 gorgeous designs
- ◆ Landscaped grounds with vegetable garden
- ◆ High tech security system
- ◆ Recreation lounge with walk out to patio
- ◆ Oversized balconies
- ◆ Contemporary brick and pre-cast construction
- ◆ Individually controlled heat and air
- ◆ Abundance of windows
- ◆ Ensuite baths
- ◆ Penthouse suites with 9' ceilings, fireplaces and skylites*
- ◆ Underground visitors parking
- ◆ Library/Meeting Room
- ◆ Professional management

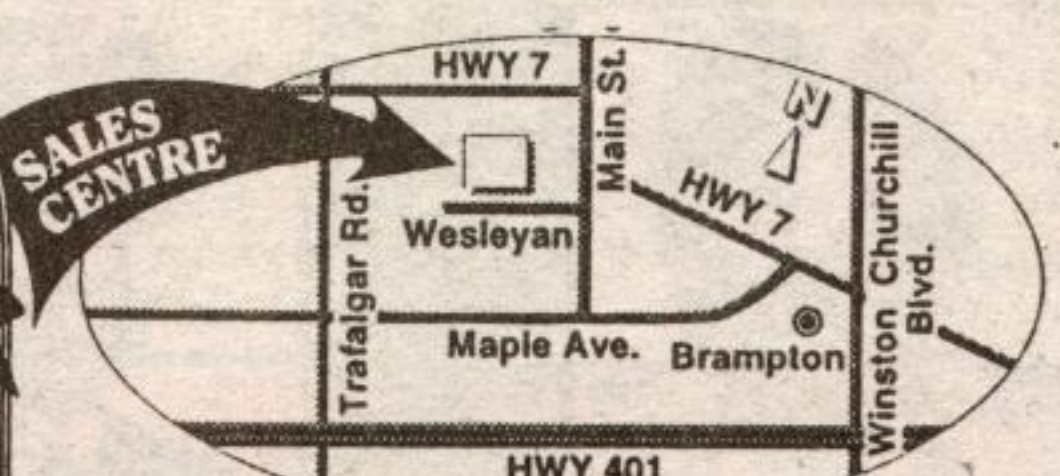
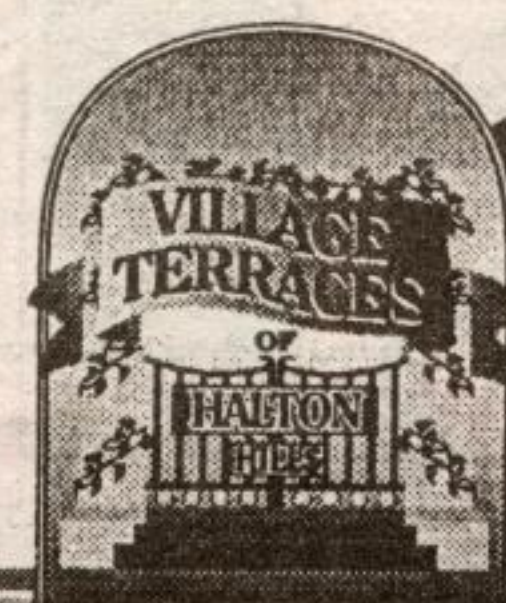
*where applicable

UP TO 1,433 SQUARE FEET
PRICED FROM AN UNBELIEVABLE
GST INCL.

\$99,900

FROM **\$114,900**

CALL **873-1436**



All information is correct at press time. Prices and specifications are subject to change. E.O. & E.