



Maureen Plucinsky B.Sc.
Sales Representative

100% CLUB

Town & Country Specialist

Tor.: (905) 874-3048

Free evaluation <http://www.aztec-net.com/~maureen>



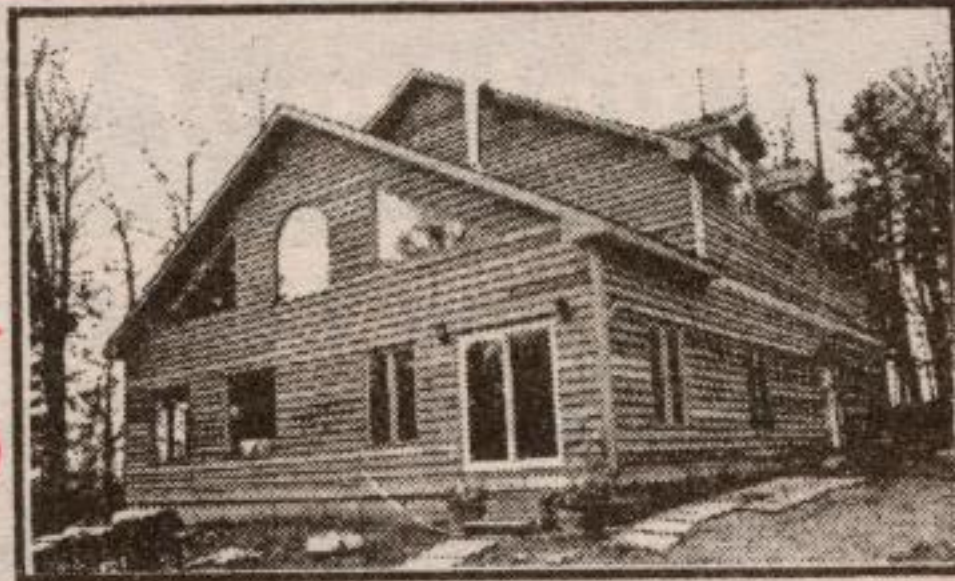
REALEXECUTIVES SUPREME
873-0300

Terra Cotta
~17.34
Acres



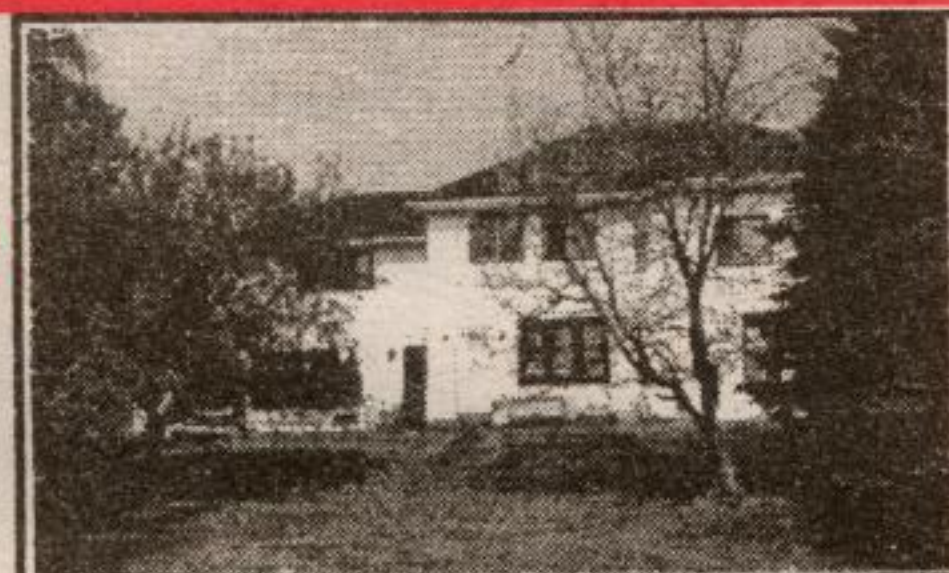
Caledon. Exquisite private senior executive retreat on top of the Niagara Escarpment with easy access to Toronto. Exceptional attention to design and quality of materials.

NEW
~7.45 Ac.
\$289,000



Erin. Majestic energy efficient Timber-Frame ~ 4,000 sq. ft. Treed, private lot. Drilled well. Soapstone F.P. Awaits your finishing touch. Hot water oil heating.

\$278,000
~23
Acres



Erin. Two Family Hobby Farm.
Semi-detached In-Law apt. FAO/wood. Land suitable for horses. Quiet road. Set back across Eramosa River tributary.

\$138,000
~33
Acres



Erin. Vacant land zoned agricultural. Possible pond site. Neither school levy nor lot levies are applicable. ~749 ft. frontage x ~2000 ft. Treed & sloping.

List with me.

I will advertise your property on my **World Wide Web Page**

on the same day.
Look up my page at

<http://www.aztec-net.com/~maureen>

Inventory is Low. Listings are Needed:

In-Town:

Bungalows, Split Levels & 2 Story Homes

Country:

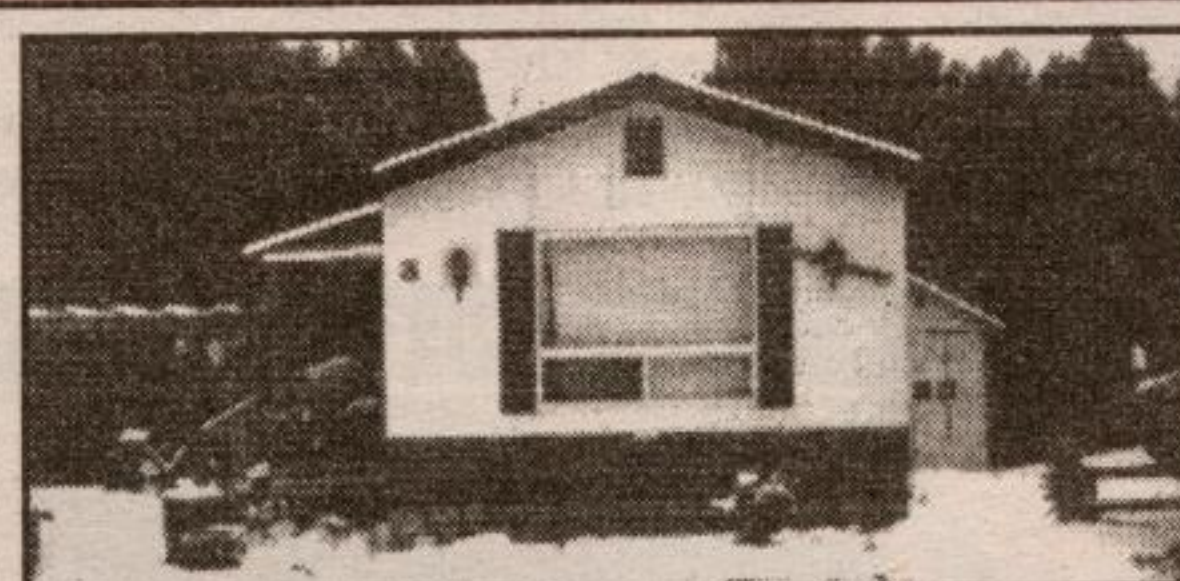
Farms, Secluded Homes, Estate Subdivision, Character Homes such as Log, Timber-Frame, Cape Cod and Century.
There is a great demand for building lots.

Sutton
GROUP

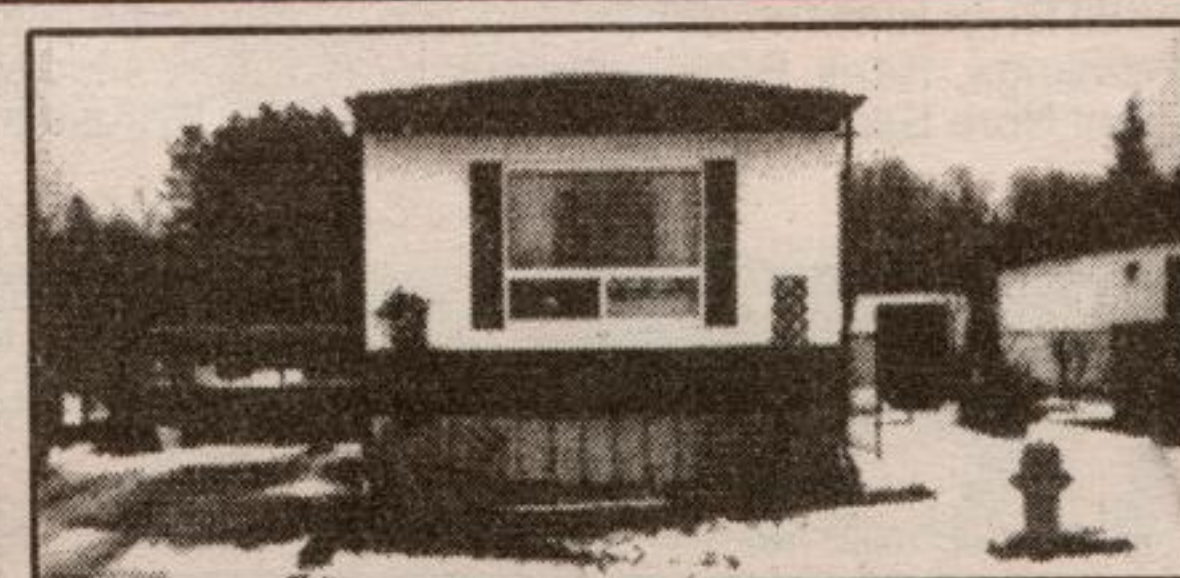
GET OUT FROM UNDER THAT RENT



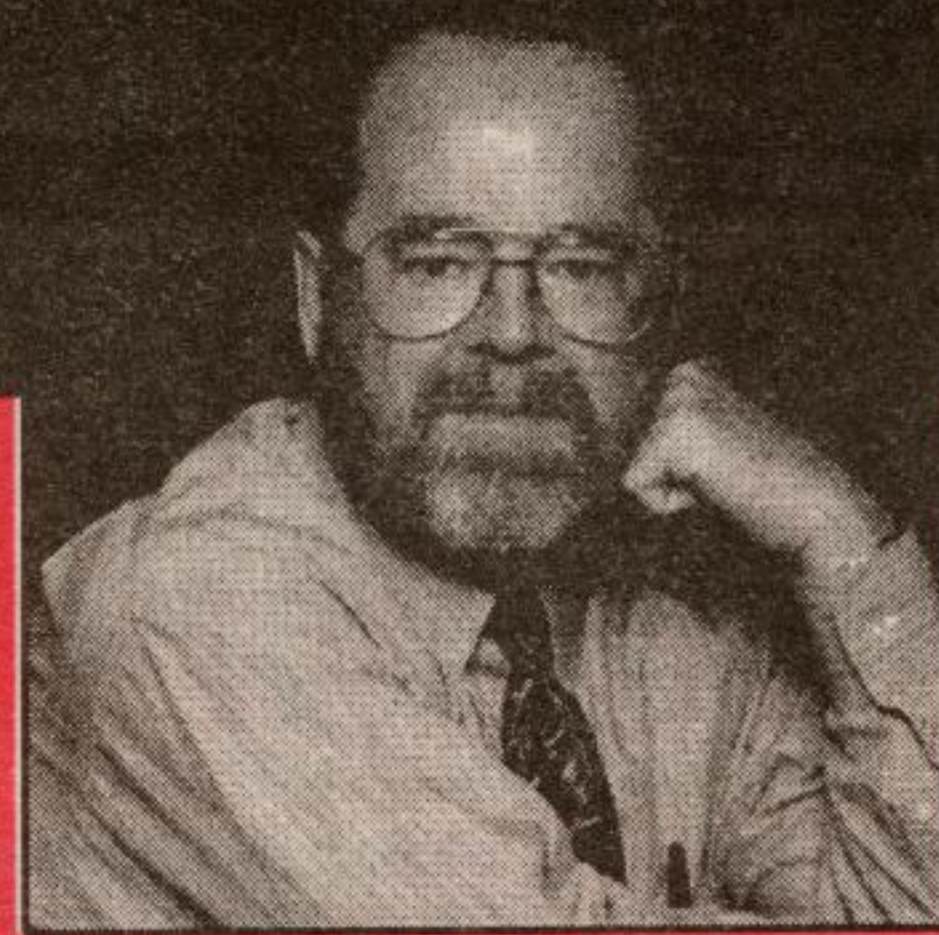
4 BEDROOM mobile home on gorgeous lot backing onto woodland with gently flowing stream, 2 storage sheds, lot fully fenced for children and pets. Asking \$66,500.



3 BEDROOM mobile home, all appliances, 2 storage sheds, large workshop, woodburning stove in large living room, cathedral ceilings, new landscaping this year. Asking \$74,900.



2 BEDROOM mobile home, all appliances, some decorating just completed, large storage shed, large deck for evening barbeque, beautifully landscaped. Asking \$71,000.



Bob Willard
Associate Broker
(519) 833-1014
Toll Free 24-Hour Pager
1-416-550-1408



A MOMENT IN TIME

4 bedroom, 2 storey home with very large living and dining rooms, high baseboards, family room leading onto fieldstone patio, private circular drive on beautiful secluded 4+ acres, possible home business. Asking \$235,000.

LET YOUR IMAGINATION RUN WILD

This is a wonderful time to design and build the home you've always dreamt of on approximately 20 acres of rolling land in Erin Township, close to a paved road, possible pond site and a vendor willing to assist a qualified purchaser with the financing. Asking \$135,000. Please bring an offer.

PURCHASE YOUR HOME THROUGH ME AND RECEIVE 3 MONTHS FREE MORTGAGE PAYMENTS

Some conditions do apply.

PLUG IN

ALTON
HILLS
YDRO

43 Alice St., Acton
Phone: 853-3700
Direct Customer Service: 853-3701



SAVE ENERGY THE EASY WAY. INSTALL WEATHERSTRIPPING AND CAULKING TODAY.

Add a lot of comfort for a little money. Your retailer can show you how. Caulk around window and door frames, and anywhere else air might escape. Weatherstrip at doors and windows or any other joints that open. Keep the heat on the inside, where it belongs. And when you are buying for the home, always insist on energy saving products — common sense saves.

POWER SAVER™

Tips For Home-owners

Q. Our house was once heated with oil and was dry in the winter. Now that we have a high-efficiency gas furnace, we are plagued with excessive moisture that causes condensation on windows and mould along the walls. How can we eliminate this problem?

A. Your older, less efficient oil-fired system sent a lot of combustion gases up the chimney. This created a negative pressure in the house that resulted in forced infiltration of drier outside air.

Newer, more efficient furnaces not only generate less combustion gases and require smaller means of exhaust, but they also get the make-up air they need directly from outside, which does not induce infiltration.

The net result is that interior moisture is no longer diluted with the drier outside air and, over a period of time, too much moisture builds up unless it is ventilated or other strategies are used to bring back some equilibrium.

One such strategy is to add a small duct, no bigger than 4 inches in diameter, from outside to the return air duct of the furnace. This fresh air duct should have a hand-operated damper installed in its length to regulate or shut off the air supply. It should be protected outside by a dryer-type wall jack with the wind flap replaced with small mesh screening to keep out large insects and rodents.

Q. The basement cement floor of our home has a lot of holes in it. Can it be re-cemented? Is this a job I could do myself, or should I bring in a professional?

A. A new concrete floor can be poured over the existing one if it is in such bad shape that it cannot be repaired, but you may encounter difficulties with the added thickness at the furnace, stairway, partitions, plumbing and oil tank, if you have one in the basement.

Have a competent concrete contractor take a look at your situation and advise you.