

RE/MAX 877-5211

RE/MAX 877-5211

RE/MAX 877-5211

RE/MAX BLUE SPRINGS

REALTY (HALTON) CORP.
360 Guelph Street, Georgetown

(905) Tor. 874-3051 **877-5211** (905) Erin 833-7117 (519)



Working From Sign Up 'Til Sign Down

\$153,900 NEW

GREAT FAMILY HOME

Only \$153,900 Now is the time to take that big step- Call now to see this lovely 4 bedroom with double garage, fire-place in main floor family room Close to public school

Norinne Kilgour 877-5211 or (519) 833-7117 RM378-96

\$268,900



CAPE COD BEAUTY

Beautiful 3 bedroom Cape Cod style home in charming new estate subdivision in Hillsburgh. Attention to detail and good quality throughout makes this home and surrounding community a great place to live. Call Janet McKeown* RM011-97

\$134,900



WHY PAY RENT

Start the new year in your new home. Recently renovated & tastefully decorated. Eat-in kitchen, main floor family room, deck, Patio, Green belt. You may own this beautiful home for less than your monthly rent. Call me and I'll show you how you will be pleasantly surprised Call LORRAINE HURLEY.* RM314-96

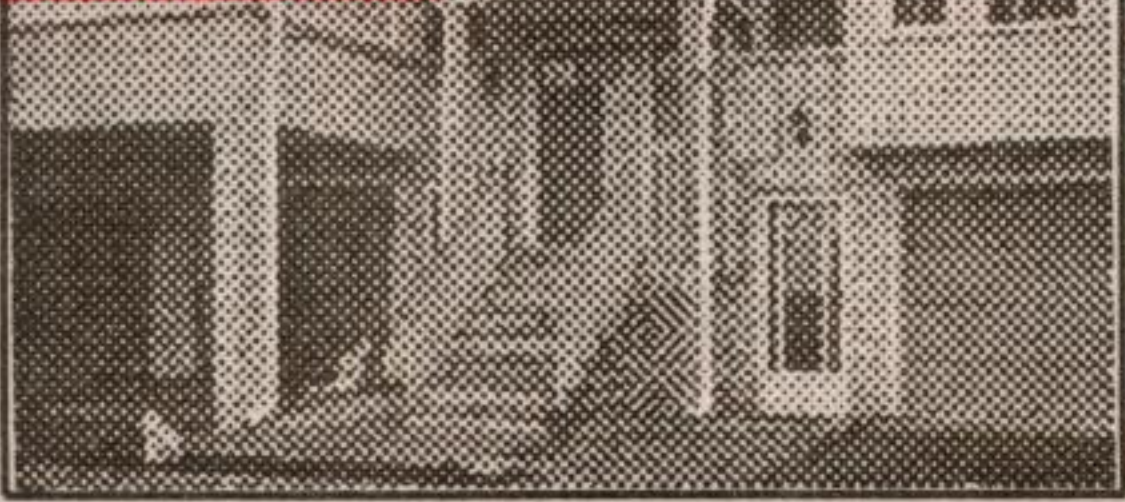
\$164,900



BIGGER THAN IT LOOKS

Three bedroom bungalow with a finished 2 bdrm basement apartment potential. Located on a quiet street. All appliances on the premises are included. Listed at only 164,900. Why not make your move now by calling RUD WHITING 877-5211, Tor Line (905) 874-3051 RM 376-96

\$6100 down



THE PERFECT FIRST INVESTMENT

3 bedrooms, 3 appliances, 3 bathrooms. You'll love the upgraded kitchen cupboards and the private deck off the large master bedroom. Lots of room & privacy. Why not take advantage of today's low, low interest rates and invest in your own future? Call me today for details. CAROL WOOD* RM355-96

\$219,900



LOVELY

3 bdrm, double car garage, "Harrowsmith" model in Georgetown south. Upgraded with ceramic tile in front entrance, kitchen & bath, f/p, French doors, m/f laundry with pantry. W/O from kit to back yard and play area. Call BILL McKEOWN** RM383-96

\$419,900



EXECUTIVE LUXURY

5 bdrm home. Finished on all levels. Fabulous yard on one of a kind lot and great landscaping. Unbelievable patio (covered), built-in appliances, FP insert, W/O, formal entry, stone wall, large porch, very well maintained, great neighbourhood. Shows 10+. Large interlock stone patio. A must to see. Call DAVID BARRAGER*. RM201-96

\$144,900



HEAVENLY LOCATION

Great starter home in the Village of Erin. Large country kitchen with pine cabinets and w/o to huge backyard and deck. Nice living room, very bright. The laundry room has a shower and toilet. Call YVAN DESJARDINS* RM384-96

\$269,900



FABULOUS FAMILY HOME

Large family home on Winston. Large living room & family room boasting woodstove & patio w/o to great backyard & a/g pool & pressure treated deck. Car buff's dream. Sun rm with door to pool & deck. Large country kitchen w/breakfast area. Call DONNA RAE* RM390-96

\$127,000



LOVELY 2 ACRE PROPERTY

Country Property - just the one you have been searching for all these months - 3 bedrooms, living room with woodstove. Walk-out to large deck from family room or play room. Listed at \$174,900. Call now to inspect. NORINNE KILGOUR*, 877-5211 or 519-855-4214. RM299-96

\$127,000



YES, IT'S SMALL ...

—only two bedrooms. Yes, it's on a busy street. But... it is clean!!! It has a finished basement ... and ... it has a large, fenced back yard with a park behind ... and ... it's waiting for you! Call DON PARKER* ASAP. RM072-96

\$164,000



IMMACULATE BUNGALOW

Hardwood floors throughout, eat-in kit. Fireplace in liv rm, extra space off bedrooms could be used as computer area. Walk-out from kitchen to deck, minutes from downtown and two large parks, minutes from Trafalgar Rd. Call DONNA RAE*. RM295-96

Complimentary Market Evaluation

For a free Market Evaluation call
RE/MAX BLUE SPRINGS
877-5211

Above the Crowd!



NORINNE KILGOUR*
Sales Rep. 855-4214



DAVE KRAUSE*
Sales Rep. 877-5211



DOUG MEAL*
Sales Rep. 877-5211



BILL McKEOWN**
Assoc. Broker 873-2437,873-4943



KATHY MONCKTON*
Sales Rep. 877-6420



CATHY OSBORNE*
Sales Rep. 877-5211



DON PARKER*
Sales Rep. 833-9151



CATHY POLLARD**
Assoc. Broker (519) 855-6524



DONNA RAE*
Sales Rep. 873-1058



CAROL WALRAVEN*
Sales Rep. 877-5211



RUD WHITING*
Sales Rep. 877-5211



CAROL WOOD*
Sales Rep. 877-5211



RE/MAX 877-5211

RE/MAX 877-5211

RE/MAX 877-5211

RE/MAX 877-5211

RE/MAX 877-5211

RE/MAX 877-5211

RE/MAX 877-5211

RE/MAX 877-5211

RE/MAX 877-5211

RE/MAX 877-5211

RE/MAX 877-5211

RE/MAX 877-5211

RE/MAX 877-5211