

FOR SALE

JOHNSON ASSOCIATES HALTON LTD., REALTOR

Performance Counts

WE'RE #1 IN OUR

"PERFORMANCE"

JOHNSON ASSOCIATES HALTON LTD., REALTOR

247 Guelph St., Georgetown, Ont. L7G 4A8

877-5165

Erin / Hillsburgh
(519) 833-9714

Toronto /
(905)



EXCEPTIONAL VALUE

This spacious 4 or 5 bedroom sidesplit sits on a gorgeous 1/2 acre lot backing onto the golf course. At only \$181,900, it won't last long. Ask Renee for all the info.

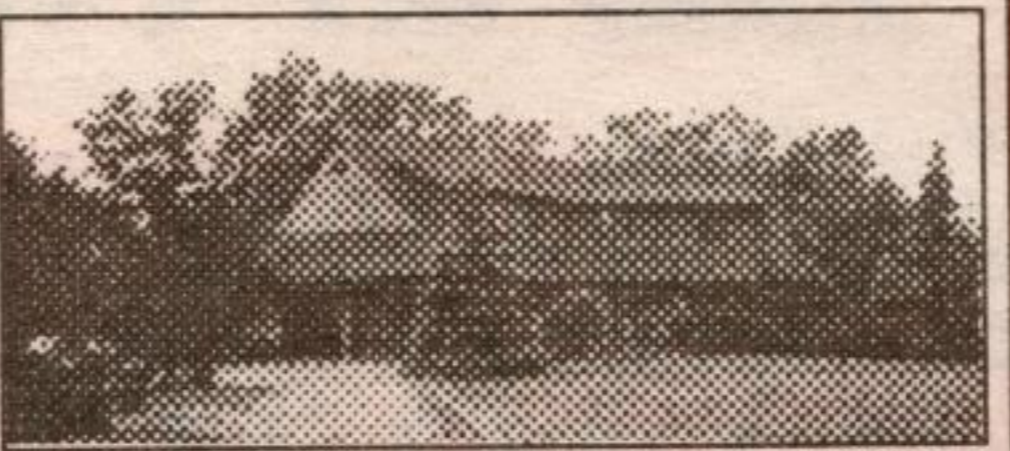
Renee Good* 96-416-91



EXCELLENT LOCATION

For golf & commuting. 4 bedroom executive home on half acre. Main floor family room, fireplace, large kitchen. \$265,000.

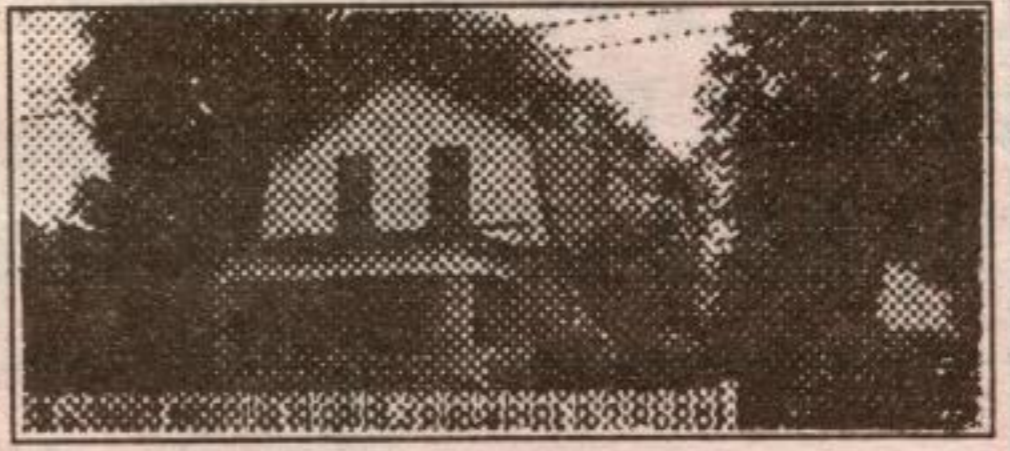
Call Rod* or Dinah* Presswood 96-362-30



FALL GLORIOUS FALL!

See it in all its splendour on one of the prettiest lots around. 5 bedrooms, plank floors, country kitchen, cozy stone fireplace and all on exclusive Old Pinecrest Road in Norval.

Elizabeth Doell* 96-465-31



ELEGANT & CHARMING

Glen Williams delight that's filled with character and beauty. Extra special home for the buyer who wants impressive living on a well-landscaped private lot. 4 bedrooms, sauna, sunroom & big family room - all for \$279,900!

Glenda Hughes* or John Hill* 96-337-30



GREAT PARK "RENO"!

Very charming Park District home with addition and extras galore. Spa, beautiful kitchen with eat-in area, master bedroom with semi-ensuite and walkout to a private balcony. Main floor family rm with fireplace and walkout. Wonderful home for \$244,900.

John Hill* 96-414-30

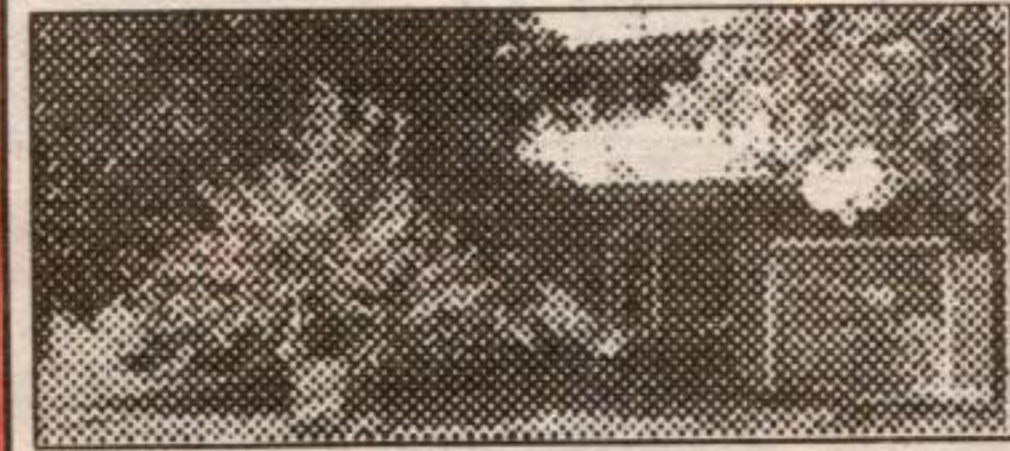


NEW PRICE

COUNTRY CHARM & ATMOSPHERE

Minutes to Acton, Georgetown & Erin. Pretty home, skylights, new kitchen, upgraded bathroom, pond & bush. \$219,900.

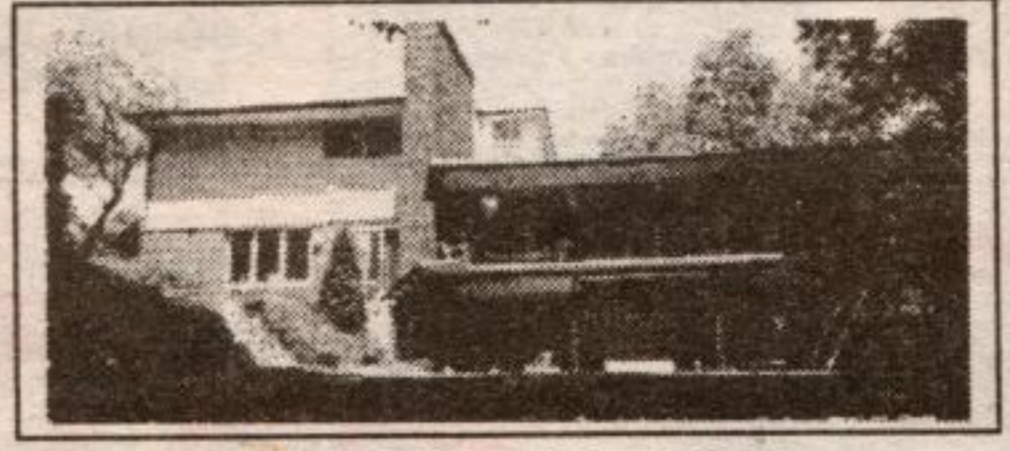
Kathy Ellis* 96-336-31



GREAT FAMILY HOME

Ideal location close to all amenities. Four spacious bedrooms, eat-in kitchen, rec room with woodburning fireplace. All for \$179,900. Don't hesitate to call.

Rod* or Dinah* Presswood 96-387-30



I'VE GOT CLASS!

\$314,900. One of Georgetown's finest, exceptional 1/3 acre ravine lot with fenced yard, landscaped & mature forest. This quality home has w/o's on 3 levels, covered balcony deck, gas FP + log burning FP's, fam. kit., entertainers liv. & din. rms. Lots of upgrades - don't wait! Larry Barnstaple*

Larry Barnstaple* 96-329-30



SUPPLY AND DEMAND

This 3 bedroom brick bungalow won't last. Fenced back yard, a 14 x 30 ft. rec room, hardwood floors, all for \$169,900. Call Rick Curry* for viewing.

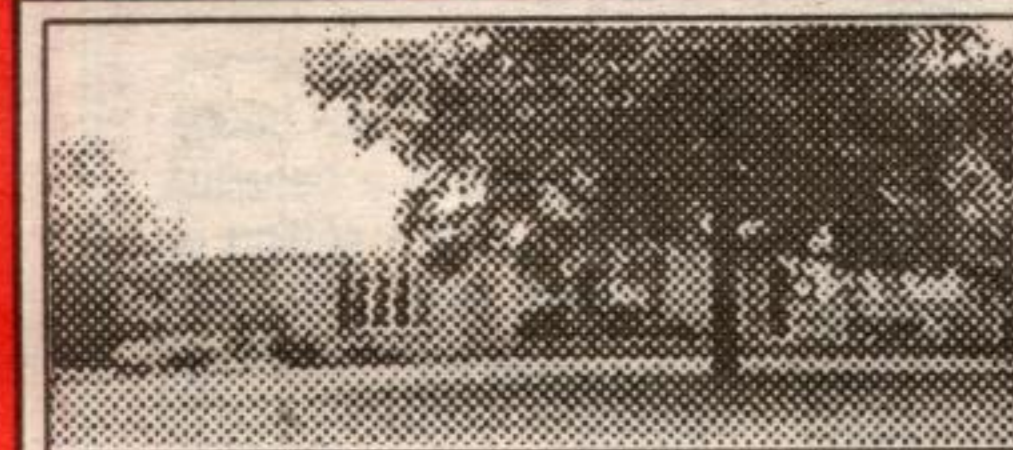
Rick Curry* 96-412-30



EVERYONE'S WISH

\$287,500. 5 Beautiful acres with bush & expansive landscaped lawns, stream, 3 car garage. Approx. 2350 sq. ft. bungalow, sunken living room with woodstove & walkouts - 6 bedrooms, rec room, spacious country kitchen.

Larry Barnstaple* 96-395-91



LARGE SHOP, GAZEBO & HOT TUB

Upgraded kit. w/ centre island, whirlpool in mn. bath, 2 sep. basements, satellite dish, garden tractor, appliances, approx. 20 mins. to 401 at Hwy 25. Great neighbourhood.

Larry Barnstaple* 96-366-91



THIS IS NOT A DRIVE-BY!

Pretty, private lot (4.9 acres) with lovely bungalow. Large principal rooms, oak plank floors, oak panelled wall & zero clearance slate fireplace, upgraded oak country kitchen—the list is endless. Location ideal & the price amazing: \$243,000.

Kathy Ellis* 96-421-90



RUSTIC AND BEAUTIFUL

18 private acres with long views, pond, paddocks, bush with trail and rolling meadow. Exceptional "one of a kind" stone and log home. Gleaming wide plank floors, bright spacious rooms, cathedral ceilings, central stone fireplace on two floors.

Larry* or Martha* 96-375-91

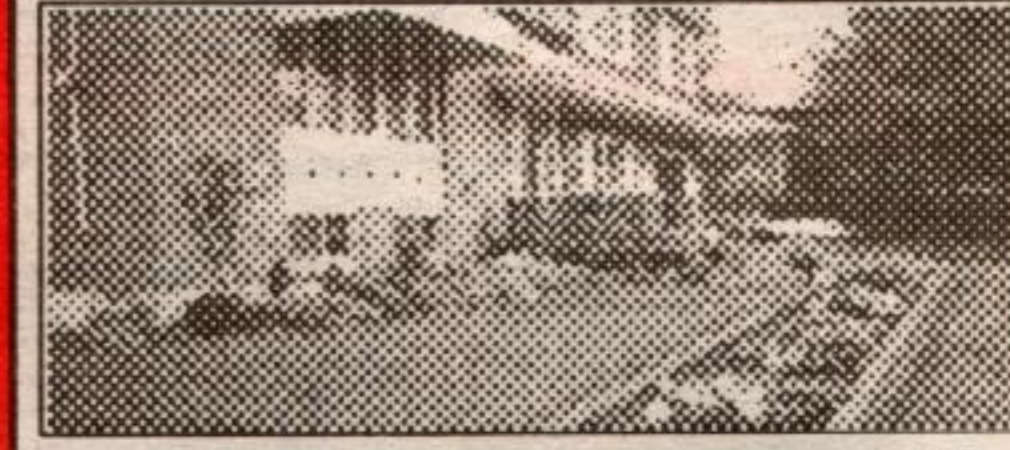


\$359,000

HALTON 2 FOR 1 - PLUS 100

100 acres, minutes to Hwys 401 & 25, original upgraded Victorian charmer with verandah, plus modern 3 bedroom home with 3 car garage.

Larry Barnstaple* 96-249-31



MOORE PARK - GARDENS

Beautifully landscaped 3 bdrm sidesplit minutes from shopping, schools, hospital & GO Train. Don't miss this opportunity to live in desirable Moore Park.

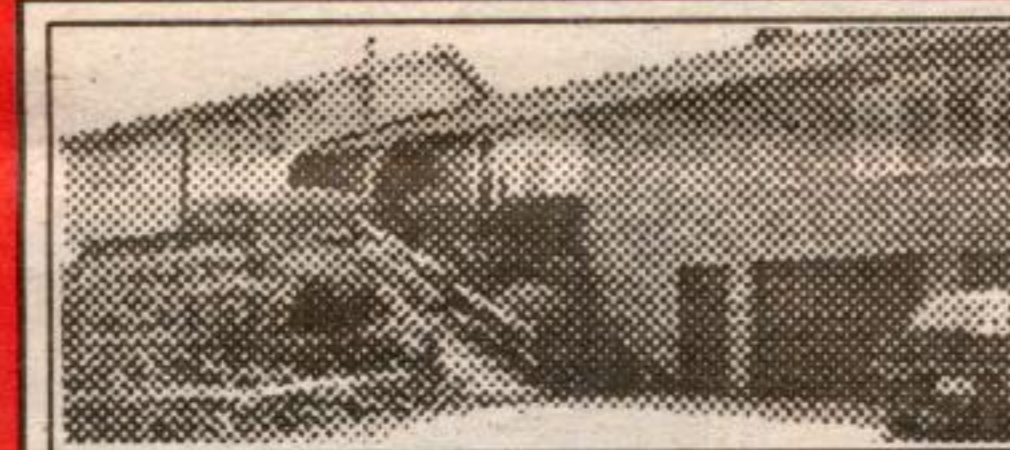
Stewart Barclay* 96-404-30



LOVELY COUNTRY HOME \$194,900

Pretty lot with unistone walkways and rear patio, huge deck, 3 freshly decorated bedrooms, family room and so much more.

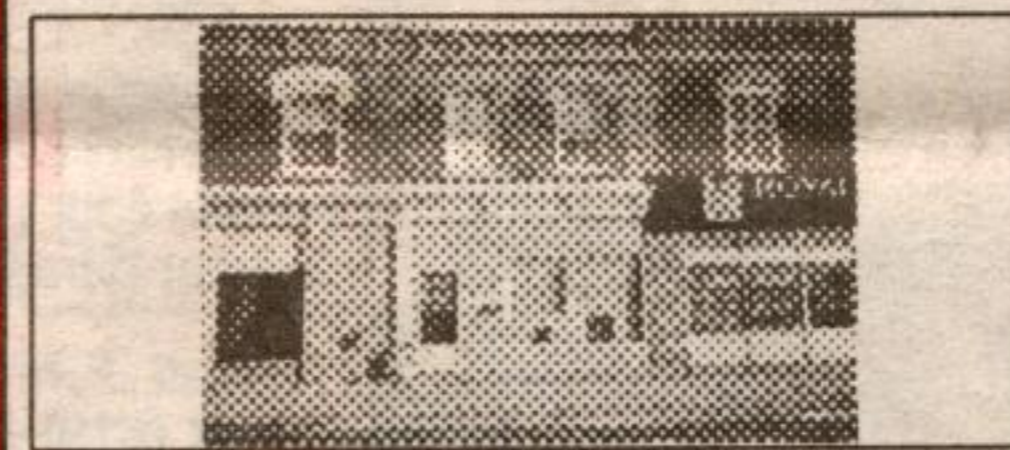
Kathy Ellis* 96-331-91



TEMPTING TEN

10 acres of country in prime location. Good access to 401 highway or Georgetown GO Train. Overlooks pond and bush. Loads of upgrades, walk-out levels. Don't wait ... call right away!

Larry Barnstaple* 96-281-91



"SLOW DOWN"

And start your own business in this Main Street location on a busy highway in a small village. Business on main level & enjoy the comfort of the renovated apt. upstairs.

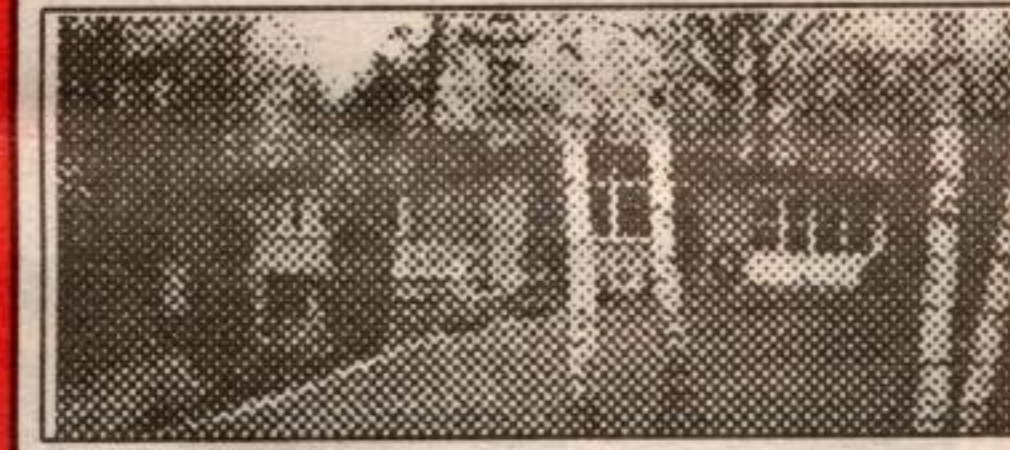
Wilf Moore* 95-663-91



SPECIAL BACKSPLIT

Country squire with double garage in desirable location, well landscaped lot. Call now for your appointment to view!

Carol McMurray* 96-389-30



COUNTRY LIVING IN TOWN!!

1.42 acre beauty, shows to perfection, 8 skylights, 5 french doors, 40' sunroom, professionally finished basement with walkout. Asking \$299,000.

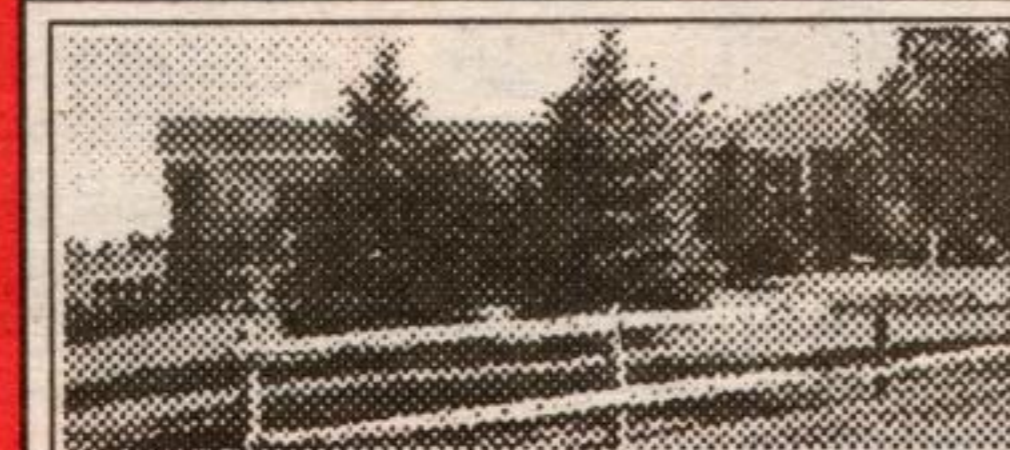
Pam Reid* 96-256-30



ALL THE EXTRAS - \$379,000

Builder's own privately situated on 2+ landscaped acres. Solarium, Kitchen/family room combo, finished lower level with walkout & finished loft over garage. Quality throughout.

Martha Summers* 95-623-91



IT'S GOT IT ALL!

Exceptional 10 acres, beautifully landscaped, quality barn 52 ft. x 32 ft., two ponds, overflowing well. Immaculate 4 or 5 bedroom bungalow. Don't wait, call.

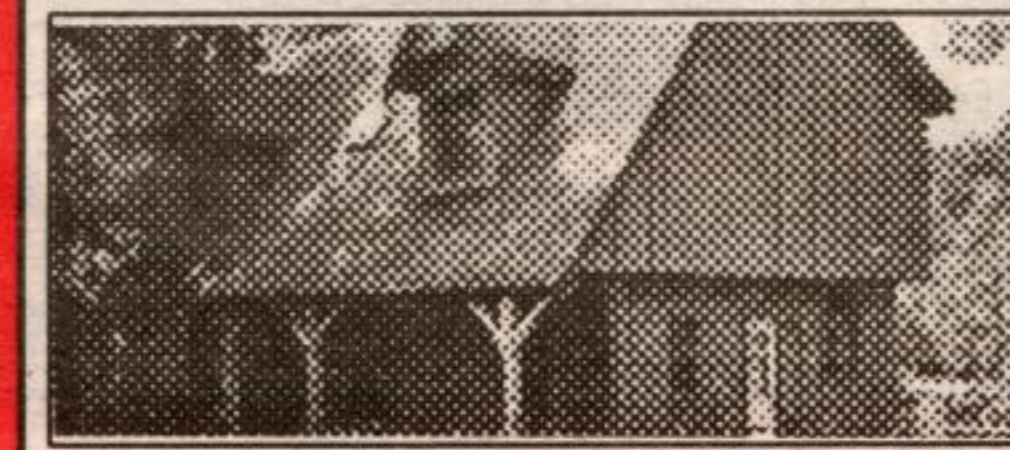
Larry Barnstaple* 96-365-91



NATURE AT YOUR BACK DOOR

... with this private ravine lot. Extra large windows, hardwood and ceramics, hot tub on the deck, 4 bedrooms and more.

Call Rod* or Dinah* Presswood for info. 96-406-30



UNIQUE CAPE COD

Nestled on the banks of Silver Creek. 3 bedroom country style with wonderful pine interior. Situated on 1/2 acre with panoramic views. Asking \$249,900.

Jessie* or Jackie* 96-378-30



OPEN CONCEPT

with wonderful country view on 58 prime acres. Custom built with quality and style in mind. Approx. 4500 sq. ft. main level plus an additional 4500 sq. ft. on three other levels. 360 degree views from the vaulted ceilings, 3 car garage, stream and utility building. \$749,000.

Martha* or Larry* 96-273-91

ERIN 45 ACRES. Large scenic parcel with pond, hardwood bush & rolling open meadows. Near Terra Cotta & minutes to Georgetown. Numerous home building sites. Contact Tom Comery* 95-557-VL

LOVELY 2 ACRE BUILDING LOT. On year round gravel road, just minutes from Hillsburgh. Priced to sell at \$57,000. Call Rick Curry* 96-234-VL

VACAN



Jim Akers**
Res. 873-6744



Pat Akers*
Res. 873-6766



Stewart Barclay*
Res. (519) 927-9515



Larry Barnstaple*
Res. (519) 833-9578



Tom Comery*
Res. (519) 855-4856



Rick Curry*
Res. (519) 856-4176



Kathleen Dobbie*
Res. 877-7393



Elizabeth Doell*
Res. 873-3938



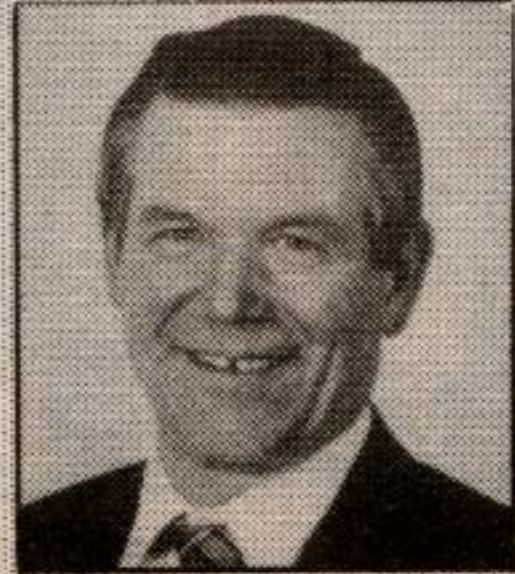
Jessie Jacobs*
Res. 877-5790



Maida Lundy*
Res. (519) 833-2430



Carol McMurray*
Res. 877-7137



Wilf Moore*
Res. (519) 855-4914



Sandra Nairn*
Res. 873-6146



Brenda Payton*
Res. 877-7578



Dinah Presswood*
Res. 877-7303



Rod Presswood*
Res. 877-7303