

Students urged, 'Lungs are for life' 'Under-utilized' Cultural Centre fees unlikely to change

As municipalities across Ontario adopt by-laws to restrict smoking in restaurants, bars and other public places, The Lung Association is also working to prevent young people from ever starting to smoke.

The Lung Association's Lungs Are For Life School

Program teaches students in kindergarten through Gr. 12 that the majority of people don't smoke and that avoiding the temptation to try smoking will result in a far higher quality of life.

"We know the best way to keep our young people healthy today and in the years

to come is to help them avoid the temptation of lighting up that first cigarette," said Dr. Roger Haddon. "Smoking is the number one cause of preventable death and of lung disease. We're seeing smoking pushed out of public places and have come to better understand the devastating effects of smoking and of second-hand smoke. Lungs Are For Life show students they will be happier and healthier if they are smoke-free."

The program is offered to all schools in Halton. "We need to reach as many students as we can," Dr. Haddon said, adding, "We owe it to ourselves and to our children to keep them healthy and help them make the right choices."

In recent Angus Reid and Environics surveys, the majority of those polled agreed that restaurants should be 100 per cent smoke-free and that tobacco companies should not be able to advertise cigarettes by sponsoring the arts.

For further information call The Lung Association, Halton Region at (905) 847-1033.

BY FRANCES NIBLOCK
The Georgetown Gemini
Georgetown Globe Productions, a community musical theatre group, wants Town Council to reconsider what its president, David Ambrose, called a "dramatic increase in rental rates" at the John Elliott Theatre but that is unlikely to happen.

During budget debates Council, in an attempt to make sure that users pay for programs and facility rentals, increased performance rental rates at the John Elliott Theatre by 32 per cent and the rehearsal rate by 55 per cent.

Describing the increases as a "shocking blow" in a letter to Council, Ambrose said the new facility rental charge, along with tough financial times, has pushed Globe to the limit of being able to afford to produce the quality shows audiences have

come to expect.

Ambrose said that rental of the theatre is the highest figure in their production budget - 16 per cent of the total, and that the new rate increases would increase that cost by another 11 per cent.

Ambrose argued that the rate increase was compounded by a ticket price increase of 11 per cent to cover the box office service charge implemented less than a year

"The John Elliott Theatre is a very under-utilized facility and this increase in rental rates will not help it in attracting more theatre to Halton Hills," Ambrose wrote.

"The arts continue to struggle in this community for higher profile and we look to the Town Council and the Recreation and Parks department to help in any way possible - but definitely not by pricing our only theatre out of reach of the community groups which are its bread and butter."

Ward 3 Councillor John Day asked staff what

the municipal position that would be conveyed to group with rate increase concerns would be and asked if there could be a report for Council.

Administrator Ray King noted that it's a matter of timing in that staff will be looking at all user fees this year to determine the appropriate costs.

"We do have a (municipal) position in the sense that the rates that form part of the 1996 budget are reflected in the rent rates we charge," King said.

"In terms of change, I think it's appropriate to say that staff would probably not be inclined to write a report right now suggesting reductions, but that we want to review all the rates given the objectives of this Council of a zero per cent mill rate (increase) and in terms of keeping costs down."

Mayor Marilyn Serjeantson noted that Council made the choice to go with a zero per cent tax increase and that "we made the rate increase decisions."

Former tenant charged

A former Georgetown resident was charged with break and enter last Thursday morning at a Rexway Drive residence.

A tenant in the house saw the man, who once lived in a separate part of the same residence, in a part of the house he was not permitted to enter. The former resident, now living in Mississauga, was charged with break and enter and will appear in court, Sept. 16.

"... dramatic increase in rental rates ... a shocking blow ..."
- Globe Theatre president

New Opening in Rockwood Introducing



Deer Run Stables

Small and Private

Ideal for the learning experience
English riding lessons with
loveable and safe school horses
or with your own.

CEF Coach (519) 856-9322

Experience...
the



WRIGHT ATTITUDE

ANTIQUES &
ECCENTRICITIES

Plus

ARCHITECTURAL STAINED GLASS
by GORDON WRIGHT

Reproduction Furniture in Antique Pine
by Fred Savage Fine Cabinetmaking

9 Main Street (Erin Commercial Plaza), ERIN
Phone: (519) 833-0061 Fax: (519) 833-0752

A unique approach!

Say it with...

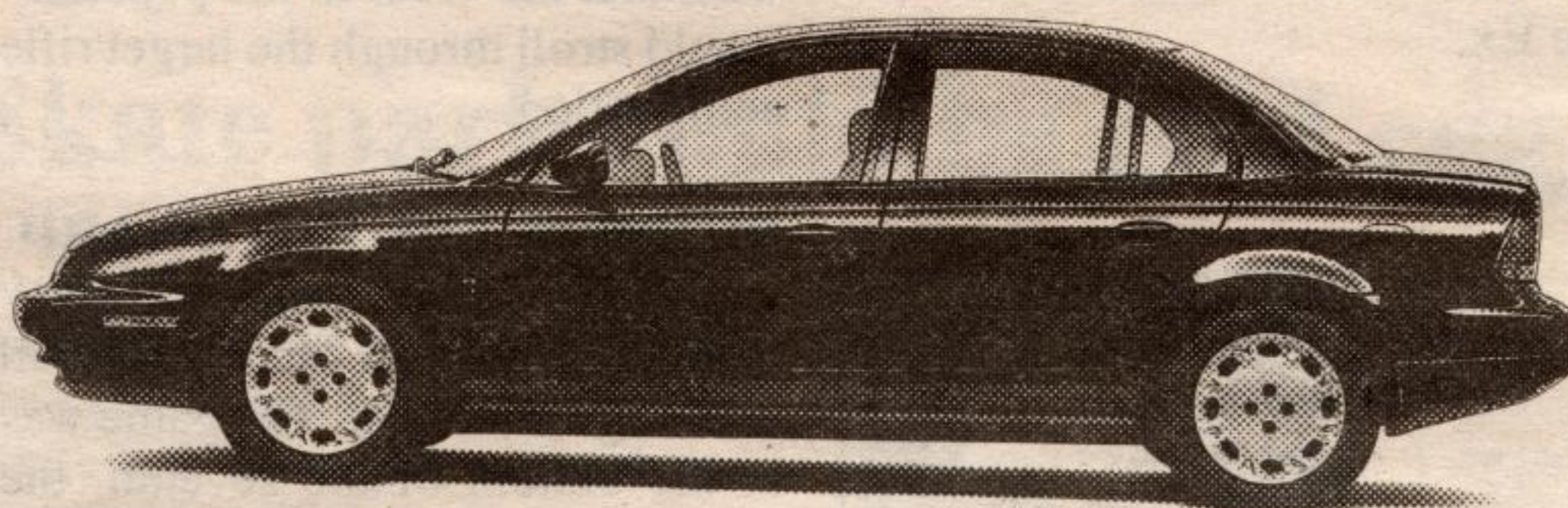
BALLOONS
by
BLAKE

Free decorating consultation for weddings,
anniversaries, birthdays and other special occasions
Ceramics, Gifts and Balloon Bouquets

119 Mill Street, Georgetown L7G 2C7 • 905-877-9423 • Fax: 877-0293
LOCATED IN THE FRONT OFFICE OF C&S PRINTING

Use Your GM VISA Points Here

We won't give you a hard sell, but our customers will.



Our best salespeople don't even work for Saturn. They just happen to own Saturns. Which explains why most people who come to look at our cars already know a fair bit about them. From their neighbours, co-workers or friends.

So we never have to push our rust and dent-resistant polymer panels, our no-dicker-with-the-sticker policy and our commitment to customer service. After all, that would be giving you something you don't really need. A sales pitch.



A DIFFERENT KIND OF COMPANY. A DIFFERENT KIND OF CAR.

1997 SL1 Now Available for Viewing

SATURN • SAAB • ISUZU OF BRAMPTON

8046 Dixie Road, Brampton (905) 796-7960