



The newly-elected executive officers of the Canadian Ladies' Curling Association which was formed February 2nd in Toronto with delegates from nine provinces attending are, from left to right, Mrs. Thirza Kirk, Port Arthur, Ontario, Secretary-Treasurer; Mrs. Hazel Watt, Port Arthur, Ontario, President and Mrs. Muriel Youngson, Regina, Sask., Vice-President. Representatives of all provinces except Newfoundland, formed the Canadian Ladies' Curling Association with Dominion Stores Limited as their sponsor, during a two-day meeting in Toronto. The first National Ladies' Curling Championship, called the Dominion Diamond "D", will be held in Ontario in 1961. The 1962 round-robin championship Dominion Diamond "D" will be held in Regina, Sask., home of Mrs. Youngson, the Vice-President.

Across the Kitchen Table

By MRS. MAC

March 6 to 12 is being observed as Education Week throughout Canada and some interesting facts have been coming into this office regarding it.

In one release from the Canadian Conference on Education in Ottawa they sort of apologize for the fact that there is not the marked improvement in the interest and effort in education over previous years, that they had hoped for. But they still believe that Canadians deserve credit for their heightened

awareness of educational problems. They ended their release with these words: "Perhaps you would like to compare your own community's educational situation with these National averages." And here are the National averages; perhaps these figures should make some of us pause and think before we blast off at the increase in taxes that will be directed our way for a new school or an addition to an old one.

In 1957 Canadians spent on cars, \$1,865 million dollars, in 1958 they spent \$2,074 million, an increase of \$209 million.

On tobacco and alcoholic beverages they spent in 1957, \$1,322 million, in 1958 the amount was \$1,424 million, an increase of \$102 million more.

On EDUCATION, in 1957, the amount spent was \$1,020 million, in 1958 it was increased to \$1,070 million an increase of \$50 million.

On the one hand they spent a substantial amount of money to educate their children and prepare them to make their own living and on the other hand, they spent six times as much on cars and alcoholic beverages that are responsible for killing, maiming, and ruining the home lives of thousands of those same children.

Surely, soon the pendulum will begin to swing back and parents will begin to think, plan and act in terms of sanity and common sense.

Bucke Board Beefs At Rail Crossing

Bucke township school board isn't happy about the railroad crossing on the Haileybury road. The crossing has to be travelled each day by a school bus.

At its recent meeting the board decided to send a resolution pointing out the dangers of the situation to A. R. Herbert, MPP for the district; R. S. Chapman, department of highways engineer at New Liskeard; and to the Ontario Northland Railway.

A change in policy concerning the use of the auditorium at the North Cobalt public school was announced. After March 31 meetings by organizations will not be permitted in the auditorium except for purposes directly connected with the school or pupils. The board is of the opinion that letting a great many organizations use the auditorium is adding to the costs of upkeep.

This will not apply to the annual ratepayers' meeting, nor the meetings of the Home and School Association or the Women's Institute.

Day of Prayer At Baptist Church

Mrs. W. Davis of the Baptist church gave the call to worship when the Women's World Day of Prayer was held in the Baptist church.

Taking part in the different parts of the program were Mrs. E. Sad-

ler of the Gospel Hall who took the worship, Mrs. M. Crooks of the Baptist church read the Scripture, Isaiah, chapter 58, and St. Matthew, chapter 25.

The Dédication was given by Mrs. Charles McRoberts of the Pentecostal church and Mrs. G. L. Cassidy of the Anglican church gave the intercession. Mrs. Don Davidson of the Baptist church sang as a solo, "If I Have Wounded any Soul To-day," accompan-

ied by Mrs. Walter Gagnon at the organ. Mrs. Gagnon acted as organist throughout the Service.

The address was given by Mrs. Lieutenant Kennedy of the Salvation Army in New Liskeard, on the theme "Labourers together with God."

The service was closed with the hymn, "The day Thou Givest, Lord, is ended."

Mrs. G. Kranz and Mrs. G. Kelly acted as ushers.



A GENERAL MOTORS VALUE

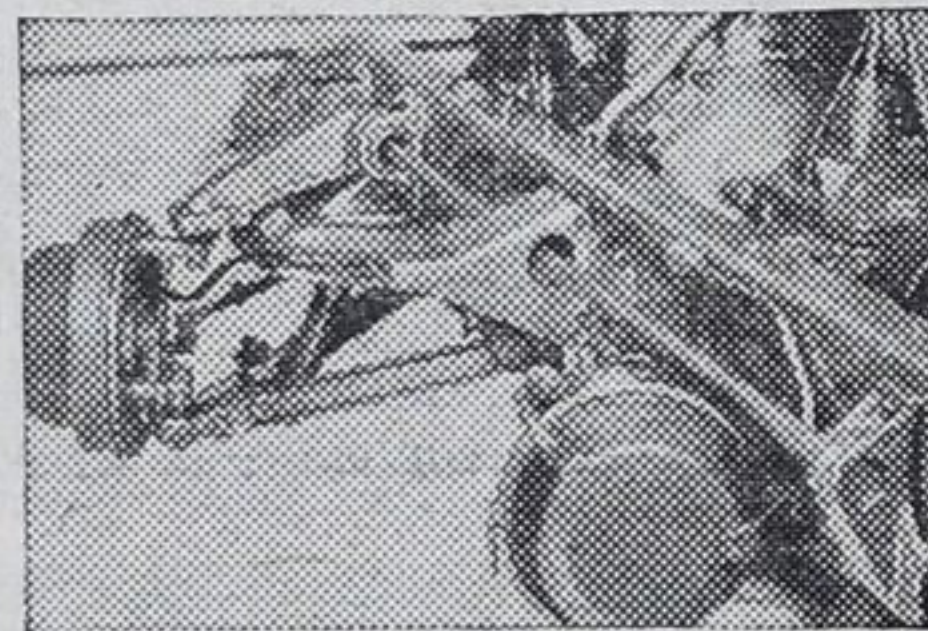
Chevrolet Trucks outwork, outlast 'em all

Exhaustive testing proves major components last up to four times longer.

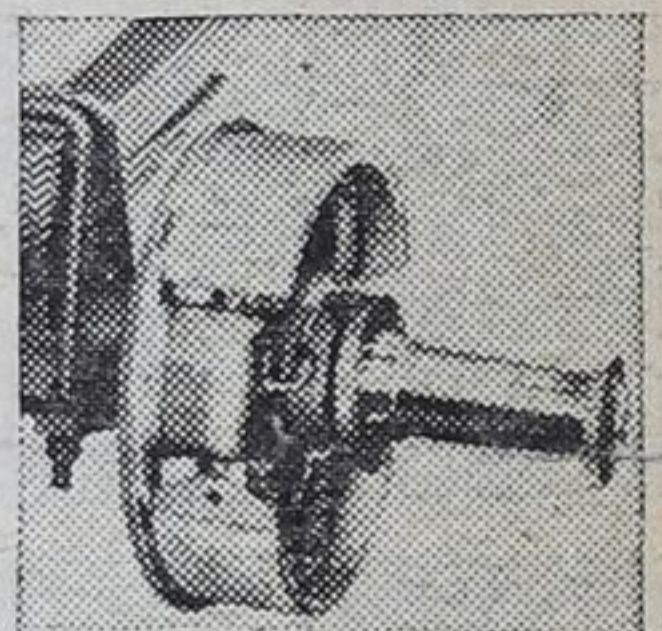
Totally new cabs proven 67% more twist-resistant.

New frames for many models up to 4.8 times more torsionally-rigid.

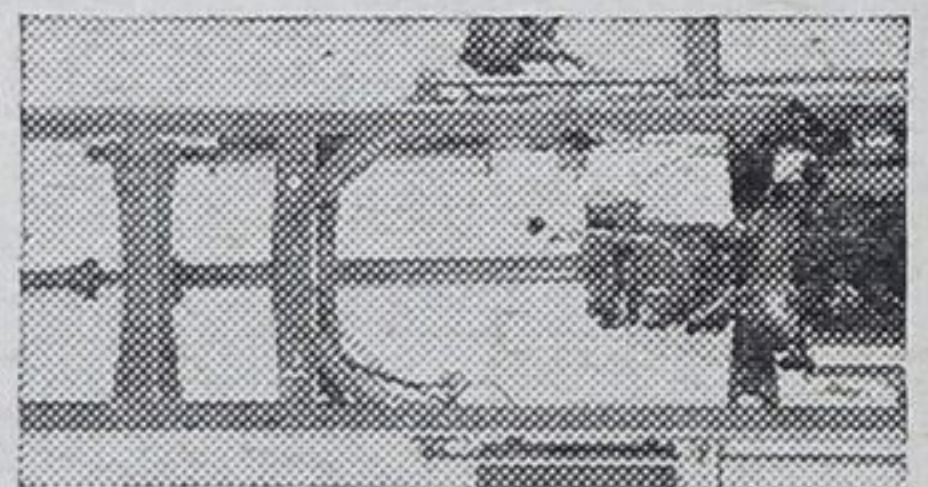
These are typical 1960 Chevrolet Truck facts and figures. They, plus Chevrolet's revolutionary new features, mean more profit, through: longer life, less maintenance, easier working, oversized cargo space, extra economy.



NEW front suspension features radically new independent torsion springs. Now Chevrolet's front wheels step right over bumps. Tough torsion springs soak up shocks. As much as 58% of objectionable road shock is absorbed before it reaches truck body, sheet metal, or driver.



NEW brakes provide maximum safety in bringing a loaded truck to a fast, sure stop. Extra-wide lining wears longer. Choose from vacuum-hydraulic units, air-hydraulic and full air-brakes.



NEW box-section frames, provide new do-the-job brawn. Chevrolet's box-section, rail design frame is stronger than ever. Massive "K" or "X" brace cross-members increase truck stamina by adding to torsional rigidity.



NEW precision-balanced wheels. This typical Chevrolet attention to detail gives easier safer handling, longer tire life, less shimmy. Remember Chevrolet truck front wheels are factory balanced.

Look into Chevrolet value today. You'll find that Chevrolet is really built to build your trucking profits to a new high. You'll find dozens of extra convenience and profit-making features such as the way Chevrolet's big new full-width hood and low fender crown make underhood components more accessible for faster, easier servicing. You'll find variable-rate rear springs that come in high capacities to accommodate big payloads, adjusting spring resistance automatically as you add

more weight to the truck. And in the power department you'll find that there's no match anywhere for Chevrolet's high-power, high-torque V8's or tough dependable 6's. Every Chevrolet power-plant gives you peak performance with maximum economy. There's no end to the reasons why it will profit you to see your Chevrolet dealer today about Chevrolet Trucks' big new build. He's waiting for your call, do it now!

...and outsell 'em all too!



1960 CHEVROLET STURDI-BILT TRUCKS

See your authorized Chevrolet Truck Dealer today!



CT-860B

HAILEYBURY GARAGE LTD.

CHEVROLET - OLDSMOBILE - CHEV. TRUCKS

Dial OS 2-3001

Ferguson St.

Haileybury

News from the Evelyn Shoppe

This is the Spring when you should approach clothes shopping in a light and fancy-free mood. And that you can do, if you browse in the spring fashion collection at Evelyn's! There you will see many new and fascinating fabrics and the easy - to - wear slightly relaxed lines. The suit with the shortened sleeves, many belted and slightly fitted, others short and boxy, the stroller suit.

The lightened look of fabric, colour and weave appears in the muted plaid of a three-quarter coat, in tones of oatmeal, beige and mocha. This has a matching companion skirt in the plain texture weave of the coat. The raw silk lining of the coat is again picked up in the matching silk blouse with tie at neckline. Truly a complete wearable costume and again, the coat may be worn over all your dresses as a summer coat.

A suit of interest is in bone shade with herringbone weave in soft beige and grey-blue. This has a slightly fitted jacket with loose three-quarter sleeve.

A slim casual coat in cashmere has hand stitched lapels and pockets, impeccably tailored by Gordon and comes in mocha, blue or singing red. A Linton tweed in plaid design in mellow beige tones is a striking coat in both texture and weave. And of course, you will see the perennial spring navy, shown in an all-round belted coat with large collar and cape sleeves. This is a new look and a becoming look. You will love it.

These and many more you will see at Evelyn's. Come in and make your selection while the choice is good. A deposit will hold it until Easter. Suit prices start at \$29.95.

THE Evelyn SHOPPE