



Cobalt high school was defeated 31 to 1 when they tangled with the Haileybury High School in the opening game of the rugby season played on the Mining School gridiron. The game was preceded by a parade from the high school grounds.

Innes - Inglis

A quiet wedding was solemnized in St. Paul's United Church, New Liskeard, on Thursday, September 17, when Carole Anne Inglis, daughter of Mr. and Mrs. Cecil Inglis of Latchford was united in marriage to Donald Edward Innes, son of Mr. and Mrs. James Innes of Virginiatown. The ceremony was performed by the Rev. James Young. Mr. and Mrs. Brian Sirola of Kirkland Lake attended the bride and groom.

The bride wore a street-length dress of ivory brocade material with white accessories and a corsage of red roses and lily-of-the-valley. Mrs. Sirola wore a two-piece green printed dress with white accessories and her corsage was white baby mums.

Following the wedding a buffet luncheon was served at the home of the bride's parents in Latchford, to the wedding party and immediate relatives. The happy young couple then left on a wedding trip to Southern Ontario and on their return will make their home in New Liskeard.

One of the most remarkable and valuable medical inventions of recent times is the "mechanical heart", developed by Alexis Carrel. This delicately-balanced mechanism enables organs to be kept alive outside the body. Fluids circulate through the tissue, supplying it with oxygen and food and carrying off waste products. It has saved many lives by giving vital organs a "rest" and treatment.

Canadian Club Features Many Famous Speakers

The South Temiskaming Canadian Club has lined up an imposing array of top-flight speakers for the new season which starts with a meeting to be held in New Liskeard on October 5.

The first guest speaker will be Charlotte Whitton, the famous Canadian woman, who lists as one of her many accomplishments, successful terms as mayor of Canada's capital.

Also in the roster for the year is Eric W. Morse, former National Director of the United Nations Associations in Canada. He is a member of the recently appointed Historical Advisory Committee of the National Capital Commission.

Arthur L. Phelps needs no introduction to those who listen to "Neighborhood News" on Sunday mornings, but many of his listeners do not know that he was a professor of English at the three Canadian Universities, and is currently

a special lecturer at the University of Toronto.

Willson Woodside, who will visit here in January is a well-known CBC commentator and is Canada's best known speaker and writer on foreign affairs.

In February Lt.-Gen. Guy Simonds, one of Canada's most brilliant soldiers will have as his topic "Some reflections on Canada's Defence Policy."

Other speakers during the year will be, Alan Jarvis, Director of the National Gallery of Canada; and Brig. Stephen Longrigg, who will speak on "Oil, Power, Politics and the Arab Awakening."

The new federation of the West Indies, whose first Parliament was opened by Princess Margaret last year, has proved a good soil for writers including good novelists who have won prominence in Europe.

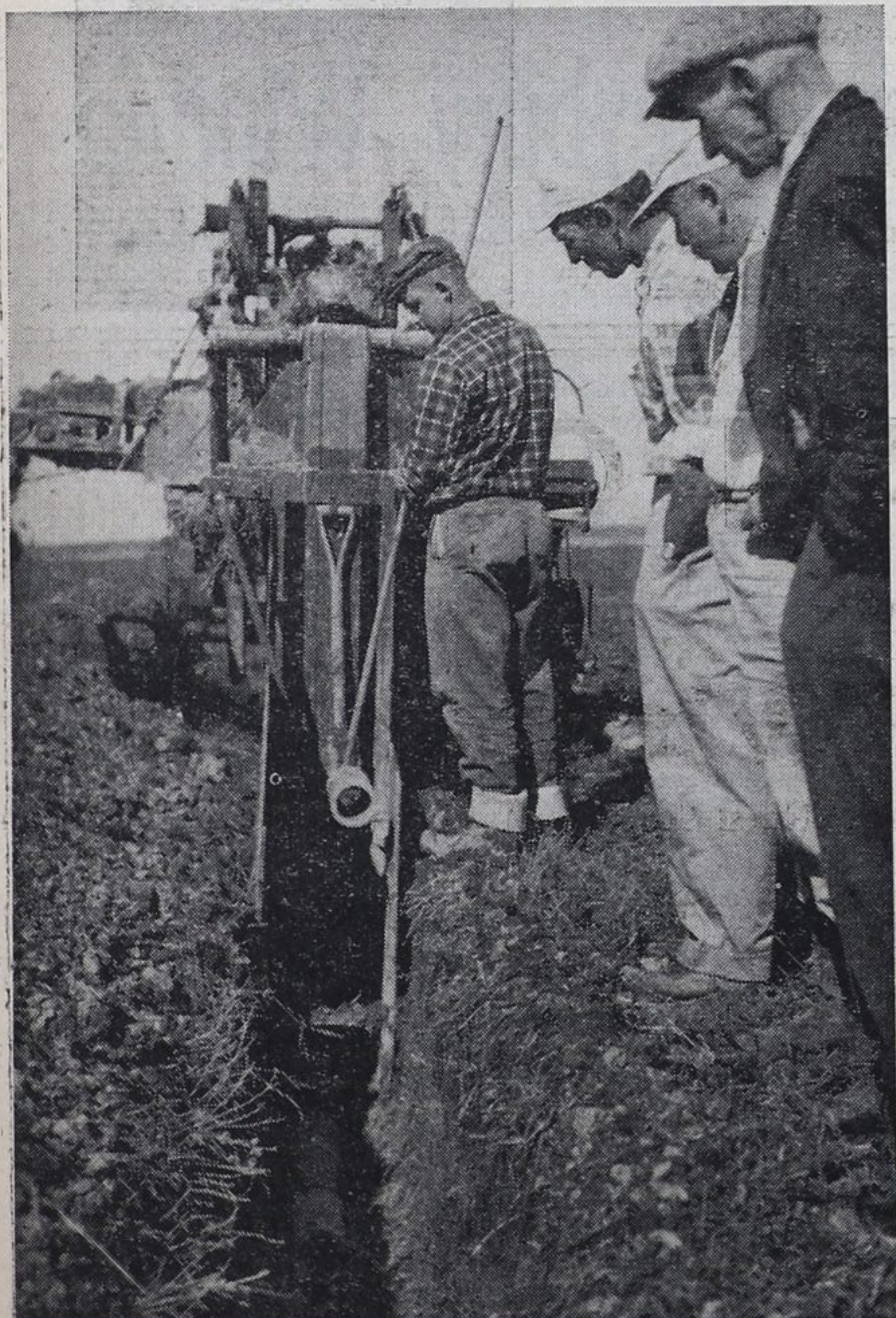
Mrs. Mary Crick

Mrs. Mary Jane Crick, pioneer resident of Brethour Township, died on September 21, in the Englehart Hospital after a long illness. She was in her 84th year.

Born in England, Mrs. Crick lived in Toronto for a while after

coming to Canada, and moved into Temiskaming in 1909. She married the late Tom Crick, in 1908 and he pre-deceased her in 1937.

Mrs. Crick is survived by two sons, Ben of Brethour and Russell of South Porcupine; three daughters, Violet of Tomstown, Marion of Marter Township and Elsie of Mount Forest.

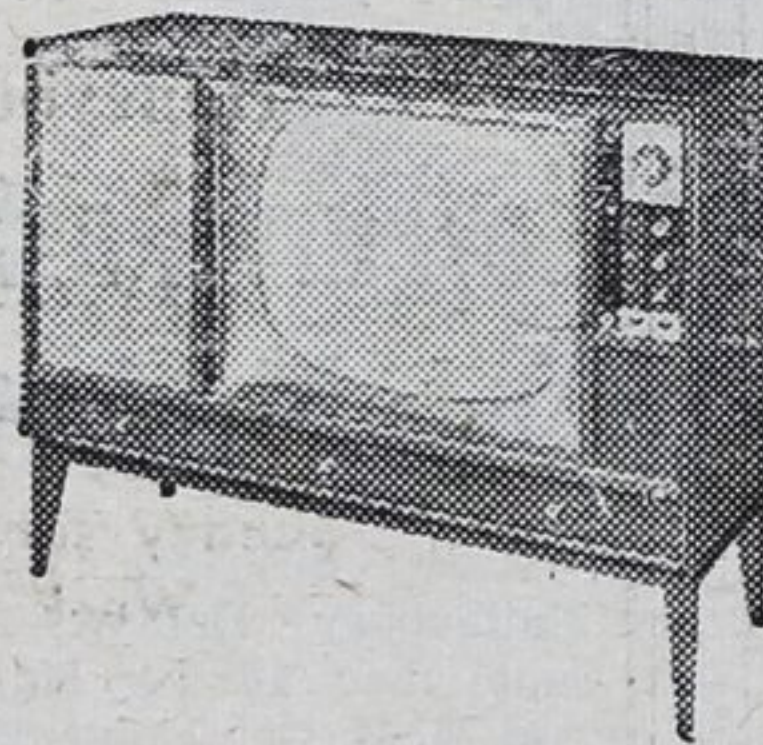


Operators of a tile laying firm make the job look easy as they apply under-draining to a section of the Demonstration Farm at New Liskeard. Many district farmers were on hand for the Open House held last Friday, saw the operation and heard the costs.

1960 WESTINGHOUSE TV

in time for the

WORLD SERIES

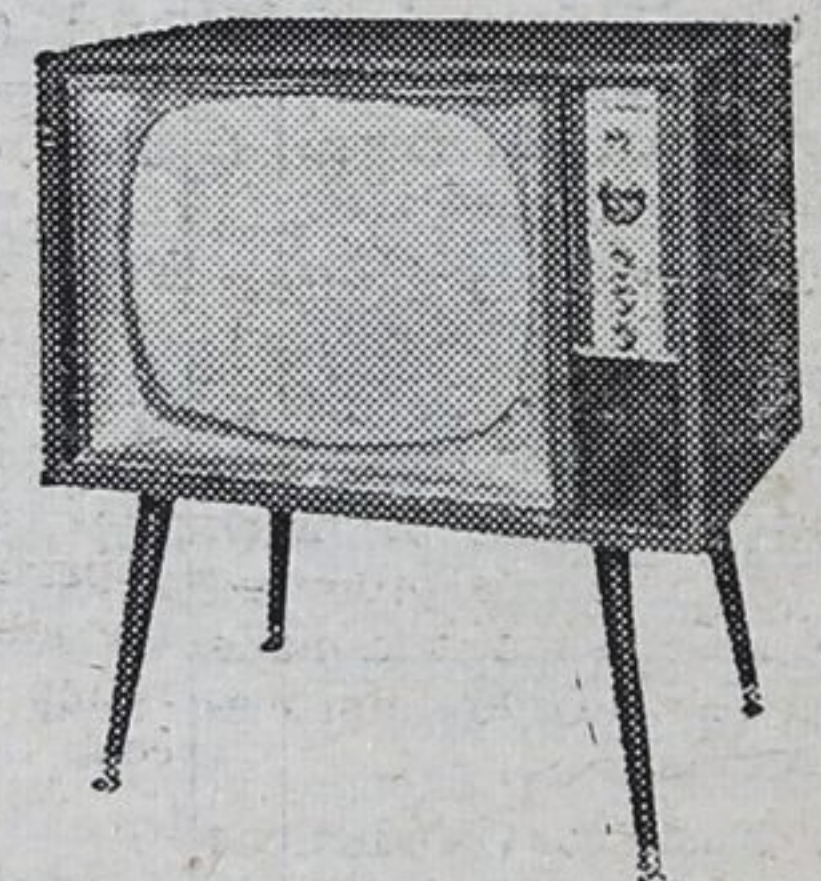


THE RIDLEY—Model 2V61K

For the modern home furnished in Contemporary American, the Ridley adds the perfect note of highlight. Handsome cabinet is hand-rubbed to bring out the full beauty of Blonde or Walnut finish. Smart decorator grille cloth blends with cabinetry . . . and your decor. Undistorted, high-fidelity sound with one 8" and two 4" full range speakers.

21" Picture.
Cabinet Dimensions: 31 1/4" high, 41 1/2" wide, 16 5/16" deep.

\$419.95



THE BELLEAIRE — Model 2V50T

Stunning table model with clean functional lines to blend with today's compact room arrangements. A member of the fine Signet Series. Finished to a high lustre in Blonde, Walnut or Mahogany wood grain finish . . . with matching legs and grille cloth. Superb Concert Tone sound and a sharp, life-like picture. Two-position contrast control.

21" Picture.
Cabinet Dimensions: 32 9/16" high, 30" wide, 18 3/8" deep.

\$289.95

WORLD SERIES SPECIAL

THE GENOA—Model 2V36T

This handsome table model features rich wood grain finish. Fashioned, with legs to match, in lustrous Blonde or Walnut finish. Push-Pull "On-Off" Control . . . Concert Tone sound. Exclusive Silver Safeguard Chassis protects set from vibration, heat and moisture.

21" Picture.

COMPLETE WITH TWO STATION ANTENNA

\$299.95

BUCK APPLIANCES

Cobalt 4685

Haileybury OS 2-3161

New Liskeard MI 7-4080