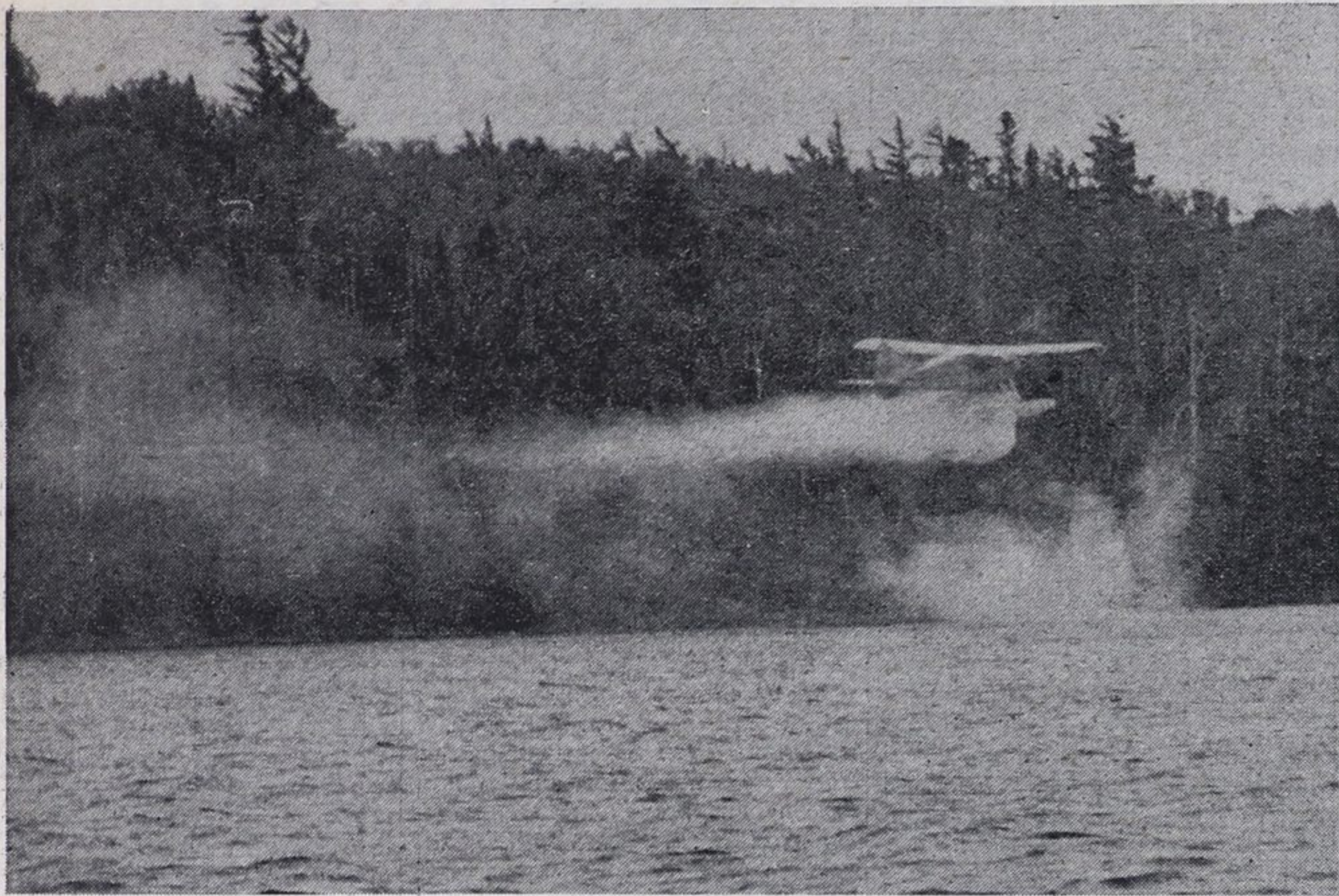


Demonstrate New Fire Fighting Methods . . .

Press, Radio & T.V. Visit Forest Outposts



Jack Lamont at the controls of a Department of Lands and Forests Beaver Aircraft showed newsmen how planes are used to fight bush fires during a tour of press, radio and TV men last Wednesday. The water tanks on the aircraft hold a total of 90 gallons and are filled by means of a small scoop fastened to the side of each pontoon. The plane then skims over the surface of a lake or large river and the water is forced into the tanks.



Publicity men in the Temagami area were treated to a tour of the area by the Ontario Department of Lands and Forests. Bill Clark, District Forester who arranged the trip is seen standing at the back of the boat as the group cast off from Bear Island.

Newsmen from North Bay and New Liskeard saw a demonstration of water bombing a bush fire during a press tour of the Temagami area, sponsored by the Ontario Department of Lands and Forests.

The exhibition took place on a small island on Lake Temagami, while two Lands and Forest cruisers were carrying the publicity men past, enroute to Bear Island. Jack Lamont, pilot of the Department's Beaver aircraft made three passes over the billowing smoke, re-filling the tanks each time as he skimmed over the water past the party of press, radio and TV men.

After a brief stop at Bear Island to compare the dampness of clothing and to argue as to who hit the biggest waves, the trip was continued up the lake to an awaiting aircraft which carried the party up to the Deputy Chief Ranger's Camp on Lady Evelyn Lake, on a bone jarring and tooth rattling flight.

The trip seemed well worth the agony of flying in the turbulent weather, as a fish dinner, prepared by Mrs. Ed Lafleur, wife of the Deputy Chief Ranger, topped off by home-made pies and cake, awaited the ever-hungry gentlemen of the press.

After a brief pause to let the dinner settle, a helicopter flight to the Maple Mountain Fire Ranger's Tower was arranged in spite of the opposition of Harry Edgar, of radio station CFCH, who was quite leary about flying in planes that didn't have wings. Harry's comment upon completing the trip was, "You get a swell view from up there, and they are smooth riding, but I DON'T LIKE HELICOPTERS."

Maple Mountain is located five air miles from the Lady Evelyn base and stands 2,000 feet above sea level. Tom Glennie mans the 85-foot tower on top of the mountain and watches over a 45 mile radius for signs of fire.

Later in a talk with Chief Rang-

er Phil Hoffman of Temagami, the Speaker was told that in most districts approximately 75 per cent of the fires are started by humans and that in the Temagami district the figure is reversed with approximately 75 per cent of the fires due to natural causes such as lightning. This, he explained, is due to the fact that the people of Temagami and the campers in that area are bush conscious and give the department their full co-operation in preventing fires. "If everyone had the sense of responsibility that these people do," stated Mr. Hoffman, "the forest fire hazard would be amazingly low."

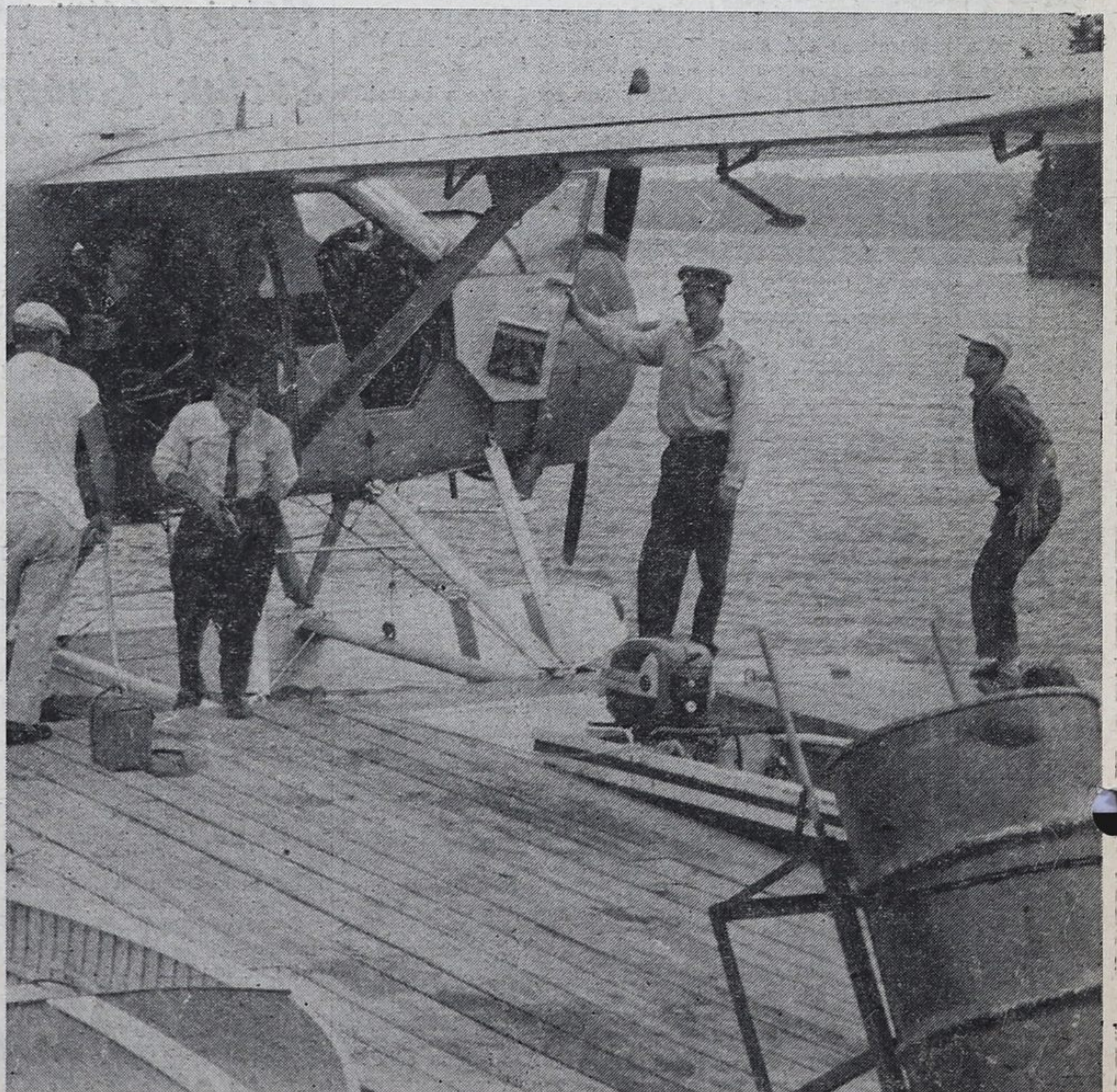
The tour was wound up with a luncheon in Temagami.

Haileybury High Exam Results

- Atchison, Bettylou—Eng. Comp., Eng. Lit., Algebra, Geom., Trig., Chem., Latin Auth., Lat. Comp., Fr. Auth., Fr. Comp.
- Caron, Marcel J.—Fr. Auth., Fr. Comp.
- Cumming, Ruth—Trig.
- Findlay, Murray L.—Eng. Comp.
- Hammerstrom, Harold—Algebra, Trig., Phys., Chem.
- Jackson, Kenneth—Eng. Comp., Eng. Lit., Geom., Chem., Fr. Comp.
- MacDougall, Dayntrie — English Comp., Zoo.
- Mikkola, Allen — Eng. Comp., Eng. Lit., Botany, Zoo., Fr. Comp.
- Neelands, Catherine — English Comp., Eng. Lit., Botany, Zoo., Chem., Lat. Auth., Lat. Comp., Fr. Auth., Fr. Comp.
- Thomson, Wm.—Eng. Lit., Algebra, Geom., Trig., Phys., Chem.
- White, Joyce—Eng. Comp., Eng. Lit., Algebra, Geom., Trig., Botany, Zoo., Chem., Fr. Auth.
- Fleming, Russell—History.



Tom Glennie, forest ranger at the Maple Mountain tower, gets set to climb to his lofty perch from where fires are detected and pin pointed for 45 miles.



Newsmen from North Bay and New Liskeard were guests of the Deputy Chief Ranger at Lady Evelyn Lake Station, last Wednesday. They are seen climbing from a Lands and Forests Beaver. Deputy Chief Ranger Ed. Lafleur is shown holding the front door of the aircraft open for them.