

HOW CAN TRAFFIC MOVE SAFELY CONFERENCE THEME



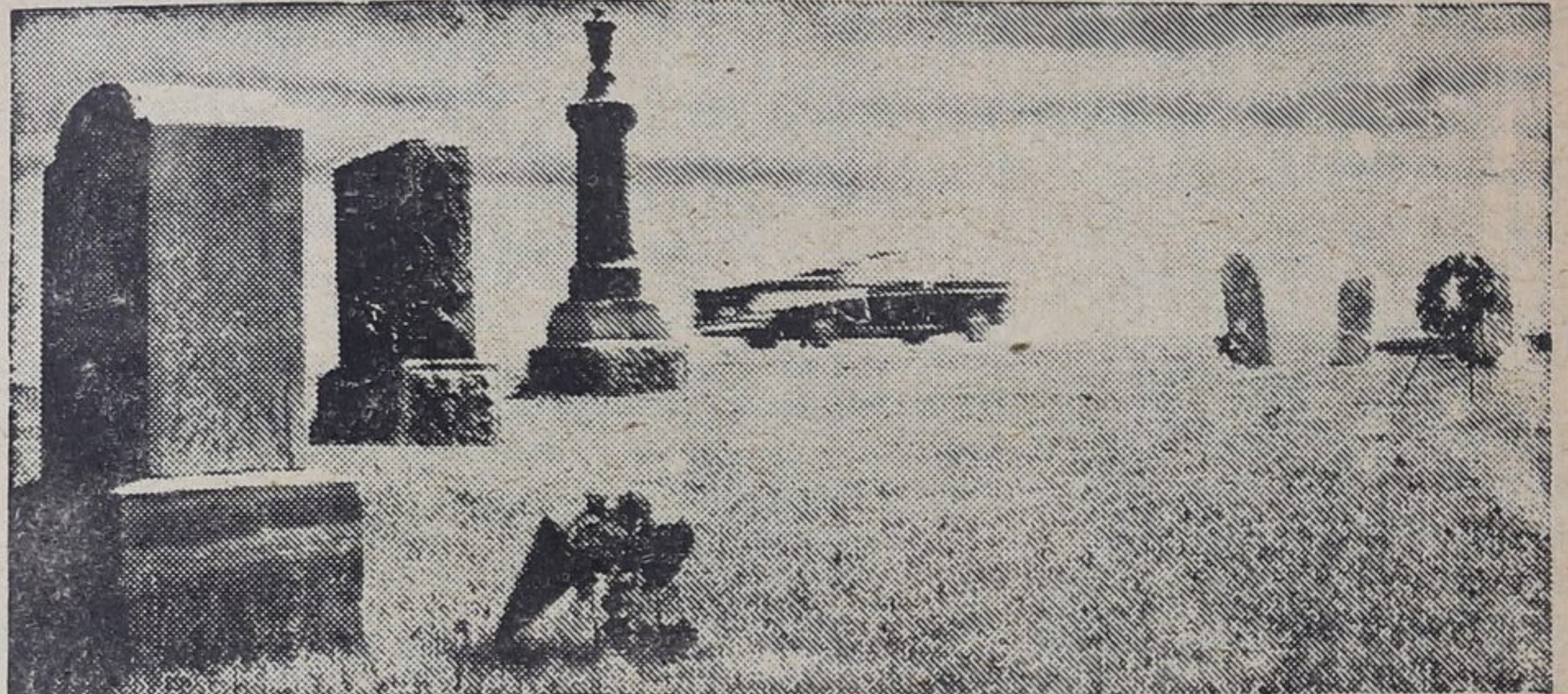
Up to 400 citizens from every walk of life are being invited to take part in a provincial Road Safety Workshop, Wednesday and Thursday, September 3-4, at the Royal York Hotel, Toronto.

Conference theme will be "How Can Traffic Move Safely?". Delegates

will be invited from local safety councils, agriculture, associations, clubs and societies, business, labour, public information media, religious leaders and women's organizations.

Aspects of the subject to be considered are community safety

organization, law enforcement by police and courts, education, engineering of highways and traffic and of vehicles, motor vehicle administration and the human factor in accidents. These topics a total of eight, will be organized for discussion in separate rooms in which delegates can rotate

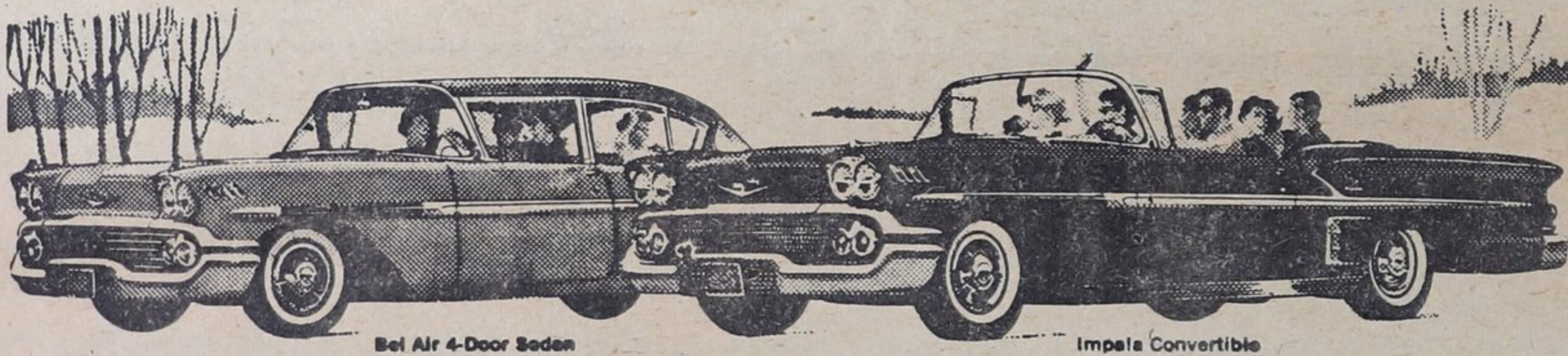


The Roger Dee hit parade

- | | |
|---------------------------------|--------------------------------------|
| 1--When | 11--A Certain Smile |
| 2--Yakety Yak | 12--I Guess Things Happened That Way |
| 3--Splish Splash | 13--Enchanted Island |
| 4--Poor Little Fool | 14--Blue Blue Day |
| 5--Hard Headed Woman | 15--Moon Talk |
| 6--Patricia | 16--Young Warm and Wonderful |
| 7--Left Right out of your heart | 17--If Dreams Come True |
| 8--Secretly | 18--Fever |
| 9--Rebel Rouser | 19--Padre |
| 10--The Purple People Eaters | 20--Think It Over |

Whistling past the graveyard

This driver is a lot closer to the graveyard than he thinks. At the speed he's going, even a minor mistake in judgment could cause a major highway disaster. Reckless speed is the cause of too many fatal accidents on the road. And sometimes even the speed limit can be misleading—you can be within the limit and still be going too fast for driving conditions. Here's an easy rule of thumb to guide you to a safe speed: always drive at a speed that will enable you to stop in the distance that's clear ahead. At night, drive at a speed that will permit you to stop within headlight range. If you are tired, or inattentive—don't drive at all. One simple way to check whether your speed is too high or not is to watch the traffic around you. If you are passing most of the other cars on the road, you are going too fast. If most of them are passing you, you are going too slow. Your Ontario Department of Transport urges you to observe the speed limits—slow down and live!



Bel Air 4-Door Sedan

Impala Convertible

Sedan? Convertible? Hardtop? It doesn't matter which Chevy model you choose, the fun is in the going in every Chevrolet! It's the car that seems to want to go places — and has the get-up-and-go to get you anywhere — five great V8's and the world's most famous Six! Take your pick!

Made to romp —



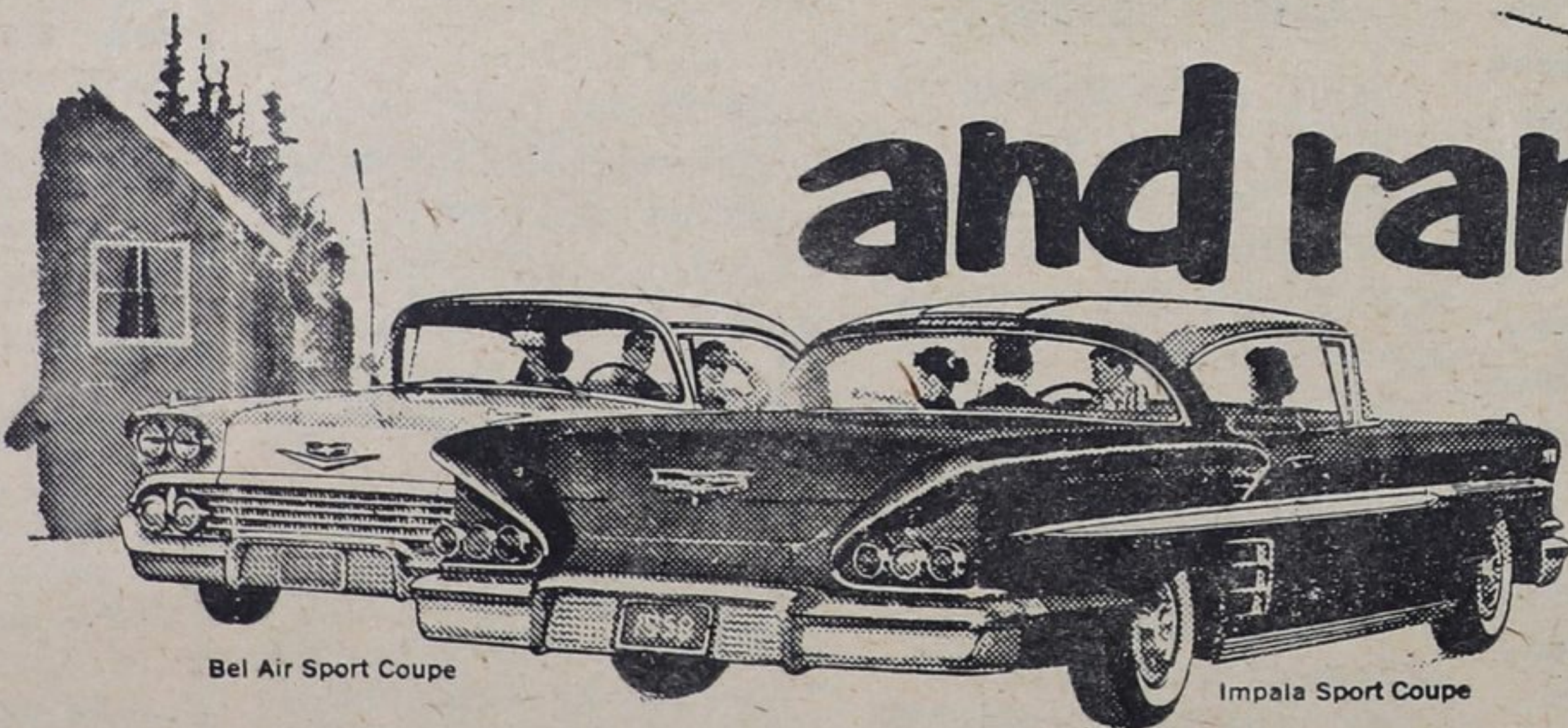
Bel Air Sport Sedan

Every Chevy's made for romping—specially a Chevrolet station wagon. There's all of 88 cubic feet of load-space ready to take anything you want—and more of it! And Chevy's easier to load, thanks to a roof-recessed liftgate with greater loading height. Handsomer — thanks to longer and lower looks!



Brookwood 4-Door 6-Passenger Station Wagon

and rarin' to go!



Bel Air Sport Coupe

Impala Sport Coupe

And just wait till you put your foot down! Accelerator or brake, response is instant, sure, safe. You might say, safe as a Chevy. Or, smooth as a Chevy, because with Full Coil suspension every Chevy gives a real road-smoothing ride. Fact is, luxury's a part of Chevrolet living—luxury at a lower price! That's why so many more people are going Chevy. Chevrolet offers so much more! Team up with one of Chevrolet's sixteen fun-packed models soon. They're ready — and rarin' — to go!

Only Chevrolet offers you the choice of a **V8 or 6** in All models and All series

CHEVROLET

HAILEYBURY GARAGE LTD.