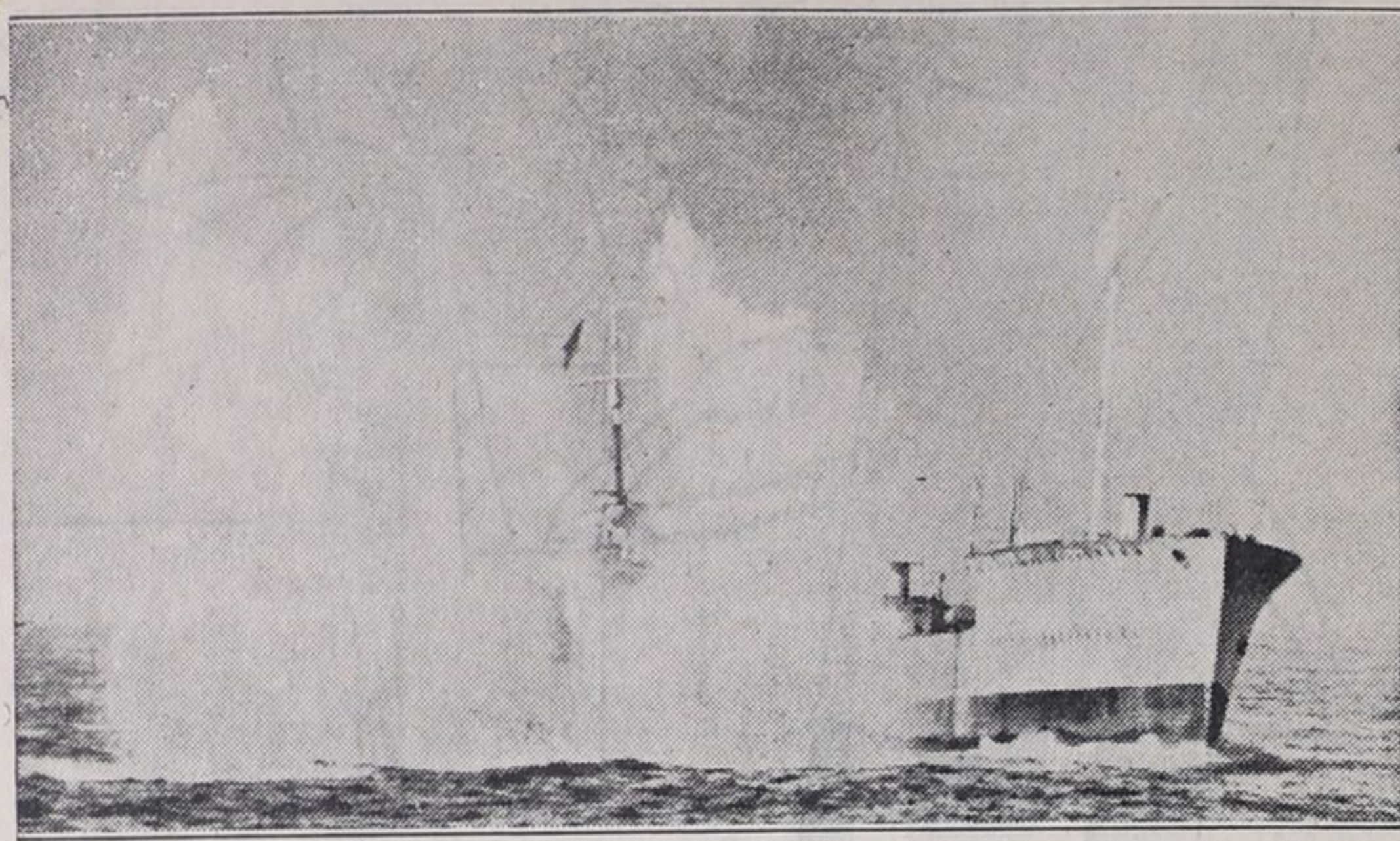


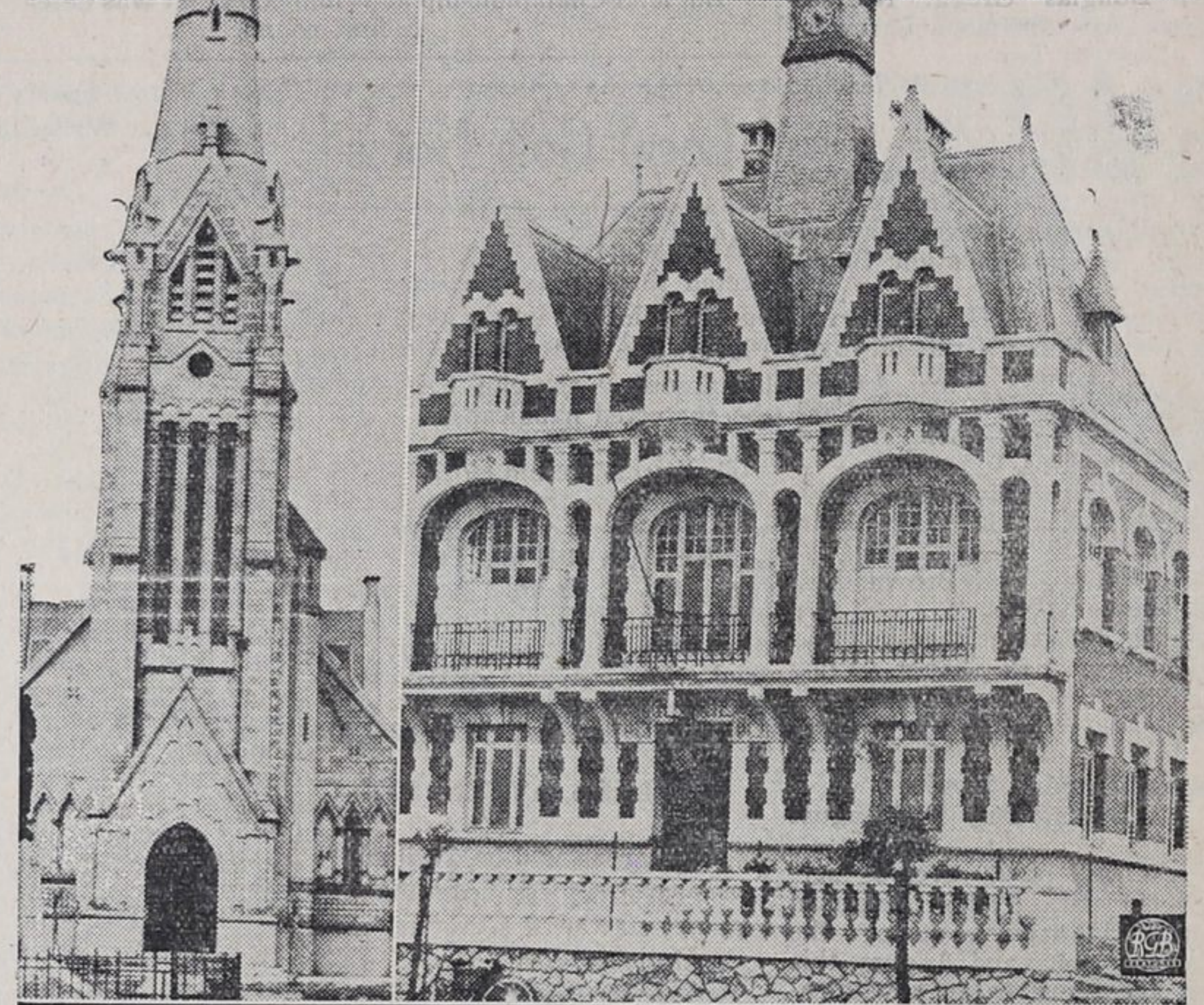
Late News Pictures and Cartoons

AUSTRALIAN NAVY PUTS ON EXTENSIVE MANOEUVRES AT JERVIS BAY



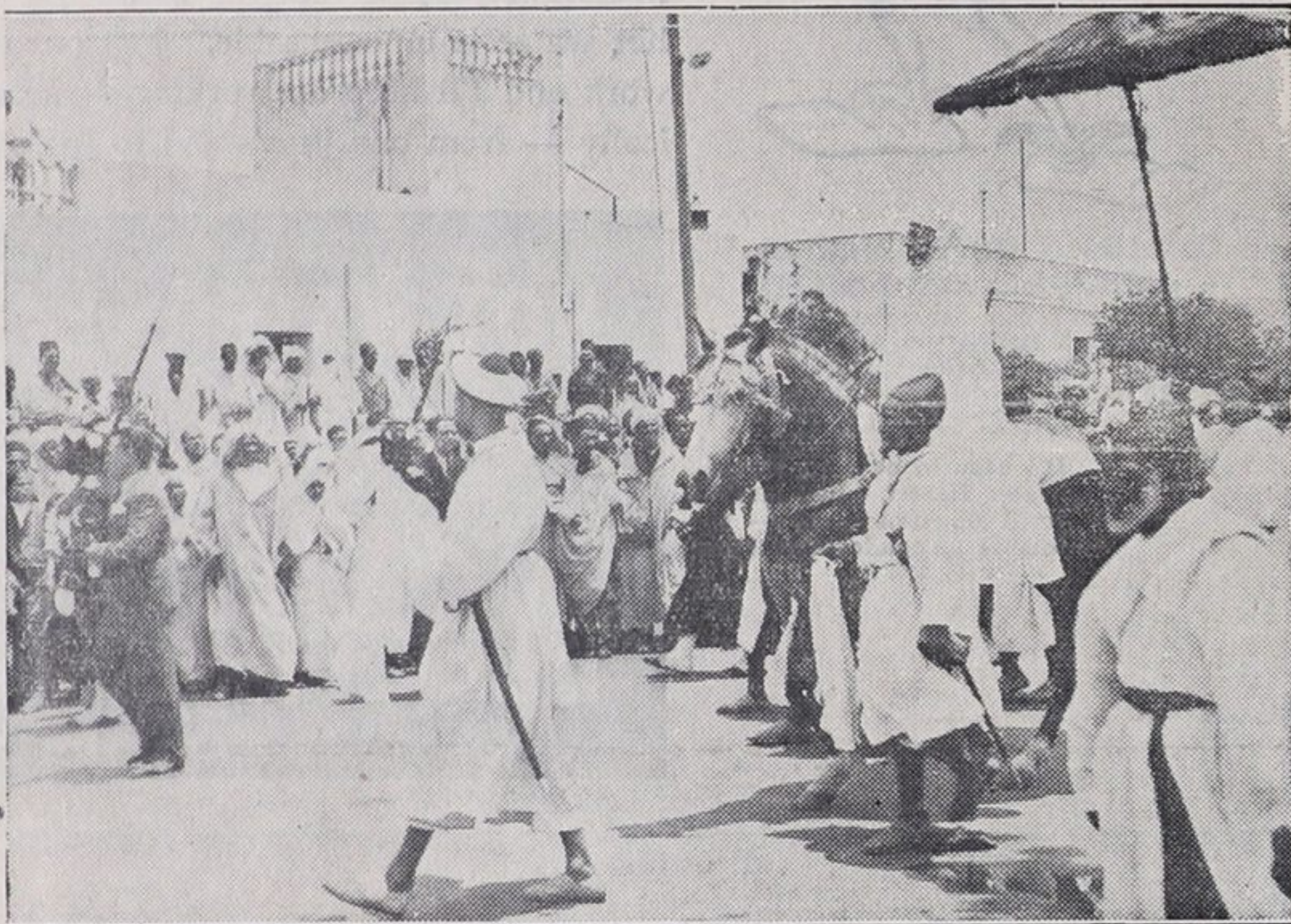
During the extensive naval manoeuvres by the Australian navy at Jervis Bay, New South Wales, the destroyer "Anzac" was destroyed by gunfire. This picture, taken with a long focus lens, shows a salvo from the flagship, H.M.A.S. "Canberra" straddling the H.M.A.S. "Anzac."

VIMY OF TODAY READY TO WELCOME CANADIAN VETERANS



When the Canadians who fought at Vimy during the World War return to the scene of their former activities for the unveiling of the Canadian War Memorial at Vimy Ridge on July 26th, they will find a new and entirely different town giving them welcome. Since those dark days in 1915-1918, the industrious French people have completely rebuilt the town, and except for special exhibits, graves, and memorials, the average traveller could not tell there had been a war. These pictures show Vimy as it is today. At the top is a general view of the town with the Canadian War Memorial visible on the brow of the ridge. At the lower left is the new church, while at the right is the Town Hall.

SULTAN OF MOROCCO CONSECRATES NEW MOSQUE

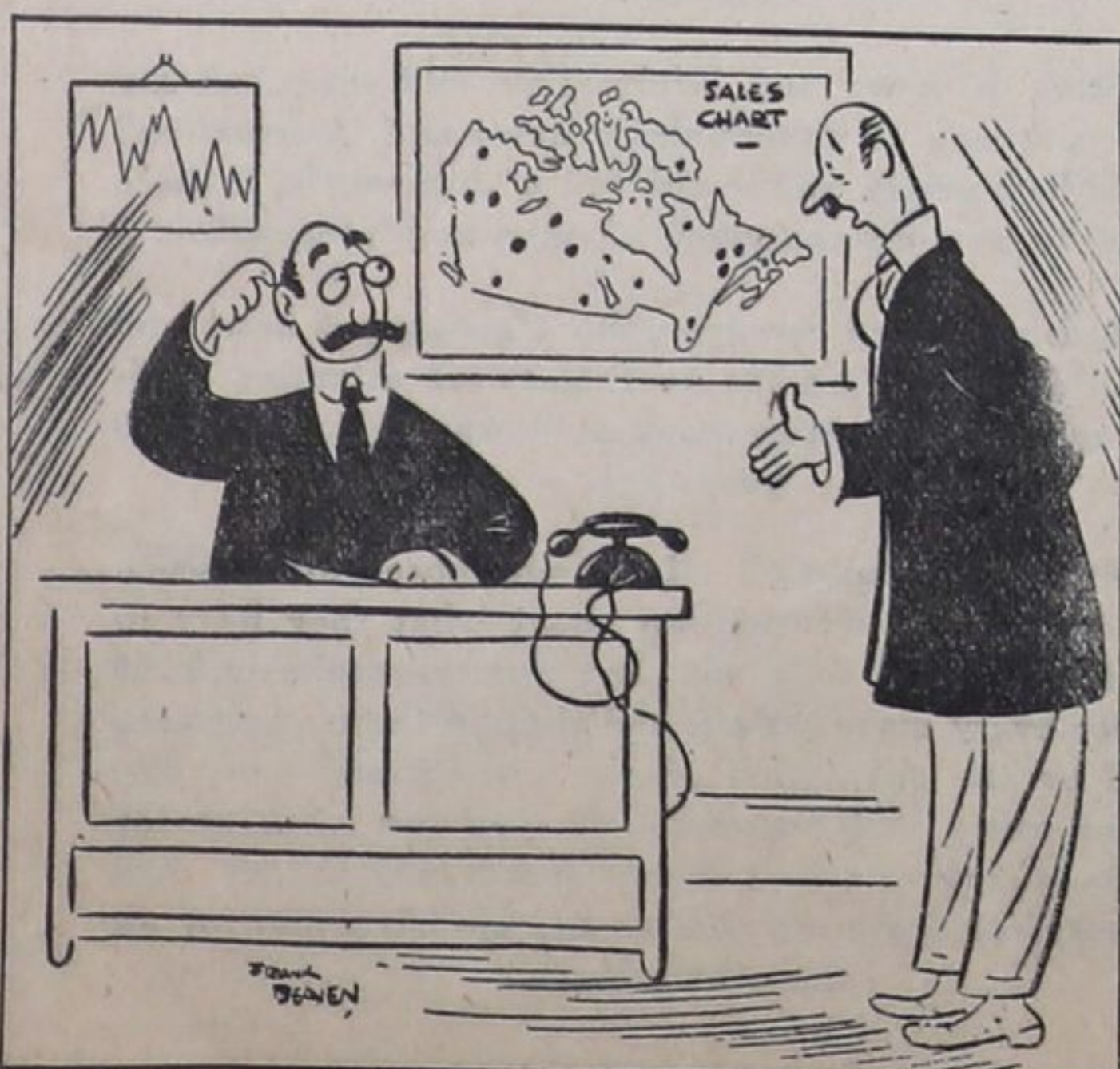


This picture, taken at Casablanca, Morocco, shows His Majesty the Sultan of Morocco at the head of the procession proceeding to consecrate the new mosque "Sidi Mohamed," considered the most beautiful in North Africa.

FANCIFUL FABLES

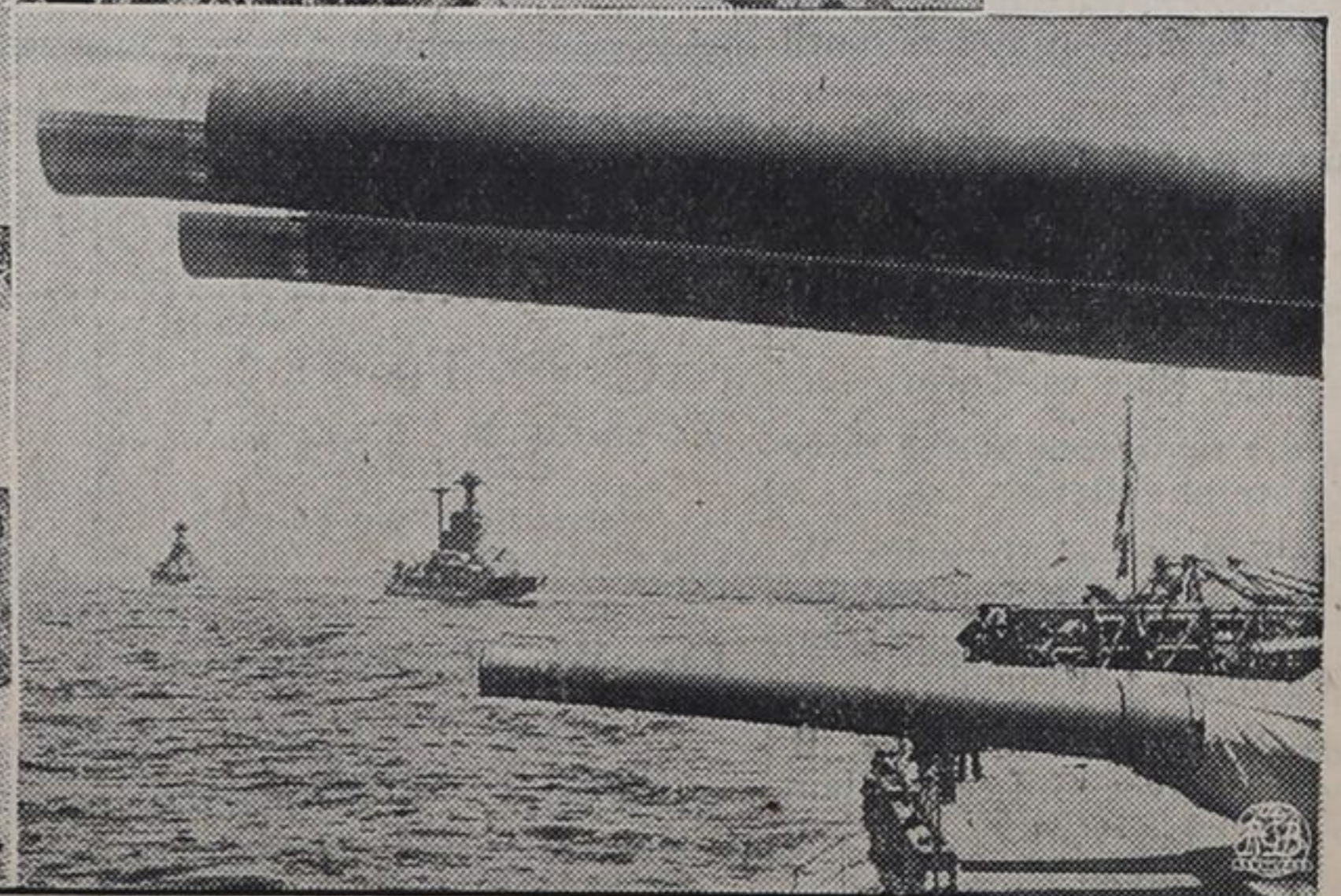
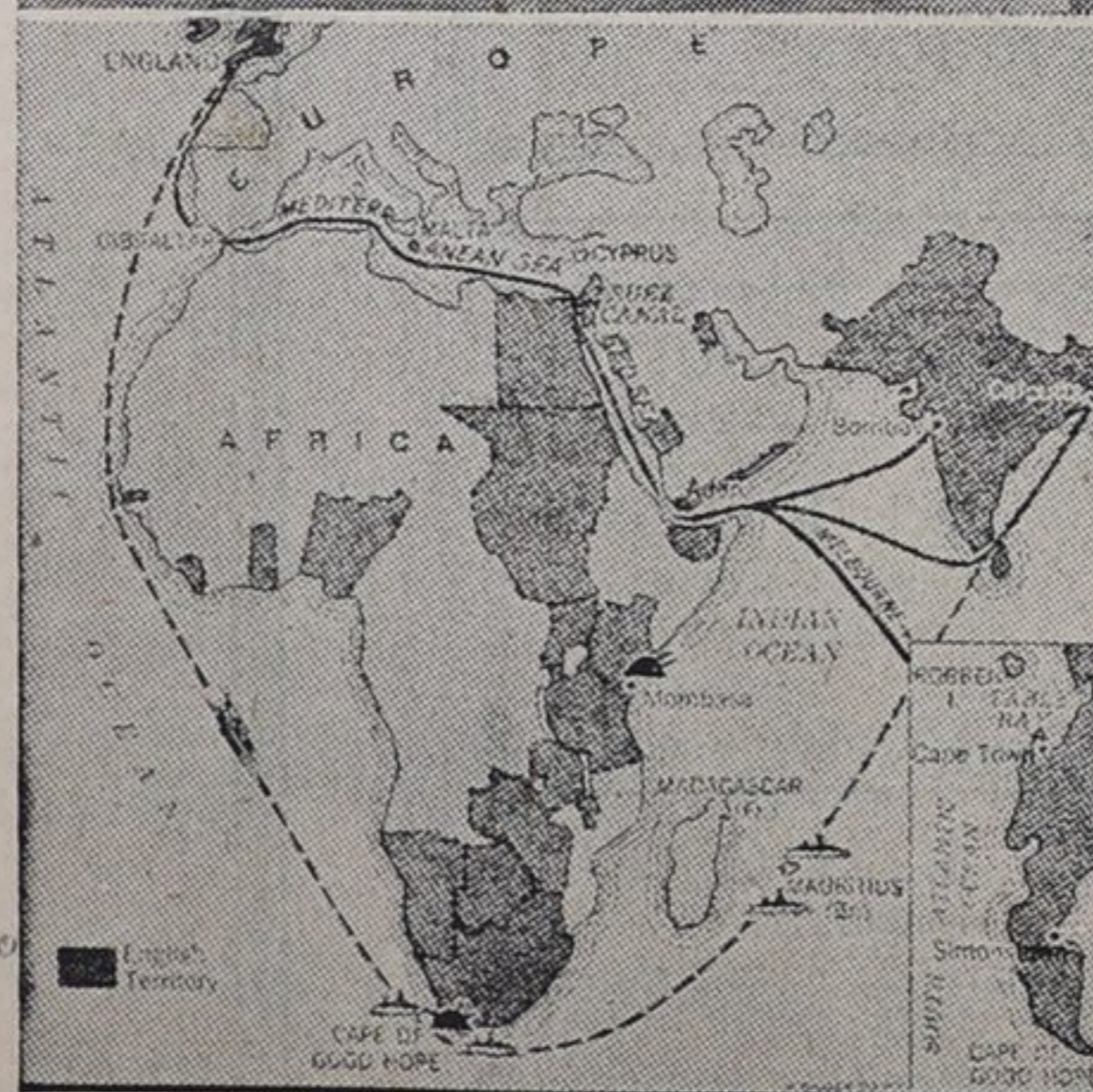
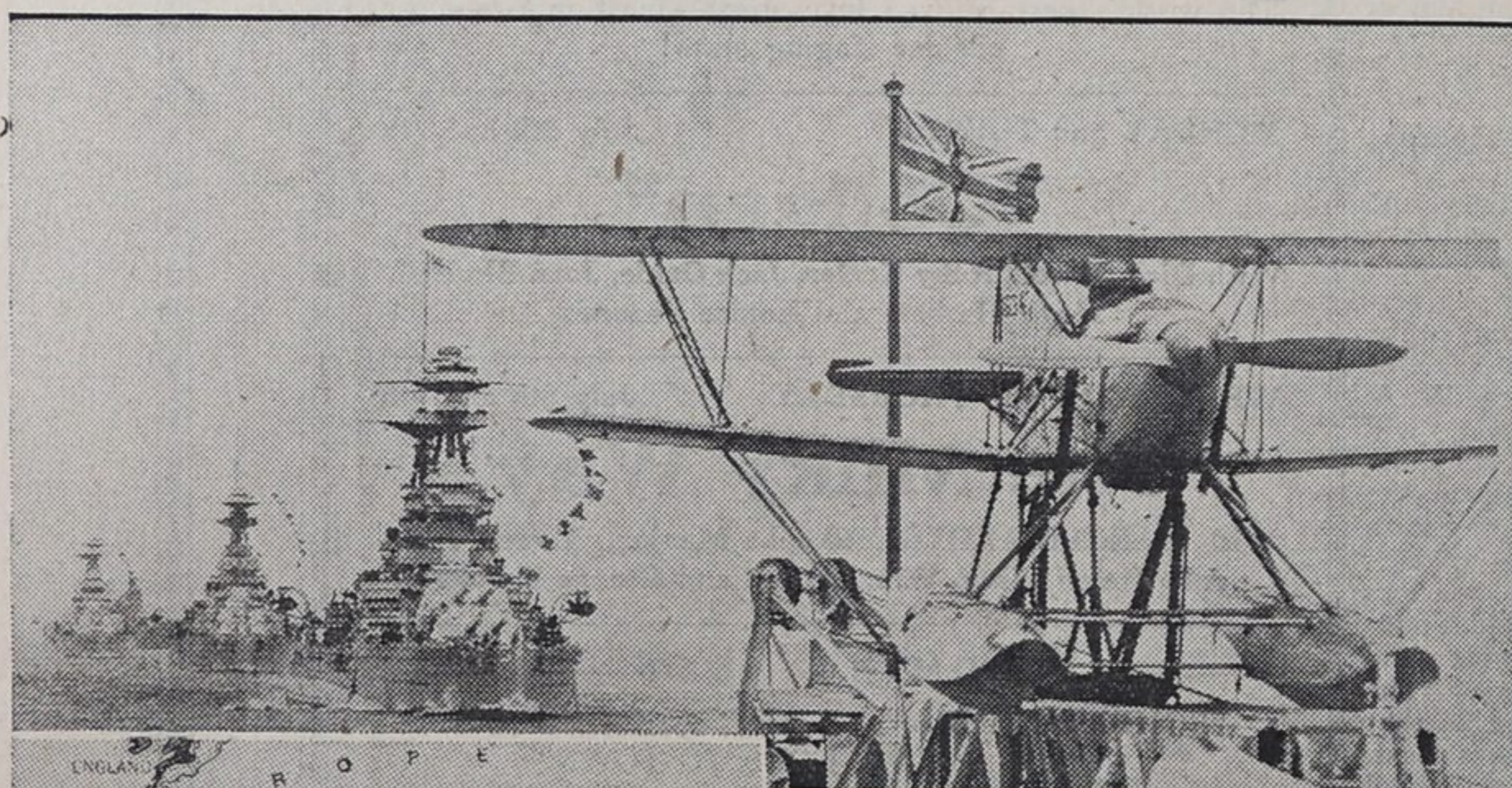


JUST AS YOU WERE GLOATING OVER YOUR SUCCESS IN QUIETING THE CUCKOO CLOCK, THE PARROT GOES INTO VOCAL ACTION.



"May I use your phone? My wife told me to ask for a raise, but she forgot to say how much!" —MacLean's

BRITISH NAVAL STRATEGISTS CONSIDER LONG ROUTE TO INDIA



The far-reaching defence programme of Great Britain is of great importance to South Africa. Italy's reinforced foothold in Africa has made the Mediterranean route to India and Egypt—the "lifeline of the Empire"—untenable from a point of view of naval strategy, and in consequence England is fortifying an alternate route by way of the Cape of Good Hope. The key point of this line is Cape Town, and Britain may build there a naval station greater than at Singapore. Plans call for fortification of Robben Island; expansion of the present base at Simonstown; conversion of Saldanha Bay into a seaplane base; and expansion of Port Louis, Island of Mauritius, the only naval base on Africa's east coast.