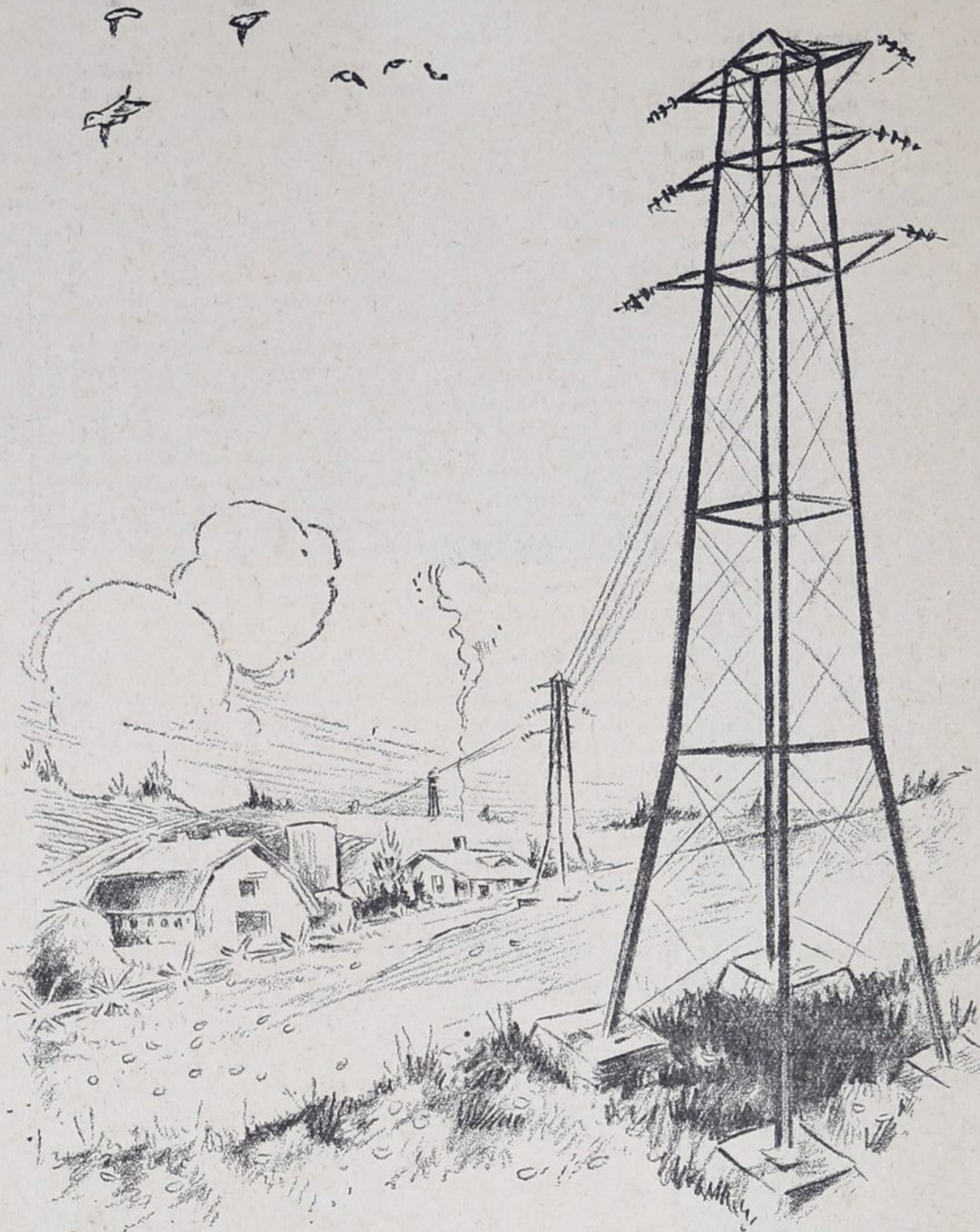


How the Power Company Lightens the Farmer's Burden



There are many pioneer townships in the area north of New Liskeard, the farmers of which would have had a different story to tell had it not been for the existence of the Canada Northern Power Corporation.

Along the roads or over right-of-ways purchased by the company run miles of transmission lines carrying power to mining regions a hundred or more miles away. The power company draws no revenue from these townships, yet some of them get from a quarter to one-half their total taxes, or the total amount of their school levy, from the power company.

Is it any wonder that, in these strenuous times, especially, many of the farmers who know what it is to work hard for every cent they receive, say, "I don't know how we could make ends meet if the power company's lines did not run through our township."

Last year the total direct taxes paid by the system totalled \$365,260.00.

The amount was equal to \$6.00 per horse power sold.

The taxes meant the paying of a thousand dollars a day, and many a municipality besides the farming townships found its burdens eased by power company taxes.



Canada Northern Power Corporation Limited

Controlling and Operating

**Northern Ontario Power Company, Limited
Northern Quebec Power Company, Limited**