

**STILTED HUMOR**



The neighbors may think it's amusing, but along about spring cleaning time, Mrs. William Alcott of Minneapolis is mighty glad her husband is a professional stilt-walking circus clown. She puts Bill to work, as pictured above, washing windows.

**SKY'S THE LIMIT**



At White Sands Proving Grounds, N.M., men are dwarfed as they work on a German V-2 rocket of the type that will be fired in test scheduled for May 10. It is expected that the radio-controlled missile will attain a maximum speed of 3200 mph.

**HIGH COMMISSIONER**



Sir Alexander Clutterbuck, K.C., M.C., has been selected to succeed Mr. Malcolm MacDonald as High Commissioner in Canada. Sir Alexander was born in 1897 and entered the Civil Service in 1919. He served as secretary to the Donoughmore commission on the Ceylon Constitution in 1927-28 and visited Ceylon in that capacity. He has visited Newfoundland and Canada on several occasions and was secretary of the Newfoundland Royal Commission in 1933. He served in South Africa as United Kingdom Deputy High Commissioner in 1939-40. He received his knighthood in the recent New Years Honours. Sir Alexander Clutterbuck was appointed as Under Secretary of State in the Dominions Office in 1942 and has been in charge of the economic and supply side of that office.

**Practical Gardening**

**Seed Planting Practices**

By W. J. DRYDEN, WNU Farm Editor.

The highest quality seed will not show a profitable growth unless it has been properly planted. Or in reverse, the best planting methods will not show good returns from inferior seeds.

If old seed is to be utilized, germination tests should be made early. When a high percentage of germination results the seeds may be used, otherwise immediate plans should be made to secure suitable stock.

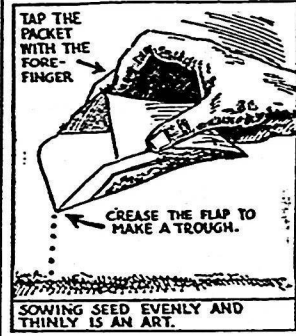
Planting methods vary with the locality and the type of soil. It may be advisable to plant in beds or ridges in order to obtain good drainage in some gardens. Level planting is recommended on the lighter sandy soils and on the majority of the sandy loam and clay loam soils. In irrigation sections the seeds are usually planted on the side of the furrows a little above the irrigation water level.

Seeds and labor may be saved by proper sowing. In many soils it will pay to mix a small quantity of fine soil to cover the seeds.

In actual sowing, take the seeds in the fingers and drop them evenly. See that the seeds are spaced evenly and thinly, even though it

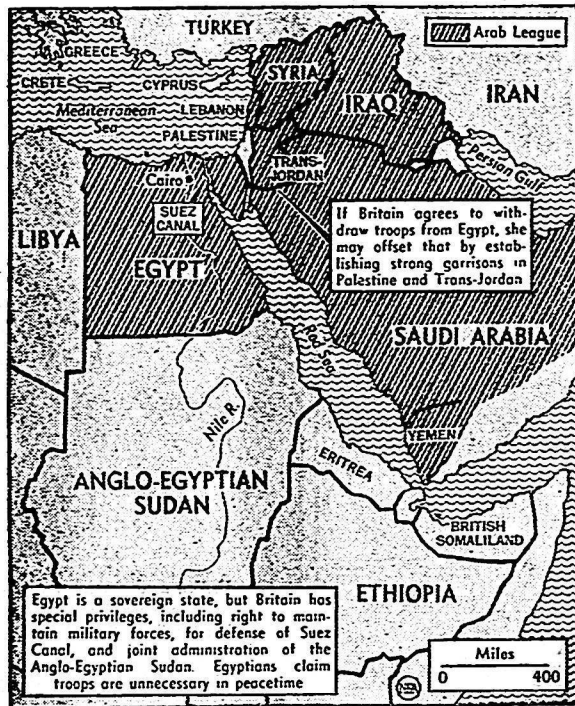
means that each seed be handled individually. The experienced gardener, who has a steady hand may find it advisable to sow directly from an envelope or seed package as shown in illustration.

When planting large seeds they may be sowed in pairs to insure



an even stand. If both seeds grow, one plant of each pair may be pulled up to prevent crowding. On the average, with fresh seeds of standard germination, it should be sufficient to sow 50 per cent more seeds than you expect to mature plants.

**BRITAIN HAS EGYPTIAN HEADACHES**



Anglo-Egyptian treaty negotiations in Cairo may produce a UN test case of Britain's ability to hold her own against Russian and Arabian pressure. Egyptians demand withdrawal of British troops, present under previous treaty. Concessions British may make could be seized upon by Russia and the Arab League as basis for further inroads on England's Middle East position. If British put heavy forces in Palestine and Trans-Jordan, Russians and Arabs may argue foreign troops are as objectionable there as in Egypt.

**Highlights of the News**

**Sugar Ration Unchanged**

Canada's sugar allocation for 1946 of 465,000 tons is an increase of 4,600 tons over the 1945 allocation.

World allocations for 1946 were announced last week by the Combined Food Board on the basis of an estimated total supply of 11,809,000 tons compared with 12,870,000 tons in 1945. The Canadian 1945 allocation was 460,400 tons for civilian requirements.

As a result of the Canadian allocation no cut in the present sugar ration is contemplated, Prices Board officials said.

**To Bring Dependents**

The 80,773-ton liner Queen Mary is expected to make several trips to Halifax, en route to New York, with dependents of Canadian servicemen starting in May.

**If Prices Are Lifted**

Collapse of the present price control system can panic United States consumers into a "stampede" of costly spending, according to Price Administrator Paul Porter. "The danger," he said, "is a real and frightening possibility."

**Monty to Visit Canada**

Field Marshal Viscount Montgomery will visit Canada next August, he told Canadian members of his staff at Bad Oeynhausen, Germany.

Viscount Montgomery is relinquishing his post as commander of the British occupation zone of Germany, and shortly will become chief of the Imperial General Staff, succeeding Lord Alan Brooke.

**U.S. Expects Record Crops**

N. E. Dodd, United States Undersecretary of Agriculture, said recently there is a "good chance" that this year's wheat and corn crops will be the largest in United States history.

**Smaller Loaf in U. K.**

The British Government has ordered a 12 1/2 per cent reduction in the use of flour for domestic bread production and a 15 per cent cut in the amount of barley to be used for beer making.

The new grain economies, listed in a statement from Prime Minister Clement R. Attlee's Downing Street residence, will give British housewives a standardized loaf of 1 1/4 pounds, instead of two pounds, without a reduction in price.

**"Good News" For Britain**

The cargo liner Salacia left Montreal last week with 15,000,000 items of good news for the people of Britain. Her cargo was eggs, 15,000,000 fresh eggs being kept in refrigerated holds.

The Salacia was bound for Glasgow.

**New Wheat Curb Planned**

The U.S. government in a "much more drastic" step to avert starvation abroad, may move in and take part of the wheat now held by mills and elevators.

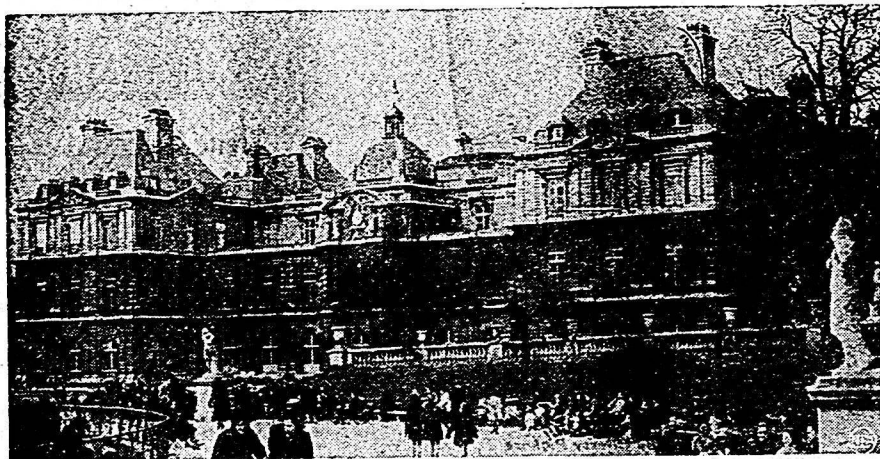
The grain obtained in this way would be used to help meet famine relief promises until greater quantities can be bought directly from farmers.

**JOHNSON FACES UP TO IT**

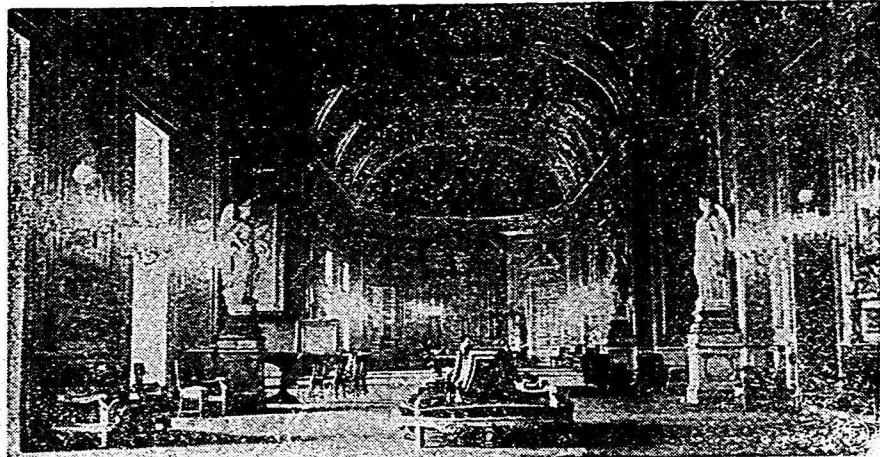


Being a Hollywood columnist isn't all cozy interviews with glamor gals, says Ersine Johnson, NEA's noted Movieland reporter, and sends along this photo to prove it. He has just taken—and is about to get another—custard pie right in the puss from Betty Hutton. In Betty's upcoming picture she plays the part of the movies' old-time serial queen, Pearl White.

**WHERE BIG FOUR WRESTLE WITH PEACE PROBLEMS**



Pictured above is the historic Palace of the Luxembourg, facing Paris' famed Luxembourg Gardens, where foreign ministers of the Big Four seek mutual agreement on peace terms that will put a formal end to World War II. Built in the early 17th Century for Maria de Medici, queen consort of Henry IV, it housed the French senate until the German occupation, served the Germans as Paris headquarters and was used by the Consultative Assembly of the French provisional government after the liberation. Photo below is view of the magnificent conference hall.



**JAP SCHOOLBOY?**



Prince Takahito Mikasa, above, Emperor Hirohito's youngest brother, says he wishes to enroll in an American university "as soon as it is permitted." The 30-year-old prince was a cavalry major at Japanese army headquarters at Nanking during war.

**Canada's Lumber Cut**  
Canada's lumber cut is likely to reach the record figure of 5,000,000,000 feet this year, an increase of 100,000,000 feet over the 1945 cut, according to Reconstruction Department officials.

**SUCCESS FOR A PARTY**  
is assured by serving Maxwell House. This supremely fine coffee delights guests because its blend contains all the stimulating goodness of choice Latin-American coffees.

**HARNES & COLLARS**

Farmers Attention - Consult your nearest Harness Shop about Staco Harness Supplies. We sell our goods only through your local Staco Leather Goods dealer. The goods are right, and so are our prices. We manufacture in our factories - Harness, Horse Collars, Sweat Pads, Horse Blankets, and Leather Travelling Goods. Insist on Staco Brand Trade Marked Goods, and you get satisfaction. Made only by: **SAMUEL TREES CO., LTD.** WRITE FOR CATALOGUE 42 Wellington St. E., Toronto.



**ANIMAL INSECT POWDER**

A modern and highly effective insect powder containing DDT, Rotenone and other active ingredients skillfully blended in a non-irritating powder—safe to use but deadly to lice, ticks, fleas and other parasites attacking farm animals.

ORDER FROM YOUR DEALER



205 Yonge Street, Toronto 1, Ontario.

**NEW CONCRETE MIXERS**

4 cu. ft. and 6 cu. ft. power  
2 1/2 cu. ft. hand or belt

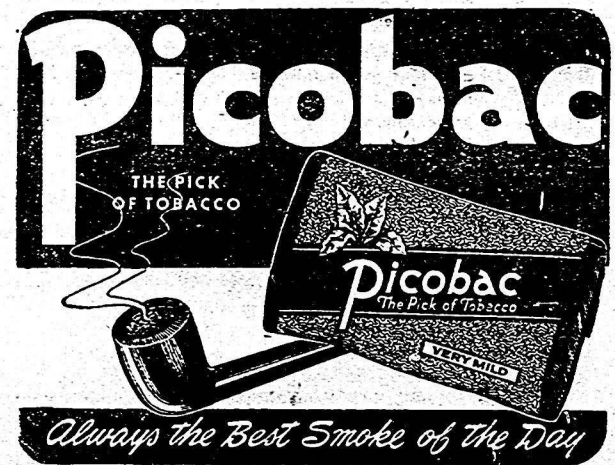
Concrete Block Machinery

Rock Crushers

Enquiries Invited

Wettlaufer-Welker Industries Ltd.

1290 Bay St. Toronto 5  
Phone Midway 8817



Always the Best Smoke of the Day