

## News and Information FOR THE BUSY FARMER

[Furnished by the Ontario Department of Agriculture]

### Early Sweet Corn

Early sweet corn brings the best price, hence the importance of planting as soon as possible. Successional sowings made at intervals of ten days in the same field are a good way to get early corn. Should the first planting succeed the second or third plantings may be hoed out, or if the first plantings be killed by frost the third or fourth planting may develop unhampered.

### Weeders

Possibly one of the most satisfactory implements for the control of weeds in a growing grain crop is what is known as the finger weeder. This implement consists of a series of long slender teeth which form a very light harrow. The finger weeder may be used to advantage on annual weeds, shortly after germination, both before and after the grain crop has emerged and until the crop is some two to four inches high.

### Current Crop Report

Spring seeding is about completed in most districts, although in some areas excessive moisture has retarded the program. This is particularly the case where the soil is low or clay in nature.

A report from Perth states that one prominent beef farmer who feeds two or more carloads of cattle, brought in Western Hereford steers at 4c a lb., averaging 740 lbs. in weight and sold them at 7c a pound, weighing over an average of 1100 lbs. This shipment of cattle which brought in \$4,000 was fed on the grain and hay grown on a 100-acre farm.

### Summary of Vegetable Prospects

Western Ontario — Variable, cool, wet weather retarded somewhat the preparation of soil and seeding, depending upon locality and drainage facilities. As a result, growth at the present time is a week to ten days later than normal, but roots are developing well and with a few warm days top growth would be rapid. Moisture conditions are excellent. There have been several slight frosts on low lands but no damage has been reported. The acreage of canning tomatoes under contract shows an increase of 40%. The acreage of asparagus, early roots, early cabbage, lettuce and early potatoes is expected to show a slight gain over last year. Commercial table stock turnip acreage will show an estimated increase of 25% over 1936 as a result of the improvement in export demand.

Eastern Ontario—Seeding generally has been considerably delayed by wet weather, although in the Ottawa district almost all of the seeding intended to be sown up to the present time has been done. In Northumberland and Prince Edward counties a considerable amount of seeding was done on light soils during four warm days at the beginning of May. On heavy soils along the lake front from Toronto east, practically no seeding of vegetables has been done. In Peel and York counties weather conditions have been favourable for seeding on sandy land but frequent rains have prevented seeding on heavy and black soils. Correspondents state there will be a large increase in the acreage devoted to canning crops such as tomatoes, peas, and corn, as there are a number of new canning factories opening in Eastern Ontario this year.

### Care of Late Chicks

It is very necessary that late chicks be raised on clean ground. Disease is more likely to hit the late ones, because of the fact that they get out on the ground younger and range farther than do the early broods.

To keep them free from trouble with coccidiosis and worms, see that the chicks are kept free from the contamination of the earlier broods and also from the laying flocks. Keep the birds in clean quarters and on clean ground, and you are giving your chicks a chance to make a normal, steady growth throughout the summer.

Late chicks must be fed well; they cannot rough it during the summer if they are to make sufficient growth to bring them into lay in time to get fall or winter eggs. It takes a well balanced diet to produce proper framework and growth.

Egg size is affected by inheritance, but it is also affected by the feeding programme. Size of egg is directly influenced by the growth the pullets make. Maximum growth must be obtained before the short days arrive. Place extra mash hoppers in the shade on the range and give the birds plenty of fresh clean drinking water.

If the chick range is covered with a crop of alfalfa, it would help materially in rounding out these growing chicks and in turning them into profitable layers. It would provide shade as well as food and would be a factor in making these chicks more comfortable during the hot weather.

### Farm and Home Week at O. A. C., June 21-25

Again the Ontario Agricultural College is throwing open its doors for a special week of visits from the farm folks of the province. June 21-25, inclusive, are the days, and the number of visitors should be larger than ever, since the work of the College and the Experimental farm grows in extent and in value from year to year.

Perhaps special interest will centre around the daily live stock parade. Never before has the College had such a fine array of breeding stock, and many farmers will be anxious to see the excellent offspring of such notable College sires as the Clydesdale stallion, "Carnegie Realization" and the Shorthorn bull, "Millhills Ransom."

The ninety acres of field crop

experiment plots will include some interesting new things, and the magnificent grounds and gardens will be at their best, with hundreds of varieties of roses and other flowering shrubs and trees to be inspected and enjoyed.

Besides these there will be many educational exhibits showing the work of various departments. Visitors will have an opportunity to ask questions of the men in charge of these exhibits and to learn what is being done about mineral deficiency; about troublesome pests such as insects and nematodes; about pullorum disease in poultry and the most efficient methods of feeding chicks; about off flavours in butter and the manufacture of blue cheese; and about many other important problems which the College is working on at the present time.

Altogether it will be a great week for the farmers of Ontario and for the College.

Last year more than 16,000 people visited the College during Farm and Home Week, and more than 16,000 others at other times during the summer. Already quite a number of groups have been at the College this year and a large number of others are booked for dates other than Farm and Home Week. Thus does the College extend its services to the people of Ontario, and thus do the people take advantage of that service. It is too good an opportunity to be missed.

### CONTROL THE TENT CATERPILLAR

Now is the time to control tent caterpillars. The whitish webs constructed by the insects are only too commonly seen on neglected fruit trees, and on roadside trees, especially wild cherries. The caterpillars may be readily killed by spraying infested trees with lead arsenate 2 lbs. in 40 gallons, or by destroying the tents by hand when the caterpillars are inside them, which is usually on cloudy days and early in the morning. Burning the nests with a torch is effective, but it may injure the trees.

## PERSONAL SERVICE

Some people are of the opinion that a bank is impersonal in its attitude toward clients generally, and particularly in regard to loans. Far from it. The officers and branch managers of this Bank are here to give their personal attention to customers and others who care to discuss their problems with us.

## THE BANK OF TORONTO

Incorporated 1855

57937

### FLESHERTON CASES IN LOCAL POLICE COURT

Laurie Thompson of Artemesia was fined \$10 and costs or 10 days in jail, on Friday of last week by Magistrate Spereman of Owen Sound, on a charge of assault against George Loucks of Artemesia, to which he pleaded not guilty. The evidence against him was so convincing that the result of the tussle was quite evident before the case was finished.

Another charge of damage to property was laid against Thompson by Loucks but, upon hearing, was dismissed by Magistrate Spereman without any fine being administered.

The Magistrate, on finding that this was the second time these two had been in court with similar charges against Thompson, imposed upon

them a declaration, which both had to sign, that no more trouble should be caused within the next two years under a penalty of \$100 fine or 100 days in jail.

Mr. Charles Stafford of Artemesia came before Magistrate Spereman on Friday of last week and pleaded not guilty on a charge laid by constable Cooke of Flesherton, of cruelty to animals and, upon being found guilty, was fined \$10 and costs or 10 days in jail. The horse, upon which the charge was laid, had been found in a pasture field in a prone position and in such a starved condition that it was unable to get on its feet. Orders were given for the horse to be destroyed and the other horses on the property, also found in a very poor state of health and strength, must be in a better condition in very short order.

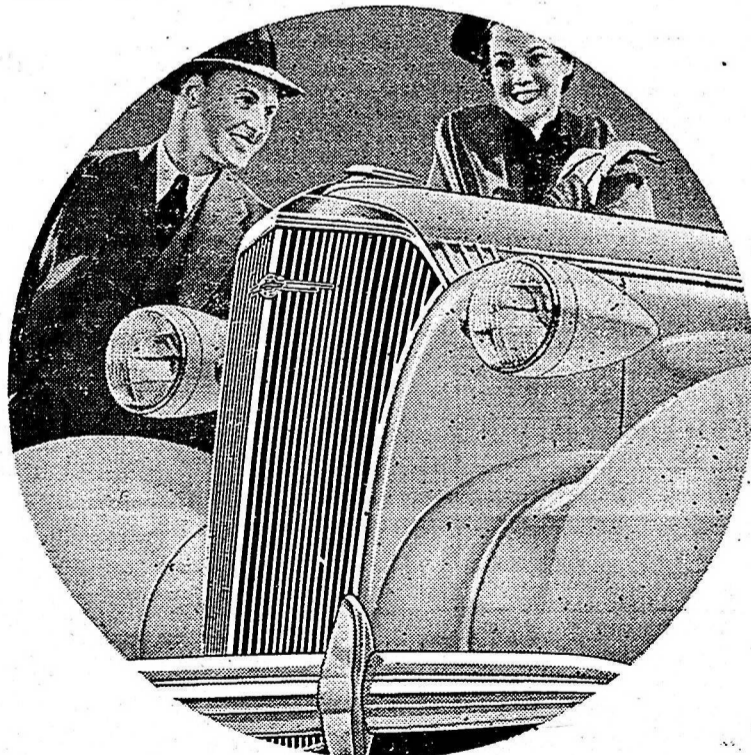
# ALL THE FINEST FEATURES ... WITH PEAK ECONOMY!

SINCE you bought your present car, Chevrolet has stepped 'way out ahead — in everything but the money it costs to buy and run!

Today's Chevrolet brings you: A longer, 112 1/4-inch wheelbase... Big, attractive Unisteel Turret Top Bodies by Fisher, the safest known... More powerful Valve-in-Head engine... Unequaled comfort, due to the exclusive "Knee-Action" gliding ride... Matchless safety, thanks to new Hydraulic Brakes, all-steel construction, and Safety glass throughout... Improved Fisher No-Draft Ventilation. And for all its big-car size and "stepped-up" performance, Chevrolet costs you less than ever before to operate! ... Less for gas, less for oil, less for upkeep!

So you see why it's Canada's fastest-selling automobile. It's the only car that brings you all the finest features at the lowest prices, and without sacrificing peak economy!

\*On Master De Luxe Models.



# CHEVROLET

PRICED FROM \$745

Master 2-Passenger Business Coupe delivered at factory, Oshawa. Government taxes, license and freight additional. (Price subject to change without notice). Low monthly payments on the General Motors Installment Plan.

... for economical transportation

C-1878

MARKDALE GARAGE CO., PHONE 20, MARKDALE