

### TENDERS WANTED

TENDERS will be received up to March 12th, 1931, for the purchase of the Sash and Door Factory, known as Barrhead Mills, together with 50 acres of land. Also the Saw Mill in the Village of Markdale together with about four acres of land for mill yard purposes, belonging to the estate of the late Orr Minnis. For further particulars apply to P. McCullough, Markdale, Solicitor for the Executor.

### BUSINESS DIRECTORY

#### LEGAL

THOS. DELANEY, Barrister, Solicitor, etc. Office—Mark Street, Markdale. Money to lend.

P. McCULLOUGH, Barrister, Solicitor, etc. Office—Mark Street, Markdale. Money to lend.

LUCAS, HENRY & LUCAS, Barristers, Solicitors, etc. Offices, Markdale, Dundalk, Durham; Federal Building, Toronto. I. B. Lucas, K.C. W. J. Lucas, Jr.

#### DENTISTRY

L. C. CAMPBELL, L.D.S., D.D.S., Dental Surgeon. Graduate of Ontario College of Dentistry and University of Toronto. Office over the Post Office. Office hours 9 a.m. to 5 p.m. Appointments made by phone.

DR. J. A. McARTHUR, Dentist, Office in the Artley Block, over Perkins, hardware store. Entrance at south-west corner of building, Toronto Street.

#### AUCTIONEER

B. H. WALDEN, Licensed Auctioneer for the County of Grey. All sales promptly attended to. Farm sales a specialty. Arrangements for sale dates may be made at the Standard Office or with B. H. Walden, Markdale.

#### FRATERNAL

L. O. L.—Markdale L.O.L. No. 1045 meets in the Orange Hall, Markdale at 8 o'clock p.m. the first Thursday in each month. Visiting brethren cordially invited. A. E. Colgan, W.M.; Elgin McFadden, Rec.-Sec.

A. F. & A. M.—Hiram Lodge No. 490, G. R. C., Markdale, meets in the Masonic Hall, Return Block at 8 o'clock p.m. the second Thursday in each month. T. Stewart Cooper, W.M.; A. E. Colgan, Sec.-Treas.

R. B. K.—Victoria Preceptory No. 282 meets in the Orange Hall, Markdale, at 8 o'clock p.m., the third Thursday in each month. Visiting brethren always cordially welcomed. A. E. Colgan, W.P.; J. E. England, Registrar.

### EVERYTHING IN LUMBER, LATH, SHINGLES AND MILLWORK

WINDOWS — DOORS — TRIM  
STAIRWORK — PANELWORK  
CUPBOARDS — WARDROBES  
Combination  
STORM AND SCREEN DOORS  
HARDWOOD FLOORING  
OAK, BIRCH, MAPLE

Please send itemized bills for quotation. Service prompt and no order too small for our most careful attention.

### JOHN HARRISON & SONS Co., Limited OWEN SOUND

#### ANDREW GRIFFITH Insurance Broker

Fire, Automobile, Public Liability, Wind and Life. Best companies represented.

Call or Phone The Standard office, Markdale.

#### HASLAM & DUNCAN AUCTIONEERS

We are prepared to conduct sales anywhere in Grey County at reasonable rates consistent with good service. If you intend holding a sale consult us before setting the date. Satisfaction guaranteed.

G. H. HASLAM, Markdale  
G. E. DUNCAN, Dundalk

### SHELburne MONUMENTAL WORKS

Scottish, American & Foreign Gravestones  
Cemetery Lettering Given Special Attention.  
Shop equipped with latest pneumatic tools.

Write or call and get prices.  
J. W. FLECK  
SHELburne

#### JAMES E. MATSON

Insurance Agent—Fire and Casualty  
Several companies represented.  
No policy fee.

Losses promptly adjusted.

Office Hills' Block, Markdale

### News and Information for the Busy Farmer

Furnished by the Ontario Department of Agriculture

#### Free Nitro Culture

The department of bacteriology at Ottawa is again supplying free nitro culture for various legumes. One bottle is given free to each farmer. Cultures are supplied for alfalfa, sweet clover, red clover, alsike clover, peas and beans. One bottle is sufficient for one bushel. Where a farmer is sowing these legume crops, it is very advisable that he use these nitro cultures, especially if the field has not had this crop on it before. The seed is treated very easily and in a very short time. Extra culture can be secured from the O.A.C. at Guelph through your local agricultural office for 50c per bottle.

If you have never used it before send for a bottle this year.

#### The Ontario Department of Forestry

is again distributing free trees to farmers of the province as follows:  
First—up to 3500 white pine, red pine, jack pine, scotch pine, larch, white spruce, white cedar, carolina poplar, white willow, walnut, butternut, elm, white ash, soft maple, hard maple or red oak, may be obtained free of charge for reforestation either in a present bush or for a new plantation on waste or poor land.  
Second—up to 500 white spruce, Norway spruce or white cedar for windbreak planting.

The only expense to the farmer is the express on the trees. This is not a large sum as the trees are small. Application forms, directions for planting, etc. can be obtained by writing to your local Department of Agriculture.

#### Weekly Crop Report

Some districts in Ontario have received benefits from the recent thaws as far as the water supply goes but this does not apply to Eastern Ontario where heavy snowfall has occurred.

Dufferin reports a recent horse show with only fair prices obtaining, \$150 being the top for a good draft. The former situation in Essex is reversed with many inquiries coming in for farms to rent, while formerly many were idle. Some farmers plan to plant between 50 to 100 acres in corn this year. A keen demand for feed-cleaning service is noted in Hastings county. In Leeds a heavy increase in alfalfa acreage for this year is forecasted. Rumors that canneries in Lennox and Addington would not operate this year were stopped by the factories sending out contracts to their patrons last week. As a result farmers are enquiring for additional help. Over 100 new cows were entered this month in the cow testing work in Peel County making a total of nearly 900. Six carloads of seed oats were shipped last week from Renfrew county.

The alarming increase in the number of fires in Western Ontario during the threshing season of 1930 caused considerable discussion at a recent conference of threshermen. The consensus of opinion was that if smoking about the threshing machines and barns were stopped, there would not be need of much legislation regarding the matter. It was recommended that a chain or wire from the separator to the ground to carry off the static electricity would be a measure of protection.

#### Will Aid Grape Growers

Following a conference of the Legislative Agricultural Committee with Niagara and Essex grape-growers, announcement has been made by Hon. Thomas L. Kennedy that as an aid to the grape-growing industry, his Department will take immediate steps to "go after and get" satisfactory markets for Ontario grapes in Eastern and Western Canada. It is the plan to have representatives located at strategic points, who would maintain close contact with the grape growers here in matters of prices, sales, shipments, etc. The growers felt that they could sell four times more grapes in Ontario than at present, by means of newspaper and radio advertising and general co-operation by the department.

#### Mineral For Swine

Mineral mixtures for swine recommended by the Committee on Rations or Ontario are as follows: (A) 4 lbs. charcoal, 10 lbs. salt, 10 lbs. bone-meal, 2 lbs. sulphur, 1 lb. iron sulphate. (B) 2 lbs. charcoal, 2 lbs. hardwood ashes, 10 lbs. salt, 5 lbs. finely-ground limestone or air-slaked lime, 5 lbs. bone-meal, 2 lbs. sulphur, 1 lb. iron sulphate. To prevent hairless pigs; dissolve 1 oz. of potassium iodide in 1 gallon of water and feed at the rate of 1 tablespoonful every day during period of pregnancy. (C) 50 lbs. bone flour, 30 lbs. slaked lime or pulverized limestone, 10 lbs. salt, 5 lbs. sulphate of iron, 3 ozs. potassium of iodide. Feed at the rate of 2 lbs. to every 100 lbs. of meal.

#### Cleanliness is Important

Cleanliness is the best safeguard we can give the newly born calf. Until recently the calves have been arriving on the pasture where nature

makes things clean. Troubles are seldom encountered under these conditions. But now the calves will be arriving in the stable. A clean box-stall is the preferable place. It is a good precaution to disinfect the stall immediately as much trouble enters by this source. Given a good start the calf should do well on good feed—if the feed pails are kept clean. Dirty feed pails are the abomination of more digestive disorders than all other causes combined. Where the farmer will take the trouble to not only wash but scald the calf pails once daily he will miss a lot of tribulation in calf rearing.

#### Collective Fertilizer Buying

In connection with the recommendation of collective purchase of fertilizers as contained in the Somerset report, steps have already been taken by this Department towards this end. Mr. George Patterson who has had considerable experience with one of the fertilizer companies, has been appointed to go into this work. A. C. Carroll of the Crops and Markets Branch, at least 25 per cent can be saved by farmers in the purchase of fertilizer where they can get together, buy by the carload and pay cash. Mr. Patterson's duties will consist in arranging with growers for this service.

#### How They Do It

The following observations were made regarding the prize-winners in a recent milk-per-acre competition conducted by Western Ontario dairymen:

They all market the milk at the factory the year around; all raise and feed a large number of hogs to utilize the waste; all have fine flocks of poultry; all four farms are heavily stocked, but the land produces all the hay, straw and silage used; all four dairymen grain the cows the year around and plan on silage for summer feeding as well as winter; all have water before the cows; all top dress their meadows; all use alfalfa, red clover, alsike and timothy when seeding down; three out of four have pure-bred herds; two out of four use milking machines; and the results bear testimony to the fact that all are good farmers.

#### Heavy Losses Recorded

In his campaign to find some way in which losses to sheep breeders through the activities of dogs might be curtailed, the Honourable T. L. Kennedy, Minister of Agriculture, has unearthed some interesting facts regarding the money paid to farmers by municipalities last year as a direct result of sheep-killing. With the report 75 per cent complete, it was shown that Ontario municipalities have paid \$110,000 to farmers who have lost sheep. Simcoe county led with an expenditure of \$6,992 and Kent was second with \$4,435. Other counties heard from are as follows:

Bruce, \$3,408; Dufferin \$4,067; Durham \$2,141; Elgin \$1,745; Essex \$4,253; Glengarry \$2,169; Norfolk \$1,838; Northumberland \$1,945; Renfrew \$2,018; Stormont \$2,725; Welland \$2,292; Grey \$3,127; Hastings \$2,258; Lambton \$2,598; Leeds \$2,079; Wellington \$3,315; York \$4,259; Middlesex \$4,311.

Of the northern municipalities, neither Kenora nor Thunder bay had anything to pay last year. Cochrane paid \$26.65 and Manitowish, once a great sheep-raising centre until the wolves got the better of the industry, expended \$95.85.

#### EUPHRASIA COUNCIL

The council met at the township hall, Rocklyn on Friday, Feb. 13th. All members were present with the Reeve in the chair.

Minutes of last meeting were read and confirmed.

Parker - Gilchrist—That the Reeve and J. A. Cook represent this council on the Kimberley community hall board.—Carried.

Cook - Parker—That the treasurer receive from Wm. Hampton the sum of \$12.70 per adjustment of work on town line Holand and Euphrasia.—Carried.

Cook - Halbert—That the treasurer receive from the treasurer of the county the sum of \$99.70, expenses of conveying Everett Peitch to Hamilton hospital.—Carried.

Gilchrist - Halbert—That a grant of \$10 be given to Kimberley Public Library.—Carried.

Cook - Parker—That this council petition the Department of Highways for the statutory grant to township roads.—Carried.

Parker - Cook—That this council pursuant to the Assessment Act pass a by-law assuming the 1930 assessment for 1931 and that the assessment be made in October for 1932.—Carried.

Gilchrist - Halbert—That D. L. Bins be appointed assessor for this township at a salary of \$110.00; he to do all work in taking the assessment also to deliver the dog tags.—Carried.

By-law No. 4 appointing assessor was passed and filed.

The following accounts were ordered to be paid: Wm. Wright, salary as auditor \$20.00; Lorne Curry, salary as auditor \$20.00; Municipal World, stationary \$47.08; stamps

and stencil for dog tags \$12.52; Municipal World, subscriptions \$6.00; C. H. Boon, Euphrasia's share for Division Court purposes \$12.00; G. Galberry, Euphrasia's share for Division Court \$15.00; Sydenham Insurance Co., extra assessment on township hall insurance \$6.00; J. T. Lawson, valuing sheep \$1.50; W. R. Perry, valuing sheep \$5.00; Jas. Patterson, sheep killed by dogs \$29.00; Carmon Curry, sheep killed by dogs \$17.00; W. J. Lyons, pay for work on road No. 7 \$9.64; J. S. Skipped, bonus for wire fence, road 2A \$13.50; E. Kirkpatrick, overseeing \$24.50; W. A. Patton, work on road 5, \$4.50. The council adjourned until March 13th.

N. L. Curry, clerk.

#### Vandeleur

The crows have arrived in large numbers the past week, which no doubt, indicates that spring is not far off. However the splendid winter weather continues. The month of February was probably one of the best on record.

Mr. Chas. Boland had a successful sale of stock and implements on Wednesday afternoon of last week. The stuff was in good condition and prices were good considering the times. Messrs. Haslam and Duncan were the auctioneers.

Miss Emily Lawson of Wodehouse spent a few days with Mr. and Mrs. Will Johnston.

The people of this community were sorry to learn that Mrs. Pritchard had been rather severely injured by a fall on Sunday afternoon. Miss Hazel Wyville, Reg. N., is in attendance.

Mr. H. Blackburn, Mrs. Blackburn sr. and Miss Marion Boland went to Toronto on Monday. They are bringing the Blackburn baby, who is a month old to-day, and who has been in St. Joseph's hospital, to the home of her grandparents, Mr. and Mrs. Chas. Boland where she will make her home.

Ebenezer Ladies Aid held a delightful little social in the church on Tuesday evening of this week. There was a good attendance and an excellent program.

#### Here and There

(791)  
The Nova Scotia fish catch for December last was 12,161,009 lbs., having a landed value of \$255,111, as compared with a catch of 10,430,700 lbs. with a value of \$229,552, for the corresponding month of the previous year.

Total amount of capital invested in Canada from other countries at the end of 1930 was \$6,375,533,000, an increase of \$229,000,000 as compared with the total at the end of 1929. Of this outside investment, 61 per cent is said to be from the United States; 35 per cent, British; and 4 per cent, from other countries.

The yield of potatoes in Canada in 1930 totaled 1,023,333 bushels, from 574,500 acres, an average yield of about 142 bushels per acre. In 1929 the yield was 66,550,000 bushels from 543,727 acres, or an average yield of 122 bushels per acre. Potatoes are grown successfully in commercial quantities in every province of the Dominion.

The Canadian Pacific Railway has announced placing of orders with the Algoma Steel Company of Sault Ste Marie for 20,000 tons of 130 lbs steel rail for spring delivery, representing a value of approximately \$1,500,000. This unusually heavy rail will be laid on 150 miles of the company's main line in the Mountain Division of British Columbia.

Prescott, Ont., Canada's newest national port, is rapidly approaching completion. The \$5,500,000 terminal which the Canadian Government is building there as a turning point for the Upper Great Lakes grain boats when they come down through the Welland Canal in the spring of this year will be ready for traffic in advance.

Canoeing history was made at Quebec recently when the seven Lavoie brothers piloted their craft over the ice-dotted waters of the St. Lawrence between Quebec and Levis in the remarkable time of 9 minutes, 43 seconds, and took first place in the canoe race which was one of the features of the Quebec Winter sports season with headquarters at the Chateau Frontenac.

"Melody Mike", Canadian Pacific Railway radio feature given every Monday night, is not only attracting wide popularity in Canada; the United States also like it and the railway's radio department recently had a letter from a school teacher in Angola, New York state, asking for 55 copies of Melody Mike's Favorite Irish songs, for distribution among her pupils.

In 1930 the Dominion's gold production was valued at \$43,000,000, an increase of \$2,000,000 over 1929. The capital investment in the mining industry in Canada at the end of 1929, the last year for which complete industrial statistics are as yet available, amounted to \$850,000,000. In that year the industry gave employment to 95,000 men and paid out in salaries and wages \$125,000,000.

The establishment of a \$75,000 marine leg for handling grain at the Ocean Terminals is one part of the programme for the development of the Port of Halifax recommended to the Federal Government recently by the Halifax Harbour Commissioners. This addition, in the opinion of the chairman of the Commission, would attract more shippers and vessels to the port and would save in one year an amount equal to the cost of the equipment.

#### Kimberley

The Ladies Aid and bazaar was very successful. Much interest was shown in most departments, although more money was realized in some former years. They have over \$50 after expenses are all paid.

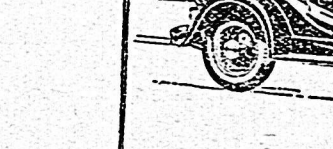
The Young People go to Flesheron this Tuesday to meet Dundalk in the first series of debates. The subject of the first debate is "Resolved that the church should supervise and give leadership in all the recreational activities of the young people." Kimberley will uphold the affirmative. Miss Jean Smith and Miss Opal Weber are the debaters and gave their points at the young people's meeting on Wednesday night.

Over 20 new books have been added to the Public Library. Among them are "The Runner" by Connor; "Dim Lantern" by Bailey; "Enchanted Barn" by Hill; "Glory of Youth" by Hill; "Dawn of the Morning" by Hill; "Silver Slippers" by Bailey; "Best Loved Poems" by Riley; "Rope" by Greason; "Adventures in Contentment" by Greason; "Adventures in Friendship" by Greason and many others from

good authors.  
Born—To Mr. and Mrs. G. Wallace, a son. Congratulations.  
The Day of Prayer was observed in the church here under the leadership of the W.M.S. The service was beautiful. We were sorry that there was not a larger attendance.  
The W. I. met at the home of Mrs. F. Weber. Over 20 members and visitors and a number of children were present. Mrs. Myles gave a very humorous paper, "Should a farmer's wife take a holiday." Mrs. S. S. Burritt gave a paper "Good books in the home." The roll call was answered by "How to keep good natured."  
Mr. and Mrs. Press and the girls have moved to the village, into Mr. Hawkins' home.  
We are glad to report Mr. W. T. Ellis able to be out again after a month of illness.

#### Berkeley

Mrs. Thos. Fitzsimmons, who has been in Owen Sound taking treatment for several months, returned home on Monday of last week somewhat improved.



### When Economy is a Prime Consideration

NATURALLY, economy is an important thing to consider in deciding what car the family should buy. And from this standpoint, the Chevrolet Six is a very practical and satisfying choice. New low prices make Chevrolet's six-cylinder smoothness

and 50-horsepower performance available to new thousands of motor car buyers. And due to its low cost for gasoline and oil, its long life and freedom from repairs—the Chevrolet Six will serve you economically for tens of thousands of miles.

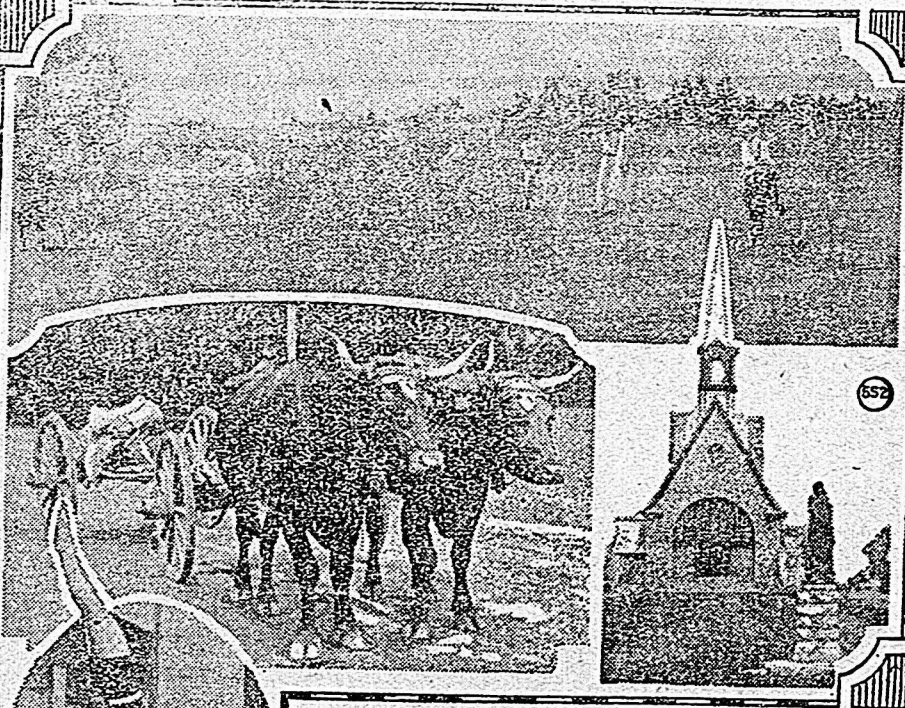
PRICED FROM \$610 at Factory, Oshawa Taxes extra

### The NEW CHEVROLET SIX

A GENERAL MOTORS VALUE

Markdale Garage Co., Markdale, Ont.

### The Lure of the Maritimes



makers from all parts of eastern Canada and United States. Their many sea-side resorts; quaint and beautiful little villages and snug towns dotted along the Bay of Fundy, have a special attraction for those who wish to combine comfort with scenic beauty; golf and a wide variety of other sports with fishing and sailing; and the whole with modern and direct transportation.

St. Andrews-by-the-sea with its well known and excellent Algonquin Hotel. There, as at its more famous namesake in Scotland, is to be found one of the outstanding 18-hole golf courses in Eastern Canada where many a hard-fought championship has been decided. Again, take Digby on the Bay of Fundy. Set in some of the most beautiful, old-world scenery

in Canada, the Pines, recently opened hotel, offers a wide range of entertainment including tennis, golf, sailing, fishing, hiking, horseback riding, motorizing, swimming either in the sea or in the salt water pool with plate glass windcreens and promenade for spectators nestling under the veranda of the hotel. Good motor-riding roads give access to scores of quaint little villages, some of them, in the Evangeline country, scenes of historic incident and tragedy. Here too, the modern autoist will often meet the old-world ox wain taking its leisurely way down the country road. Lay-out shows hand-spring dive into the Pines Hotel pool; Evangeline country showing church and statue at Grand Pre; and section of course at St. Andrews.