

# Strange Ruins on Labrador Coast

## Morrissey Expedition Examines Relics That May Mark Norse Visits Nearly 500 Years Before Columbus

The Patton expedition into the north country is creating some interest in the States. George Palmer Patton is leading the American Progress expedition with many volumes of illustrations. It is not surprising that the expedition should have been interested in the ruins of the Norsemen. The ruins are of a type which may be identified as Norse. The ruins are of a type which may be identified as Norse. The ruins are of a type which may be identified as Norse.

The ruins are of a type which may be identified as Norse. The ruins are of a type which may be identified as Norse. The ruins are of a type which may be identified as Norse. The ruins are of a type which may be identified as Norse. The ruins are of a type which may be identified as Norse.

The ruins are of a type which may be identified as Norse. The ruins are of a type which may be identified as Norse. The ruins are of a type which may be identified as Norse. The ruins are of a type which may be identified as Norse. The ruins are of a type which may be identified as Norse.

The ruins are of a type which may be identified as Norse. The ruins are of a type which may be identified as Norse. The ruins are of a type which may be identified as Norse. The ruins are of a type which may be identified as Norse. The ruins are of a type which may be identified as Norse.

The ruins are of a type which may be identified as Norse. The ruins are of a type which may be identified as Norse. The ruins are of a type which may be identified as Norse. The ruins are of a type which may be identified as Norse. The ruins are of a type which may be identified as Norse.

The ruins are of a type which may be identified as Norse. The ruins are of a type which may be identified as Norse. The ruins are of a type which may be identified as Norse. The ruins are of a type which may be identified as Norse. The ruins are of a type which may be identified as Norse.

# Sunday School Lesson

ANALYSIS.  
I. THE RETURN OF ELIJAH, 1-19.  
II. THE CONTEST AT CARMEL, 20-30.  
III. THE BURNING OF RAJAH, 31-46.

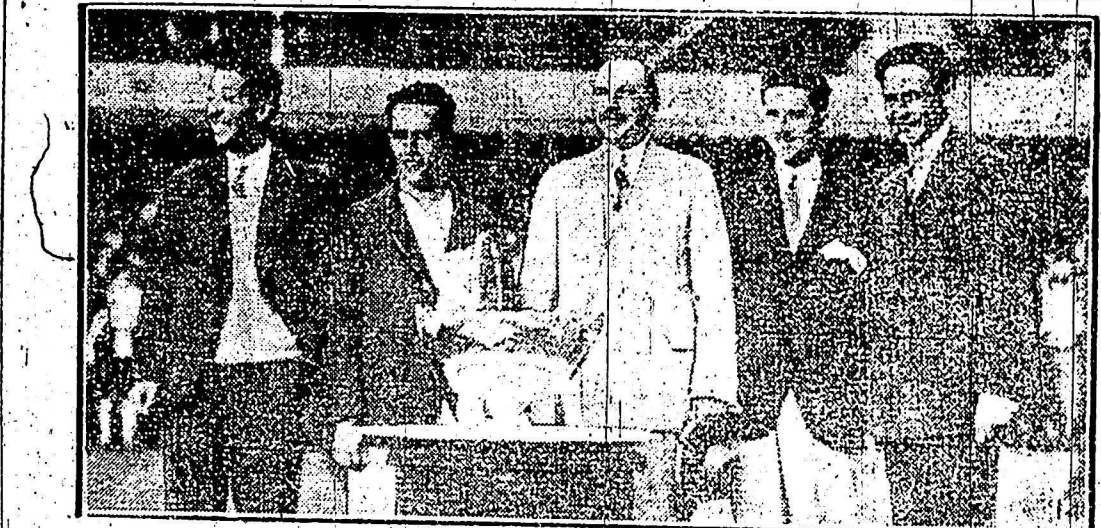
The death of Solomon, and the revolt of Jeroboam, and the establishment of the northern Kingdom of Israel, took place about B.C. 931. This kingdom included ten of the twelve tribes of Israel, and covered the whole of eastern Palestine and central and northern portions of western Palestine. It was much larger, richer and more populous than the kingdom of Judah, which the descendants of David continued to reign. But its kings had not the advantage of the warm attachment and loyalty of their people, as had the kings of Judah who inherited the great traditions of David and Solomon.

The people of the north were not in the habit of worshipping at the altars of Baal and Jeevah, as did the people of Judah. They worshipped the Lord, and it was the Lord who delivered them from the hands of the Philistines. It was the Lord who made Israel to be a great nation, and it was the Lord who made them to be a great nation.

The Lord who made Israel to be a great nation, and it was the Lord who made them to be a great nation. The Lord who made Israel to be a great nation, and it was the Lord who made them to be a great nation. The Lord who made Israel to be a great nation, and it was the Lord who made them to be a great nation.

The Lord who made Israel to be a great nation, and it was the Lord who made them to be a great nation. The Lord who made Israel to be a great nation, and it was the Lord who made them to be a great nation. The Lord who made Israel to be a great nation, and it was the Lord who made them to be a great nation.

The Lord who made Israel to be a great nation, and it was the Lord who made them to be a great nation. The Lord who made Israel to be a great nation, and it was the Lord who made them to be a great nation. The Lord who made Israel to be a great nation, and it was the Lord who made them to be a great nation.



THE FRENCH TEAM WHICH CAPTURED THE DAVIS CUP. Left to right: Rene La Coste, Henri Cochet, Jacques Brugnon and Jean Borotra. After putting up a heroic battle, the Americans finally succumbed to the brilliance of the French attack, and the famous international trophy shown above will be carried back to France.

# The Next Big Event Royal Winter Fair Will Be

Held Nov. 16 - Nov. 24  
**BIGGER AND BETTER**

All attendees at the Canadian National Exhibition next week will have for the stock breeders of the Dominion, the new exhibit across the floor space merely presents the added importance that the 1927 "Royal Winter Fair" will have for the stock breeders of the Dominion. The new exhibit across the floor space merely presents the added importance that the 1927 "Royal Winter Fair" will have for the stock breeders of the Dominion.

The new exhibit across the floor space merely presents the added importance that the 1927 "Royal Winter Fair" will have for the stock breeders of the Dominion. The new exhibit across the floor space merely presents the added importance that the 1927 "Royal Winter Fair" will have for the stock breeders of the Dominion.

The new exhibit across the floor space merely presents the added importance that the 1927 "Royal Winter Fair" will have for the stock breeders of the Dominion. The new exhibit across the floor space merely presents the added importance that the 1927 "Royal Winter Fair" will have for the stock breeders of the Dominion.

# New Ways to Prepare Chicken

In almost every household, chicken is prepared at least once a week, but generally in not but two ways, for these are established favorites with the family. Of course, the home-raised, discharging in the kitchen, and she often wonders if it would not be a good plan to try new methods to see if some of the other ways of cooking the bird, to overcome the difficulty of getting the taste. Here are a few for her to try.

Clean and disjoint a chicken and summer it in enough water to cover, until the meat is tender but not falling from the bones. Remove the bones, discarding all skin and fat, and cut it into pieces not larger than an inch across. If this preparation is made the day before, the meat is tender, strain two cups of the hot broth from the pot, cover, and let it stand until the next day. When ready to use, steam or boil.

Put the 1/2 lb. of a leaf of chard into a pot with one cup of water, and steam for five minutes. Then add the chicken pieces, and steam for five minutes more. This is a very simple and quick method of preparing chicken, and it is very healthy.

Butter can be prepared in a number of ways, and it is very important to have it prepared in the best possible way. The best way to prepare butter is to have it prepared in the best possible way.

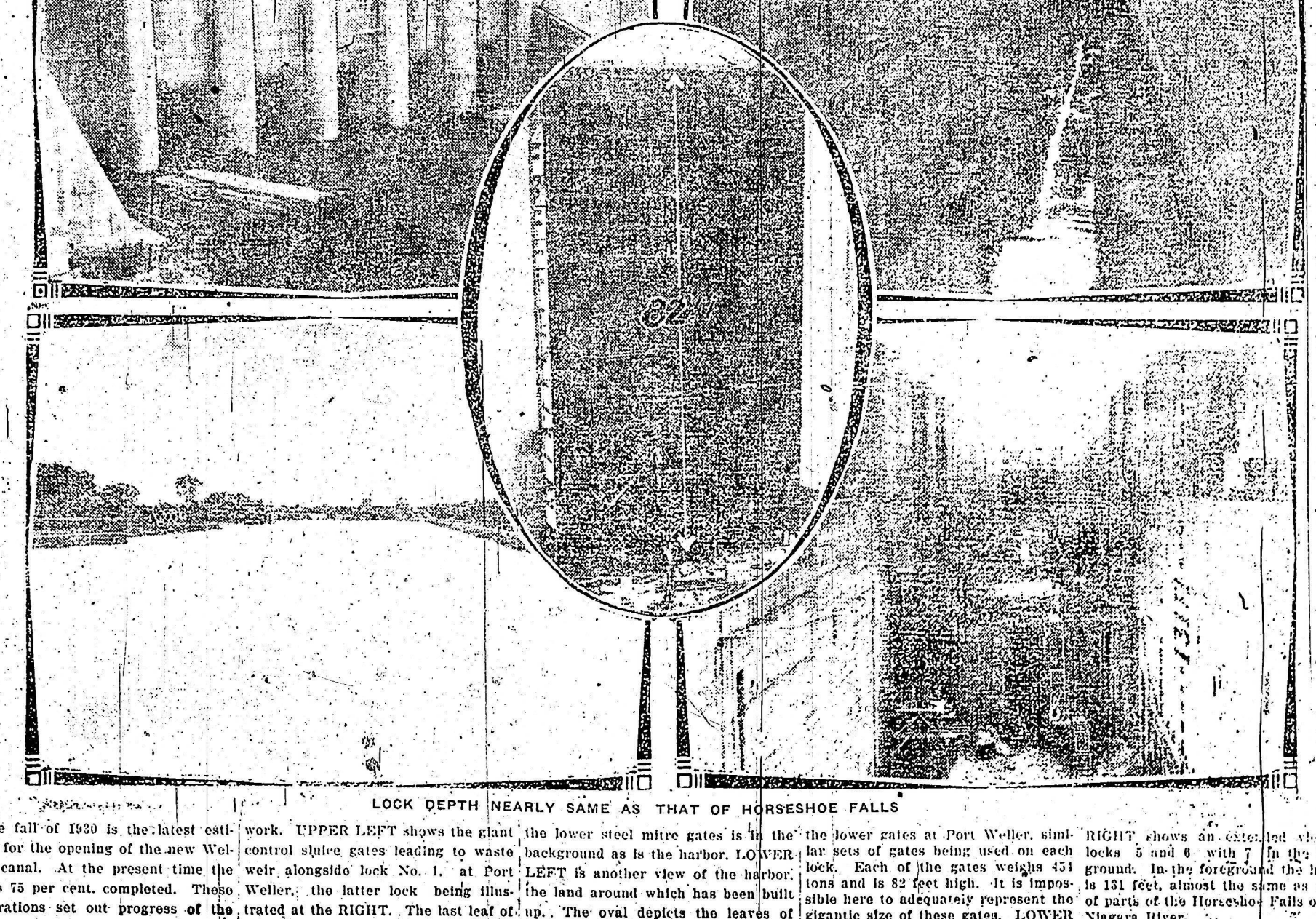


At the Games. She is always on the ground. She is always on the ground. She is always on the ground.

# A Window Arrangement

The winter window in the home is a most important part of the home. It is a window which is used for many purposes, and it is very important to have it arranged in the best possible way. The winter window in the home is a most important part of the home.

# The New Welland Nears Completion



LOCK DEPTH NEARLY SAME AS THAT OF HORSESHOE FALLS. UPPER LEFT shows the giant control sluice gates leading to waste weir, alongside lock No. 1. At Port Weller, the latter lock being flanked by the gates, the last lock of the project. RIGHT shows an elevated view of the lower gates at Port Weller, similar to those at the Horseshoe Falls. Each of the gates weighs 451 tons and is 32 feet high. It is impossible here to adequately represent the gigantic size of these gates. LOWER

The fall of 1930 is the latest estimate for the opening of the new Welland canal. At the present time the job is 75 per cent completed. These illustrations set out progress of the work. UPPER LEFT shows the giant control sluice gates leading to waste weir, alongside lock No. 1. At Port Weller, the latter lock being flanked by the gates, the last lock of the project. RIGHT shows an elevated view of the lower gates at Port Weller, similar to those at the Horseshoe Falls. Each of the gates weighs 451 tons and is 32 feet high. It is impossible here to adequately represent the gigantic size of these gates. LOWER